

Leach SC II SaniCruiser[®]

SPECIFICATIONS



Body shown with optional equipment.

Standard of Excellence

- All usable 2.4 cubic yard hopper
- Takes virtually all types of refuse
- Single lever packer plate control
- Single lever push-out control
- Clean push-out plate design
- Exclusive single stage push-out design
- Open front end for easy maintenance
- Leach built—Leach reliability
- Meets all ANSI safety standards
- Available in 16, 17, 20 and 25 cubic yard capacities
- Leach exclusive baked on enamel finish
- Built better to last longer



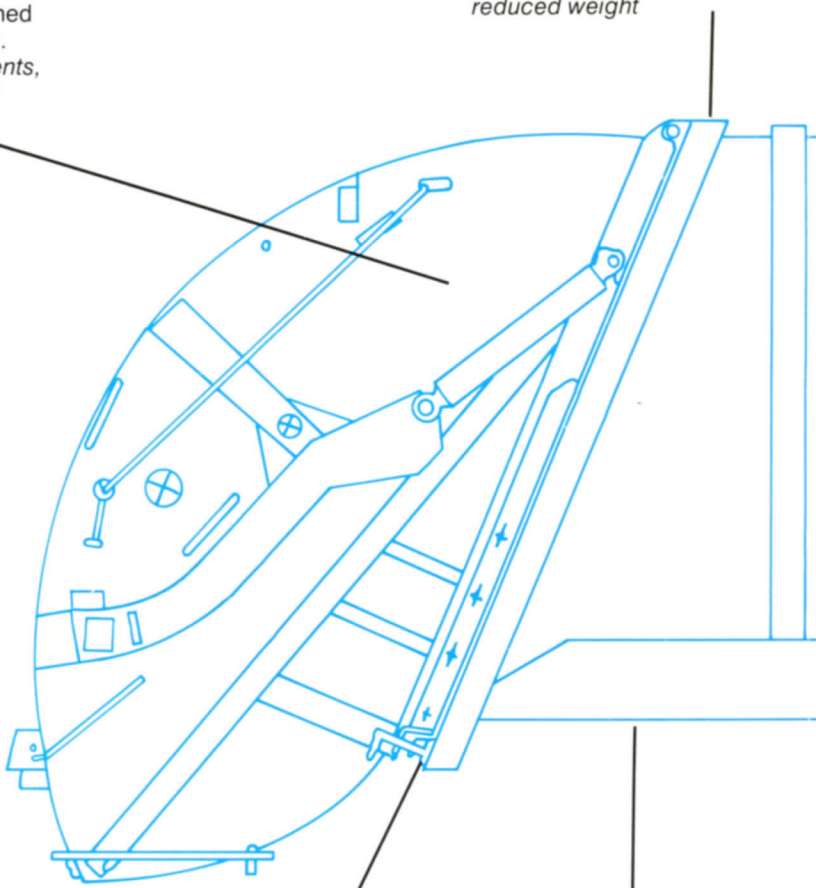
America's most efficient refuse collection systems

Leach SC 1

Top frame weldment and equalizer arms redesigned with square steel tubing.
Benefit: Better weldments, increased strength and reduced weight

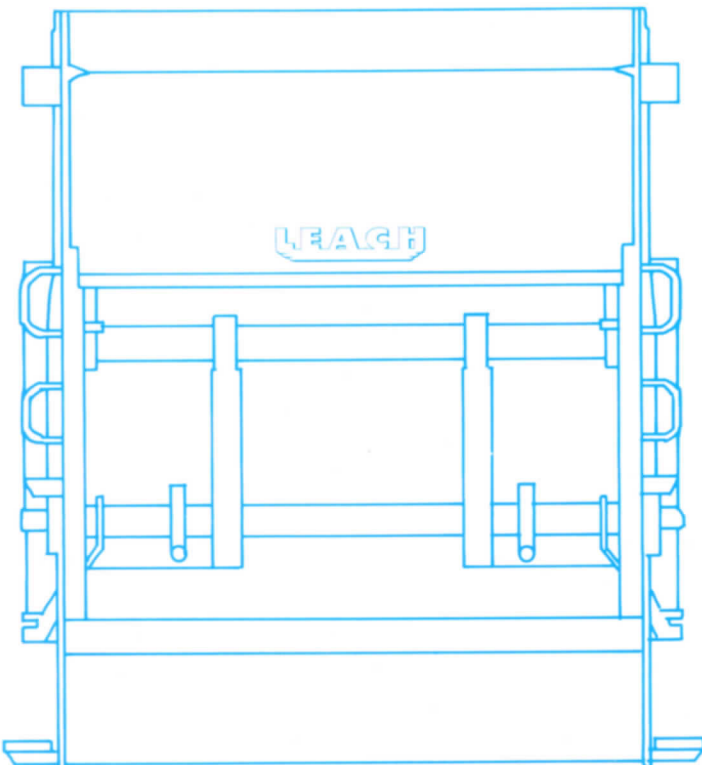
Body hinge bar is rectangular tubing—replacing flat steel bar
Benefit: Greater strength—reduced weight

New improved polyurethane seal used in all hydraulic cylinders
Benefit: Better seal—longer life



Trough is $\frac{1}{4}$ " 80,000 PSI yield strength steel—replacing $\frac{5}{16}$ " 50,000 PSI yield strength steel
Benefit: Reduced weight with equal strength

New tailgate gasket made of extruded rubber
Benefit: Better seal—longer life

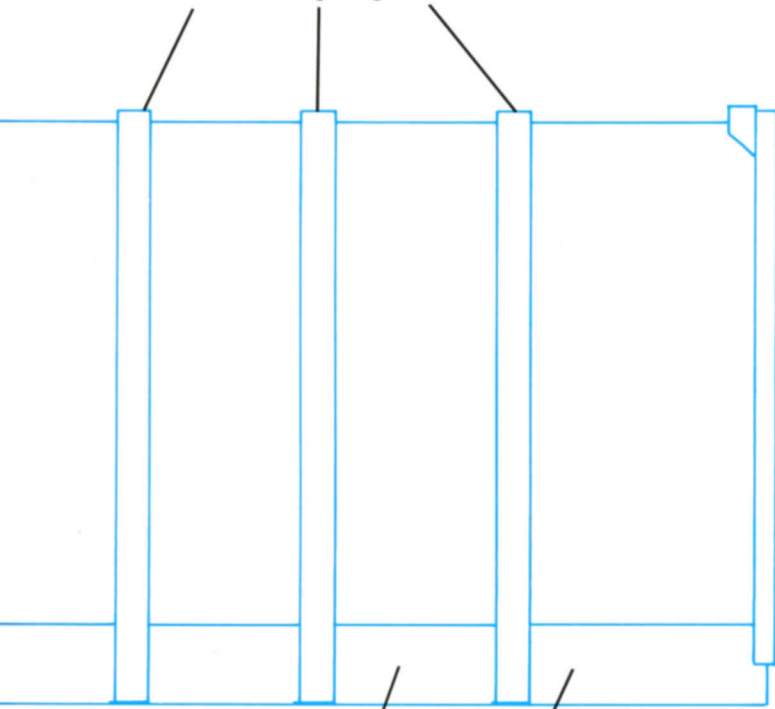


Rear View

II Features

Roof and side reinforcements wrap around the body and are spaced to match stress requirements

Benefit: Greater strength placed where needed—while reducing weight



Right Side View

Larger wear shoes on ejection panel—length of shoe has been increased from 8" to 12"

Benefit: More wear area and longer life—increased blade stability

Suction strainer for hydraulic system now mounted outside and below hydraulic tank

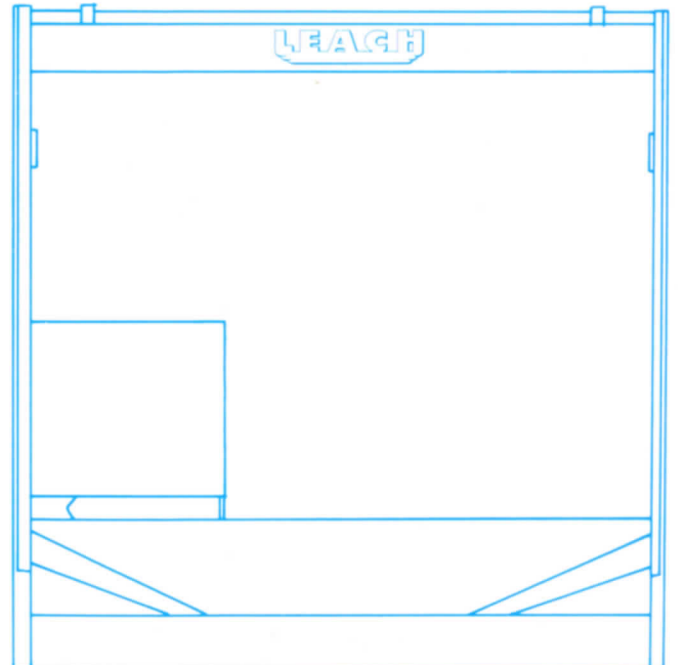
Benefit: Strainer now easily accessible for service

Lateral restraint front mounting brackets

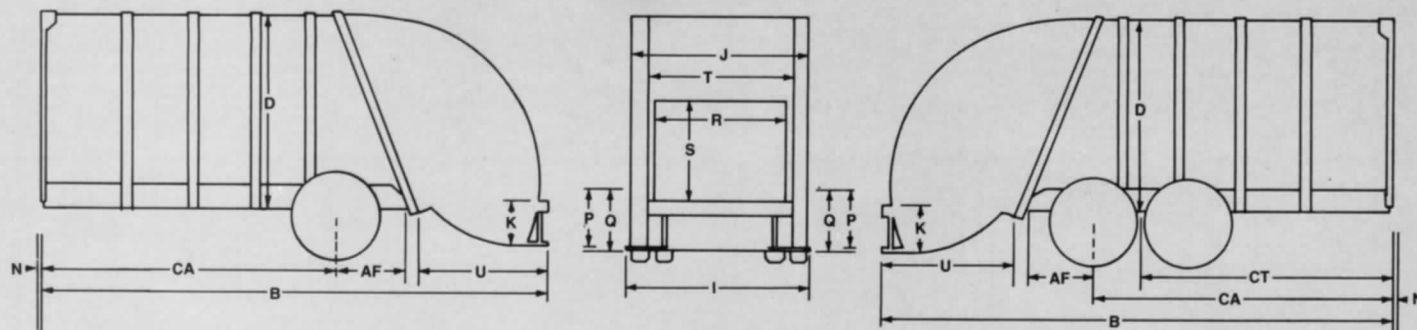
Benefit: Prevent front of body from shifting sideways

Resilient clamps used for mounting hydraulic lines

Benefit: Reduced noise—less vibration and less chance of hydraulic line fatigue



Front View



BODY DIMENSIONS	Single Axle						Tandem Axle			
	16 Yd.	18 Yd.	20 Yd.	12m ³	13m ³	15m ³	20 Yd.	25 Yd.	15m ³	19m ³
AF After Frame	35"	35"	35"	915mm	915mm	915mm	26"	20"	661mm	508mm
B Overall Length	205"	218"	233"	5207mm	5537mm	5918mm	231"	268"	5867mm	6807mm
CA To Centerline of Rear Axle	110"	123"	138"	2794mm	3125mm	3506mm	145"	188"	3683mm	4775mm
CT To Centerline of Trunion (50" Beam)							120"	163"	3048mm	4140mm
D Height Above Chassis Frame (with 2½" sill)	93"	93"	93"	2362mm	2362mm	2362mm	93"	93"	2362mm	2362mm
I Body—Outside Width	96"	96"	96"	2439mm	2439mm	2439mm	96"	96"	2439mm	2439mm
J Body Inside Width	91"	91"	91"	2312mm	2312mm	2312mm	91"	91"	2312mm	2312mm
K Hopper Depth	22"	22"	22"	559mm	559mm	559mm	22"	22"	559mm	559mm
N Interference Point Above Chassis Frame	5"	5"	5"	127mm	127mm	127mm	5"	5"	127mm	127mm
P Top of Step Below Chassis Frame	19"	19"	19"	483mm	483mm	483mm	19"	19"	483mm	483mm
Q Hopper Bottom Below Chassis Frame	23"	23"	23"	585mm	585mm	585mm	23"	23"	585mm	585mm
R Hopper Opening Width	78"	78"	78"	1982mm	1982mm	1982mm	78"	78"	1982mm	1982mm
S Hopper Opening Height	48"	48"	48"	1220mm	1220mm	1220mm	48"	48"	1220mm	1220mm
T Hopper Inside Width	84"	84"	84"	2134mm	2134mm	2134mm	84"	84"	2134mm	2134mm
U Rear of Body to Rear of Tailgate Closed	60"	60"	60"	1524mm	1524mm	1524mm	60"	60"	1524mm	1524mm
■ Height Above Chassis Frame (Tailgate Raised)	153"	153"	153"	3886mm	3886mm	3886mm	153"	153"	3886mm	3886mm
■ Loading Lip Below Chassis Frame	1"	1"	1"	26mm	26mm	26mm	1"	1"	26mm	26mm
■ Center of Gravity Measured from Front of Body										
—Body Only	98"	106"	115"	2490mm	2693mm	2921mm	115"	127"	2921mm	3226mm
—Pay Load	79"	87"	97"	2007mm	2210mm	2464mm	97"	112"	2464mm	2845mm
■ Hopper Capacity	2.4 cu yd	2.4 cu yd	2.4 cu yd	1.7m ³	1.7m ³	1.7m ³	2.4 cu yd	2.4 cu yd	1.7m ³	1.7m ³
■ Approx. Body Weight	10,773 lbs	10,985 lbs	11,365 lbs	4887kg	4983kg	5155kg	11,365 lbs	12,297 lbs	5155kg	5578kg
■ Min Truck GVWR Requirement	29,000 lbs	31,000 lbs	32,500 lbs	13155kg	14062kg	14742kg	36,000 lbs	44,000 lbs	16330kg	19959kg

NOTES: *Truck selected must be capable of carrying net weight of body plus weight of refuse to be collected.

*A full variable speed governor is preferred on truck equipped with diesel engine.

*CA Must be usable with no obstructions protruding above frame.

*Specifications subject to change without notice.

Features

- Sides, front and rear reinforced with electrically welded box sections.
- Contents of body sealed off from outside during compaction period.
- Steps and grab handles both sides of tailgate.
- Buzzer system provided both sides at rear to enable loaders to signal driver.
- Load is pushed out by simple, easily maintained, double-acting cylinder.
- Single lever packer control at rear of hopper... curbside.
- Single lever ejection control at front of body... street side.
- Single lever tailgate lift control at front of body... street side.
- Leach exclusive baked-on enamel finish. White standard. Other colors optional. (Other colors may affect visibility)
- Meets all ANSI Safety Standards.

Hydraulic System

- **Cylinders**
 - (2) 6" double-acting packer plate cylinders
 - (1) 5" single-acting holding cylinder
 - (1) 4" double-acting ejection cylinder
 - (1) 4" single-acting clamping cylinder
 - (2) 4" single-acting tailgate lift cylinders
- **Pump**
 - Leach—spur gear type
 - Capacity—42 GPM @ 1400 RPM
 - Maximum operating pressure—1650 PSI
- **Hydraulic Tank**
 - Capacity—35.5 gallons
 - Location—Right hand front on floor inside body
 - Filters—141 micron in-tank suction strainer
 - 20 micron return line filter
 - By-pass valve
 - Sight gauge—located on front of tank at eye level

Body Construction

- Sides—11 gauge Hi-Tensile
- Top—11 gauge Hi-Tensile
- Floor—11 gauge Hi-Tensile
- Floor trough—¼" Bethstar 80

Tailgate Construction

- Hopper sides—11 gauge EX-TEN 50
- Hopper bottom—¾" EX-TEN 50
- Packer plate—¼" EX-TEN 50

Optional Equipment

- Chain container attachment
- Hydraulic container attachment
- 8,000 lb. overhead winch
- 12,000 lb. overhead winch
- 12,000 lb. container lifting cylinder

LEACH

Pacesetter in Sanitation



2 North LaSalle Street
Chicago, Illinois 60602
(312) 236-0728

International Distribution:
EL Industries International
2 North LaSalle Street ■ Chicago, Illinois 60602
Cable: ELINDINT, CGO ■ Telex 25-4146