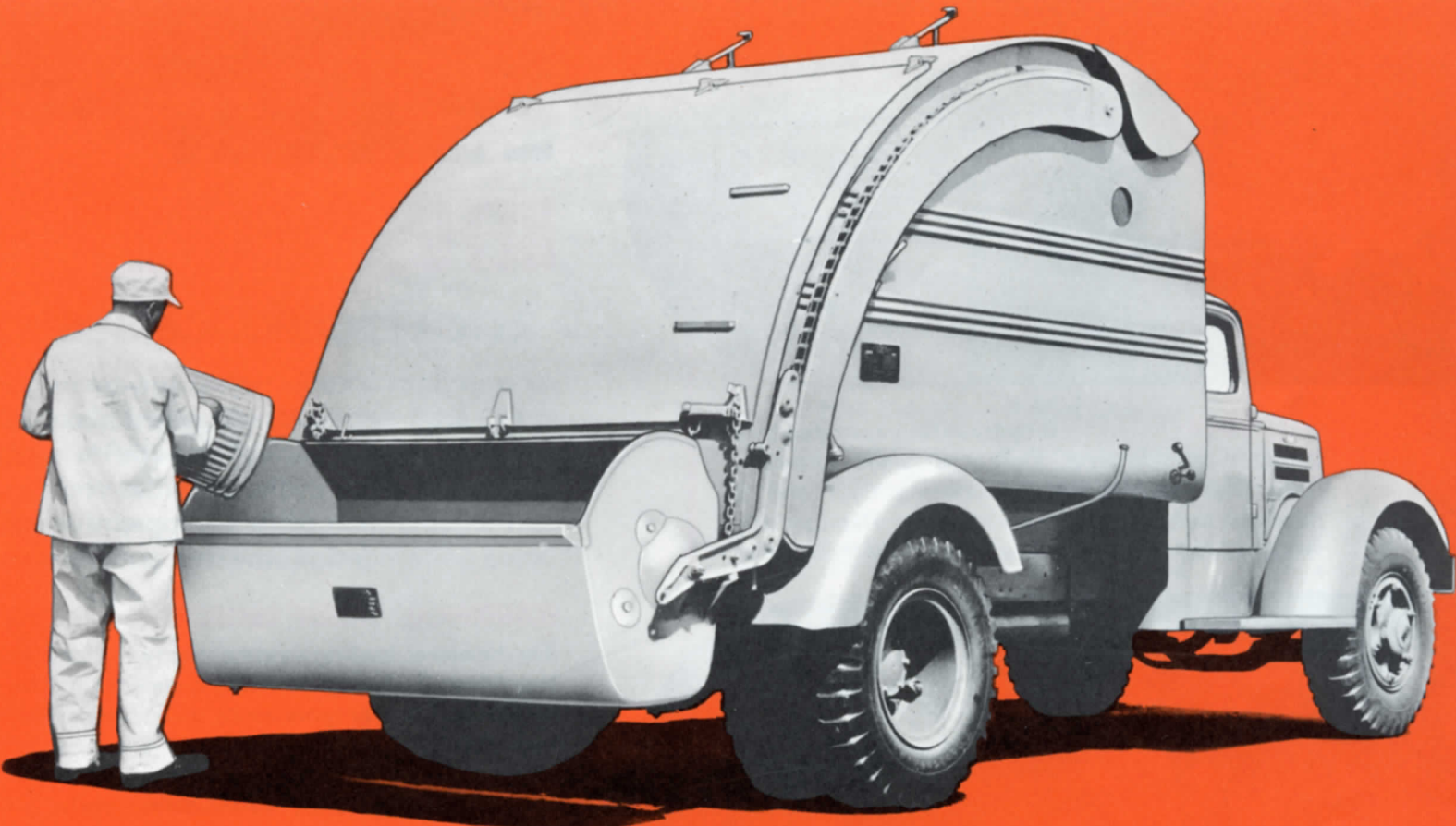


# LEACH

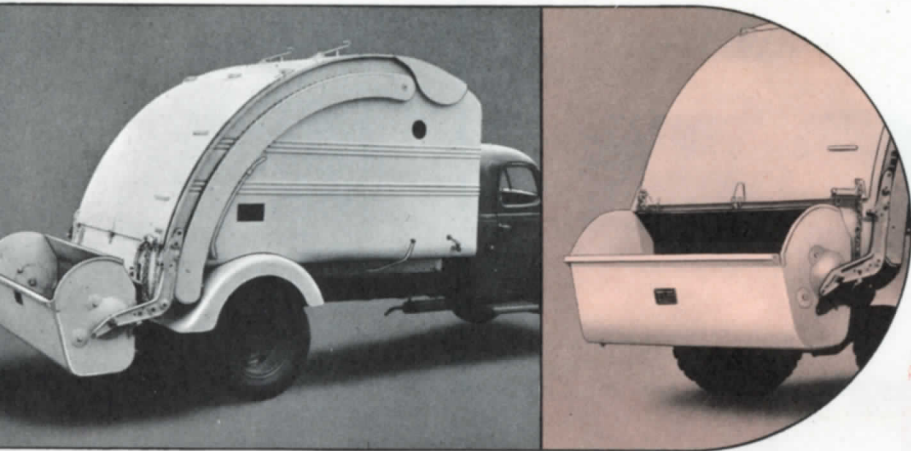
# REFUSE-GETTER



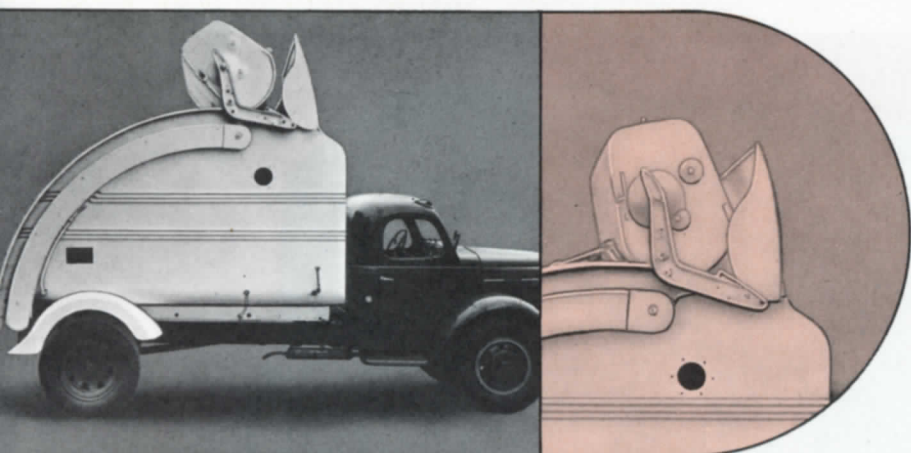
*SAFE • SANITARY • SIMPLE*

**For Safe . . . Sanitary . . . Low-Cost Collection of  
Wet Garbage, Ashes, All Non-Compactible Waste**

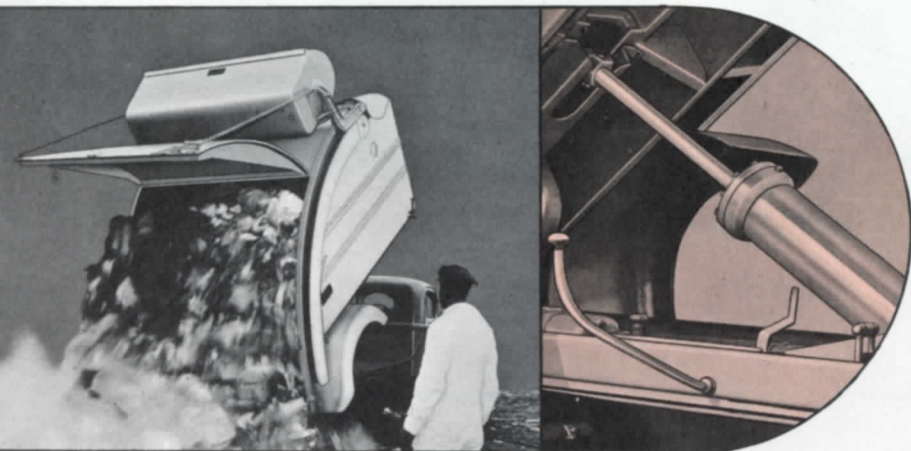
## HOW IT WORKS



**HIP-LEVEL LOADING** with large, deep loading bucket just one inch above truck frame for faster, easier, safer loading, greater efficiency. The unusual width of the  $\frac{3}{4}$  yard capacity bucket allows 2 or 3 men to load simultaneously side by side.



**FAST BUCKET CYCLE** is hydraulically operated by a handy, curb side lever. Bucket is raised automatically, dumped through top-opening door and is returned to loading position quickly. The specially designed top door prevents spillage during dumping.



**HYDRAULIC DUMPING** is fully automatic. The bucket is lifted out of the way, large 5-ft. high, full width doors are fully opened and body lifted to sharp angle in seconds. Smooth, flat interior has rounded corners assuring a complete, positive dump.



HEAVY  
FULL 8½ CU  
HIGH-GLOSS BAKED  
HANDLES ALL WET GARB  
AND NON-COMPACTIBLE  
ONE-LEVER OPERATION  
HIP-LEVEL LOADING  
SAFE TO OPERATE

# LEACH REFUSE-GETTER

cuts costs . . . s

Ideally suited for communities where compactible waste is collected, the Leach Refuse-Getter with its superior automatic dumping cycle provides the finest collection of non-compactible waste. The design, the ease and economy of

### ECONOMICAL, SPEEDY COLLECTIONS

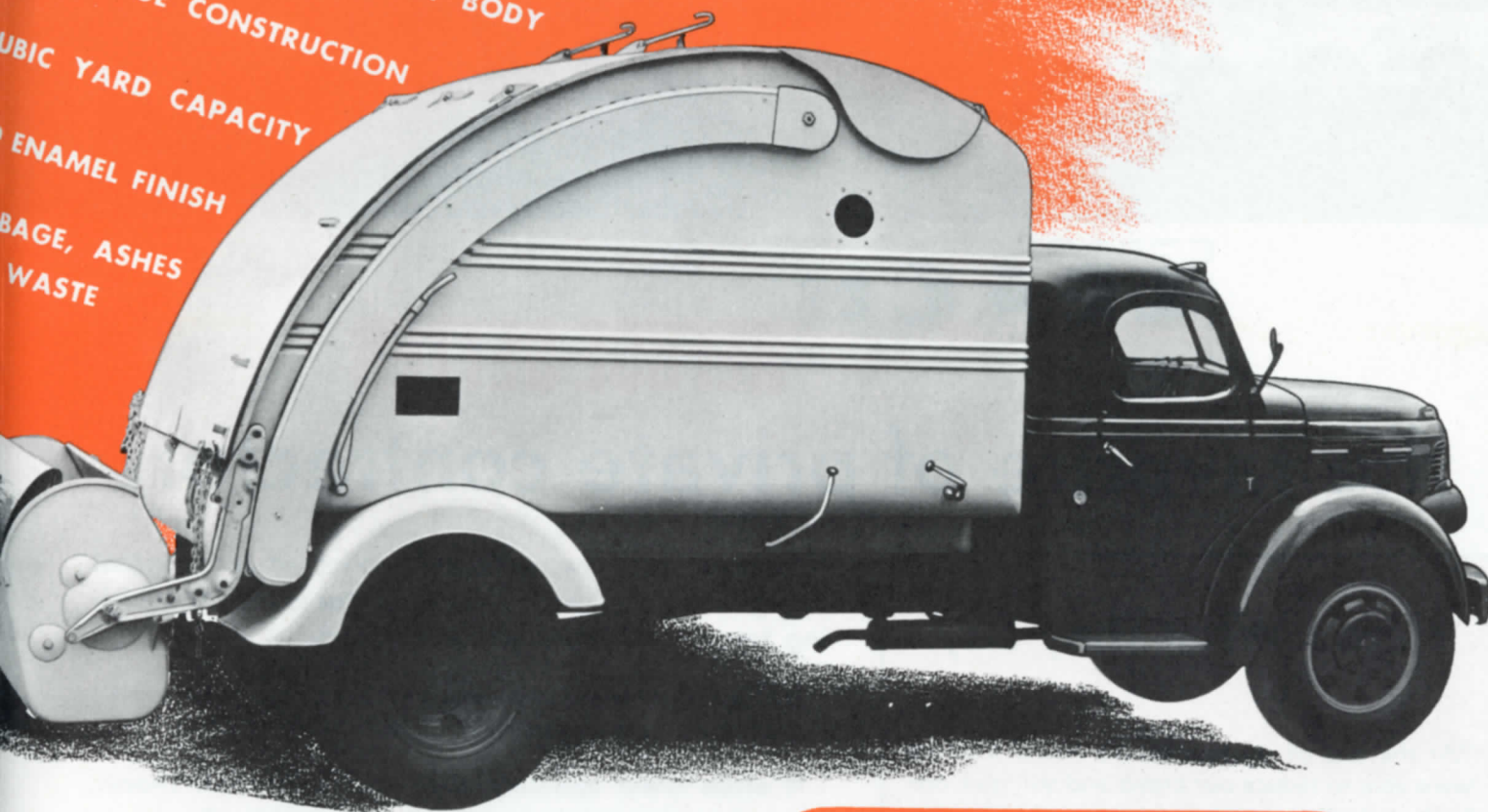
The hip-level loading, large capacity bucket, plus the automatic bucket dumping cycle enable refuse collectors to cover more route miles per day with less effort. The full, 8½-yard loads, the fast, automatic dumping means less lost time . . . fewer trips to dump . . . faster collections.

### STURDY, HEAVY-DUTY CONSTRUCTION

Heavy, 11-gauge carbon steel plates used throughout. Sides and front are reinforced by corrugations for additional strength. All welded body will never loosen up. Heavy, 5-inch steel channel subframe. Unit is finished in durable, high-gloss, baked enamel finish. Owners save money through longer life, fewer repairs . . . more dependable service.



100% LEAK-PROOF BODY  
 HEAVY GAUGE CONSTRUCTION  
 8 CUBIC YARD CAPACITY  
 ENAMEL FINISH  
 GARBAGE, ASHES  
 WASTE



## speeds collections

... where loose garbage, ashes and other non-separately from general refuse. The Leach design—fully automatic bucket and dump-in sanitary . . . efficient . . . low-cost collection. The sturdy construction, the trouble-free maintenance . . . assure low operating costs.

### SANITARY, LEAK-PROOF BODY

The seamless, welded body . . . plus the special gaskets on rear doors that form leak-proof seal when closed give a water-tight, drip-proof construction at any load level. Offensive odors, scattered refuse, flies and other unsanitary conditions are reduced for more sanitary collections.

### SIMPLE, COMPACT DESIGN SAVES MONEY

The hydraulic system and all other working parts are simple in construction for easy, trouble-free service, ruggedly built to give years of service. The compact design requires only a relatively light chassis which means lower initial cost, longer truck life, as well as savings on gas, oil, tires, lower maintenance cost, year in, year out.

## Specifications

### LEACH REFUSE-GETTER MASTER

Capacity—8½ cubic yards  
 Net weight—4,654 pounds

Truck Requirements—Minimum distance from cab to center line of rear axle—71½ inches.

Truck selected must be capable of carrying net weight of body (4,654 lbs.) plus weight (8½ cu. yd.) of material to be collected.

### A Companion Unit—The Leach Packmaster

AVAILABLE IN  
 9—12—15—20  
 CUBIC YARD  
 CAPACITIES



Specializing in the collection of compactible waste materials such as trash, paper, wrapped garbage—the Leach Packmaster is equally excellent for collecting ashes. For complete details write,

**The Elgin Corporation, 231 S. La Salle, Chicago 4, Ill.**





# LEACH REFUSE-GETTER

## the favorite of private contractors

### Here's What They Say:

"At the end of six months we found that we were able to reduce our crews and still give one trash collection and two garbage pick-ups per family, per week. Also, to our surprise, we found that we could continue this service at the nominal fee of 50¢ per family unit per month. We think this is very good when prices are going up everywhere."

"My help says it cuts the labor in two . . . the people in our city have been pleased with it too. At first it created quite a bit of talk and excitement. . . I would recommend it to anyone. Its been in use six days a week and never caused a bit of trouble. . . Its cleaner and sanitary."

"The operators are really proud of the job . . . due to the easy loading and its big capacity the truck saves many trips to the dump."

"I am enjoying a decrease in collection costs. The men are able to handle from 10% to 15% more collections this year than last year with other equipment. Work is easier on men too."

Wherever wet, raw garbage is collected for disposal to pig farms the Leach Refuse-Getter is the outstanding favorite with private contractors.

- **It offers lower initial cost**—the compact design requires only relatively . . . less expensive . . . light truck chassis.
- **It offers lower operating costs**—the light truck chassis, means greater savings on gas, oil, tires, brakes, etc.
- **It offers lower maintenance cost**—the simple, rugged design of all parts means longer, trouble-free service . . . fewer, less costly repairs, year in, year out dependability.
- **It offers safer operation**—the hip-level loading and automatic operations reduce accidents, insurance claims.
- **It offers sanitary, neat collections**—objectionable odors, scattering of bacteria laden garbage eliminated.
- **It offers more pleasant working conditions for route men**—increases efficiency . . . reduces employee turnover.
- **It offers improved health conditions**—prevents disease carrying insects, rodents having access to germ laden garbage.

*the* **elgin** *Corporation*

231 SO. LA SALLE ST., CHICAGO 4, ILL.

1949