



*Greatest Compaction Ever—
Leach 2-R Packmaster*

LEACH
GUARANTEED QUALITY

AMERICA'S MOST EFFICIENT REFUSE COLLECTION SYSTEMS



kmaster[®]...





The Leach 2-R Packmaster[®]...



undisputed leader in the industry

...designed right to perform right!



Most modern factory in the world devoted to the manufacturing of refuse equipment!

For over 77 years of manufacturing experience, LEACH has realized the paramount importance of integrity in all phases of operation. These are the **hidden ingredients** — the quality factors — that have made the LEACH 2-R PACKMASTER universally and enthusiastically accepted by all buying groups . . . contractor, municipal, institutional, and industrial.

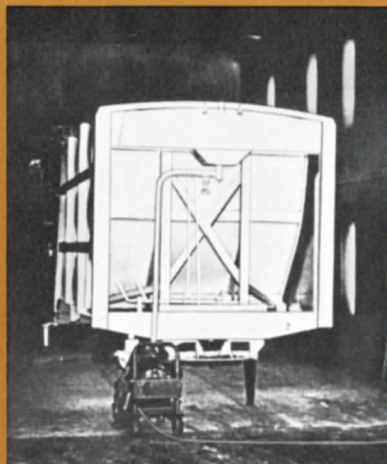
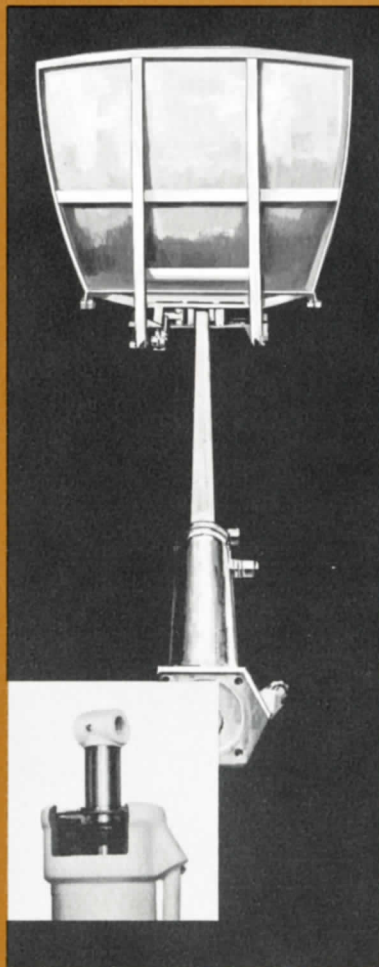
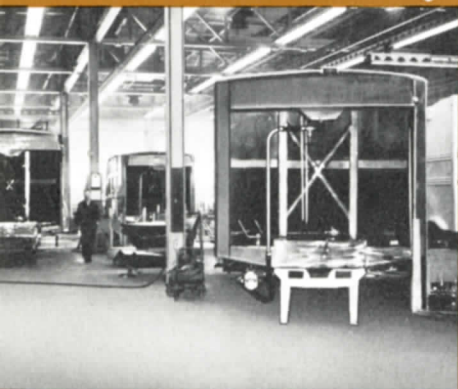
The new LEACH plant in Oshkosh, Wisconsin — home of the 2-R PACKMASTER — is the most up-to-date plant in the world devoted solely to the manufacturing of refuse bodies. All phases of research, design, engineering, and manufacturing are accomplished in this modern plant facility. Rigid quality control requirements are followed through the manufacturing process. Proof of this is the fact that **over 90% of the component parts of every LEACH PACKMASTER** are actually created and produced under this one roof.

The Leach 2-R Packmaster ...

Sound, practical engineering, resulting in economical performance, provides the LEACH 2-R PACKMASTER with a wealth of advantages . . . advantages to the user that assures him maximum working time on the route . . . minimum "down-time" for maintenance.



Rigid Quality Control governs each step of the LEACH 2-R PACKMASTER'S manufacture. Quality specifications designed into the 2-R by the engineering department are carried through-out every step of the manufacturing process.



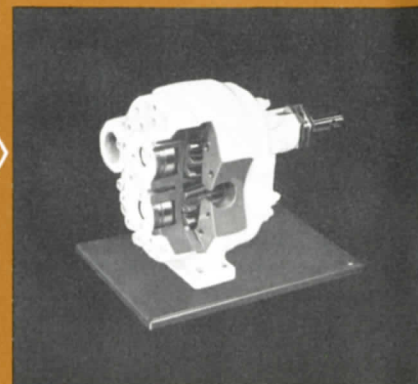
5-Step Baked-on Enamel Finish Process. Every 2-R PACKMASTER receives a 5-step baked-on enamel finish. First it is thoroughly shotblasted . . . then steam cleaned . . . next it is prime coated with a rust-inhibitive primer . . . then a high gloss enamel is applied followed by baking-in of this finish in an oven at 250° Fahrenheit.

Packer Plate and Carrier Plate. These two plates, together with the Push-Out Plate, combine to create triple-action packing that produces the **greatest compaction** ever! Efficient design and rugged construction assures "plus-power" performance under all conditions.



Push-Out Plate and Cylinder. An exclusive LEACH design! Heavily reinforced, the ruggedly constructed Push-Out Plate is capable of exerting pressures far beyond its maximum use. Two single-stage cylinders . . . one double-acting and one single-acting . . . actuate and hold the Push-Out Plate during the packing operation. The powerful double-acting cylinder actuates the Push-Out Plate when the load is discharged.

Hydraulic Pump. LEACH'S precision-built hydraulic pump is designed specifically to deliver high pressures at low engine speeds with maximum reliability! Gear specifications in pump which require tolerances of 3/10,000 of an inch are an example of its outstanding performance.



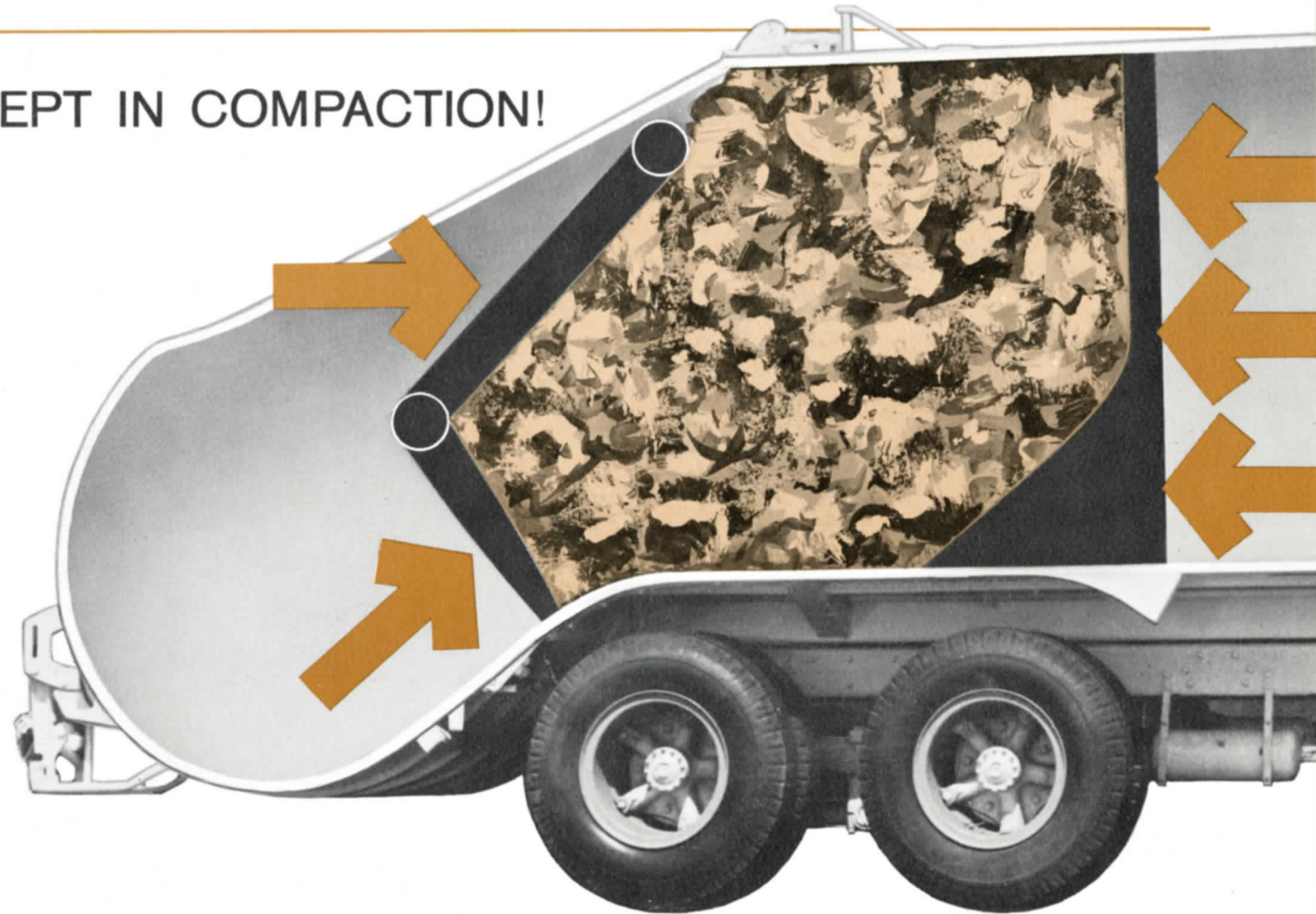
unequaled in compaction

...with these time-proven, cost-saving features!

SOUNDEST CONCEPT IN COMPACTION!

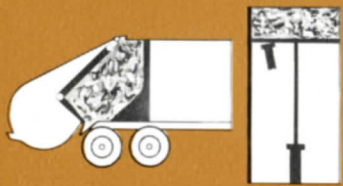
- *Bigger Loads!*
- *Fewer Trips!*
- *Greater Savings!*

The "Vise of Pressures" . . . formed between the packing and compaction plates . . . creates a **compaction density** unequaled in refuse history — up to 1,000 pounds per cubic yard of dry household refuse.



The Leach 2-R Packmaster's

Triple-Action Packing



1 Packing begins. Packer Plate pushes upwards. Carrier Plate pushes forward. Push-Out Plate moves towards rear. Refuse is compressed between.



2 Load builds up as Packer Plate continues to push one hopper-load after another into body.



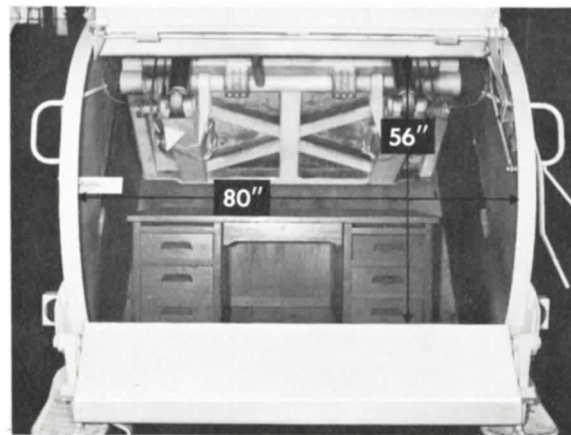
3 As load becomes larger, Push-Out Plate moves to front of body and continuing pressures from three-way compaction compress refuse into a denser and denser mass.



4 Fully compacted load is now ready to be discharged by Push-Out Plate . . . and another record-setting payload has been achieved.

Triple-Action Packing design is another triumph for LEACH advance engineering. In the above sequence we have seen how the LEACH 2-R PACKMASTER produces huge, fully compacted . . . maximum loads. Envy of the industry, the secret of the 2-R's unrivaled success is its consistent packing performance. Practical, sound engineering design in its packing components is at the heart of its success.

Huge 2-Yard Hopper



Holding a full capacity of 2 cubic yards, the 2-R hopper is capable of handling an average size office desk. Low loading level is 5-inches below frame . . . helps eliminate muscle strain. Large size also reduces number of packing cycles thereby reducing wear on packing mechanism.

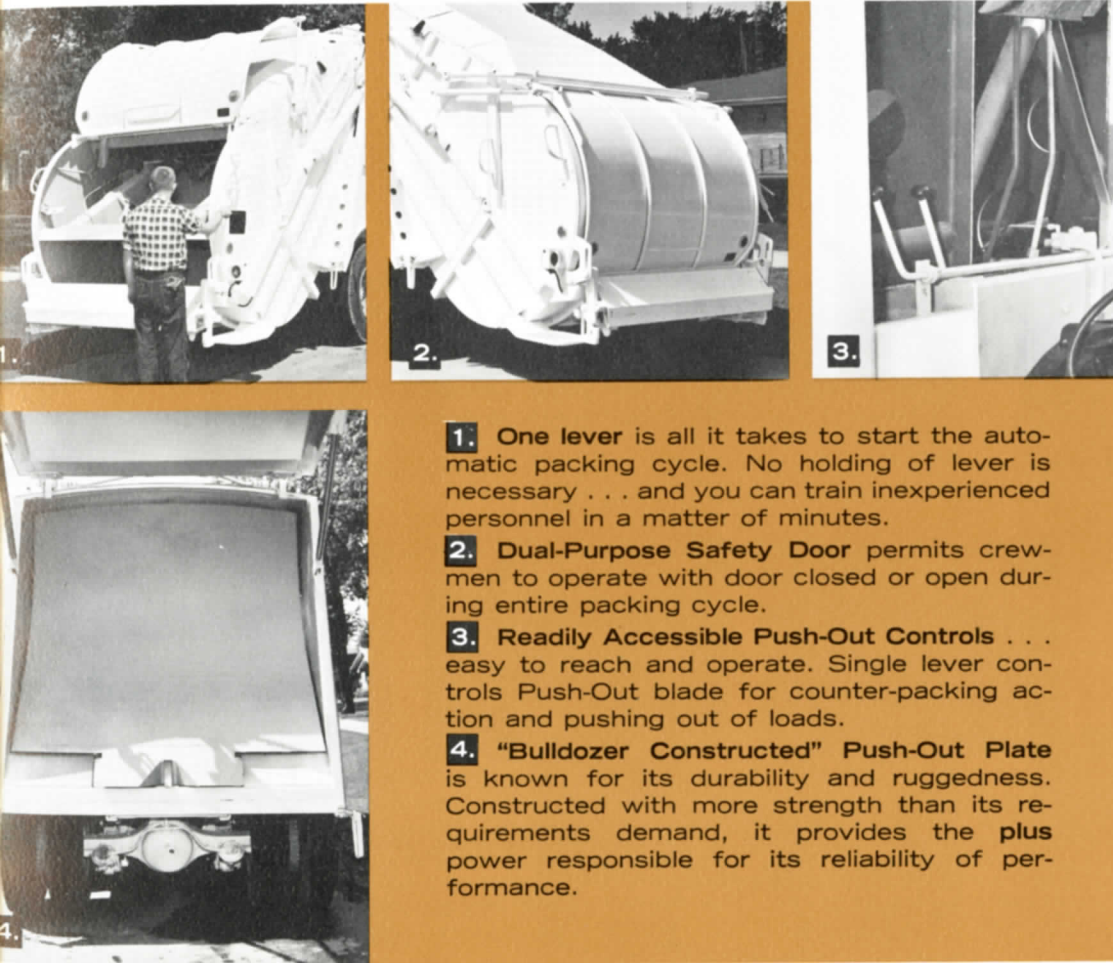
Takes all types of refuse

Boxes, crates, oil drums, chairs, sofas, mattresses—the LEACH 2-R PACKMASTER takes them all! The PACKMASTER picks up everything the first time around. No need to schedule an auxiliary truck for special items. There are virtually **no restrictions** as to the refuse it can handle. Commercial container stops and household garbage pick-ups can be inter-mixed . . . all on one route!



"Buyer Benefits" proven in performance ...recommended by owners everywhere!

Designed for the Operator



- 1.** One lever is all it takes to start the automatic packing cycle. No holding of lever is necessary . . . and you can train inexperienced personnel in a matter of minutes.
- 2.** Dual-Purpose Safety Door permits crewmen to operate with door closed or open during entire packing cycle.
- 3.** Readily Accessible Push-Out Controls . . . easy to reach and operate. Single lever controls Push-Out blade for counter-packing action and pushing out of loads.
- 4.** "Bulldozer Constructed" Push-Out Plate is known for its durability and ruggedness. Constructed with more strength than its requirements demand, it provides the plus power responsible for its reliability of performance.

Designed for Easy Maintenance



- 1.** Easy Accessibility for Maintenance. Cylinders and controls are easy to get at . . . easy to operate.
- 2.** Service School. Free, on-the-job instruction and maintenance training by experienced factory-trained service engineers is offered exclusively by LEACH.
- 3.** Quality Guarantee on all component parts used in the manufacture of the LEACH 2-R PACKMASTER.

For better performance...lower operating costs...longer working life, use only GENUINE LEACH PARTS.

The Leach 2-R Packmaster

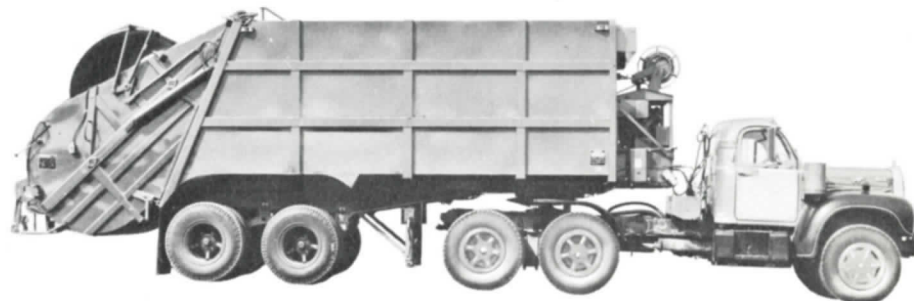
available in 3 sizes



20-YARD 2-R—Many users, both single unit or fleet, have reported on the substantial savings that have resulted from the operation of this "giant-hopper" PACKMASTER . . . unrivaled for day-in and day-out dependability.



25-YARD 2-R—Contractors and municipalities can attest to the time-saving ability of this "big-capacity" unit. Rugged beyond comparison, it is an ideal model for jobs requiring fast and efficient collection of large amounts of refuse of all kinds.



THE VERSATILE 31-YARD 2-R—Designed for the toughest jobs that service demands, this all-purpose LEACH 2-R PACKMASTER offers the user an unequalled opportunity to solve the most difficult refuse-removal problems . . . under a variety of collection situations . . . and at considerable savings.



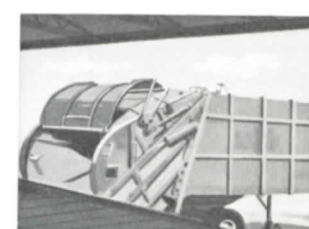
RESIDENTIAL ROUTES

This 31-yard 2-R PACKMASTER is just right for larger residential routes—a durable, low-maintenance unit that enables you to make fewer trips to and from disposal areas . . . makes every load a payload!



COMMERCIAL ROUTES

No matter how big or complicated the route, you can always be assured of fast, efficient collections with *virtually no restrictions* as to types of refuse . . . and maximum payloads assured.



DUAL PURPOSE STATIONARY PACKER

The 31-yard 2-R PACKMASTER, supplied with auxiliary power and positioned at a dock or loading platform, performs ideally as a stationary packer . . . and with *no dock construction costs*. With all its aforementioned capabilities as a mobile packing unit, the 31-yard is destined for a most useful future because of its unique versatility and adaptability.

The Leach 2-R Packmaster

accepted* by every type of user!

Contractors

Top consistency in payloads . . . low maintenance . . . long equipment life are the profit factors that have made the reputation of the LEACH 2-R PACKMASTER the **Number One Accepted** compaction unit among contractors.



Municipalities

Cities of many sizes—from all sections of the country and overseas—appreciate all the LEACH 2-R PACKMASTER benefits, especially fast, efficient collection with **virtually no restrictions** as to types of refuse.



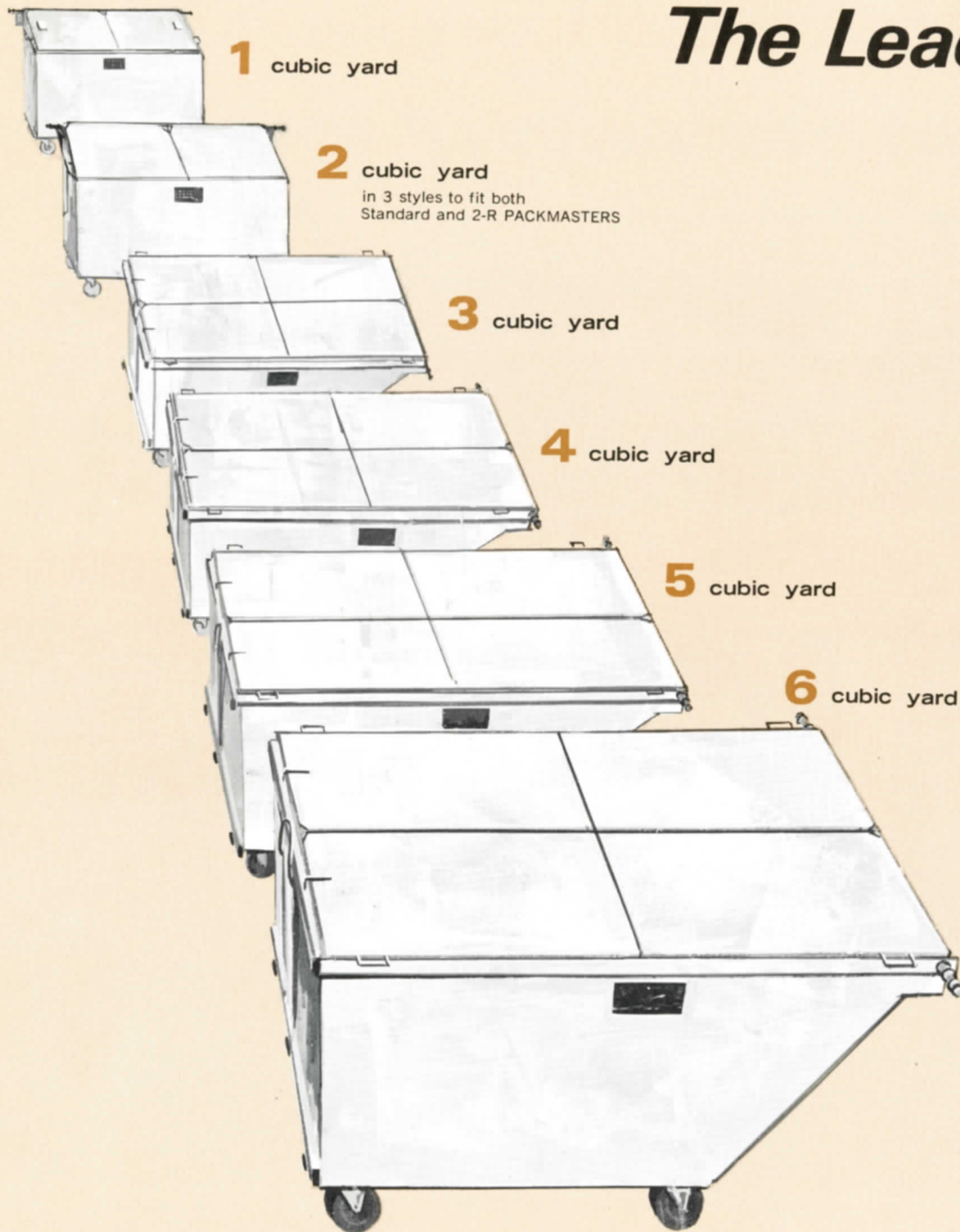
Industries

Growing American industries, confronted with expanded refuse disposal problems, have come to recognize the many advantages that can be profitably gained through combined use of the LEACH 2-R PACKMASTER and the LEACH Container System.

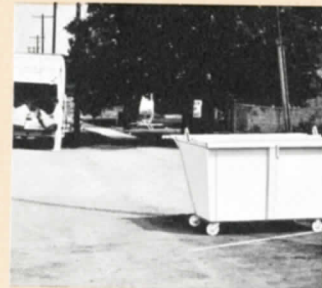


* **ACCEPTANCE** is the reward of leadership—leadership that has been justly earned. Acceptance is the favorable reception that is established when the manufacturer has produced equipment that has been profitable and beneficial to the buyer. In the case of LEACH, it means a concept that provides compaction vehicles that satisfy the **total** sanitation needs of the industry.

The Leach 2-R Packmaster ...



The 2-R PACKMASTERS with LEACH® ATTACHABLE CONTAINERS provides the most streamlined, efficient refuse material handling system in the Sanitation Industry. Completely automatic, it eliminates costly, inefficient, drum-at-a-time pickups. Available in ten sizes, there's a LEACH CONTAINER to meet your needs. With LEACH CONTAINERS, refuse remains fireproof, ratproof, and leakproof until pick-up time. Rugged, quality-built LEACH CONTAINERS feature such built-in extras as 5-step baked-on enamel finish . . . heavy duty roller bearing wheels . . . hard rubber casters, and continuous welding at all seams!



RESIDENTIAL

Eliminate "back-alley" rubbish and foul odors by strategically placing sanitary LEACH CONTAINERS in residential neighborhoods and housing development areas, thus saving both time and manpower. Hundreds of municipalities of every size are benefiting from the fast, efficient pickups that are now made possible by the LEACH CONTAINER SYSTEM.

COMMERCIAL

Plants of all sizes and types have found it to their advantage to establish a highly mobile LEACH CONTAINER SYSTEM . . . a system that permits widely dispersed containers to be wheeled to a central loading area where they are dumped automatically. Other larger containers may be strategically placed for the PACKMASTER pickup. Ask your distributor to show you the innumerable possibilities of the various LEACH Systems.

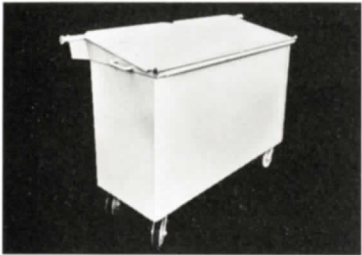
THE LEACH 2-R PACKMASTER INTERMIXES RESIDENTIAL AND COMMERCIAL ROUTES WITH NO LOST TIME!

adaptable to a fully containerized system!



Mobile...

LEACH 1-yard Containers roll smoothly, effortlessly on large 6-inch wheels — can be rolled down narrow aisles and corridors . . . pass easily through standard doorways.

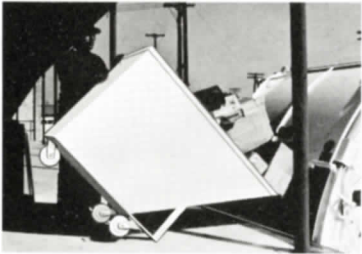


Sanitary...

Durable, 14-gauge steel construction with continuous welding at all seams assures a sanitary container that has won the approval of health departments everywhere!

Versatile...

Spot LEACH CONTAINERS in key locations in your plant but, remember, they can be easily moved from place to place as required. LEACH versatility simplifies storage — speeds disposal.

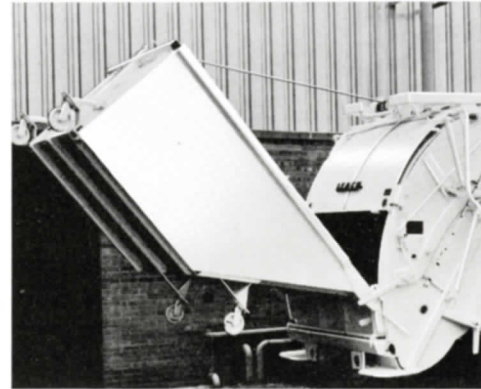


Container Trains...

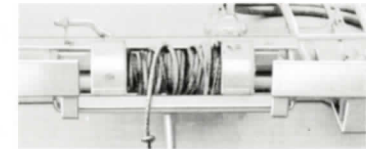
When filled, LEACH CONTAINERS can be hooked together "train-wise" and towed by a pilot truck to the LEACH 2-R PACKMASTER where they are emptied. LEACH will equip its containers with any hitch you or your customers may now be using to mobilize other equipment.



New Leach Overhead Winch-Type Hoist

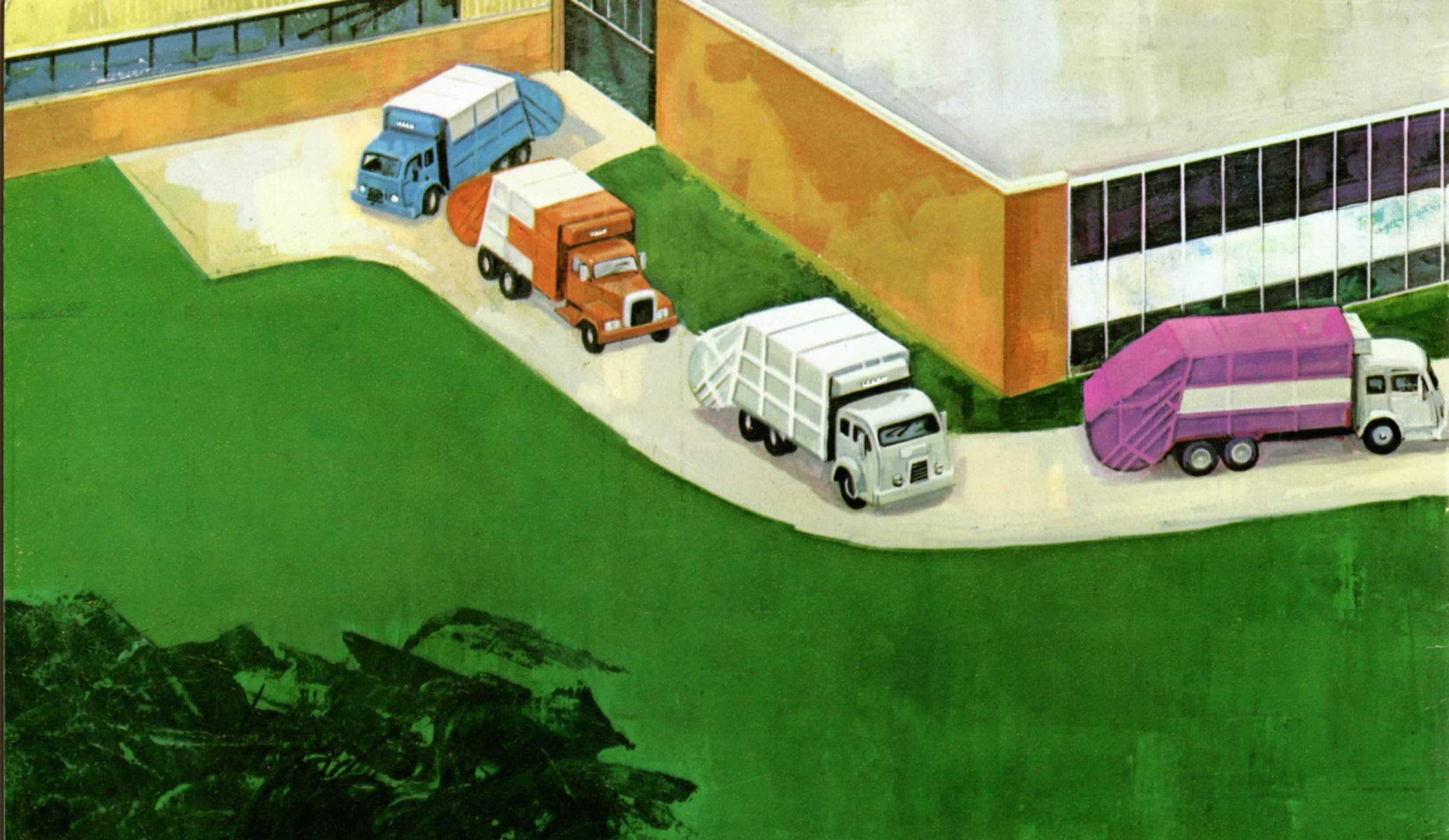


Now LEACH provides you with a hoist that's constructed lower so as to allow overhead clearance. This rugged, hydraulically operated hoist, handles **any** size LEACH CONTAINER up to 6 cubic yards and has a greater lifting capacity — up to 8,000 pounds. Cable spool is tangle-free. A kit is available for field installation.



Leach 2-R Packmasters and Leach versatile Containers... a perfect combination

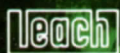
Everywhere, contractors, municipalities, industries, and institutions are enjoying the many advantages and economies made possible by LEACH PACKMASTER-CONTAINER SYSTEMS. Your Leach distributor will show you how your operations in refuse storage and removal can be systematized.



Sanitation is our only business



ELGIN LEACH CORPORATION



SANITATION HEADQUARTERS
222 West Adams Street • Chicago, Illinois 60606

