

LEACH® *SaniCruiser*

LEACH



SaniCruiser

SEWELL

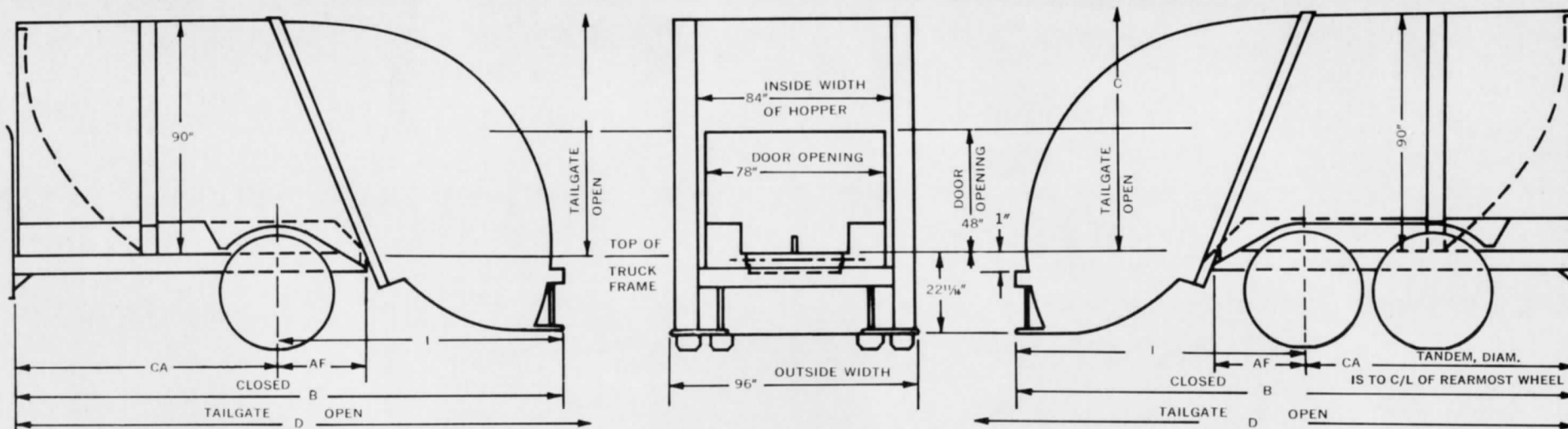


SPECIFICATIONS

SPECIFICATIONS

LEACH®

SaniCruiser



DIMENSIONS

SINGLE AXLE

CAPACITY	AF	B	C	CA	D	I	NET WEIGHT	HOPPER CAPACITY
16 YD.	39 1/2	205 3/8	150	102*	297	103 3/8	10,860	2 YD.
17 YD.	34 1/2	218 3/8	150	120*	300	98 3/8	11,480	2 YD.
20 YD.	34 1/2	233 3/8	150	135*	325	98 3/8	11,690	2 YD.

*Note: CA dimensions shown may be shorter or longer depending on load distribution limitations and turning radius requirements. CA must be usable with no obstructions protruding above frame. CA is measured to center line of rearmost axle.

TANDEM AXLE

CAPACITY	AF	B	C	CA	D	I	NET WEIGHT	HOPPER CAPACITY
20 YD.	25 1/2	233 3/8	150	144*	325	89 3/8	11,690	2 YD.
25 YD.	30 1/2	260 3/8	150	166*	352	94 3/8	12,280	2 YD.

*Note: The truck selected must be capable of carrying net weight of body plus weight of refuse to be collected. On Tandem Chassis CA dimension is to C/L of rearmost wheel.

Container attachment is available on 16, 17, 20 and 25 cubic yard models. Safety Door is standard for 16, 17, 20 and 25 cubic yard models. Specifications subject to change without notice. The SaniCruiser is manufactured by LEACH COMPANY, OSHKOSH, WISCONSIN and is sold nationally through the distributor organization of ELGIN LEACH CORPORATION.

Special Note: Truck equipped with diesel engine requires full variable speed governor.

BODY

1. 16 to 25 yard capacities.
2. Sides and top are made of 11 gauge steel. Bottom is 11 gauge and 5/16" thick steel.
3. Sides, front and rear reinforced with electrically welded box-sections.
4. Contents of body sealed off from outside during compaction period.
5. Steps and grab handles both sides of tailgate.
6. Buzzer system provided at rear to enable loaders to signal driver.
7. Load is pushed out by simple, easily maintained double acting cylinder.

FINISH

Baked on enamel finish.

TAILGATE

1. 2 cubic yard hopper capacity.
2. Constructed of EX-TEN or equal alloy steel.
3. Packer plate constructed of EX-TEN steel.
4. Opens wide and stays clear of unloaded refuse when driving from unloading area.
5. Safety door can be operated automatically.
6. Single lever-control operates packing mechanism.



Sanitation is our only business

ELGIN LEACH CORPORATION



SANITATION HEADQUARTERS

222 WEST ADAMS STREET · CHICAGO, ILLINOIS 60606

INTERNATIONAL DISTRIBUTION:
ELGIN LEACH INTERNATIONAL, INC.
222 WEST ADAMS STREET · CHICAGO, ILLINOIS 60606