

# LEACH 2-R Packmaster SPECIFICATIONS

- rugged - strong - greatest compaction in the industry

# LEACH



SYSTEMS IN

SANITATION



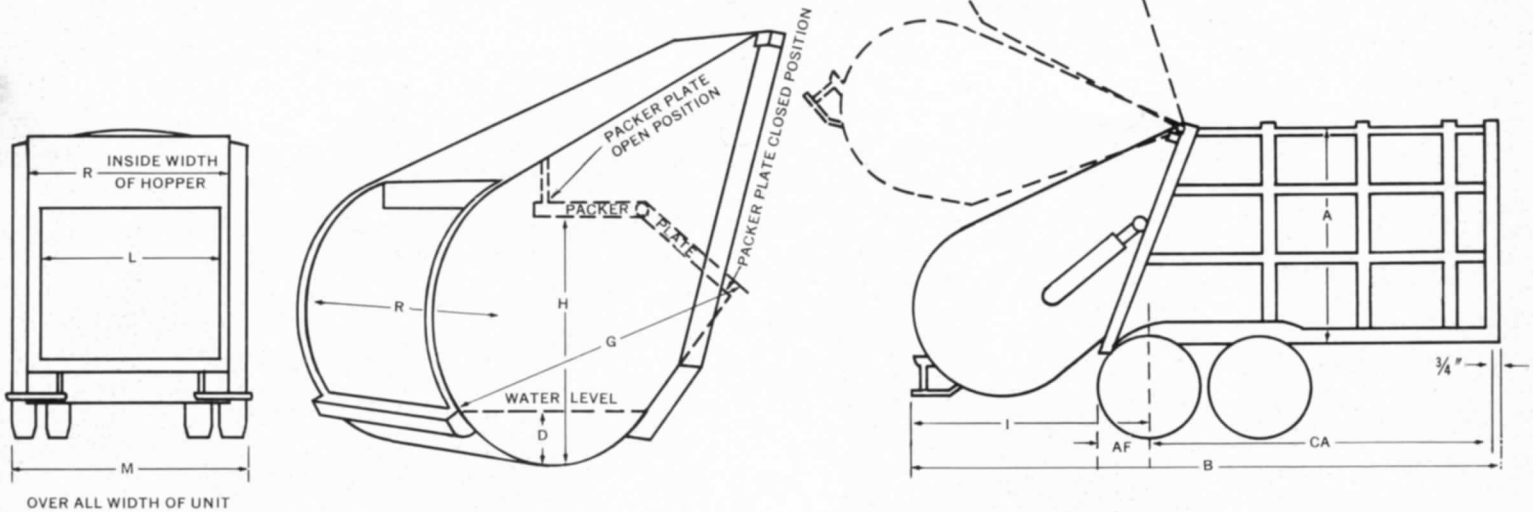
**LEACH**  
GUARANTEED QUALITY

AMERICA'S MOST EFFICIENT REFUSE COMPACTION UNIT



# SPECIFICATIONS

## LEACH 2-R PACKMASTER PUSH-OUT BODY 20, 25 AND 31 CUBIC YARD SIZES



### DIMENSIONS

Capacity	AF	B	CA*	I	A	L	M	R	Loading Height	Net Weight	Hopper Capacity	D	G	H
20 YD.	19 $\frac{1}{4}$ "	249 $\frac{3}{4}$ "	148 $\frac{1}{4}$ "	100 $\frac{3}{4}$ "	96"	74"	96"	80"	5" Below Truck Frame	13,440	2 YD.	16"	82"	56"
25 YD.	19 $\frac{1}{4}$ "	270 $\frac{3}{4}$ "	169 $\frac{1}{4}$ "	100 $\frac{3}{4}$ "	96"	74"	96"	80"	5" Below Truck Frame	13,740	2 YD.	16"	82"	56"
31 YD.	19 $\frac{1}{4}$ "	316 $\frac{3}{4}$ "	215 $\frac{3}{8}$ "	100 $\frac{3}{4}$ "	96"	74"	96"	80"	5" Below Truck Frame	15,590	2 YD.	16"	82"	56"

NOTE: Truck selected must be capable of carrying net weight of body plus weight of refuse to be collected.

\*CA dimension is to C/L of rearmost wheel. CA must be usable with no obstructions protruding above frame. **Truck equipped with diesel engine requires full variable speed governor.** Specifications subject to change without notice.

### BODY

- 20, 25 and 31 cubic yard capacity.
- Sides and top are made of 11 gauge steel. Bottom is 11 gauge and  $\frac{5}{16}$ " thick steel.
- Sides, front and rear reinforced with electrically welded box-sections.
- Contents of body sealed off from outside during compaction period.
- Steps and grab handles both sides of tailgate.
- Buzzer system provided at rear to enable loaders to signal driver.
- Load is pushed out by simple, easily maintained double acting cylinder.

### FINISH

Baked on enamel finish.

### TAILGATE

- 2 cubic yard hopper capacity.
- Constructed of EX-TEN or equal alloy steel.
- Packer and carrier plates constructed of EX-TEN steel.
- Opens wide and stays clear of unloaded refuse when driving from unloading area.
- Safety door can be operated automatically.
- Single lever control operates packing mechanism.



*Sanitation is our only business*

**ELGIN LEACH CORPORATION**



SANITATION HEADQUARTERS

222 WEST ADAMS STREET • CHICAGO, ILLINOIS 60606

INTERNATIONAL DISTRIBUTION:  
ELGIN LEACH INTERNATIONAL, INC.  
222 WEST ADAMS STREET • CHICAGO, ILLINOIS 60606