



**LEACH**  
**FL104**

**F**or the past 37 years I have watched the Leach Company continue to grow into the world's leading manufacturer of refuse collection equipment. Growth which was only made possible by the scores of dedicated men and women who have worked here during that time. Whether in the factory, the field or the office, all were committed to making the best better.

Many of the individuals instrumental in the development of the first generation Leach Packmaster, for example, have now retired but they laid the foundation for the modern Leach Company, and its commitment to product excellence and superior customer service.

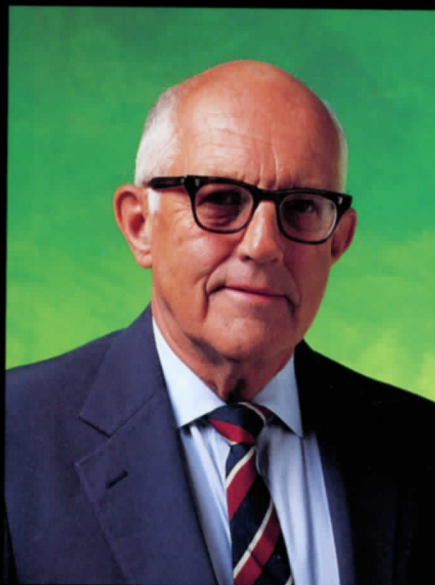
I am equally as proud of our younger employees, many of whom followed in their parents and even grandparents footsteps. Because they

possess the same skills and work ethic of the previous generation, I have never been more confident in the future of the Leach Company or its ability to meet the rapidly changing needs of our industry.

The role the Leach Company has played over the years in shaping the future of today's refuse collection industry is of equal pride to me. I can recall as a child my father's excitement and pride as the very first "Garbage Getter" or "Refuse Getter" as it later was known became a reality. But that was almost 60,000 units ago.

Now, with the introduction of the new Leach FL104, I know how my father must have felt back then. And you have my personal commitment as well as that of everyone at the Leach Company that the FL104 is better than any other front loader on the market.

*David C. Leach*  
David C. Leach



**FL104**

# The Shape of Things to Come.

Since 1932, vision and a commitment to leadership have helped the Leach Company shape the future of an industry.

Although the very first rear loader introduced almost 60 years ago was primitive by today's technology, it revolu-



An early Leach "Garbage Getter" or "Refuse Getter" as it became known. The optional rubbish-rack mounted over the cab was designed to hold large items such as chairs and mattresses.

tionized refuse collection forever. Simply and unromantically known as the Leach "Garbage Getter" it had only a six cubic yard capacity. But what it lacked in size was made up for with innovative features which set industry standards for years to come.

Because a commitment to leadership means never being satisfied with the present, the Leach Company continued to move forward. And along the way always breaking new ground...finding a better way.

Every new concept and innovation developed by Leach



## The New LEACH PACKMASTER

The Packmaster was introduced in 1947 and was capable of compressing more waste than any design currently on the market.

was subjected to exhaustive field testing. When a component or new design was tested beyond tolerance levels, it was refined and tested again. And again.

The years of testing and refinement every new product underwent before it was ready to carry the Leach name, has been your guarantee of value, performance and most importantly, satisfaction.

Almost 15 years after the "Garbage Getter" first appeared on the scene, another revolution took place in the industry.

### A New Era Begins.

Leach refuse bodies went from chain hoist and gravity fed to hydraulic compaction and ejection. The new Leach Packmaster® was an all-hydraulic machine with power unimaginable a decade earlier. Its 10, 13, 16, 17, 20 and 25 cubic yard capacity bodies made longer routes possible for more efficient operation. But this was only the beginning of another new era.

Next came the now legendary Leach 2-R®. The rear loader evolution continued with the introduction of the SaniCruiser®, the 2-R11,™ the Alpha® and the Beta®.

Each new design started with a clean sheet of paper in anticipation of the ever changing needs of the industry.

Larger payloads. More powerful hydraulic systems. Stronger, lighter weight materials. Increased compaction ranges. New manufacturing techniques. Tougher... more durable machines. Every innovation a bold move forward.

Today, the future has taken shape in a new direction. It's called the Leach FL104™.

And as you'll discover on the following pages, the FL104 front loader is as revolutionary in concept and design as the "Garbage Getter" rear loader was six decades ago.

**LEACH**  
Committed to Leadership<sup>SM</sup>

# The Future has Taken Shape.

The new FL104 did not happen overnight. It is the product of four intense years of research and development, testing and refinement. The results? A front loader that maximizes payloads, provides superior durability and

offers low o  
And when  
FL104 has be  
more efficie  
the industry



Our Spheriform Rear Door Chamber provides additional packing capacity. The rear door contour-shaped latch-locks are controlled from inside the cab. A compression-type rear door seal helps retain liquids.

**FL 104**

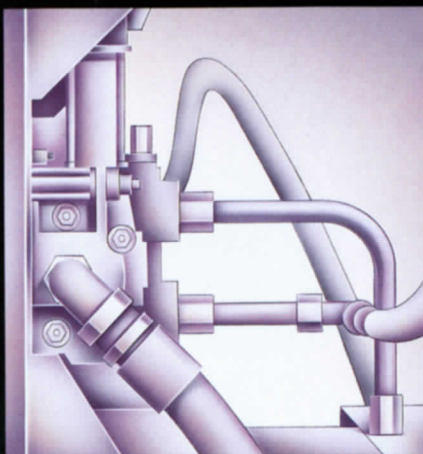
operating and maintenance costs.  
When it comes to packing refuse, the  
unit is engineered to pack more of it,  
faster than any other front loader in  
the industry.

Debris enters the hopper through a 10 cubic yard size container  
opening which can be covered by either a sliding or hinged-top door.  
The sliding-top door is operator controlled from inside the cab while  
the hinged-top door automatically cycles with the lift arms.



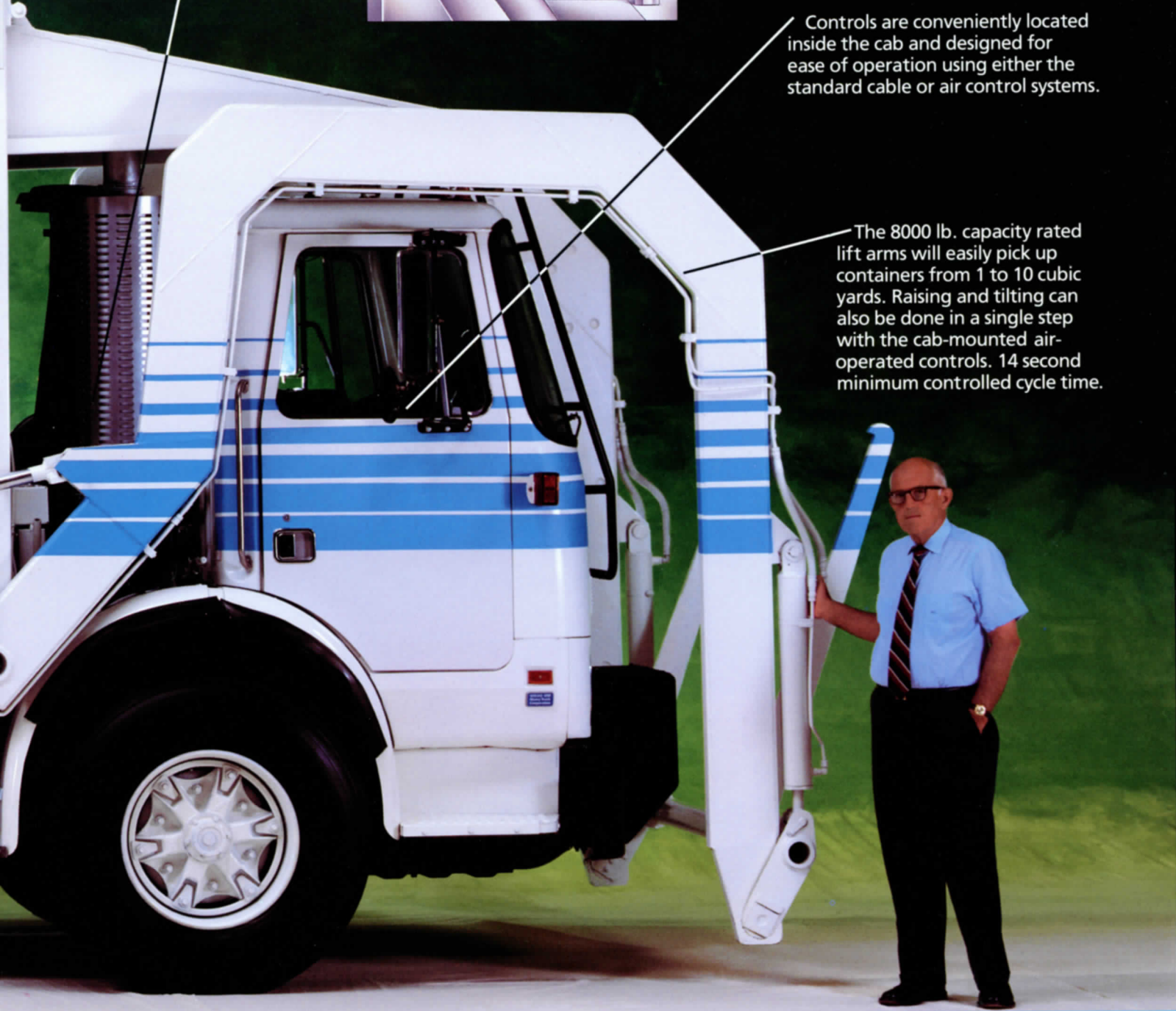
Unit shown not detailed for delivery  
and with optional equipment.

The hydraulic system valve bank has been centrally located in the forward area of the body for ease of maintenance. 3,000 PSI maximum system pressure.



Controls are conveniently located inside the cab and designed for ease of operation using either the standard cable or air control systems.

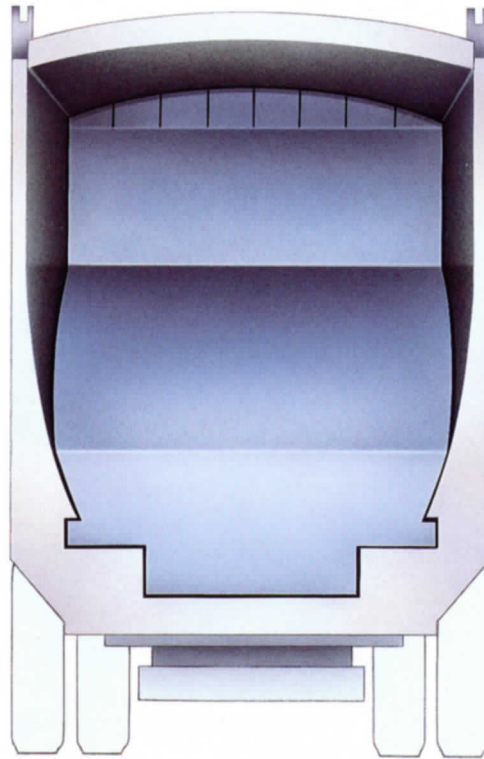
The 8000 lb. capacity rated lift arms will easily pick up containers from 1 to 10 cubic yards. Raising and tilting can also be done in a single step with the cab-mounted air-operated controls. 14 second minimum controlled cycle time.



# The Inside Story

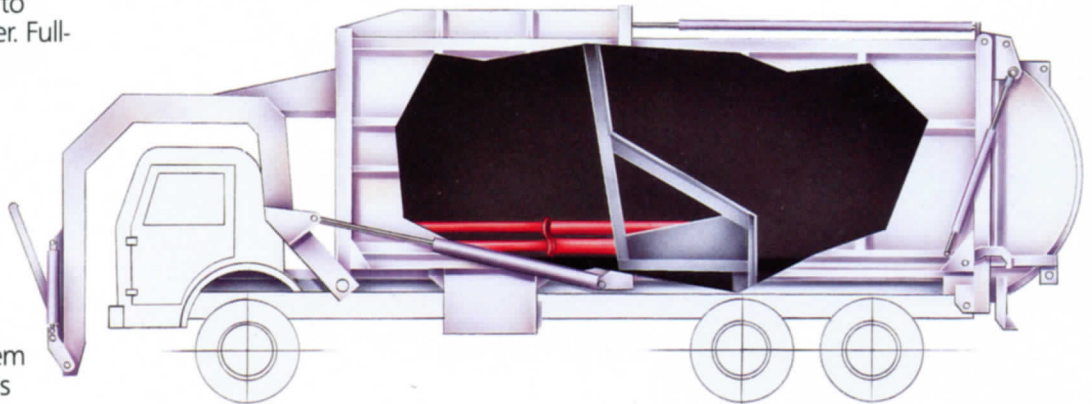
## *Full-length trough and rounded side-wall body.*

At the backbone of the Leach FL104 is a full-length trough and rounded side-wall body design to maximize durability and minimize weight. Unlike competitive units which rely on a substructure, the full-length trough design of the FL104 also offers increased volume. Packing and ejection cylinders have been designed to operate above the floor and out of the way of debris for more efficient operation and longer life. The rounded side-wall body design with exterior reinforcing channels provide superior strength to withstand packing pressures.



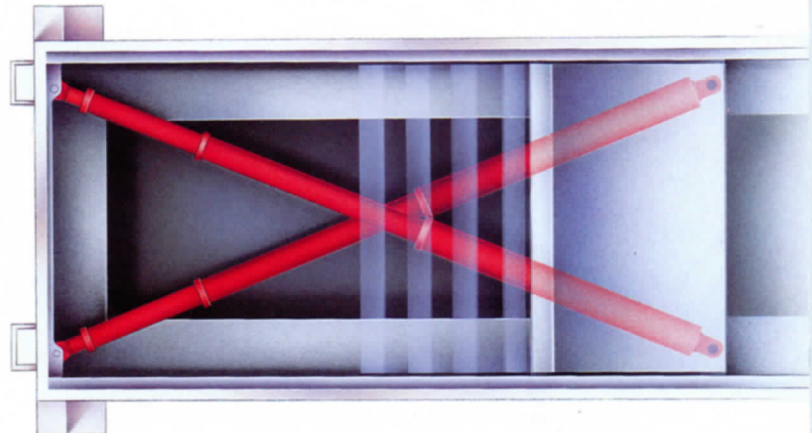
## *Pack and eject plate.*

The design of the pack and eject plate maximizes compacting pressure and volume. The FL104 features a 30 second cycle to clear the 11 cubic yard capacity hopper. Full-pack and full-eject cycle modes are operator controlled. For smooth, even operation, the pack and eject plate moves on high-strength Polyethylene guide-shoes which can be replaced without removing the ejector plate. The full-eject operation takes only 45 seconds and allows the body to remain stationary during unloading. The optional body-tilt system provides easy access for routine chassis maintenance.

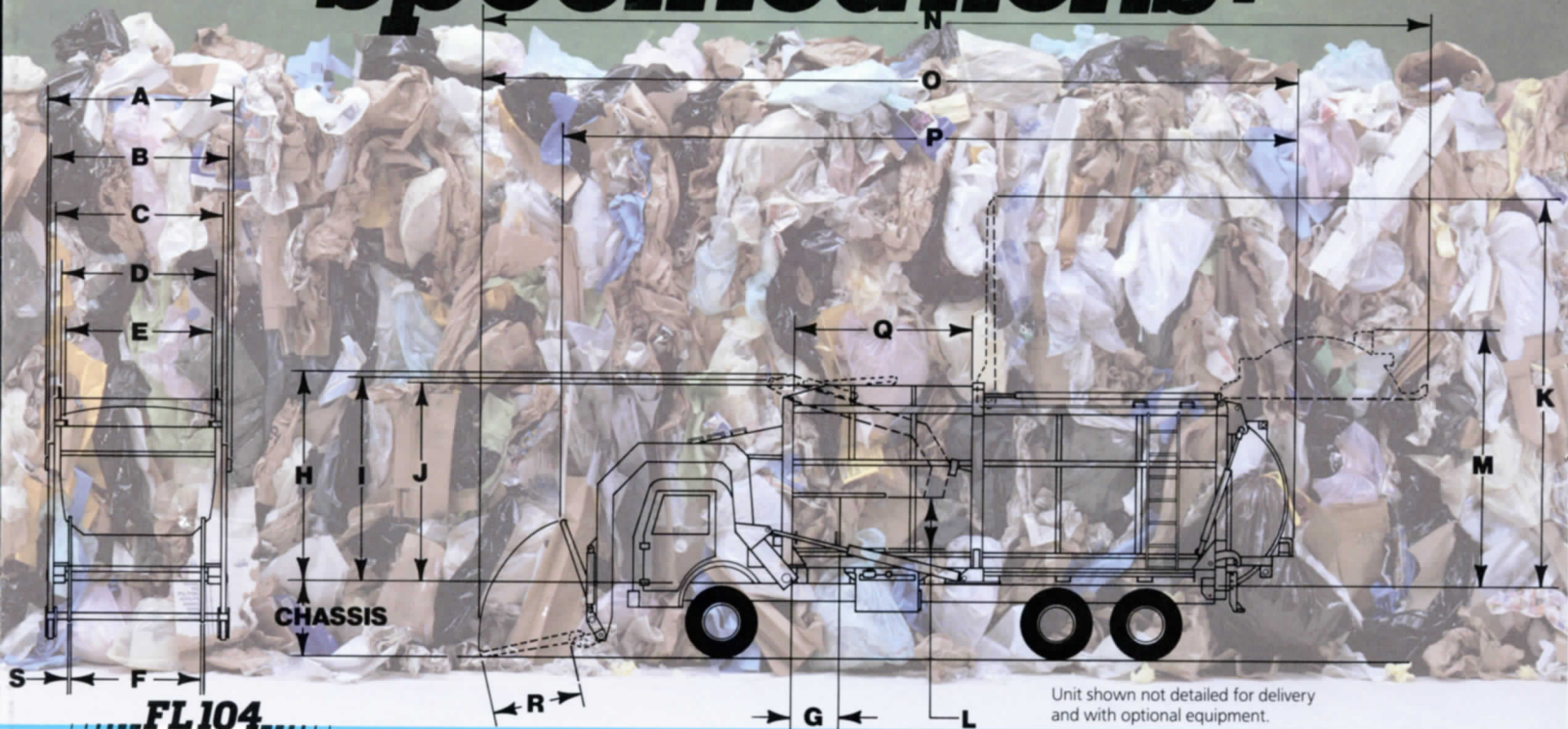


## *Double-acting pack and eject cylinders.*

The scissor-action of the double-acting, telescopic cylinders provides maximum force to the pack and eject plate for smoother and faster operation. Cylinders operate above the floor and out of the way of debris to minimize rod wear and damage.



# Specifications:



Unit shown not detailed for delivery and with optional equipment.

BODY DIMENSIONS	37 CU YD		40 CU YD	
	IN	MM	IN	MM
A) Width overall	102	2591	102	2591
B) Width over lift arms	98	2489	98	2489
C) Width over body	91	2311	91	2311
D) Width inside windscreens	84	2134	84	2134
E) Width inside hopper opening	84	2134	84	2134
F) Width inside forks	74.5	1892	74.5	1892
G) Width side door opening	24	610	24	610
H) Height-chassis to fork in dump position	115.5	2934	115.5	2934
I) Height above chassis with sliding top door	110	2794	110	2794
J) Height above chassis with hinged top door	108	2743	108	2743
K) Height above chassis with hinged top door open	213	5410	213	5410
L) Height side door opening	29.5	749	29.5	749
M) Height above chassis with rear door open	137.5	3492	156	3962
N) Length-rear door open & forks down	523	13284	523	13284
O) Length-rear door closed & forks down	447.5	11366	466	11836
P) Length-rear door closed & forks up	399.5	10147	418	10617
Q) Length of hopper opening	98	2489	98	2489
R) Usable fork length	51	1295	51	1295
S) Fork thickness	1.25	32	1.25	32

## BODY CONSTRUCTION (ALL SIZES)

Sides	10 gauge	80,000 PSI
Top	11 gauge	80,000 PSI
Floor	3/16"	100,000 PSI
Hopper Floor	1/4"	100,000 PSI
Hopper Sides	3/16"	80,000 PSI
Floor Trough	3/16"	100,000 PSI

## TAILGATE (ALL SIZES)

10 gauge	50,000 PSI
Raised & Lowered Hydraulically	
Latched & Unlatched Hydraulically	
Cylinders (2) 3" dia. x 28.62" Stroke	

## PACKING & EJECTION CYLINDER

Scissor-action Packing/Ejection Cylinders  
Double-Acting Telescopic, 3 Stage  
(2) 6 1/4" x 5 1/4" x 4 1/4"

## PACKING & EJECTION PLATE

Upper Plate	11 gauge	50,000 PSI
Lower Plate	3/16"	50,000 PSI
(4) 1 1/4" x 3" x 48" Polyethylene Guide-Shoes		

## HYDRAULIC SYSTEM

Pump 42 GPM at 1200 RPM  
Maximum System Pressure 3000 PSI  
Hydraulic Tank Capacity 40 gallons  
8 Micron In-Line Filter  
141 Micron Suction Line Strainer

## LIFT ARM & FORK MECHANISM (ALL SIZES)

8000 lb Lift Arm Capacity Rated  
Top & Bottom Bars 50,000 PSI  
Side Plates 50,000 PSI  
Full Welded Steel Box Construction  
Torque Tube 4 1/2" OD x 3 1/2" ID 46,000 PSI  
(2) Split Bearings 4 1/2" x 6 1/2" Bronze  
(2) Lift Cylinders 4 1/2" dia. x 40.12" Stroke  
(2) Fork Cylinders 3 1/2" dia. x 23" Stroke

## MINIMUM CHASSIS REQUIREMENTS (ALL SIZES)

GVWR	64,000 lbs
Front Axle	20,000 lbs
Rear Axle	44,000 lbs
Wheelbase	210" - 214"

(Refer to Leach Company Gray Book for Additional Chassis Information)

Due to our constant effort to offer the finest products available, we must reserve the right to change specifications without notice and without obligation to install them on units sold. Illustrations shown may include optional equipment and accessories, and may not include all standard equipment.

Truck selected must be capable of carrying net weight of body plus weight of refuse to be collected.  
CA Must be usable with no obstructions protruding above frame.



***There's More to the Story***



**LEACH**

*Committed to Leadership*

# Nobody is More Committed to Meeting Your Needs Than Leach. Nobody.

## LEACH ALPHA

The versatile Leach Alpha is the ideal machine for residential applications especially when routes consist of alleys, cul-de-sacs and other areas where space to maneuver is limited. Featuring a 3 cubic yard hopper, the Alpha can be equipped to dump containers and will accept most semi-automated cart dumpers. Available in 16, 18, 20 and 25 cubic yard capacity bodies.



## LEACH SCII

Available in 16, 18, 20 and 25 cubic yard capacity bodies, the Leach SCII SaniCruiser® features a 2.4 cubic yard hopper with a 6.5 foot wide opening. Other features include a rear curbside-mounted single-lever packing cycle control, and front streetside-mounted tailgate-lift and ejection single-lever controls.



## LEACH BETA

The high-compactation Leach Beta will give you bigger payloads in both residential and light commercial applications than another unit its size. It has a 3 cubic yard hopper with a 7 foot wide opening. It can also be equipped with container attachments to handle weights up to 12,000 lbs. Available in 16, 18, 20 and 25 cubic yard capacity bodies.



## LEACH S-III

The Leach S-III® is the product of years of refinement and today is available in 13, 16, 17, 20 and 25 cubic yard capacity bodies. It features a single-stage clamp ejection system for faster operation. Tailgate-lift, ejection and packing are all operated by separate, single-lever controls.



## LEACH RC SERIES

The Leach RC Series™ of recycling collectors are available in either truck-mounted (RC23 and RC17) or trailer-mounted (RC17) versions. Both feature an exclusive "Z" to trough floor design to minimize weight and maximize strength and payload capacities. Manual loading is easier because of the low-profile design and lightweight aluminum vertical-sliding side doors. Three equal sized compartments and one double sized bin make collecting and sorting of recyclable materials easier and faster. Body tilts for rear unloading.



## LEACH 2-RII

The 2.7 cubic yard capacity hopper of the legendary Leach 2-RII will pack virtually anything including furniture and appliances into a dense mass. It offers greater strength and durability than any other rear loader its size in the industry. And it's loaded with features to keep maintenance time and costs to a minimum. The Leach 2-RII is available in three legendary body capacities: 20, 25 and 31 cubic yards.



Units shown not detailed for delivery and with optional equipment.

# A Commitment to Building Only the Best.

It seems everyone talks about quality these days. Quality circles. Quality control. Quality this...quality that. At the Leach Company we don't **talk** much about quality — we think it every step of the way.

That's because everyone here has committed themselves to building the best products possible. And has for 104 years. You might say quality is simply a way of life at the Leach Company. We wouldn't have it any other way. And we don't think you should either.

## We Leave Nothing to Chance.

For example, we subject materials used in manufacturing to some of the most demanding inspection standards in the industry. Every component and assembly undergoes a battery of tests to insure they will perform to Leach standards. Field testing and product refinement is a never ending process.

Our engineering and manufacturing philosophy since the beginning has been to rigidly enforce realistic specifications. Only by doing this can we deliver products that perform to your high expectations.

We've also chosen to manufacture in-house 80% of the components used in our products, thereby assuring both you and us of tighter adherences to operating specifications.

While major emphasis has always been placed on building equipment that maximized payloads, we continually strive to produce units with improved durability, performance and lower operating and maintenance costs.



## People Make the Difference.

One of our greatest assets is a highly skilled and dedicated work force. Many of whom are second and even third generation employees. When they join us they already have an understanding of our product line and what goes into it. After all is said and done a product can only be as good as the people who build it.

But our commitment to you doesn't end when a Leach product leaves the plant. Our field service representatives conduct service schools and training sessions which include instruction on safe operating procedures. Training sessions



are held across the country throughout the year and are tailored to meet the needs of both our distributors' and their customers' mechanics and operators. And our Service Department routinely provides you with timely technical information, product updates, troubleshooting and complete operator, service and parts manuals plus other reference materials to make your job easier.



## LEACH

*Signature*

**Original Factory Parts**

## Peace of Mind.

Our inventory of Leach Signature™ Original Factory Parts is one of the most extensive in the industry to make sure you experience as little downtime as possible.

And the Leach family of distributors is strategically located throughout North America and around the world to provide you with superior after-the-sale support.

Put it all together and you have the Leach Total Product Support System™ where a commitment to quality is a way of life. And one of the best reasons for adding the new Leach FL104 front loader to your fleet.

See your authorized Leach Distributor.

# LEACH

*Committed to Leadership*

LEACH COMPANY • 2737 HARRISON ST., P.O. BOX 2608 • OSHKOSH, WI 54903  
414-231-2770 • TELEX 26-2711 • FAX 414-231-2712

International Distribution:  
EL Industries International, Inc.  
P.O. Box 645 • Barrington, IL 60011, U.S.A.  
Telephone 708/382-0004 • FAX 708/382-0053