

4/25/68

GREATEST COMPACTION EVER!



LEACH 2-R
PACKMASTER®
with **PUSH-OUT**



AMERICA'S MOST EFFICIENT REFUSE COMPACTION UNIT!

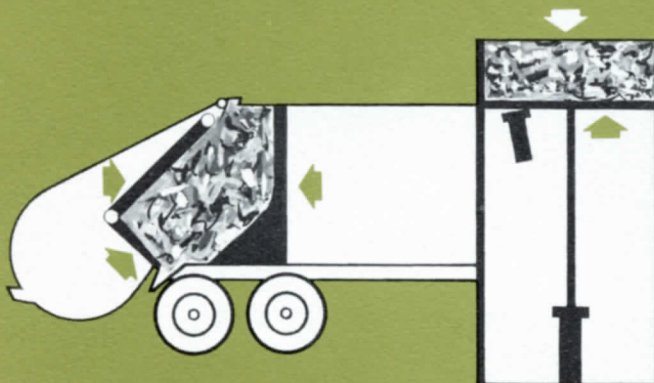
LEACH 2-R PACKMASTER

featuring

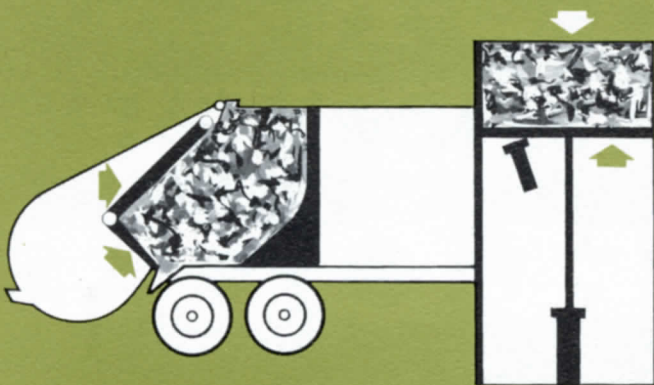
TRIPLE-ACTION PACKING

Another triumph for Leach engineering research

Once again, after considerable research and exhaustive field testing, Leach presents another "first" . . . the ultimate in today's refuse collection unit! Here, in the packing sequence shown, we see how the Leach 2-R Packmaster with PUSH-OUT obtains huge, fully compacted loads that mean maximum efficiency in refuse removal . . . how the 2-R Packing Plate, Carrier Plate, and the new PUSH-OUT Plate, combine, in three directions, to produce the greatest compaction ever achieved in refuse industry history.



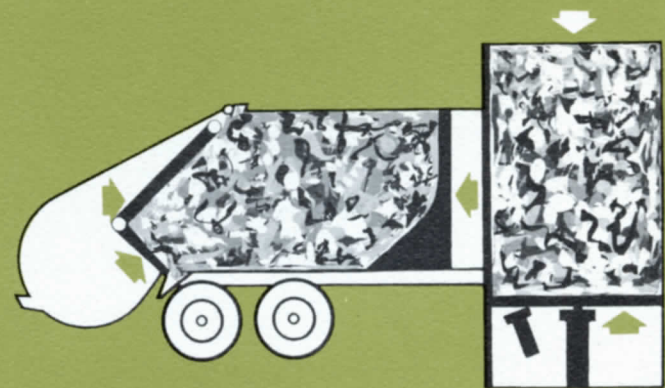
1 Packing begins as Packer Plate moves refuse from hopper into body and starts packing it against PUSH-OUT Plate.



2 More and more refuse is compressed into packer body as Packer Plate continues to scoop refuse from hopper.



3 As Packer body continues to fill against counter-pressure exerted by PUSH-OUT Plate, PUSH-OUT plate automatically keeps moving toward the front of the 2-R Packmaster.

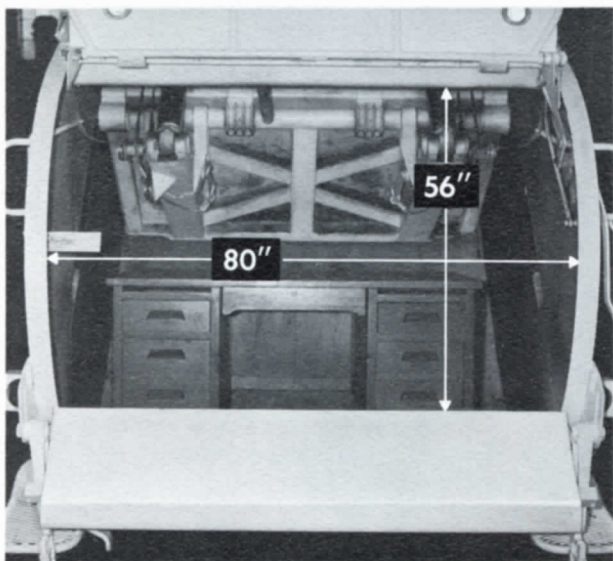


4 Packer Plate is now in fully compacted position . . . *the ultimate in compaction.* The evenly compacted load eliminates all voids and pockets guaranteeing absolute maximum loads!



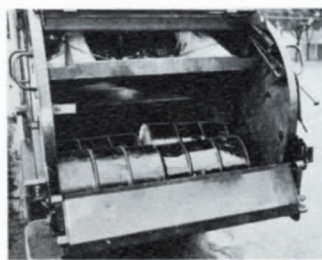
5 Tailgate is now raised and PUSH-OUT Plate *pushes out* all the refuse quickly, simply and cleanly. The cumbersome dump-method has been eliminated.

has proven...positive cost-saving



WORLD'S LARGEST HOPPER

The larger the hopper the fewer the packing cycles and, consequently, less wear on packing mechanism. It's wide, so two men can load at the same time. Low hopper loading height reduces strained muscles and fatigue caused by high, heavy lifting. Capable of handling average-size office desk without breaking it apart, this mammoth hopper eliminates the sending out of an extra truck for a second-time pickup!



TAKES ALL TYPES OF REFUSE

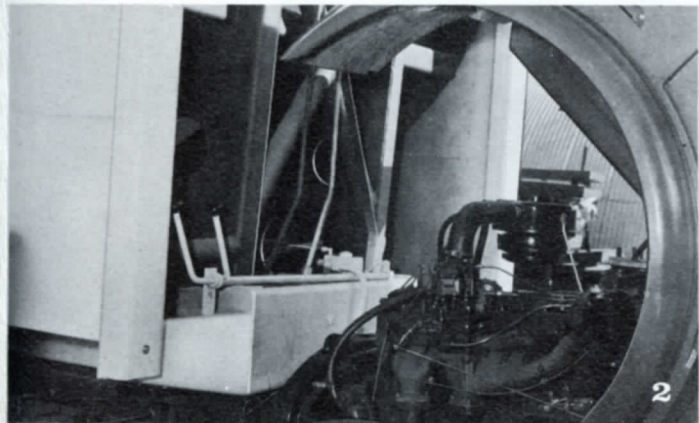
You name it and the Leach 2-R Packmaster will handle it! Bulky cartons, mattresses, 55-gallon drums, water heaters, tree limbs, leaves, brush rubbish, garbage. Anything that can be put into the hopper can be packed into the 2-R Packmaster body. Leave it up to the Leach 2-R Packmaster and you won't have to leave anything behind! With Packmaster's power to snap, crush and compress, more refuse of all types can now be handled!

g features



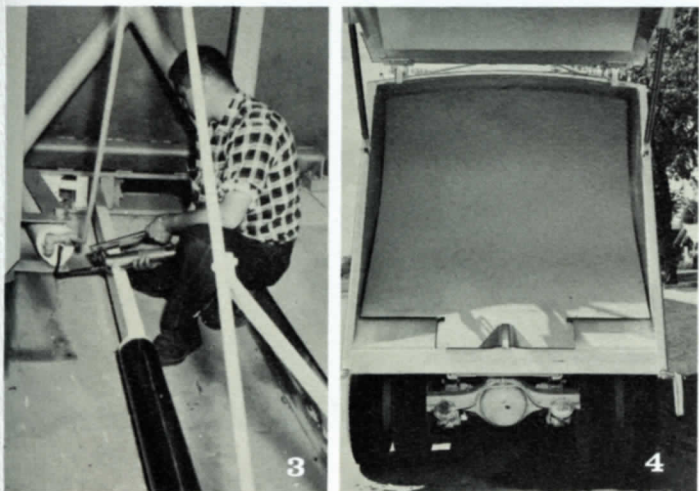
Sound engineering, resulting in economical performance, provides the Leach 2-R Packmaster with a wealth of practical advantages. The 2-R Packmaster is the *Quality-Choice* of both private contractors and municipalities. Its features assure you of *maximum* time on the route . . . minimum "down time" for repairs—truly a quality-constructed unit that will more than repay the amount of your investment over the many years of its useful life.

1 COMPLETE ONE LEVER CONTROL OPERATION . . . DUAL SAFETY DOOR PRINCIPLE Operation of the ingeniously engineered and designed Leach 2-R Packmaster is simplicity itself. *One* lever is all it takes to start the automatic packing cycle. A second touch of the same lever completes the packing cycle. No holding of lever is necessary . . . no problem in training inexperienced personnel. Dual-Purpose Safety Door permits crewman to operate with door closed or open during entire packing cycle.



2 PUSH-OUT CONTROLS READILY ACCESSIBLE Your crewmen will appreciate the simplicity of the 2-R Packmaster's PUSH-OUT control setup. Single lever controls PUSH-OUT blade for counter-packing action, pushing out of load and returning of blade to start position.

3 EASY ACCESSIBILITY AND MAINTENANCE No difficult maintenance maneuvers are required when you service your 2-R Packmaster. The "Push-in-Push-out" cylinders and controls are easy to see . . . easy to get at . . . easy to work with! No need to unload refuse by hand to get at ejector cylinder. Revolutionary in design, all components of 2-R Packmaster's mechanism are readily accessible during all phases of operation.



4 RUGGED "BATTLESHIP" CONSTRUCTION The Leach 2-R Packmaster is constructed with *more strength than its maximum requirements demand!* Sides and tops are made of 11 gauge steel . . . the bottom of $\frac{1}{4}$ " steel plate. A high gloss, baked enamel finish assures you of a hard, chip-resistant finish with maximum protection against rust and corrosion.

5 HANDLES ALL LEACH CONTAINERS Ruggedly-built Leach containers—available in sizes from 1 to 6 cubic yards—provide you with the opportunity to expand your refuse collection service. Just wheel them out . . . then attach to 2-R Packmaster which will automatically lift container and dump contents into hopper.

6 QUALITY-CONSTRUCTED IN WORLD'S LARGEST REFUSE-UNIT FACTORY Recognized as the leader of the larger sized compaction type refuse units, 90% of the component parts required in the construction of the 2-R Packmaster are made right in Leach's modern plant. Rigid quality controls govern each step of its manufacture assuring a superb packer unit that will prove a real credit to your refuse collection operation.



...revolutionizes refuse industry

with **PUSH-OUT**

THE NEWEST CONCEPT IN COMPACTION!

BIGGER LOADS!

FEWER TRIPS!

GREATER SAVINGS!

*Up to
1,000 lbs.
per cubic
yard
dry
household
refuse!*



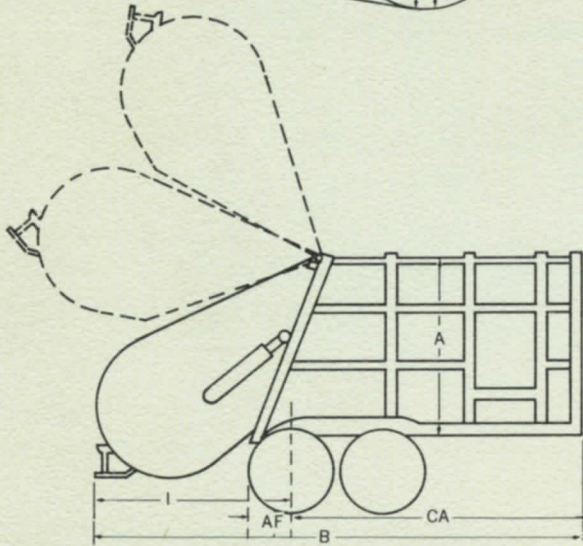
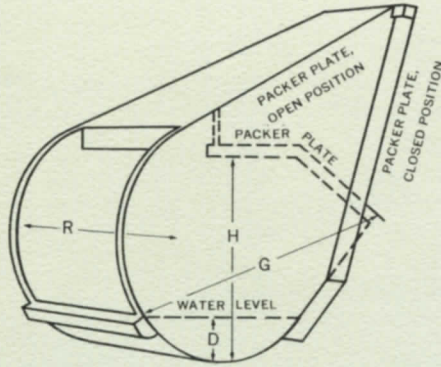
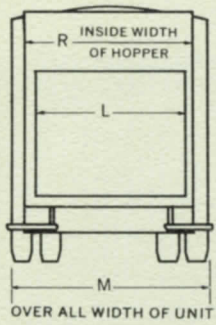
Never before — in any refuse unit — has such extreme pressure been exerted at the points of compaction! With the Carrier Plate providing pressure in one direction, the Packing Plate exerting pressure in another direction and the PUSH-OUT Plate exerting a counter-pressure action, the refuse is placed in a vise of pressures. The load is evenly compacted into the smallest possible area.

As more and more refuse enters the body of the 2-R Leach Packmaster, the PUSH-OUT blade automatically keeps moving to the front of the unit. When the Packmaster arrives at the disposal area, the entire load is pushed out quickly, thus eliminating the necessity of raising the body to dump the load.

Contractor after contractor and city after city can attest to the substantial savings that have resulted from the use of a single unit or even a fleet of Packmasters. The advantages are obvious! Greater compaction means bigger loads . . . fewer trips to and from dump areas. More collections can be made because less time is spent in unproductive travel to or from those areas. Also, the Leach 2-R Packmaster can operate with a minimum sized crew.

All in all, the unequalled compaction that is yours with the Leach 2-R Packmaster with PUSH-OUT will offer the user an unequalled opportunity to solve its refuse-removal problem — and at a considerable saving.

SPECIFICATIONS



BODY

1. 20 and 25 cubic yard capacity.
2. Sides and top are made of 11 gauge steel. Bottom is 1/4" thick steel.
3. Sides, front and rear reinforced with electrically welded box-sections.
4. Contents of body sealed off from outside during compaction period.
5. Steps and grab handles both sides of tailgate.
6. Buzzer system provided at rear to enable loaders to signal driver.
7. Load is pushed out by simple, easily maintained double acting cylinder.

FINISH

Baked-on enamel finish.

TAILGATE

1. 2 cubic yard hopper capacity.
2. Entirely constructed of CORTEN or equal alloy steel.
3. Packer and carrier plates constructed of 3/16" thick CORTEN steel.
4. Opens wide and stays clear of unloaded refuse when driving from unloading area.
5. Dual door can be operated automatically.
6. Single lever control.

DIMENSIONS

Capacity	AF	B	CA*	I	A	L	M	R	Loading Height	Net Weight	Hopper Capacity	D	G	H
25 YD.	19 3/4"	270"	169 3/4"	99 3/4"	96"	74"	96"	80"	5" Below Frame	Approx. 12,900	2 YD.	16"	82"	56"
20 YD.	19 3/4"	249"	148 3/4"	99 3/4"	96"	74"	96"	80"	5" Below Frame	Approx. 12,600	2 YD.	16"	82"	56"

NOTE: Truck selected must be capable of carrying net weight of body plus weight of refuse to be collected. Tandem rear axle chassis are required. Specifications subject to change without notice. *CA dimension is to C/L of rearmost wheel.

elgin

ELGIN LEACH CORPORATION

leach

SANITATION HEADQUARTERS
222 West Adams Street • Chicago 6, Illinois