

**pack** bigger loads  
**at** less cost  
**with** greater safety



the **new** Leach Packmaster



# Packmaster

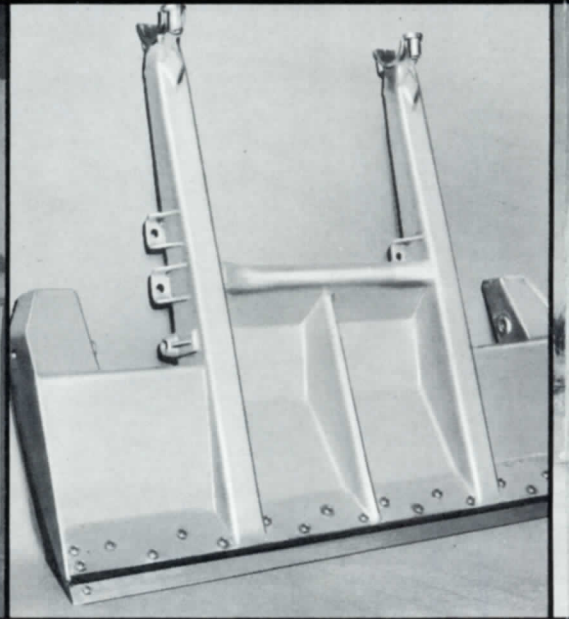
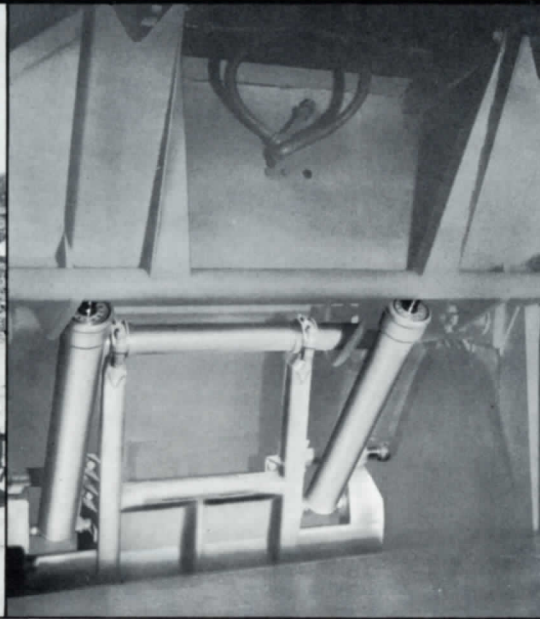
has  
developed ways  
to cut your  
refuse collection costs



When mounted on a truck such as shown, PACKMASTER loading height is only 31 inches from the ground.

has  
developed  
greater safety  
for your men

These improvements make Packmaster the safest and most economical

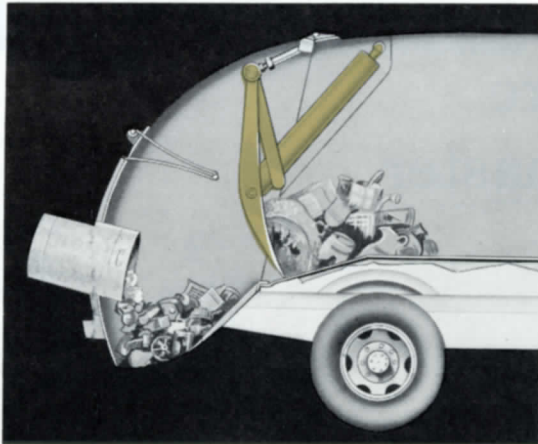
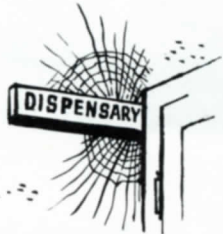


increases size by 66 $\frac{3}{4}$ %. It means your workmen can substantially cut the number of packing cycles required each day, speeding up your whole collection operation. Three packing cycles will now do the job that used to require five. PACKMASTER is the only unit large enough to allow a 55 gal. drum to be up-ended inside the hopper to avoid spillage.

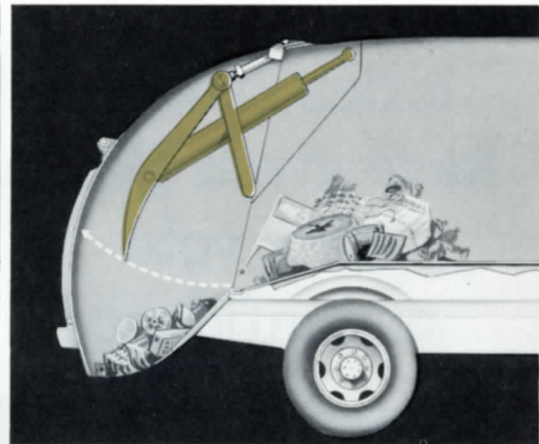
pull packing blade home with power and pressure that enables the PACKMASTER to compact more refuse per cubic yard than any other collection unit. Cylinders grip right down on the blade itself, instead of the superstructure, to apply tremendous pressure where it counts the most... at the point of compaction.

has a dual function. It compacts... and it holds the load so refuse cannot fall back into the hopper. The precision-like fit of the packer plate and body floor plate eliminates time-consuming and costly refuse jamming. Strong hi-tensile steel construction means no warping, fewer blade repairs.

**The PACKMASTER is manufactured by Leach Company, Oshkosh, Wis**



When the PACKMASTER's spacious loading hopper is full, the operator simply trips a handy lever. From this point the packing operation is completely automatic. There's no time lost by complicated lever manipulation.



The rear door rolls down, sealing off the loading hopper and protecting operators... more evidence that PACKMASTER will not take chances with the safety of your men. The packing plate starts its movement back over the hopper load, but only after the rear door is firmly in position.

al unit you can buy



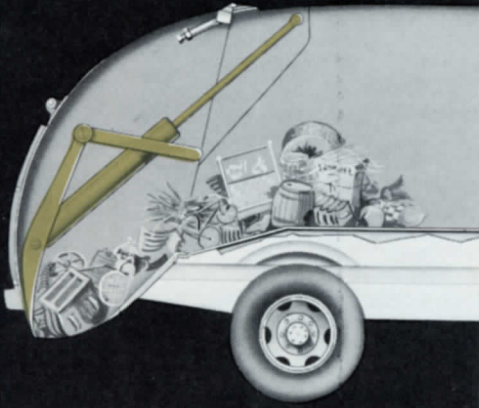
There's no selective loading with the PACKMASTER, and here is an example of how it will crush a heavy 55 gallon oil drum. If an object will fit into the large, roomy hopper, or through the special side door recommended for heavy, bulky objects, your men can pick it up and eliminate another eyesore for the community. *Ashes, chairs, crates, metal cans... yes, almost anything.*



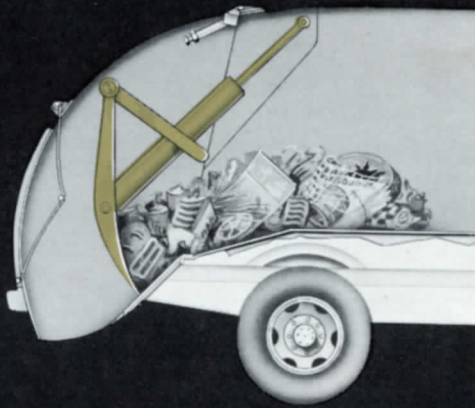
is 4½-inches below truck chassis frame to make loading easier and faster. Your workmen do not have to lift heavy loads as high and you keep them fresher and happier on the job. But most important, you are reducing possibilities of hernia and other serious muscular injuries. See in photo at right how PACKMASTER packing power has completely crushed the 55 gallon drum shown above.

consin

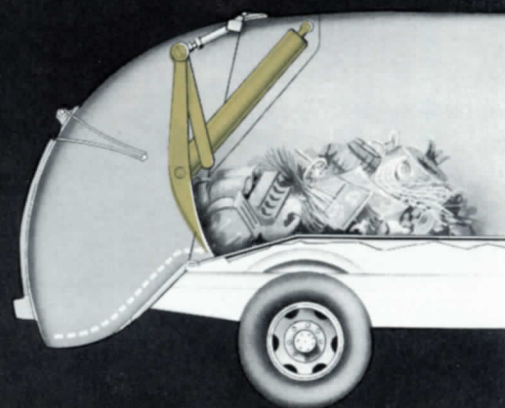
# BIGGER LOADS



Operated by powerful double acting hydraulic cylinders, the packing plate moves down behind the hopper load.



Next, the packing plate scoops underneath the load and packs it into the body with "direct power" action. As the packing plate drives the hopper load forward, the door re-opens, folding inward and away from the operator.



Notice the forward movement of the packing plate after it reaches the edge of the hopper. Refuse is actually carried right into the body a full 12 inches. This insures an evenly compacted load throughout with no open spaces to dissipate your load capacity. With the packing plate holding the body load, the hopper is now ready for refill. No refuse can drop back into the hopper because of the precision-like fit between the packing plate and the body floor plate.

## Packmaster



**SEALED OFF LOADING**—A special door completely seals off the PACKMASTER body before the packing cycle begins. The door slides directly into position . . . does not swing out from the hopper over the heads of workmen. This cuts down the possibility of injury to your loaders. The packing cycle is completely automatic. The operator simply trips the handy lever.

**PROTECTED RIDING PLATFORMS**—There's no dangerous hanging on to the body for workmen when they ride the PACKMASTER. Your loaders are protected with a specially recessed riding platform, a protecting vertical guard rail at back, plus a sturdy steel hand grip. Heavy traffic and narrow alleys offer little hazard to your men when riding the PACKMASTER.

### PARTS WEAR HELD TO MINIMUM

Considering its function and tremendous power, PACKMASTER has a minimum of mechanical parts that can quickly wear out and sky-rocket maintenance costs. PACKMASTER's simplicity in engineering and design makes it easy for the average maintenance man when repairs are necessary. Because there are fewer packing cycles . . . fewer things to go wrong . . . you actually save on parts wear.



# TESTS PROVE:

**YARD FOR YARD  
THE PACKMASTER  
WILL OUT-PACK  
ANY OTHER COLLECTION UNIT**



Yes, dozens of field tests in cities all over America prove that you can get up to 25% greater packed poundage with the PACKMASTER. Recent independent tests comparing many loads show that no other packer type refuse unit can come up to PACKMASTER efficiency. This means that it is possible for you to eliminate as many as one out of every four trips to the disposal point with PACKMASTER.

**TOUGH ON REFUSE BUT EASY ON YOUR BUDGET**

*Here's how PACKMASTER packing power gives your budget a lift*

FEWER TRIPS TO THE DISPOSAL AREA ...  
FEWER UNITS NECESSARY



YOU SAVE ON GAS AND TIRES



GREATER EFFICIENCY MEANS BETTER DISTRIBUTION OF MAN POWER





Quincy, Massachusetts

cities everywhere  
 have given Packmaster  
 their vote  
 of confidence

Sacramento, California



Toledo, Ohio



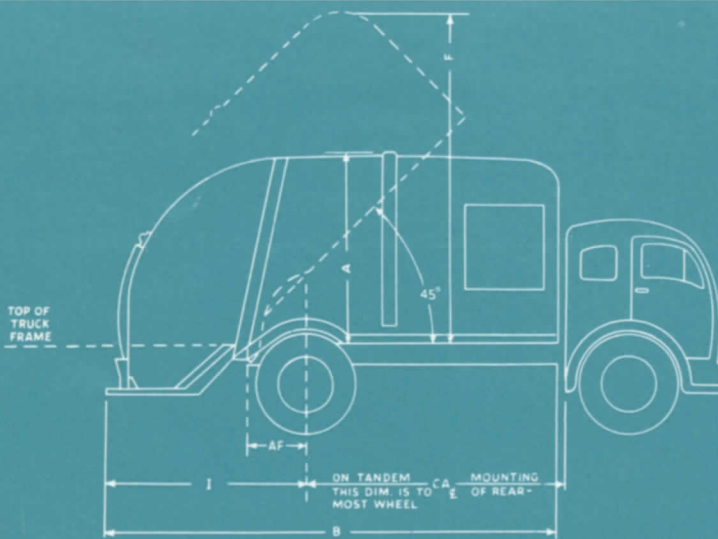
Savannah, Georgia



**WHY?** Because PACKMASTER has what it takes to do the job better. Economywise . . . safetywise . . . qualitywise . . . there is no finer refuse collection equipment.



**LARGE OR SMALL THERE'S A RIGHT SIZE PACKMASTER FOR YOUR COMMUNITY**



Capacity	AF	B	CA	I	A	F	Loading Height	Hopper Capacity
10 yd.	30 1/2	146 1/2	84	65 1/2	79	120	7 1/2" above frame	3/4 yd.
13 yd.	31 7/8	189	102	87	82	138	4 1/2" below frame	1 1/4 yd.
16 yd.	31 7/8	203	116	87	84	149	4 1/2" below frame	1 1/4 yd.
20 yd.	31 7/8	243	156	87	84	178	4 1/2" below frame	1 1/4 yd.



10 cu. yd.    13 cu. yd.    16 cu. yd.    20 cu. yd.

*the* **elgin** Corporation

Sanitation Headquarters  
 231 South La Salle Street  
 Chicago 4, Illinois

1955