

LEACH

S-III

SPECIFICATIONS

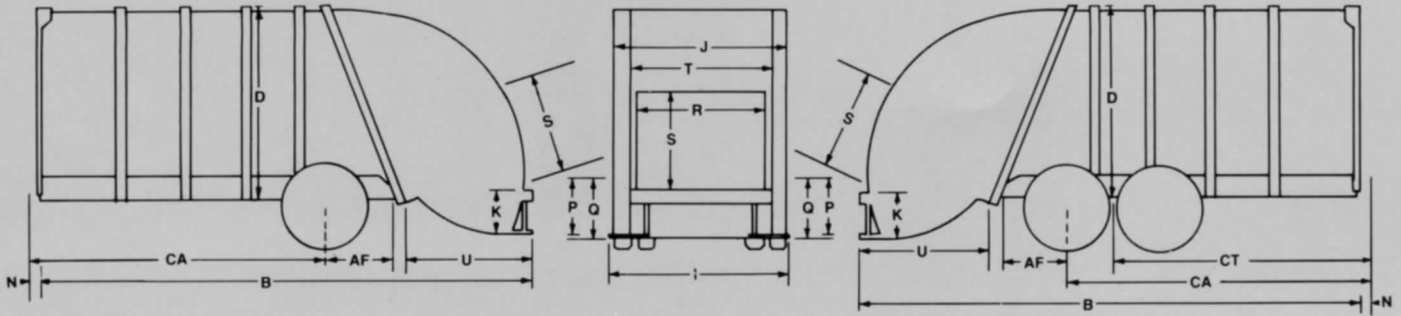


The New Standard of Leadership in Quality

- Takes virtually all types of refuse
- Exclusive single stage push-out design
- Meets all ANSI safety standards
- Single lever packer plate control
- Open front end for easy maintenance
- Available in 13, 16, 18, 20 and 25 cubic yard capacities
- Single lever push-out control
- Leach built — Leach reliability
- Leach exclusive baked on enamel finish
- Clean push-out plate design
- Built better to last longer

LEACH
GUARANTEED QUALITY

America's most efficient refuse collection systems



	Single Axle								Tandem Axle			
BODY DIMENSIONS	13 yd	16 yd	18 yd	20 yd	10m ³	12m ³	13m ³	15m ³	20 yd	25 yd	15m ³	19m ³
AF After Frame	35"	35"	35"	35"	915 mm	915 mm	915 mm	915 mm	24"	24"	609mm	609mm
B Overall Length	169"	191"	204"	217"	4293mm	4851mm	5181mm	5112mm	217"	254"	5112mm	6452mm
CA To Centerline of Rear Axle	87"	110"	123"	136"	2210mm	2794mm	3125mm	3456mm	147"	184"	3733mm	4674mm
CT To Centerline of Trunion (50" Beam)									122"	159"	3099mm	4039mm
D Height above chassis frame (with 2½" Sill)	93"	93"	93"	93"	2362mm	2362mm	2362mm	2362mm	93"	93"	2362mm	2362mm
I Body—Outside width	96"	96"	96"	96"	2439mm	2439mm	2439mm	2439mm	96"	96"	2439mm	2439mm
J Body—Inside width	91"	91"	91"	91"	2312mm	2312mm	2312mm	2312mm	91"	91"	2312mm	2312mm
K Hopper depth	15"	15"	15"	15"	381mm	381mm	381mm	381mm	15"	15"	381mm	381mm
N Interference point above chassis frame	5"	5"	5"	5"	127mm	127mm	127mm	127mm	5"	5"	127mm	127mm
P Top of Step below Chassis Frame	17"	17"	17"	17"	432mm	432mm	432mm	432mm	17"	17"	432mm	432mm
Q Hopper bottom below Chassis Frame	20"	20"	20"	20"	508mm	508mm	508mm	508mm	20"	20"	508mm	508mm
R Hopper opening width	71"	71"	71"	71"	1803mm	1803mm	1803mm	1803mm	71"	71"	1803mm	1803mm
S Hopper opening height	51"	51"	51"	51"	1295mm	1295mm	1295mm	1295mm	51"	51"	1295mm	1295mm
T Hopper inside width	77"	77"	77"	77"	1956mm	1956mm	1956mm	1956mm	77"	77"	1956mm	1956mm
U Rear of Body to rear of tailgate—closed	46"	46"	46"	46"	1168mm	1168mm	1168mm	1168mm	46"	46"	1168mm	1168mm
■ Height above chassis frame—tailgate raised	148"	148"	148"	148"	3759mm	3759mm	3759mm	3759mm	148"	148"	3759mm	3759mm
■ Loading lip below chassis frame (with 2½" sill)	1½"	1½"	1½"	1½"	38mm	38mm	38mm	38mm	1½"	1½"	38mm	38mm
■ Center of gravity measurement from front of body												
—Body only	81"	91"	98"	110"	2057mm	2311mm	2489mm	2794mm	110"	123"	2794mm	3124mm
—Payload	65"	79"	87"	97"	1651mm	2007mm	2210mm	2464mm	97"	112"	2464mm	2845mm
■ Hopper Capacity	1.5 cu yd	1.5 cu yd	1.5 cu yd	1.5 cu yd	1.1m ³	1.1m ³	1.1m ³	1.1m ³	1.5 cu yd	1.5 cu yd	1.1m ³	1.1m ³
■ Approximate body weight	8872 lbs	9359 lbs	9571 lbs	9951 lbs	4024kg	4245kg	4341kg	4514kg	9951 lbs	10,883 lbs	4514kg	4937kg
■ Minimum Truck GVW Requirement	24,000 lbs	27,000 lbs	29,000 lbs	31,000 lbs	10,886kg	12,247kg	13,154kg	14,062kg	32,900 lbs	39,000 lbs	14,923kg	17,690kg

NOTES: *Truck selected must be capable of carrying net weight of body plus weight of refuse to be collected.

*CA Must be usable with no obstructions protruding above frame.

*Specifications subject to change without notice.

Features

- Sides, front and rear reinforced with electrically welded box sections.
- Contents of body sealed off from outside during compaction period.
- Steps and grab handles both sides of tailgate.
- Buzzer system provided both sides at rear to enable loaders to signal driver.
- Load is pushed out by simple, easily maintained, double-acting cylinder.
- Single lever packer control at rear of hopper... curbside.
- Single lever ejection control at front of body... street side.
- Single lever tailgate lift control at front of body... street side.
- Leach exclusive baked-on enamel finish. White standard. Other colors optional. (Other colors may affect visibility)
- Meets all ANSI Safety Standards.

Hydraulic System

- **Cylinders**
 - (2) 5" double-acting packer plate cylinders
 - (1) 5" single-acting holding cylinder
 - (1) 4" double-acting ejection cylinder (13, 16, 18, 20 yd.)
 - (1) 5" double-acting ejection cylinder (25 yd.)
 - (1) 4" single-acting clamping cylinder
 - (2) 4" single-acting tailgate lift cylinders
- **Pump**
 - Leach—spur gear type
 - Capacity—42 GPM @ 1200 RPM
 - Maximum operating pressure—1650 PSI
- **Hydraulic Tank**
 - Capacity—35.5 gallons
 - Location—Right hand front on floor inside body
 - Filters—141 micron in-line suction strainer with by-pass valve
 - 20 micron return line filter with by pass valve
 - Sight gauge—located on front of tank at eye level

Body Construction

- Sides—11 gauge, Hi-Tensile
- Top—11 gauge Hi-Tensile
- Floor—11 gauge Hi-Tensile
- Floor trough—¼" 80,000 PSI

Tailgate Construction

- Hopper sides—11 gauge 50,000 PSI
- Hopper bottom—¾" 50,000 PSI
- Packer plate—¼" 36,000 PSI

Optional Equipment

- Chain container attachment
- Hydraulic container attachment
- 8,000 lb. overhead winch
- 12,000 lb. overhead winch
- 12,000 lb. container lifting cylinder

You get more into it because we put more into it.

LEACH

Pacesetter in Sanitation

Leach Company
2737 Harrison Street ■ P.O. Box 2608
Oshkosh, WI 54903 ■ 414/231-2770
FAX: 414/231-4571

International Distribution:
EL Industries International, Inc.
P.O. Box 645 ■ Barrington, IL 60011, U.S.A.
Telephone 708/382-0004 ■ FAX 708/382-0053