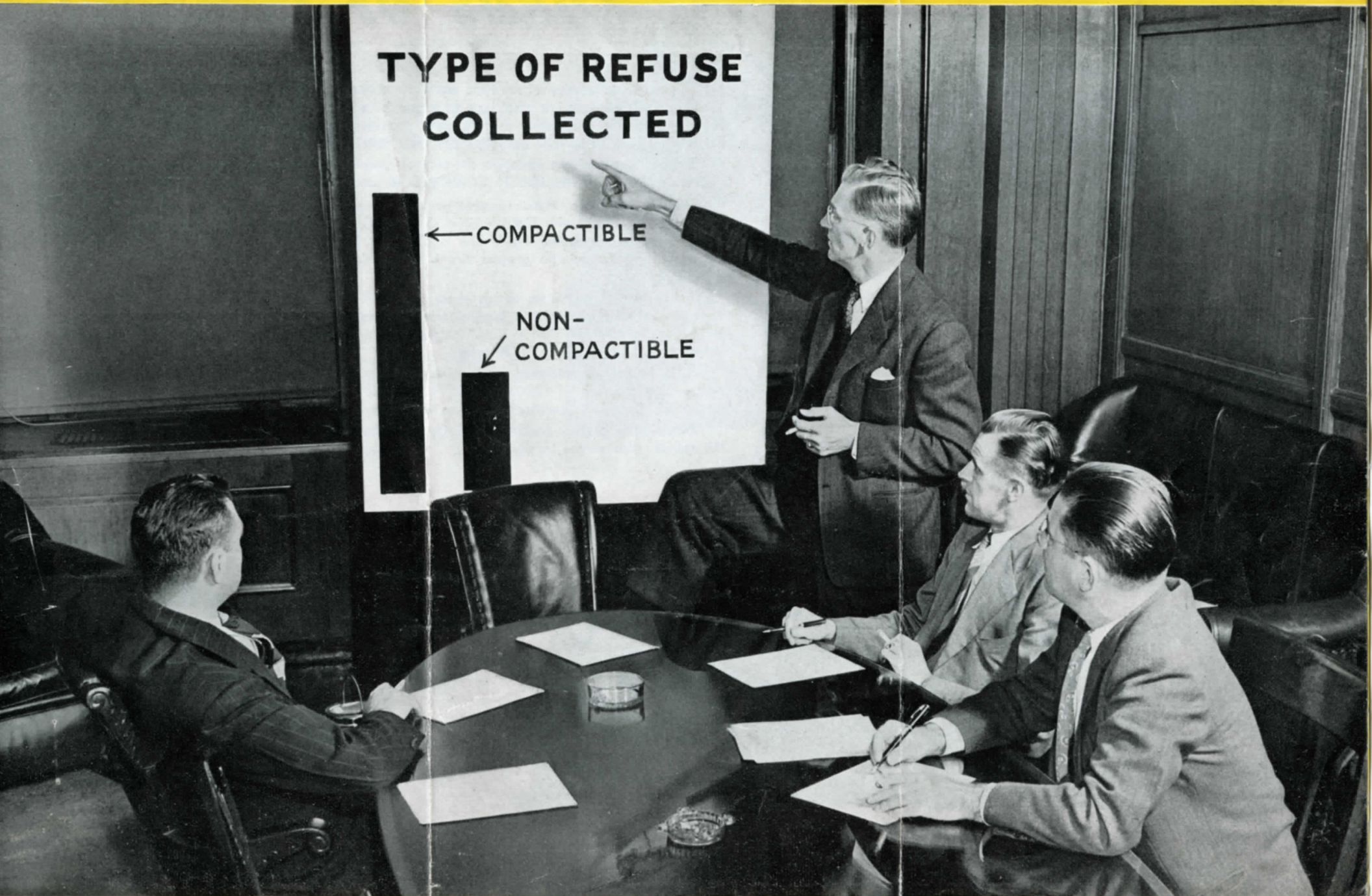
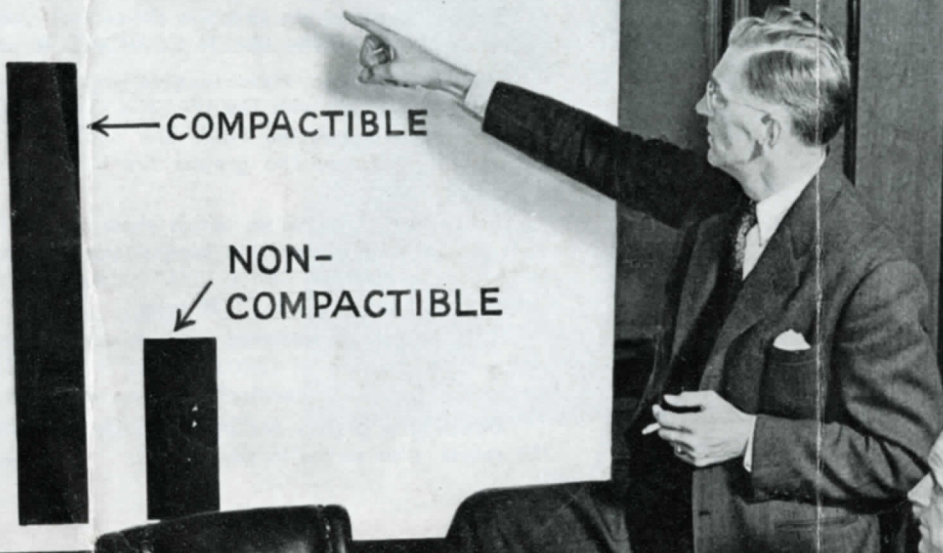


Said the Commissioner:

"What We Need, Gentlemen, is *The* LEACH COMPACTOR"

**TYPE OF REFUSE
COLLECTED**





BIGGER LOADS OF COMPACTIB

In your consideration of the type of refuse collection unit to adopt, it's of vital importance to determine definitely just what type of refuse is to be collected. Whether or not your refuse is compactible is a question that assumes considerable importance in coming to a decision as to what type of LEACH collection unit best suits your needs.

If your study of the situation shows that you are called on to collect a large amount of compactible refuse, The LEACH COMPACTOR merits your careful consideration.

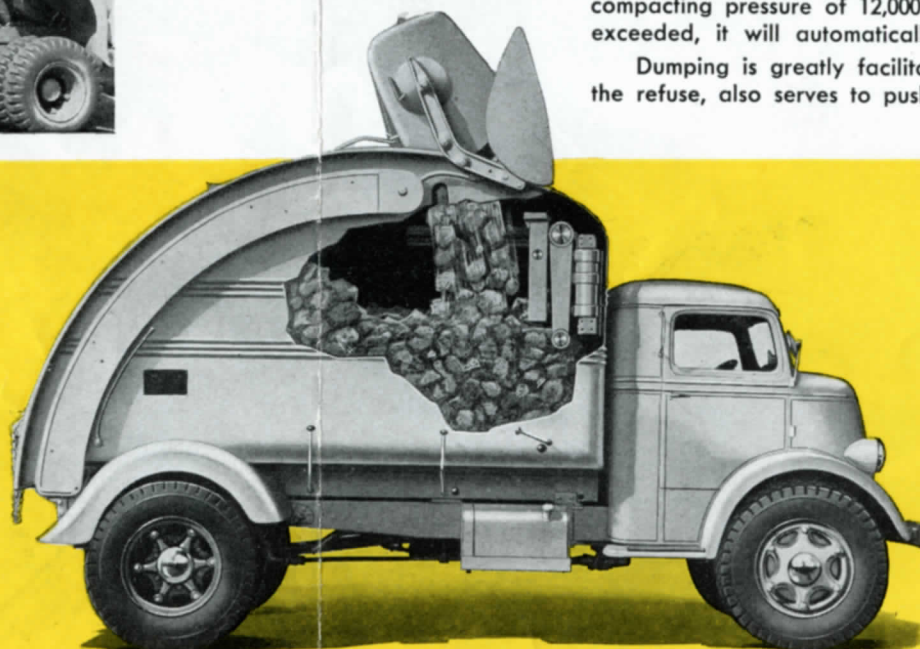
With compactible refuse, such as wrapped garbage or rubbish, you'll find that you can get far larger loads with The LEACH COMPACTOR. For, with this unit, much larger amounts of refuse are compacted inside the body, thus cutting down the number of trips to the incinerator or dump. The greater the load, obviously, the fewer the number of trips for dumping.

Below are three views which show the method by which The LEACH COMPACTOR operates to take aboard the biggest possible load. The LEACH COMPACTOR is operated by hydraulic cylinder with a 20½" stroke, placed between the two upright shafts, to which are attached the COMPACTOR arms.

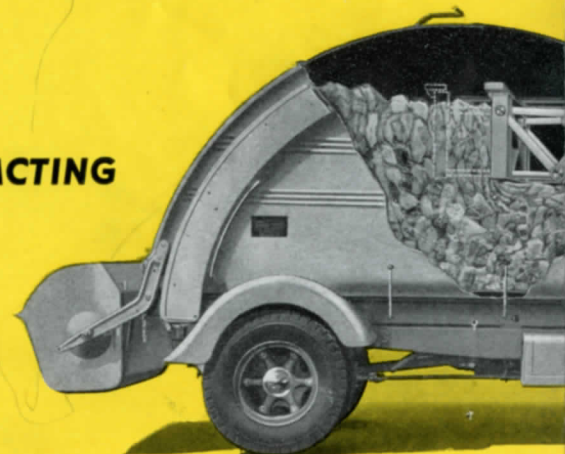
It is heavily constructed and reinforced throughout with heavy steel bars. With a compacting pressure of 12,000 pounds, it is so designed that if, at any time, this pressure is exceeded, it will automatically reverse and return to loading position.

Dumping is greatly facilitated, as illustrated below, for the same device that compacts the refuse, also serves to push it out.

LOADING



COMPACTING



THE LEACH COMPACTOR • PACKS

LE REFUSE

If your studies show that the collection consists largely of non-compactable refuse — for example, ashes or wet, unwrapped garbage — The LEACH REFUSE-GETTER, which employs no compacting device, is available.

The LEACH COMPACTOR is available in two sizes to meet varying conditions in different localities. Below, you'll find data on both models.

MASTER

Capacity—8½ cubic yards.

Net Weight—6320 lbs.

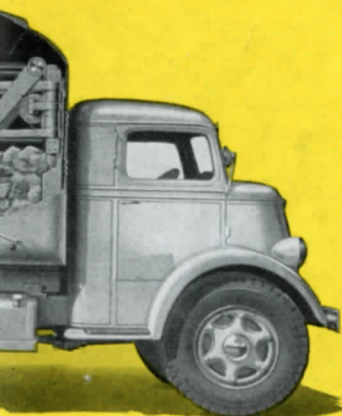
Truck Requirements—At least 71½" from back of cab to center line rear axle.

CHIEF

Capacity—13 cubic yards.

Net Weight—8445 lbs.

Truck Requirements—At least 102" from back of cab to center line rear axle.

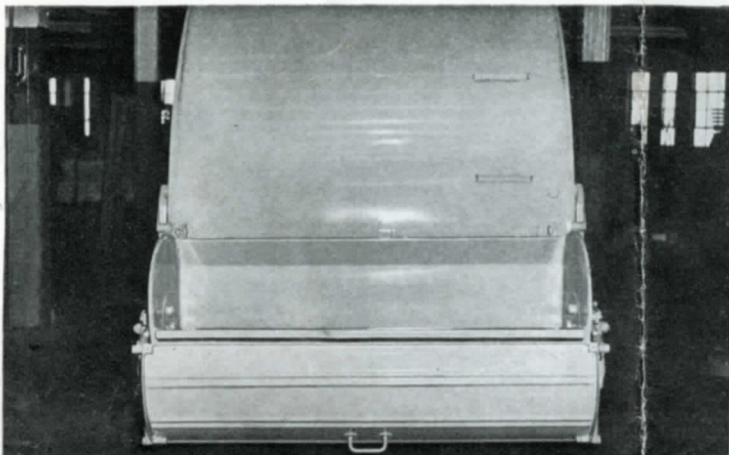


DUMPING



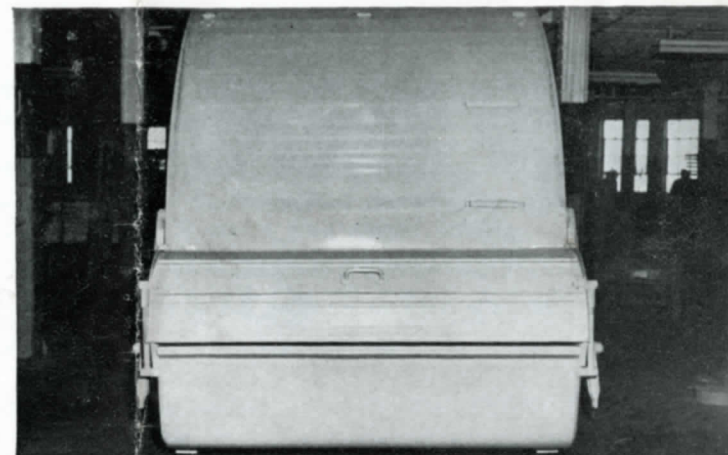
REFUSE IN • THEN PUSHES IT OUT

AVAILABLE AS A SPECIAL EQUIPMENT THE LEACH BUCKET COVER



As special equipment, available if you find it desirable, there's The LEACH Bucket Cover, illustrated on this page.

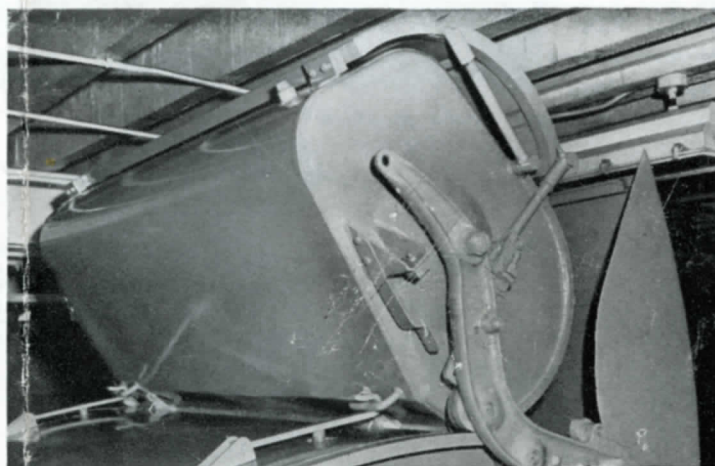
While the workman is loading the bucket, at about the level of his hips, the cover is carried at the rear of the bucket, safely out of his way. Here it cannot interfere with his actions while loading.



Constructed of aluminum, the bucket cover is so light that your workman can easily lift it with one hand. When the bucket is filled to capacity, he simply slides the cover to the top of the bucket, thus effectively covering the contents.

Then, a pull of the lever at the curb side of the unit and the bucket travels to the top, dumps into the body, returns to loading position automatically. As the bucket dumps into the body, the cover moves back to its original position automatically.

With the bucket cover, all chance of the material spilling as the bucket makes its upward trip is eliminated, thus assuring the thoroughly sanitary type of collection that characterizes The LEACH COMPACTOR throughout.



With its low loading height, automatic loading method, attractive appearance, ability to assure top capacity loads of compactible material, The LEACH COMPACTOR provides you with a type of service to be envied and admired by all.

Years ago, almost any vehicle was considered satisfactory for refuse collection. Backed by 60 years of manufacturing experience, one-fourth of which have been in the production of units for refuse collection, Leach Company declined to accept that viewpoint, sought a sanitary, economical method.

That's exactly what The LEACH COMPACTOR offers to progressive municipalities—a unit carefully engineered for a special job—that of collecting compactible refuse.

That municipalities are rapidly becoming aware of the many advantages of equipment of this type is evidenced by the steady growth in popularity which this unit has experienced.

LEACH COMPANY

ESTABLISHED
1887

OSHKOSH, WISCONSIN

Marketed by THE ELGIN CORPORATION

501 FIFTH AVENUE, NEW YORK 17, N. Y.



100 NO. LA SALLE ST., CHICAGO, ILL.

1064624

Printed in the U.S.A.