

For the Best
IN REFUSE COLLECTION SERVICE



MODERNIZE WITH *The* LEACH REFUSE-GETTER

MODERN CONDITIONS DEMAND

The day when any available vehicle was considered good enough for the job of refuse collection has long since passed. Today's discriminating tastes demand strictly high-class service in the collection of refuse, just as in all other fields of service.

The LEACH REFUSE-GETTER meets this demand squarely, offers a unit that has distinct "eye-appeal," one that calls forth favorable comments wherever it's seen. Engineered with painstaking care, it provides not only an attractive appearance, but distinct operating advantages as well.

As for appearance, it takes but a moment's reflection to picture the ordinary refuse collection vehicle—generally an unattractive unit, with high loading facilities, all too often an open truck or wagon. Contrast this with the photographs of The LEACH REFUSE-GETTER appearing on these pages. There's real "eye-appeal" for you!

Then, its operating advantages command attention. With The LEACH REFUSE-GETTER, the workmen load into the bucket at the rear at about hip level, rather than shoulder high, or even higher. Greater efficiency results with less fatigue for the workmen, and hernia claims are bound to be fewer. Low loading height makes possible very definite operating economies.

With the bucket loaded, the rest is simple. The workman simply pulls a lever at the curb side of the unit, the bucket travels to the top, empties its contents, returns to loading position in a jiffy. All the workman does is pull that lever once. Its automatic loading method is especially popular, results in speeding up collections.

With its fully streamlined appearance and definite operating advantages, The LEACH REFUSE-GETTER has enjoyed a steadily increasing degree of popularity among municipalities everywhere.



HIGH CLASS SERVICE



Along its route, the contents are carried in the permanently closed body, safely screened from the gaze of passersby and from the shifting breezes. Once the bucket has deposited its contents inside the body, no passerby is ever offended by the unsightly appearance of a load of refuse, never is he subjected to the unsavory odors that can be given off by open trucks on a summer day.

Neither can papers or other light material be blown along the route to leave an unpleasant reminder that the collection vehicle has made its rounds.

At the incinerator or dump, unloading is simple and effective, as will be observed by the illustration at the right, below.

For non-compactible refuse, The LEACH REFUSE-GETTER provides a class of service of the highest order. If your collection consists of compactible material, The LEACH COMPACTOR is available to give you the same high-class type of service.

Available in 2 Sizes

MASTER

Capacity—8½ cubic yards.

Net Weight—4500 lbs.

Truck Requirements — At least 71½" from back of cab to center line rear axle.

CHIEF

Capacity—13 cubic yards.

Net Weight—5950 lbs.

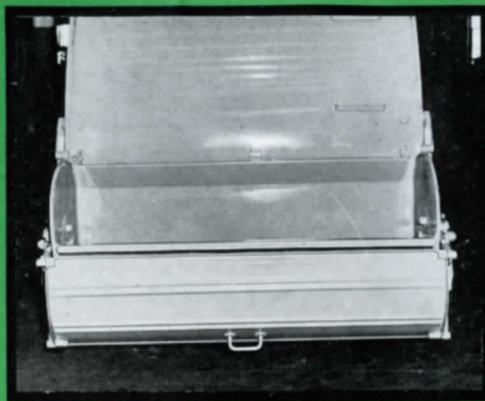
Truck Requirements—At least 102" from back of cab to center line rear axle



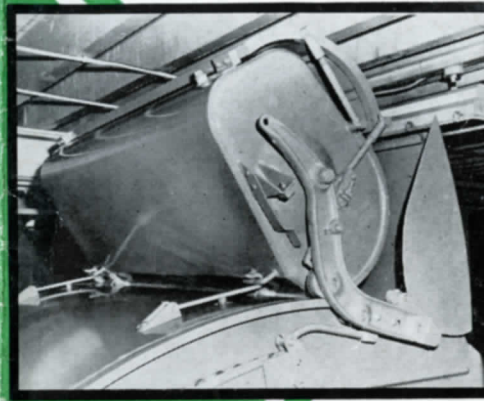
SPECIAL EQUIPMENT



As special equipment, the Bucket Cover is available to shield contents of the bucket on its upward trip. Here it is shown fully covering the bucket as it does while the bucket travels to the top.



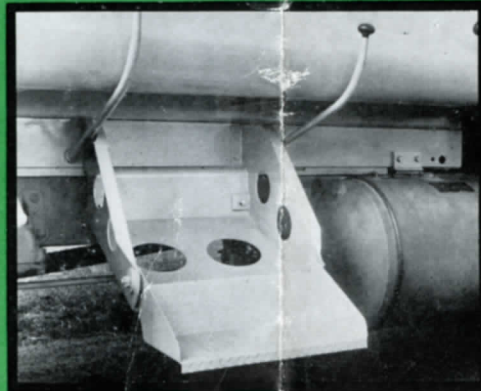
Constructed of aluminum, the Bucket Cover is easily shifted by the workman to the side where it can't interfere with his freedom of action as he dumps the contents of garbage pails into the bucket.



When it reaches the top it automatically slides to the side of the bucket again out of the way while the bucket discharges its contents into the body. The bucket returns to loading position with the cover in the same position.

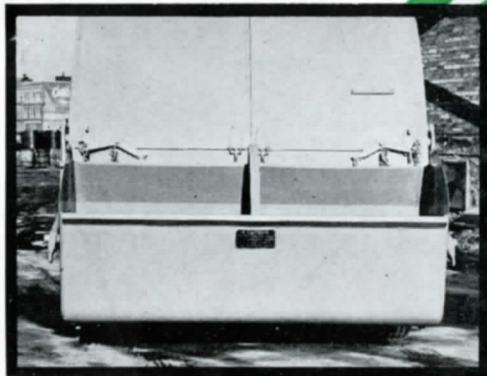


Now and then, it's advisable to have a step on the side to carry the workman from one stop to the next. Here is pictured the step that is available, when desired, together with the handle on the side of the unit.

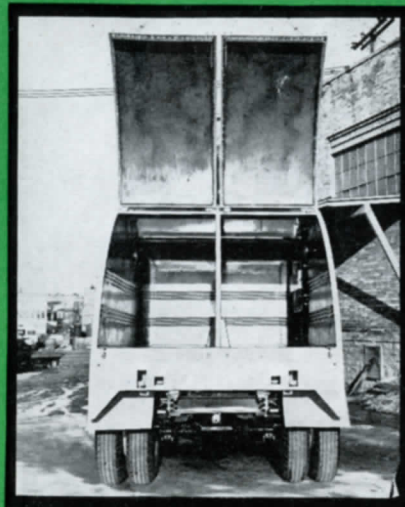


This shows a close-up view of the step, bringing out the details of its rugged construction. When not in use, it can be conveniently folded into its holding bracket out of the way of passing traffic.

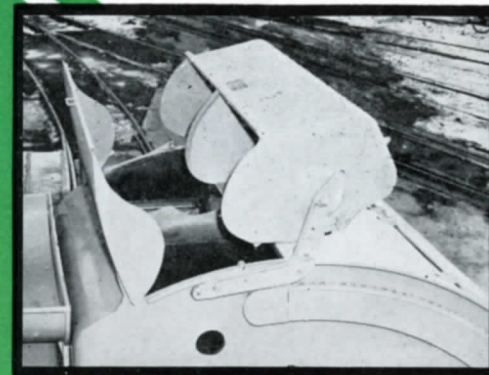
SPECIAL EQUIPMENT



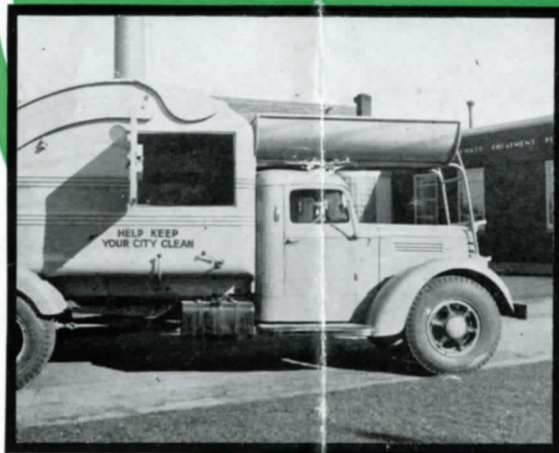
Where it is desirable to collect two types of refuse, for example, ashes and garbage, separately but on the same trip, there's available the divided unit. Above is the divided bucket — ashes on one side, garbage on the other.



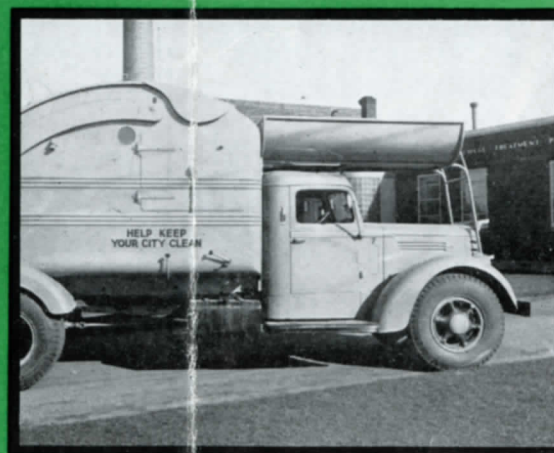
Here you see the divided body for dual collection of refuse. Note that the door is also divided into two sections, each of which can be independently operated, dumping first one side, then the other.



Here is pictured the bucket in the position of discharging its contents into the body. Over the cab, a portion of the special rubbish rack, which can be furnished as additional special equipment, is shown.



For municipalities desiring a side door for the loading of larger boxes, cartons and similar material, a door, as pictured above, can be provided. Here, you will also observe a full view of the rubbish rack.



In this view the side door, in closed position, is shown. This special side door can be supplied on the Chief only and is not available on the Master. Here again, the special rubbish rack is pictured.



The LEACH line of refuse collection equipment offers a variety of units to meet varying types of collection problems. When your problem is that of collecting non-compactible refuse — ashes or unwrapped garbage, for example — The LEACH REFUSE-GETTER should have your careful consideration.

Having devoted nearly 60 years to the business of manufacturing equipment, Leach Company has the "know-how" required in this field. During a quarter of this span of time, this company has been devoting its attention to the field of refuse collection, studying its problems, engineering the proper vehicle for the job at hand.

With two models, The LEACH REFUSE-GETTER offers the Master for municipalities where a smaller capacity unit is what is needed. Where a larger capacity is required, there's the Chief.

If your problem is that of collecting compactible refuse — for example,

trash or wrapped garbage — The LEACH COMPACTOR meets the situation better. With this unit, larger loads of compactible material can be crowded into the body, thus, cutting down the number of trips to the incinerator or dump with consequent savings.

Only a careful study of your refuse collection problem can determine which of the LEACH units best suits your particular type of collection. First, the type of material to be collected should have your thorough study. Determine whether your problem is that of collecting compactible or non-compactible material.

In many cases, of course, both types have to be collected. Then both The LEACH REFUSE-GETTER and LEACH COMPACTOR come into the picture.

In the LEACH line of equipment, there's the type of refuse collection vehicle for your particular type of collection. When you have installed it, you'll be more than pleased with your modern, up-to-the-minute equipment.

LEACH COMPANY • OSHKOSH, WISCONSIN

ESTABLISHED 1887

MERCHANDISED BY THE ELGIN CORPORATION

501 FIFTH AVENUE, NEW YORK 17, N. Y.



100 NO. LA SALLE ST., CHICAGO, ILL.

1074628

ClassicRefuseTrucks.com Library

PRINTED IN U.S.A.