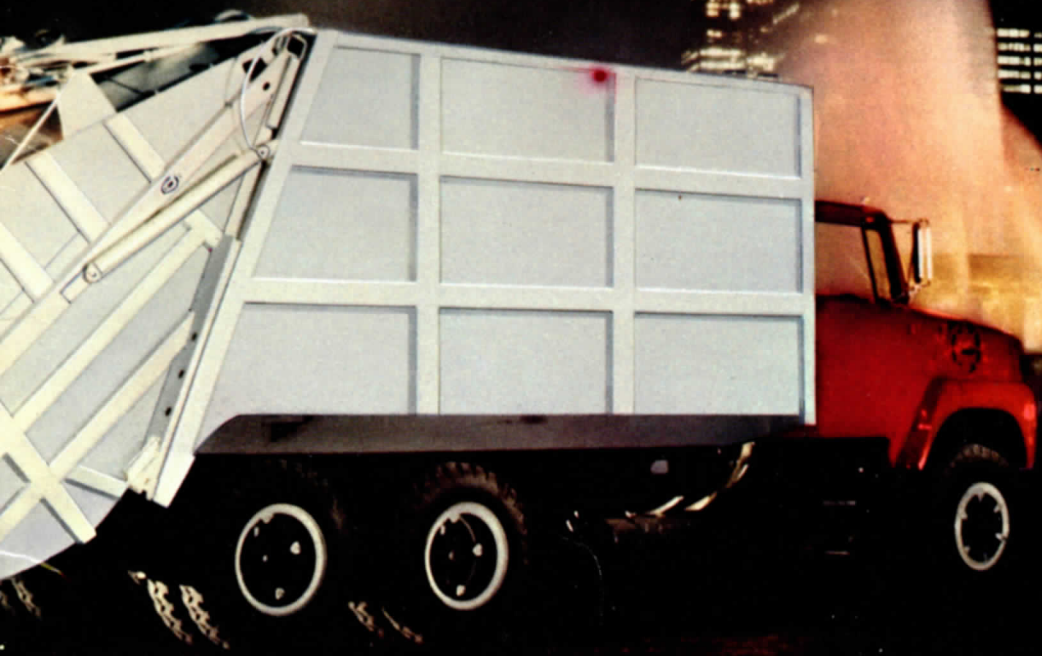


strong ... rugged  
... largest payloads



# Leach 2-R Packmaster®

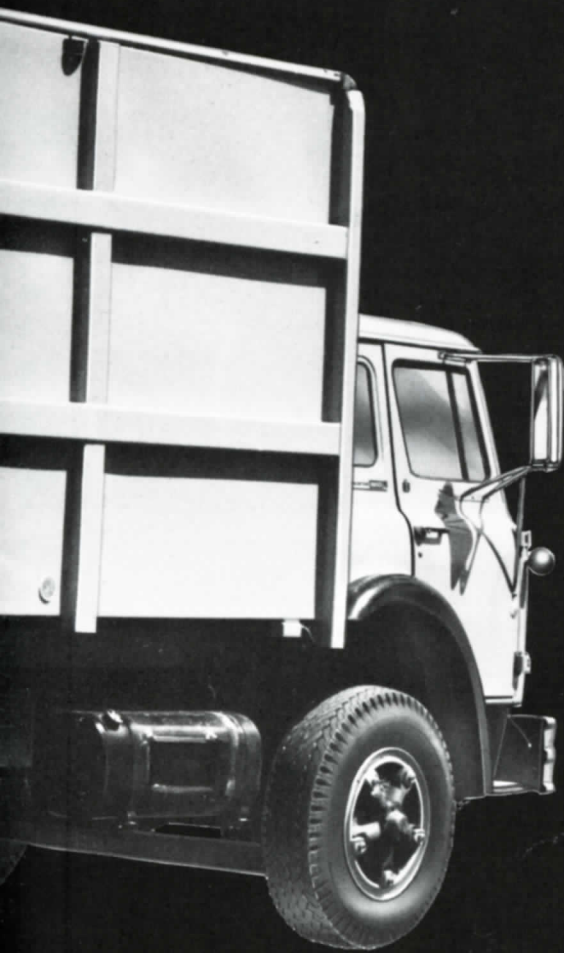
LEACH



**LEACH**  
GUARANTEED QUALITY

... America's most efficient refuse collection systems





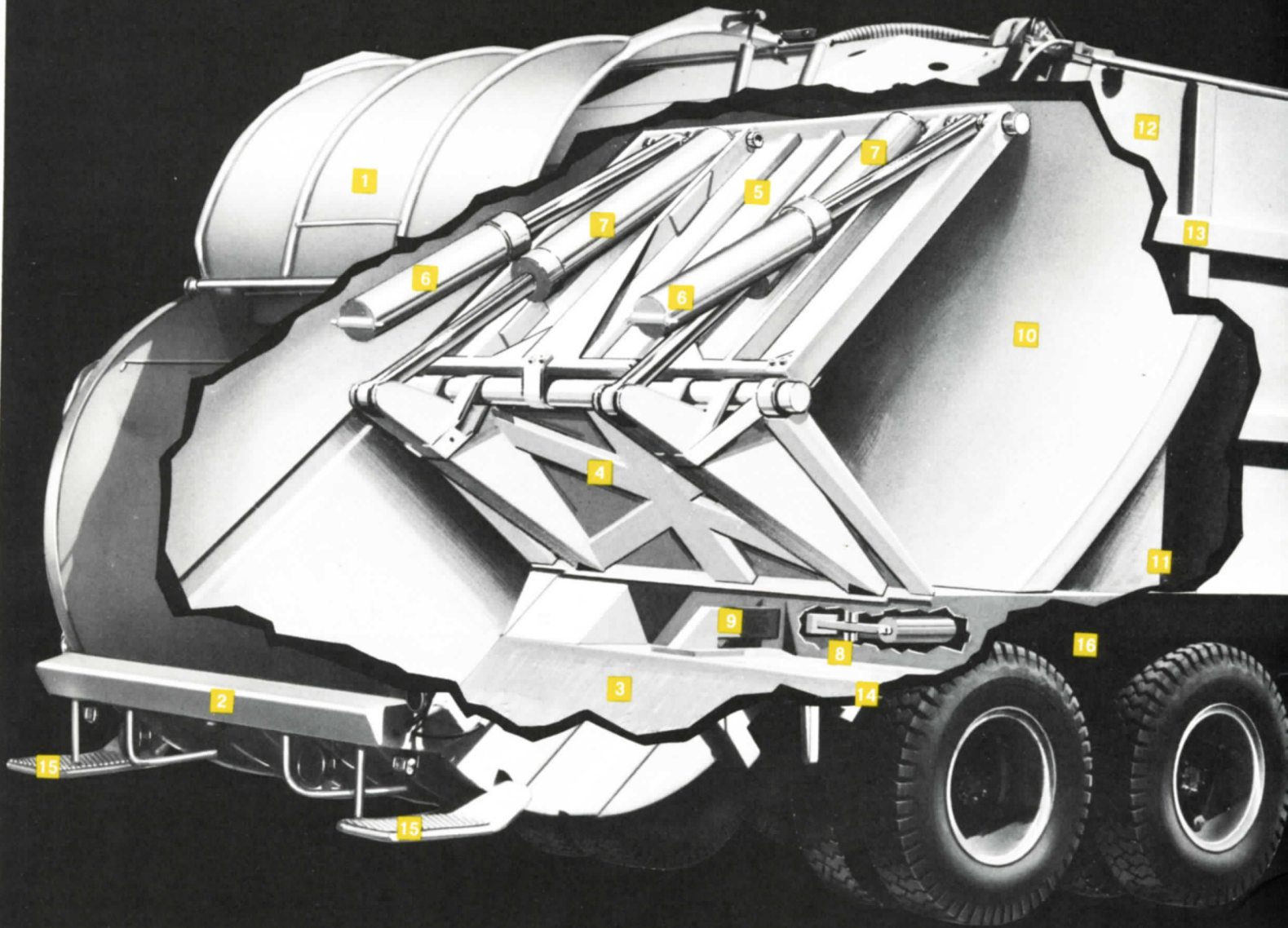
**The Leach**  
**2-R Packmaster**  
**performs!**



## Soundest concept in compaction

- 1 Hopper Door
- 2 Reinforced Steel Hopper Loading Edge
- 3 2-Cubic Yard Hopper
- 4 Rugged, Durable Packer Plate
- 5 Reinforced, Massive Carrier Plate
- 6 Heavy-Duty, Double-Acting 6" Carrier Plate Cylinders
- 7 Heavy-Duty, Double-Acting 6" Packer Plate Cylinders
- 8 Push-Out System Clamping Cylinder
- 9 Heavy-Duty Push-Out Bar
- 10 Massive, Rugged Push-Out Plate
- 11 Double-Acting 6" Push-Out Cylinder (Not shown)
- 12 Seven-Step, Baked-On Enamel Finish
- 13 Extra Strength Side Channels and Cross Members
- 14 Tailgate Clamping Turnbuckles
- 15 Non-Skid Riding Steps
- 16 Standard Truck Chassis

No other refuse  
compaction unit can  
perform the way ...



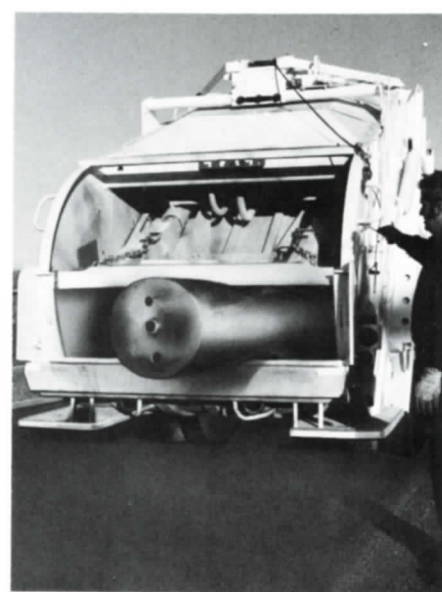


## Big Eater...it takes virtually all types of refuse



*Special note:* In the operation of any type of refuse equipment, loaders should always exercise good judgment in the lifting and placing of refuse into the unit's hopper and actuating packing lever.

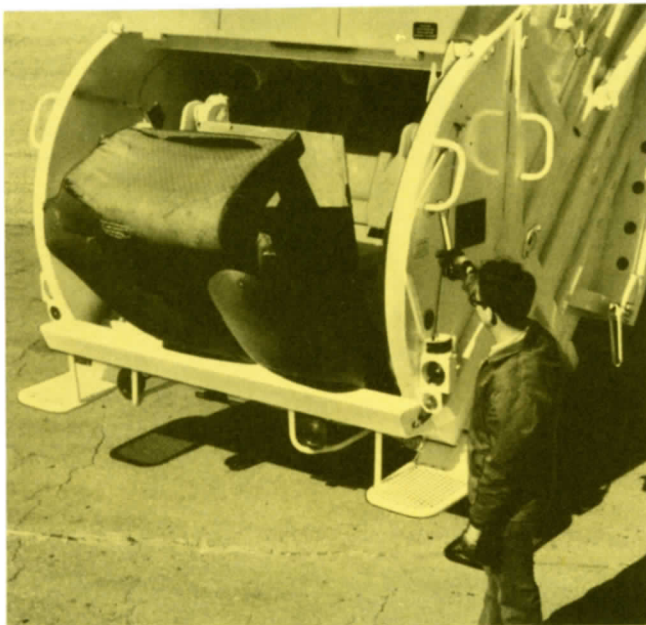
The 2-R Packmaster's huge 2 cubic-yard hopper, with its convenient low loading height, is capable of uncommonly effective performance. Its breaking, crushing, and smashing power is unrivaled anywhere. Such refuse as boxes, wooden crates, oil drums, chairs, sofas, mattresses, stoves, water heaters, refrigerators, tree limbs, branches... you name it... are reduced to small, compact dimensions. The 2-R picks up everything the very first time around. No separate collections are required. Intermixing of household refuse with commercial and container pick ups, all on ONE route, are commonplace practices with the 2-R.





# 2-R PACKMASTER

## One Lever Control



**For Packing**—The packing cycle is activated by a single lever. New personnel can be easily trained in minutes.



**Push-Out of Load**—Easy to reach, easy to operate. One lever raises tailgate. One lever controls the massive Push-Out blade for discharging load, quickly and cleanly.



**Hopper Door**—A highly desirable feature designed to seal off hopper during the packing operation is controlled by an easy-to-manipulate lever that lowers the door and starts the packing cycle.



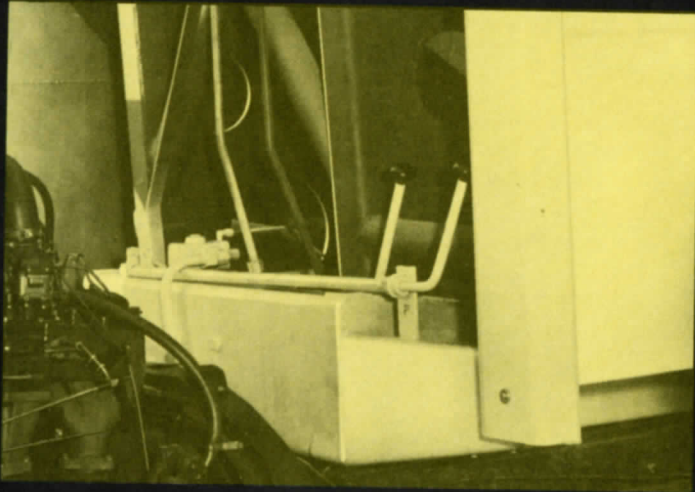
## Sleek Functional Design

Inside and out the 2-R Packmaster is designed to do the job. With fewer moving parts, strong and durable construction, modern and practical styling... it is a unit that is ideally suited for every collection assignment.

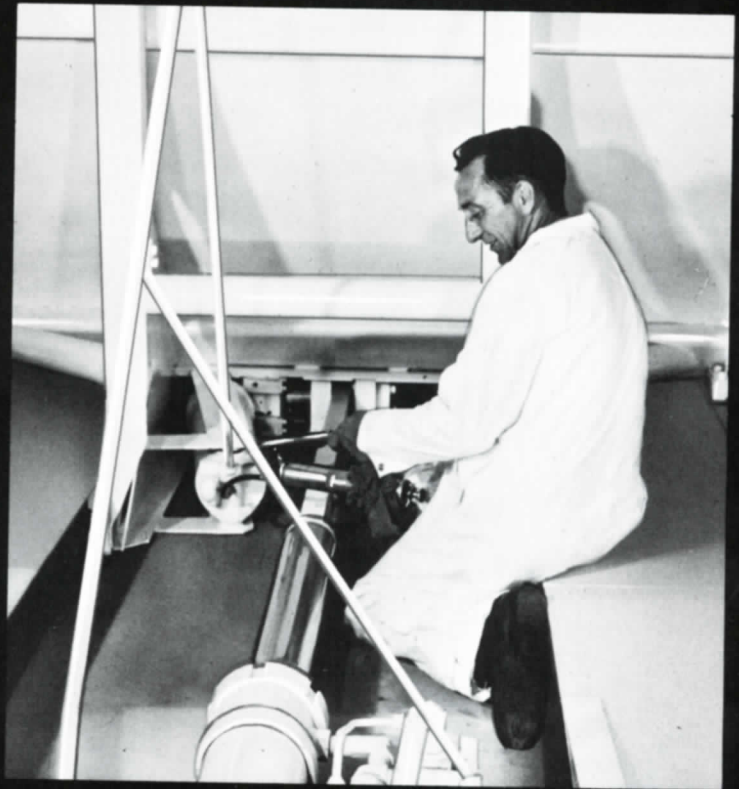
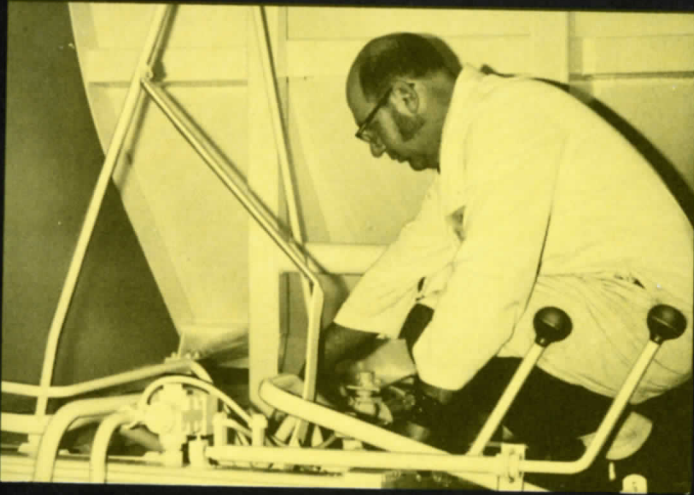




# Designed for lower maintenance costs . . . easier accessibility



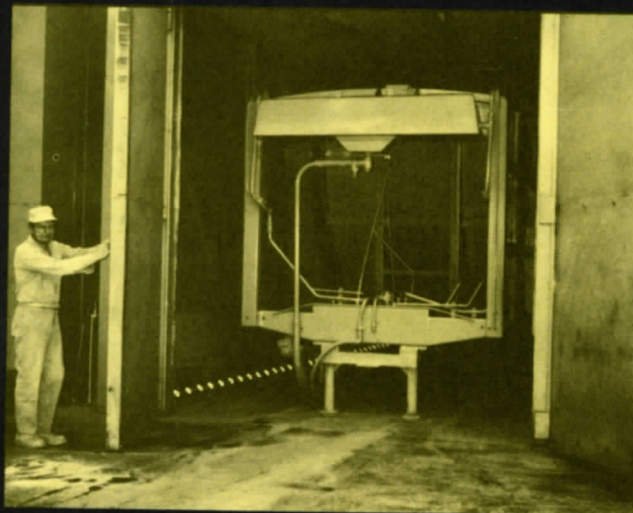
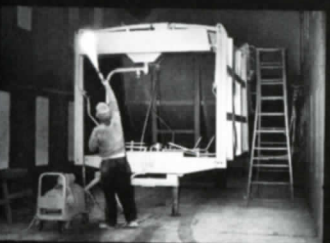
Open front end . . . another exclusive Leach feature. No side door required for service.



Full accessibility for servicing, back side of Push-Out Plate.

Another popular feature of the 2-R is its lower maintenance cost factor. Simple, uncomplicated design . . . a built-in ruggedness that resists abuse . . . easy accessibility for servicing . . . these are three specific benefits that owners of 2-R's mention when they specify this unit.

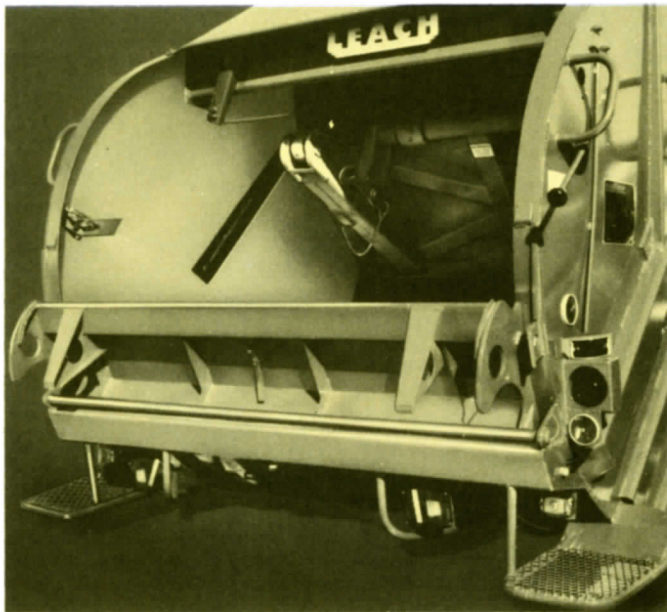
## Exclusive 7-Step baked-on enamel finish



No other unit in the industry receives a more durable finish than the Leach 2-R Packmaster and here are seven reasons why:

1. Each 2-R is thoroughly shot-blasted providing a solid grip base for the paint finishes to follow.
2. All "burrs" and rough spots are ground off.
3. Surface is then coated with a rust-inhibiting primer.
4. For added protection, another primer of zinc chromate is applied.
5. A high-gloss enamel is sprayed on.
6. A second coat of high-gloss enamel is applied.
7. Enamel finish is baked in an oven at a temperature of 250° Fahrenheit for a hard, long lasting, durable finish.

## Fully containerized ... for all types of refuse routes.



Leach Container Attachment ... for 1, 1½ or 2 yard containers.

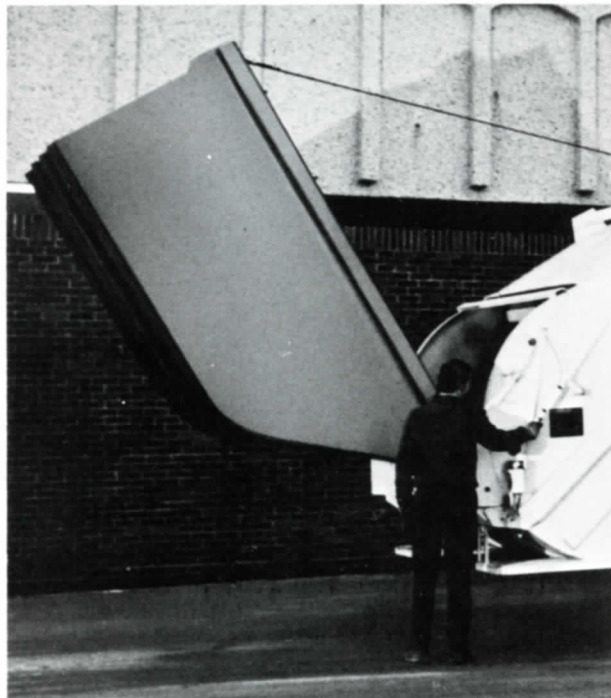
By utilizing the Leach container attachment or the Leach winch-type hoist, the 2-R Packmaster becomes fully adaptable to all types of commercial or residential routes.



Simple, easy hook up of container.



Leach Overhead Winch-Hoist ... accommodates containers up to 10 cubic yards ... for the big volume stops.





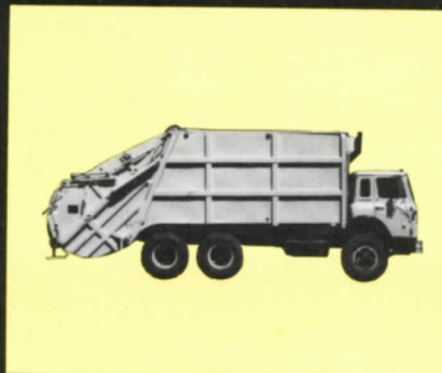
# Available in 3 Sizes



Three sizes are available to the 2-R buyer: 20-yard... 25-yard... and for the large volume user... a 31-yard 2-R. Whichever size is specified, the 2-R will perform with reliability and deliver the highest payload returns.



20-Yard 2-R Packmaster



25-Yard 2-R Packmaster



31-Yard 2-R Packmaster

## Leach 2-R Packmaster... accepted wherever refuse is collected



**For Commercial & Industrial Route Collection**... used by contractors of every size and every volume application, whether one-unit or fleet buyer... their Number One Choice.



**For Residential Routes**... growing in popularity in the smaller community to the large metropolis... whether contractor or municipally operated.

Manufacturer reserves the right to make certain component changes to improve and upgrade its equipment as it sees fit without notice.

# LEACH



Largest payloads...  
Contractors #1 Choice



C. N. WOOD CO., INC.  
570 ARSENAL STREET  
WATERTOWN, MASS. 02172  
923-0200 926-3200

*Nobody does it better*  
**LEACH**   
Pacesetter in Sanitation



2 North LaSalle Street  
Chicago, Illinois 60602  
(312) 236-0728

International Distribution:  
EL Industries International  
2 North LaSalle Street • Chicago, Illinois 60602  
Cable: ElginLeach Chicago • Telex 25-4146