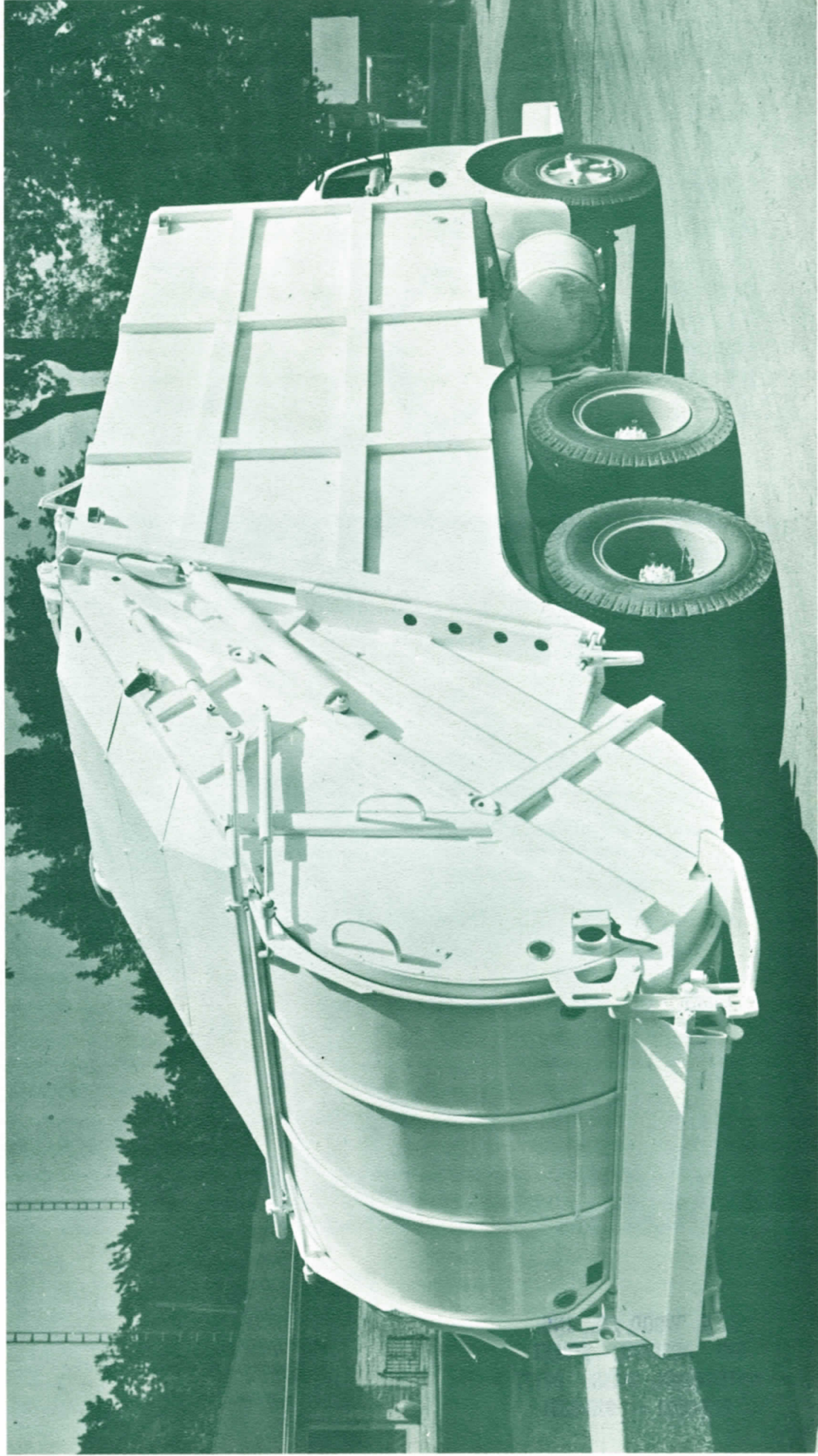


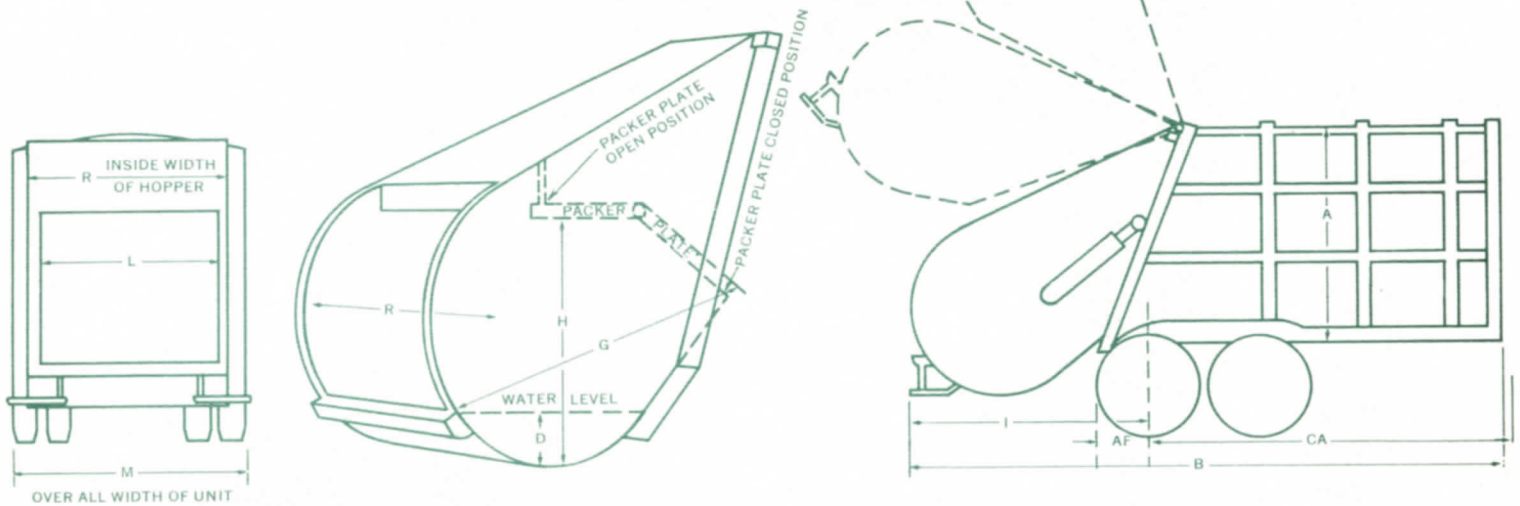
GREATEST COMPACTION EVER!
LEACH 2-R PACKMASTER[®] WITH  **PUSH-OUT** 



LEACH A GUARANTEED QUALITY AMERICA'S MOST EFFICIENT REFUSE COMPACTION UNIT!

SPECIFICATIONS

LEACH 2-R PACKMASTER PUSH-OUT BODY 20 AND 25 CUBIC YARD SIZES



DIMENSIONS

Capacity	AF	B	CA*	I	A	L	M	R	Loading Height	Net Weight	Hopper Capacity	D	G	H
20 YD.	19 $\frac{1}{4}$ "	249"	148 $\frac{1}{4}$ "	99 $\frac{3}{4}$ "	96"	74"	96"	80"	5" Below Frame	Approx. 13,396	2 YD.	16"	82"	56"
25 YD.	19 $\frac{1}{4}$ "	270"	169 $\frac{1}{4}$ "	99 $\frac{3}{4}$ "	96"	74"	96"	80"	5" Below Frame	Approx. 13,526	2 YD.	16"	82"	56"

- NOTE: Truck selected must be capable of carrying net weight of body plus weight of refuse to be collected.
*CA dimension is to C/L of rearmost wheel. Truck equipped with diesel engine requires full variable speed governor.
Specifications subject to change without notice.

BODY

1. 20 and 25 cubic yard capacity.
2. Sides and top are made of 11 gauge steel. Bottom is $\frac{3}{16}$ " thick steel.
3. Sides, front and rear reinforced with electrically welded box-sections.
4. Contents of body sealed off from outside during compaction period.
5. Steps and grab handles both sides of tailgate.
6. Buzzer system provided at rear to enable loaders to signal driver.
7. Load is pushed out by simple, easily maintained double acting cylinder.

FINISH

Baked on enamel finish.

TAILGATE

1. 2 cubic yard hopper capacity.
2. Entirely constructed of EX-TEN or equal alloy steel.
3. Packer and carrier plates constructed of $\frac{3}{16}$ " thick EX-TEN steel.
4. Opens wide and stays clear of unloaded refuse when driving from unloading area.
5. Dual door can be operated automatically.
6. Single lever control.

C. N. WOOD CO., INC.
570 ARSENAL STREET
WATERTOWN, MASS. 02172
923-0200 — 923-0201



ELGIN LEACH CORPORATION



SANITATION HEADQUARTERS
222 WEST ADAMS STREET • CHICAGO, ILLINOIS 60606

Sanitation is our only business