

LEACH

2-R II

SPECIFICATIONS



Body shown with optional equipment.

An Industry Legend Through Engineering Excellence!

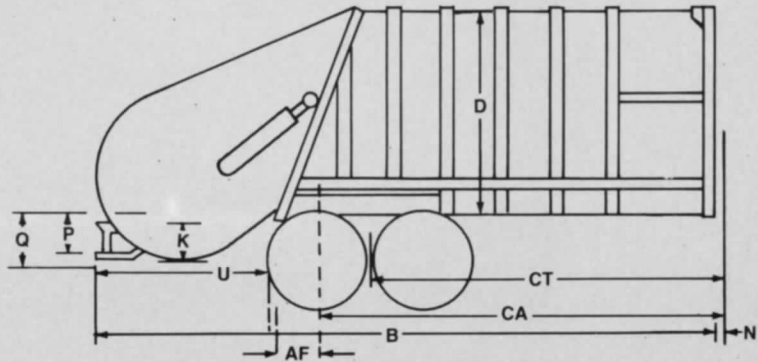
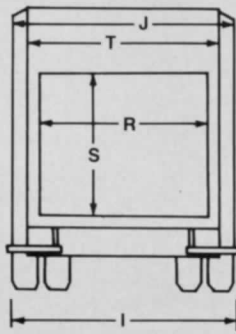
- Takes Virtually All Types Of Refuse
- Fully Usable 2.7 Cubic Yard Hopper
- Single-Lever Push-Out Control
- Single-Lever Packer Plate Control
- Clean Bulldozer-Shaped Push-Out Plate... Nothing Hangs Up At The Disposal Site
- Exclusive Leach Single Stage Push-Out System
- Open Front End And Standard Side Door For Easy Maintenance Access
- The Industry's #1 Choice
- The Best Compaction In The Industry... Bigger Loads; Fewer Trips; Greater Savings
- Leach Built... Leach Reliability
- Meets All ANSI Safety Standards
- Available In 20, 25, And 31 Cubic Yard Capacities
- Leach Exclusive Baked-On Enamel Finish
- Built Better To Last Longer

LEACH
GUARANTEED QUALITY

America's most efficient refuse collection systems

LEACH 2-R II

SPECIFICATIONS



BODY DIMENSIONS	20 Cu. Yd.	25 Cu. Yd.	31 Cu. Yd.	15m ³	19m ³	24m ³
AF After Frame	24"	24"	24"	610mm	610mm	610mm
B Overall Length	249"	270"	316"	6325mm	6858mm	8026mm
CA To Centerline of Rear Axle	150"	171"	217"	3810mm	4343mm	5512mm
CT To Centerline of Trunion (50" Beam)	125"	146"	192"	3175mm	3708mm	4877mm
D Height Above Chassis Frame (with 3" sill)	100"	100"	100"	2540mm	2540mm	2540mm
I Body—Outside Width	96"	96"	96"	2439mm	2439mm	2439mm
J Body Inside Width	90"	90"	90"	2286mm	2286mm	2286mm
K Hopper Depth	17"	17"	17"	432mm	432mm	432mm
N Interference Point Above Chassis Frame	4"	4"	4"	102mm	102mm	102mm
P Top of Step Below Chassis Frame	19"	19"	19"	483mm	483mm	483mm
Q Hopper Bottom Below Chassis Frame	23"	23"	23"	585mm	585mm	585mm
R Hopper Opening Width	80"	80"	80"	2032mm	2032mm	2032mm
S Hopper Opening Height	56"	56"	56"	1423mm	1423mm	1423mm
T Hopper Inside Width	80"	80"	80"	2032mm	2032mm	2032mm
U Rear of Body to Rear of Tailgate Closed	74"	74"	74"	1880mm	1880mm	1880mm
■ Height Above Chassis Frame (Tailgate Raised)	194"	194"	194"	4928mm	4928mm	4928mm
■ Loading Lip Below Chassis Frame	5"	5"	5"	127mm	127mm	127mm
■ Center of Gravity Measured From Front of Body						
—Body Only	117"	131"	151"	2972mm	3328mm	3836mm
—Pay Load	94"	103"	120"	2388mm	2617mm	3048mm
■ Hopper Capacity	2.7 Cu. Yd.	2.7 Cu. Yd.	2.7 Cu. Yd.	2.0 m ³	2.0 m ³	2.0 m ³
■ Approx. Body Weight	14,495 lbs	15,020 lbs	16,125 lbs	6575kg	6813kg	7314kg
■ Min Truck GVWR Requirement	46,000 lbs	52,000 lbs	60,000 lbs	21000 kg	24000 kg	28000 kg

NOTES: *Truck selected must be capable of carrying net weight of body plus weight of refuse to be collected.

*CA Must be usable with no obstructions protruding above frame.

*Specifications subject to change without notice.

Features

- Sides, front and rear reinforced with electrically welded box sections and channels.
- Contents of body sealed off from outside during compaction period.
- Steps and grab handles both sides of tailgate.
- Buzzer system provided both sides at rear to enable loaders to signal driver.
- Load is pushed out by simple, easily maintained, double-acting cylinder.
- Single lever packer control at rear of hopper ... curbside.
- Single lever ejection control at front of body ... street side.
- Single lever tailgate lift control at front of body ... street side.
- Leach exclusive baked-on enamel finish. White standard. Other colors optional. (Other colors may affect visibility)
- Meets all ANSI Safety Standards.

Hydraulic System

- **Cylinders**
 - (2) 6" double-acting packer plate cylinders*
 - (2) 6" double-acting carrier plate cylinders*
 - (1) 6" double-acting ejection cylinder
 - (1) 6" single-acting clamping cylinder
 - (2) 4" single-acting tailgate lift cylinders

*Packer and carrier plate cylinders are fully interchangeable ... an exclusive with the LEACH 2-R II.
- **Pump**
 - Leach — spur gear type
 - Capacity — 42 GPM @ 1200 RPM
 - Maximum operating pressure — 1650 PSI
- **Hydraulic Tank**
 - Capacity — 66 gallons
 - Location — Right hand front on floor inside body
 - Filters — 141 micron in-line suction strainer with by-pass valve
 - 20 micron return line filter with by-pass valve
- **Sight gauge** — located on tank at eye level

Body Construction

- **Sides** — 11 gauge Hi-Tensile, 50,000 PSI, 80,000 PSI
- **Top** — 11 gauge Hi-Tensile, 50,000 PSI, 80,000 PSI
- **Floor** — 11 gauge 80,000 PSI
- **Floor trough** — 5/16" 50,000 PSI

Tailgate Construction

- **Hopper sides** — 1/4" 50,000 PSI
- **Hopper bottom** — 1/4" 100,000 PSI
- **Packer and carrier plates** — 3/16" 50,000 PSI, Packer Face 1/4" 80,000 PSI
- **Top Sheet** — Secured with quick release fasteners ... easily removed for maintenance

Optional Equipment

- Chain container attachment
- Hydraulic container attachment
- 8,000 lb. overhead winch
- 12,000 overhead winch
- 12,000 lb. container lifting cylinder

You get more into it because we put more into it.

LEACH

Pacesetter in Sanitation

Leach Company
2737 Harrison Street • P.O. Box 2608
Oshkosh, WI 54903 • 414/231-2770

International Distribution:
EL Industries International, Inc.
P.O. Box 645 • Barrington, IL 60011, U.S.A.
Telephone 312/382-0004 • FAX 312/382-0053

C. N. WOOD CO., INC.
326 COMMERCIAL ST.
MALDEN, MA 02148
(617) 322-5300