

2R11 • Alpha • Beta • Delta

LEACH Rear Loaders

*Building Upon
a Legacy of
Dependability
and Performance*



- Exclusive floor-trough design
- Efficient single cylinder ejection system
- Large 3.5 yd hopper capacity (2R11 Model)
- Externally mounted tailgate props standard
- Low-maintenance, state-of-the-art hydraulics
- Integrated cast steel body and tailgate hinges
- Wrap-around structural body channel reinforcements

LEACH[®]
Subsidiary of Federal Signal Corporation

2RII • Alpha • Beta • Delta

LEACH Rear Loaders

king of the rear loaders



When Leach Company introduced the 2R Rear Loader in 1959, it revolutionized the collection and compaction of refuse. It quickly established a benchmark for others to follow. Today's 2RII is still setting the pace. Known among haulers as "the king of rear loaders," this reputation is closely shared by Leach's other three rear loaders, the Alpha, Beta and Delta.

With more than 65 years of on-the-street waste handling, it's easy to see how Leach earned such distinction. Utilizing computer-aided design techniques, finite element analysis and advanced manufacturing technologies, our rear loaders continue to provide the durability, longevity and productivity every hauler demands.

In addition, Leach customer support is still second to none. Over 50 distributor locations

provide parts and service support to Leach customers nationwide. Plus, our professional service and training departments are always available to help with questions or problems of any kind. All this ensures you that your Leach rear loaders will be on the street, not in the shop!

This level of service has earned the Leach Company tremendous customer loyalty. Through quality products, dealer support, and dedication to customer service, we want every customer to know that they're important to us.



One of the industry's first rear loaders, the Leach Garbage Getter (circa 1945)

king of collectors



If variety is the spice of life, then the Leach rear loader is king of collectors. Our huge hoppers accept many loveseats, sofas and chairs. Throw in bags of co-mingled recycling — our tailgates handle that material with ease. Add a cart tipper and

you are ready for residential container collection. Thanks to a variety of container handling options, Leach rear loaders pick up commercial loads, too. Whatever you need, there's a Leach rear loader for every hauler, municipal or private.



The legend continues with the industry's most versatile and durable line of performance-engineered rear loaders



Delta

The mid-compact, full-eject rear loader ideal for all residential use

- Body sizes: 14 to 25 cu yd
- Compaction rating: up to 800 lbs/cu yd
- Good weight distribution at full capacity
- Ideal for cart tipper residential routes (tipper optional)
- Externally-mounted tailgate prop standard
- Low hydraulic operating pressures (under 2,500 PSI)
- Full range of container handling systems
- Large 3.0 yd hopper capacity



Alpha

The medium/high-compact, full-eject rear loader ideal for residential and limited commercial applications

- Body sizes: 14 to 25 cu yd
- Compaction rating: up to 900 lbs/cu yd
- Fast compaction cycle time
- Good weight distribution at full capacity
- FET exempt for units under 20 cu yds
- Full range of optional container handling and cart tipper systems
- Externally-mounted tailgate prop standard
- Handles co-mingled bagged recycling collection with ease
- Large 3.0 yd hopper capacity



Beta

The high-compact, full-eject rear loader ideal for residential and limited commercial applications

- Body sizes: 16 to 25 cu yd
- Compaction rating: up to 1,000 lbs/cu yd
- Fast compaction cycle time
- Lighter weight, high compaction unit with good weight distribution
- Additional reinforcements engineered into high-compact areas
- Externally-mounted tailgate prop standard
- Handles co-mingled bagged recycling collection with ease
- Full range of container handling systems
- Large 3.0 yd hopper capacity

Look for these standard features on every Leach Rear Loader

- Huge hopper capacity
- Two-spool tailgate lift-and-eject valve with built-in load density control
- Single operating valve and dual lever tailgate controls
- Full-weld wrap-around roof and side reinforcement channels
- Single-piece floor-trough for added body strength
- Heat-shrink sealed, weather-proof wire connectors
- Grab handles and large adjustable steps on both sides of tailgate
- Exclusive two-by-two polyurethane custom finish
- 10 micron filtration on hydraulics
- Buttons (2) on tailgate for signaling cab operator
- Back-up alarm



LEACH 2RII

The highest-compaction, full-eject rear loader ideal for all residential and commercial use

- Body sizes: 20 to 31 cu yd
- Compaction rating: 1,000-plus lbs/cu yd
- Load-edge stress-sensing protection circuitry
- Rugged construction for day-in, day-out container handling
- Large 3.5 yd hopper capacity
- Full range of container handling systems
- Tag axle option for better weight distribution
- Optional commercial/demolition packages for extra heavy-duty applications

For more demanding applications, specify a commercial or heavy-duty rear loader package

2RII Commercial Package

The 2RII Commercial Package adds strength to body and tailgate in high-stress, high-wear areas:

- Floor increased from 11 ga to 1/4" steel
- Front sections of side and roof increased from 50,000 PSI to 80,000 PSI steel (rear already is 80,000 PSI)
- Ramps increased from 5/16" 50,000 PSI to 3/8" 80,000 PSI steel
- Hopper bottom increased from 1/4" 100,000 PSI (T-1) to 1/2" 100,000 PSI (T-1) steel
- Carrier plate partition sheet increased from 11 ga 50,000 PSI to 3/16" 80,000 PSI steel
- Heavy-duty packer plate

Alpha Commercial Package

This modified Alpha rear loader provides a light-weight body with added strength for tough-duty residential and limited commercial applications.

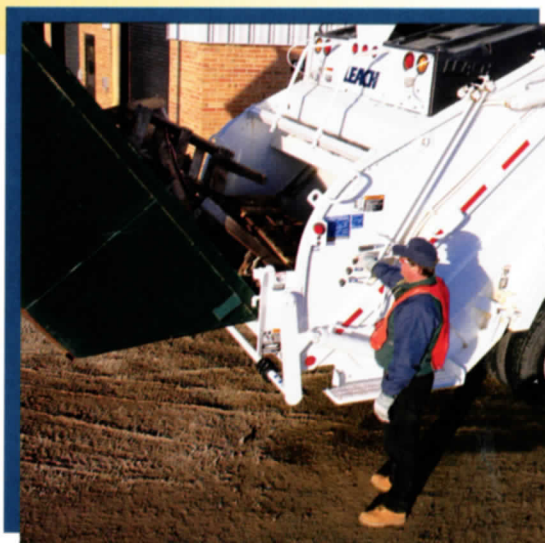
- Heavy-duty packer and carrier plate
- 1/4" 100,000 PSI (T-1) steel hopper bottom
- 1/8" 50,000 PSI apron and partial floor liner
- Body channel corner gussets
- Rear body side sheet reinforcement plate

2RII Demolition Package

This is the toughest, most rugged rear loader on the road, capable of handling the larger, dry debris of construction remodeling or demolition.

- 1/2" 100,000 PSI (T-1) steel hopper floor
- 1/2" 50,000 PSI steel hopper sides
- 1/4" thick steel upper tailgate sides
- 1/4" thick steel body sides and roof
- 1/4" 80,000 PSI steel packer panel face sheet with 1/4" 50,000 PSI steel liner
- 3/16" 50,000 PSI steel carrier plate face and face sheet liner
- Larger telescoping ejection cylinder
- Full-wrap center packer bearings

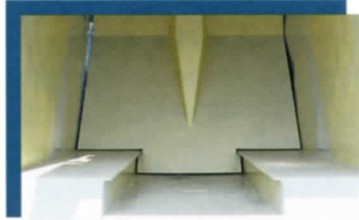
Available on 25 and 31 cu yd bodies



The 2RII Demolition Package handles the large, dry debris of construction remodeling and/or demolition.

Nobody Builds a Rear Loader Like Leach

Through continuous engineering improvements, Leach rear loaders are better than ever. Today's Leach rear loaders are constructed using strain-gauge analysis and abrasion-resistant (AR) steel in strategic wear areas. You'll also find state-of-the-art hydraulics, improved electronics, smooth single-cylinder ejection systems, and a wide range of container handling options. Every body is shot blasted rust-free prior to priming and painting with our exclusive two-by-two polyurethane custom finish.



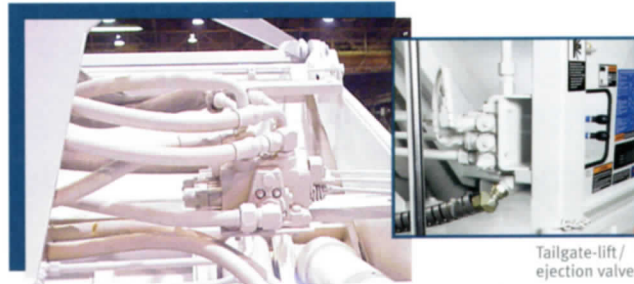
Leach floor-trough

Exclusive Floor-Trough Design

- Creates a backbone with superior strength
- Provides natural channel strength and sump capacity for liquid seepage
- Eliminates heavy sub-frame structures needed with flat floors
- Solid 5/16" 50,000 PSI one-piece construction (2RII)
- Solid 1/4" 80,000 PSI one-piece construction (Alpha, Beta, Delta)

State-of-the-Art Hydraulics (2RII)

- Hydraulic valving placement for easy access
- Routing of tubing and hoses reduces the number of fittings
- Direct-mount controls for tailgate lift and ejection
- Single-valve packing control
- Two-lever control for independent packer and carrier operation
- Low operating pressures



Packing control valve

Tailgate-lift / ejection valve



Real Body Strength

- On the 2RII, sides and roof steel increases from 50,000 PSI in front to 80,000 PSI in rear where compaction forces are greatest
- Reinforced channels interlock at corners to form a wrap-around design
- Channels strategically placed closer together at rear where compaction forces are highest
- Cast steel hinges incorporated into rear frame provide superior hinge area strength

A Smarter Ejection System

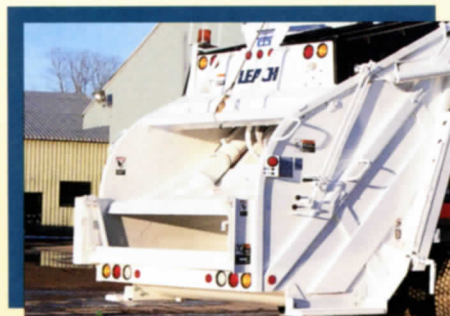
- Adjustable load density control tailors compaction ratios
- Single-cylinder ejection design
- Ejection cylinders positioned safely off the floor out of debris
- Saddle-mounted eject panel connection simplifies cylinder removal
- Ejection panel wear shoes replaceable without panel removal



2RII



Alpha/Beta/Delta



The 2RII Tailgate

A Legendary Tailgate

- Formed channel reinforcements on tailgate sides
- Hopper area side sheets are 1/4"-thick, high-strength steel
- Proven "split panel" packing mechanism handles both residential and commercial collection stops
- Heat treated rollers and track bars for superior life
- Low loading height for easy operation on the route
- Huge 3.5 yd hopper capacity — means more collection and less cycling load after load
- Cast steel hinges for greater durability

LE

NAT
CUS

As a
have
of a r
reput
deale
comr
with
throu
servi
servi
parts
be far
or ex
Leach

LEA

Our
maint
of qu
comp
imme
meet

SER

The
is full
deale
preve
warr
servi
relate
and c
throu
on-si
phon

THE

Leach
access
order
infor
e-Le
This
provi
parts
supp
engin
deale

Effective
equipm

LEACH Rear Loaders

Quik-Spec Overview

NATIONWIDE CUSTOMER SUPPORT

As a Leach customer, you'll have the continual support of a nationwide network of reputable, independent Leach dealers. These dealers are committed to providing you with "Total Product Support" through their well-equipped service facilities, knowledgeable service technicians, and stock parts inventories. You'll never be far from the immediate service or expertise needed to keep your Leach fleet on the job.

LEACH SIGNATURE PARTS

Our factory-trained dealers maintain on-site inventories of quality Leach parts and components, available for immediate shipment to meet your needs.

SERVICE AND SUPPORT

The Leach Service Department is fully prepared to assist both dealers and customers with preventive maintenance, repair, warranty administration, training, service publications, and other related needs. Product support and education are provided through Leach training schools, on-site training, and technical phone support 24/7.

THE e-LEACH ADVANTAGE

Leach dealers have immediate access to parts availability, order status — even warranty information. You can even use e-Leach for parts ordering. This leading-edge web site also provides access to service and parts manuals and service bulletins supported by a key-word search engine. Contact your local Leach dealer for a personal introduction.

Leach Rear Load Models		Residential/Limited Commercial Applications			Extra Heavy-Duty Res./Comm.
		Delta	Alpha	Beta	2RII
Cubic Yard Capacities	14	S	S		
	16	S	S	S	
	18	S	S	S	
	20	S	S	T	T
	25	T	T	T	T
	31				T
	Axles	S = single axle, T = tandem axle			
Tag Axle Option					x
Hopper Capacity		3.0yd	3.0yd	3.0yd	3.5yd
Commercial Pkg. Upgrade		x	x		x
Compaction Ratings		700 to 800 lbs per cu yd	800 to 900 lbs per cu yd	900 to 1000 lbs per cu yd	1000+ lbs per cu yd
Container Handling Options	Drum Winch	x	x	x	x
	Cart Tipper(s)	x	x	x	x
	Reeving Cylinder	x	x	x	x
	Push bar	x	x	x	x
Tailgate Construction	Hopper Sides	3/16" 80,000 PSI	3/16" 80,000 PSI	3/16" 80,000 PSI	1/4" 50,000 PSI
	Hopper Bottom	3/16" 100,000 PSI (T-1)	3/16" 100,000 PSI (T-1)	1/4" 100,000 PSI (T-1)	1/4" 100,000 PSI (T-1)
	Packer Plate	3/16" 50,000 PSI	3/16" 50,000 PSI	3/16" 100,000 PSI	1/4" 80,000 PSI
	Carrier Plate	3/16" 50,000 PSI	3/16" 50,000 PSI	3/16" 50,000 PSI	3/16" 50,000 PSI
Body Construction	Sides: Front	11 ga high tensile	11 ga high tensile	11 ga high tensile	11 ga 50,000 PSI
	Sides: Rear	11 ga 80,000 PSI	11 ga 80,000 PSI	11 ga 80,000 PSI	11 ga 80,000 PSI
	Floor	10 ga 50,000 PSI	10 ga 50,000 PSI	10 ga 50,000 PSI	11 ga 80,000 PSI
	Floor Trough	1/4" 80,000 PSI	1/4" 80,000 PSI	1/4" 80,000 PSI	5/16" 50,000 PSI

Due to our constant effort to offer the finest products available, we must reserve the right to change specifications without notice and without obligation to install them on units sold. Illustrations shown may include optional equipment and accessories, and may not include all standard equipment.

C. N. WOOD CO., INC.
 200 MERRIMAC STREET
 WOBURN, MA 01801
 781-935-1919

LEACH[®]
 Subsidiary of Federal Signal Corporation

920-231-2770 Phone
 920-231-2712 Fax
 Leach Company
 2737 Harrison Street
 P.O. Box 2608
 Oshkosh, WI, U.S.A. 54903
 www.LeachUSA.com

International Distribution:
 EL Industries International, Inc.
 P.O. Box 645
 Barrington, IL, U.S.A. 60011
 847-382-0004 Phone
 847-382-0053 Fax

