

# 2R™-III

## REAR LOADER

Featuring the  
Series III Rounded Body  
and the 2R Tailgate  
with *FastPAK™* Hydraulics

C. N. WOOD CO., INC.  
200 MERRIMAC STREET  
WOBURN, MA 01801



### *The Most Versatile, High-Compaction, Full-eject Rear Loader*

#### **Built to Handle the Big Loads**

Meet this year's MVP (Most Valuable Packer) – the 2R™-III Rear Loader from Leach. Now the industry's toughest tailgate has a *FastPAK™* hydraulic system along with Leach's innovative Series III Rounded Body for an unbeatable combination. The *FastPAK* system delivers superior cycle times. Equally impressive, the Series III Body features exceptional strength end-to-end along with increased ejection force.

#### **The 2R Tailgate is Built to Perform**

- High-compaction ratings – 1,000-plus lbs./cu. yd.
- *FastPAK™* hydraulic system now standard
- Interchangeable packer and carrier cylinders
- Load edge height – 5" below chassis frame
- Dual-lever packing controls – curbside
- Huge 3.5 cu. yd. hopper – 1/4" 100,000 PSI steel bottom
- Full range of optional container handling systems

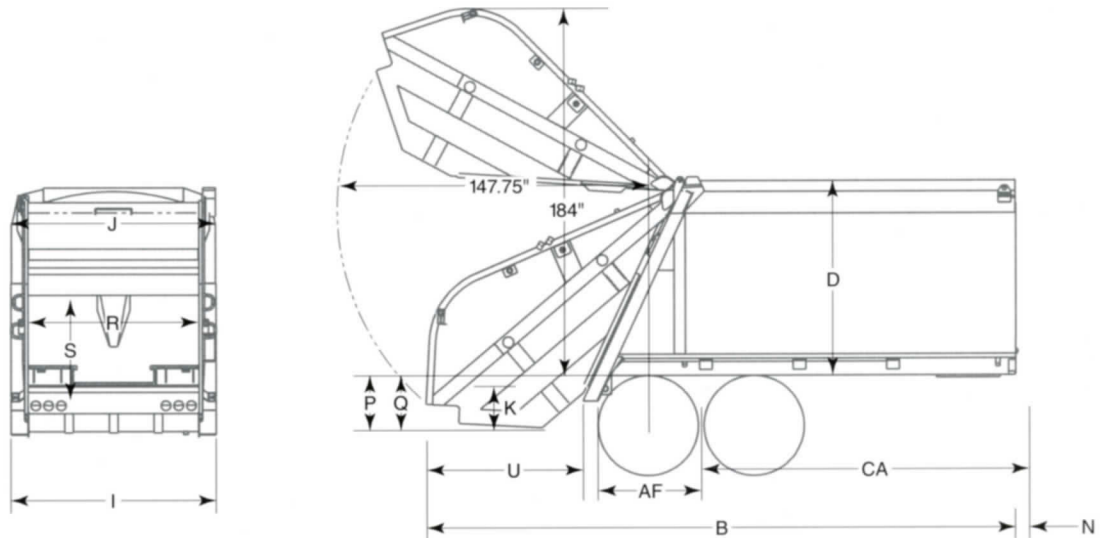
#### **The Series III Rounded Body is Exceptionally Strong**

- Exceptionally strong body – 80,000 PSI steel end-to-end
- Greater ejection force – 15% more than previous model
- Unique 6" floor flanges – double life of lower edges
- Lower overall height – reduced 5"
- Thicker floor – 1/4" 50,000 PSI steel
- Superior floor strength – 5/16" steel one-piece floor trough
- Smooth exterior sides – simplify signage
- Plated hydraulic tubing – 100-hour salt spray performance tested
- Front body upper enclosure – now standard
- Sealed and grommet-mounted lights
- Heat shrink wire connections throughout
- Ejector panel wear shoes – self-cleaning, easy access



**Stronger All Around.**

# 2R-III™



BODY DIMENSIONS	20 CU. YD. (15 CU. M)	25 CU. YD. (19 CU. M)	29 CU. YD. (22 CU. M)	32 CU. YD. (24 CU. M)
B Overall Length	262" (6,655 mm)	284" (7,214 mm)	317" (8,052 mm)	340" (8,636 mm)
CA (Note 2)	134" (3,404 mm)	156" (3,962 mm)	189" (4,801 mm)	206" (5,232 mm)
AF After Frame	51" (1,295 mm)	51" (1,295 mm)	51" (1,295 mm)	57" (1,448 mm)
• Min. Truck GVWR Requirement (Note 1)	50,000 lbs. (22,680 kg)	56,000 lbs. (25,401 kg)	60,000 lbs. (27,216 kg)	62,000 lbs. (28,123 kg)

BODY DIMENSIONS	ALL SIZES
D Height Above Chassis Frame	93" (2,362 mm)
I Body - Outside Width	96" (2,438 mm)
J Body - Inside Width (Max)	90" (2,286 mm)
K Hopper Depth	18" (457 mm)
N Start of Clear CA to Body Front	2" (51 mm)
P Top of Step Below Chassis Frame	22"-26" (559-660 mm)
Q Hopper Bottom Below Chassis Frame	27" (686 mm)
R Hopper Opening Width	80" (2,032 mm)
S Hopper Opening Height	56" (1,422 mm)
U Rear of Body to Rear of Tailgate, Closed	73" (1,854 mm)
• Height Above Chassis Frame (Tailgate Raised)	184" (4,674 mm)
• Loading Sill Below Chassis Frame	5" (127 mm)
• Hopper Capacity	3.5 cu. yd. (2.7 m <sup>3</sup> )

## Features

- Adjustable steps and stationary grab handles on both sides of tailgate
- Lightweight, two-piece black poly top sheets (covers) provide quick easy access and improve serviceability for hydraulic components
- Optimum tailgate seal height reduces chance of seepage
- Buzzer system enables loaders to signal driver (located both sides at rear)
- Dual-lever packing controls at rear of hopper, curbside
- Single-lever tailgate lift control is located at the front of body, street side
- Leach exclusive polyurethane paint process
- White color standard, other colors available
- Meets all ANSI Z-245.1 Safety Standards

- Notes:
1. Truck selected must be capable of carrying net weight of body plus weight of refuse to be collected.
  2. CA must be usable with no obstructions protruding above frame.

## Hydraulic System

- Cylinders
  - (2) 5.5" double-acting packer plate cylinders
  - (2) 5.5" double-acting carrier plate cylinders
  - (2) 4" single-acting tailgate lift cylinders

- Hydraulic Tank
  - Capacity - 50 gallons
  - Location - Right-hand front on floor inside body
  - Filters - 141 micron in-line suction strainer with by-pass valve
  - 10 micron return line filter with by-pass valve
- Sight gauge - located on tank at eye level

## Optional Equipment

- Container handling
- Cart tippers
- Lighting packages
- Commercial application packages
- Demolition debris application packages
- Many others available upon request

## Ejection Cylinder

Body Size	Stages	Sizes
20	3	6x5x4
25	3	6x5x4
29	4	6x5x4x3
32	5	7x6x5x4x3

- Packer and carrier plate cylinders are fully interchangeable, an exclusive with the 2R-III.
- Pump
  - Leach - gear type pressure compensating
  - Capacity - 42 GPM @ 1,200 RPM
- Maximum Operating Pressure - 2300 PSI

## Body Construction

- Sides - 11 gauge Hi-Tensile, 80,000 PSI
- Top - 11 gauge Hi-Tensile, 80,000 PSI
- Floor - 1/4" 50,000 PSI steel
- Floor-Trough - 5/16" steel one-piece construction

## Tailgate Construction

- Hopper sides - 1/4" 50,000 PSI
- Hopper bottom - 1/4" 100,000 PSI
- Carrier plate face - 3/16" 50,000 PSI
- Packer face 1/4" 80,000 PSI
- Top Sheet easily removed for maintenance



920-231-2770 Phone  
 920-231-2712 Fax  
 Leach Company  
 2737 Harrison Street  
 P.O. Box 2608  
 Oshkosh, WI, U.S.A. 54903  
 www.LeachUSA.com

