

The Standard of
Leadership in Quality

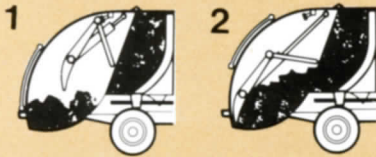
Leach Packmaster S-II



America's most efficient refuse collection systems

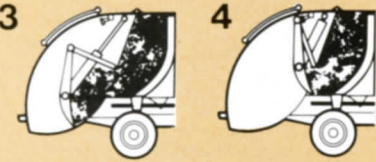
Leach Pa

Packmaster power compaction steps :



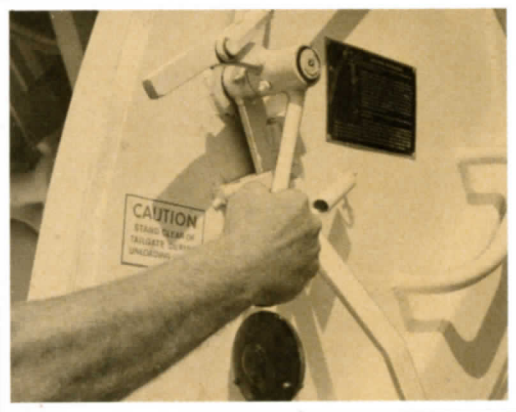
Packer Plate travels "over" hopper load.

Packer Plate is positioned behind the load.



Bulk of hopper load has been pushed into body.

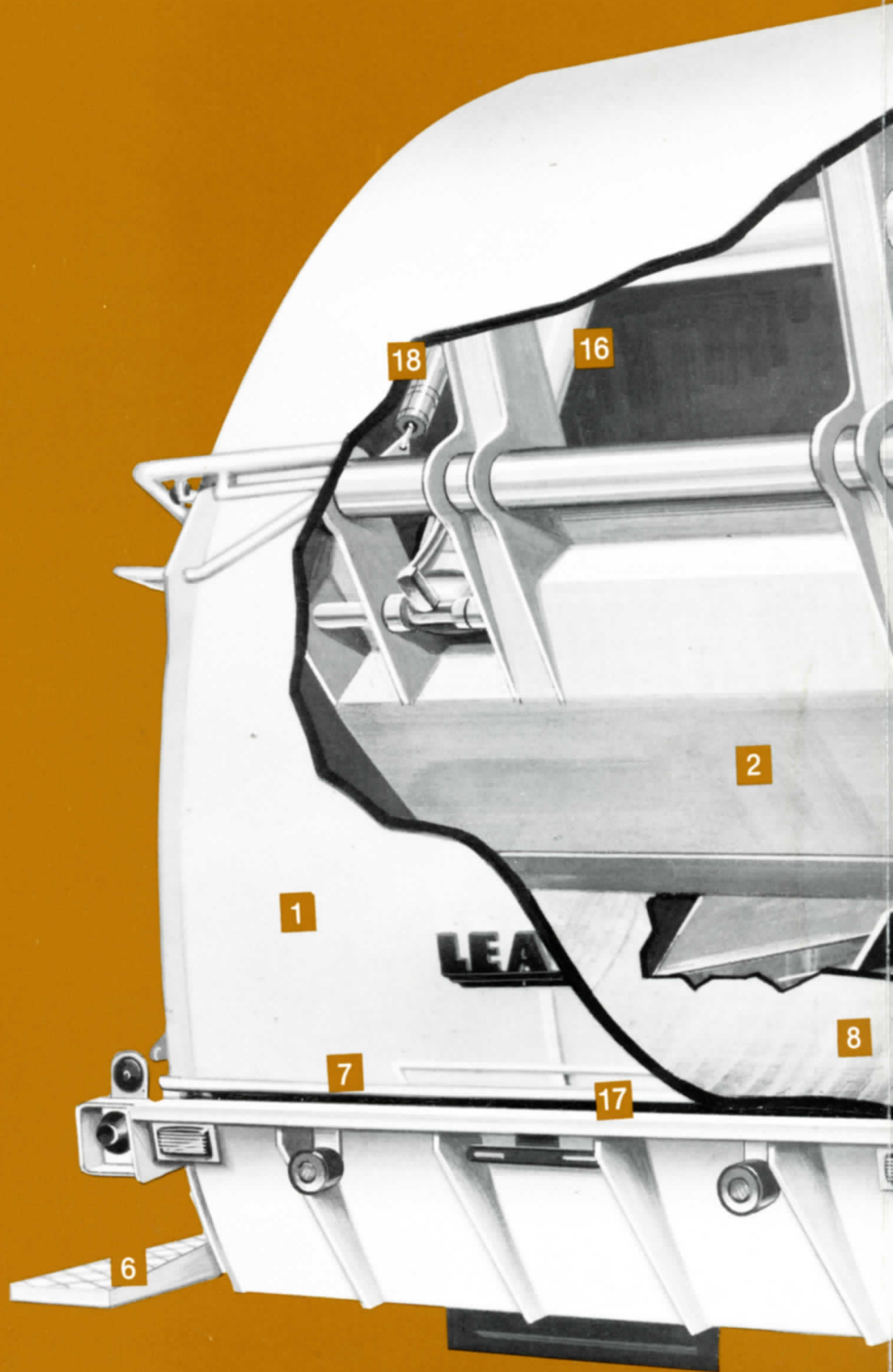
Packer Plate compacts load against Push-Out Plate. Sequence completed.



Single-Lever Packer Plate Control. Simple and trouble-free ... one push of the lever does the job. No holding of lever is required. Also Packer Plate can be stopped or reversed at any time.



Single-Lever Push-Out Control. Simple to operate. One lever lifts tailgate. A second adjacent lever pushes out the load ... quickly and cleanly.



ackmaster S-II



Open, Accessible Front End.
Push-Out mechanism is readily accessible when the need arises. A great advantage for easier maintenance. No side access door necessary.

Standard Features

- | | | |
|--|--|--|
| 1 Rear Hopper Door | 7 Low Loading Height
(4" below truck frame) | 13 Standard Truck Chassis |
| 2 Packer Plate | 8 Fully Usable Hopper
77" x 48" x 54" | 14 Hydraulic Oil Tank |
| 3 Push-Out Plate | 9 Pre-Stressed Extra
Strength Side Channels | 15 Durable Steel Rollers |
| 4 Push-Out Cylinder
Clamping System | 10 Seven Step, Baked-On
Enamel Finish | 16 Heavy-Duty Double-Acting
Packing Cylinders |
| 5 Push-Out Bar | 11 Triple Horizontal
Corrugations... For Extra
Strength and Rigidity | 17 Steel Bar Hopper Loading
Edge |
| 6 Non-Skid Riding Steps | 12 Tailgate Clamping
Turnbuckles | 18 Packer Plate Holding
Cylinder |
| | | 19 Reduced over-all weight
(not shown) |

The Inside Story... Built to Last

The Leach Packmaster S-II is designed to do the incredibly tough job of collecting every type of refuse... garbage, trash and bulky materials of almost every variety... and keep on working.

The reason for this is that the Packmaster S-II is built with over

90% of its basic components designed, created and assembled in the Leach plant.

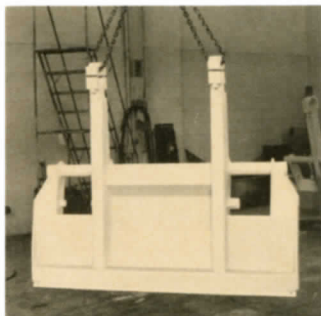
The Leach name means rugged and reliable performance throughout the world where its units have been purchased by thousands and thousands of

users... municipalities, contractors, industries and institutions.

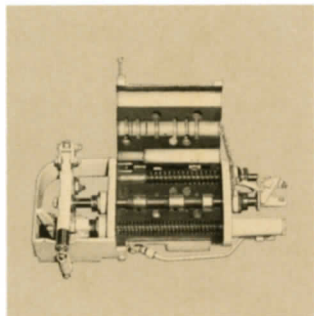
Yes, the Leach Packmaster S-II is built stronger and lasts longer. It was planned that way, every step of the way.



Special Features of the Leach Packmaster® S-II



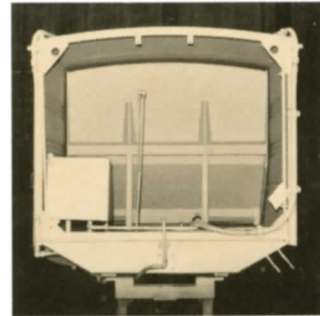
Packer plate. Steel constructed for extra durability. The cutting edge of the packer plate is made of a special steel equal to that used in the finest quality road grader blades.



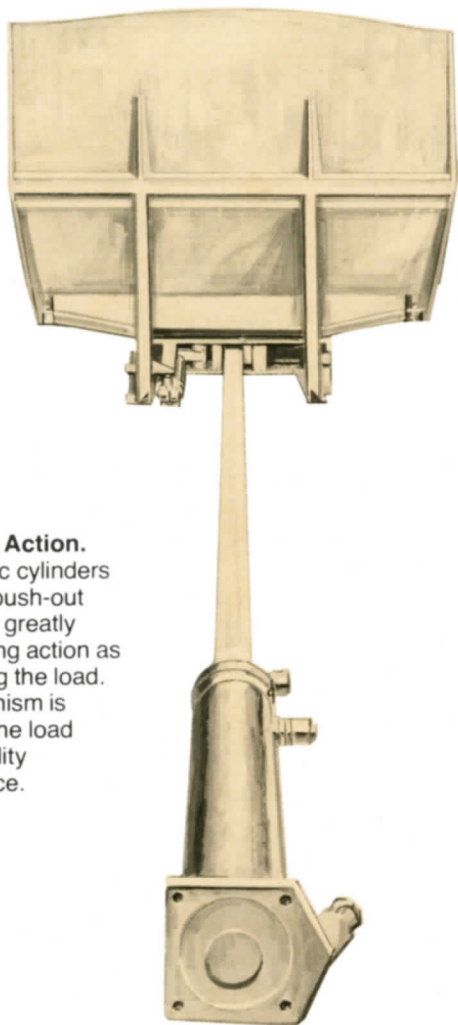
Main operating valve. Controls operation of packing mechanism. Valve is precision manufactured by LEACH to meet exacting quality control standards.



Extra strong tailgate and hopper. The S-II's hopper is designed for the toughest jobs... it is specifically braced, and reinforced to withstand years of hard work and the tremendous stresses exerted in the consuming of all types of refuse.



7-step baked-on enamel finish. Every LEACH body is given a seven-step finish... rough edges are ground smooth. The body is degreased, then shot blasted, primed, painted with two coats of high quality enamel and then the enamel is baked on at 240° Fahrenheit for a hard durable finish. The result is the toughest and best looking finish available.



Power Push-Out Action. Two non-telescopic cylinders control the entire push-out mechanism which greatly assist in the packing action as well as discharging the load. The entire mechanism is located ahead of the load for easy accessibility during maintenance.



Crushes refuse into greater payloads. The packer plate, powered by two 5" double-acting cylinders, reaches out over the load in the hopper and crushes as it compacts the refuse into the body. Refuse is retained by the packer plate after the packing cycle is completed.



Adaptable to many sizes of containers. The Packmaster S-II will handle several sizes of containers. A variety of attachments are available from cables on the packer blade to a hydraulic container lift to an overhead winch hoist. Ask your LEACH distributor for details on the attachment best suited to your needs.

Available in 5 sizes to meet every need.



25 cu. yd. Tandem



20 cu. yd.



17 cu. yd.



16 cu. yd.



13 cu. yd.

There is a Packmaster S-II built to meet the many needs... of many markets.

- large contractor ■ small contractor ■ industrial
- institutions ■ large city ■ small city



RESIDENTIAL



INDUSTRIAL



MUNICIPAL



INSTITUTIONAL


Packmaster Acceptance is the result of Leach quality manufacturing

570 ARSENAL STREET
WATERTOWN, MASS. 02172

It makes life a lot nicer

LEACH
Pacesetter in Sanitation

 Elgin
Leach
Corporation


222 West Adams St.
Chicago, Illinois 60606

International Distribution:
Elgin Leach International, Inc.
222 West Adams Street • Chicago, Illinois 60606