

# Leach Packmaster S-II

SPECIALIZATIONS



## The New Standard of Leadership in Quality

- Excellent compaction . . . maximum payloads
- Outstanding performance
- Takes all kinds of refuse
- Low maintenance . . . less down time
- Leach reliability . . . Leach acceptance

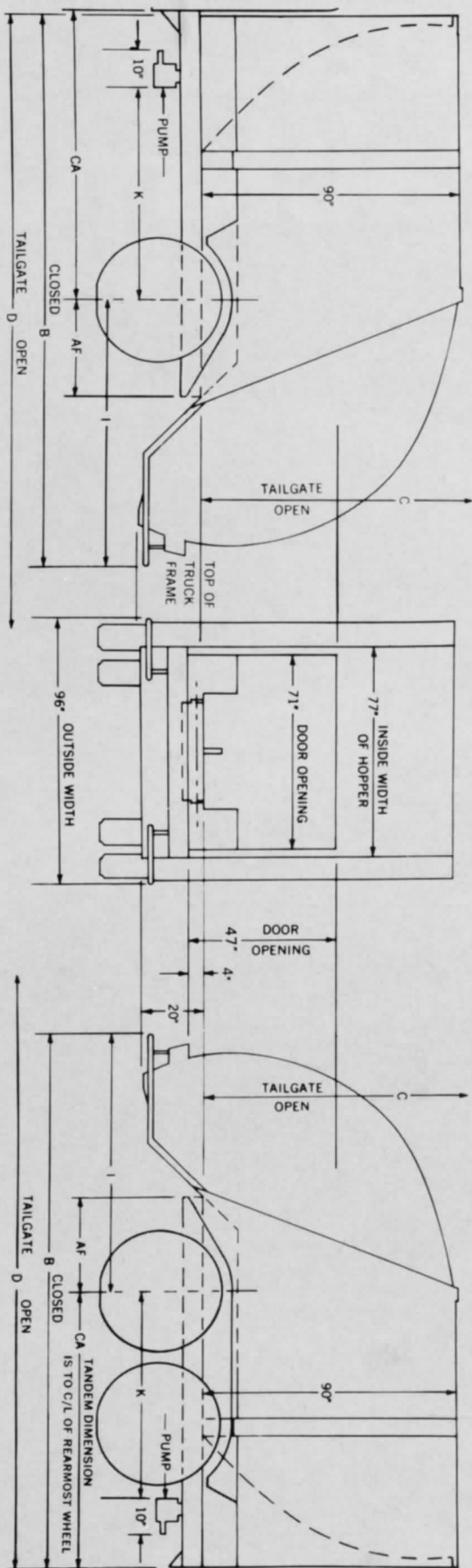


America's most efficient collection systems



# LEACH PACKMASTER S-II

# SPECIFICATIONS



## DIMENSIONS

### SINGLE AXLE

CAPACITY	AF	B	C	CA	D	I	K	NET WEIGHT	HOPPER CAPACITY
13 YD.	34½	172	148	84*	222	88	60	9,100	1½ YD. †
16 YD.	39½	195	148	102*	245	93	78	9,460	1½ YD. †
17 YD.	34½	208	148	120*	258	88	96	10,080	1½ YD. †
20 YD.	34½	223	148	135*	273	88	111	10,320	1½ YD. †

### TANDEM AXLE

CAPACITY	AF	B	C	CA	D	I	K	NET WEIGHT	HOPPER CAPACITY
20 YD.	25½	223	148	144*	273	79	120	10,320	1½ YD. †
25 YD.	30½	250	148	166*	300	84	146	10,880	1½ YD. †

\*Note: CA dimension shown is nominal and may be shorter or longer depending on load distribution limitations and turning radius requirements. CA must be usable with no obstructions protruding above frame. CA is measured to center line of axle.

On Tandem Chassis CA dimension is to center line of rear-most wheel. CA must be usable with no obstructions protruding above frame.

Container Attachment is available on 13, 16, 17, 20 and 25 cubic yard models. Safety Door is standard on 13, 16, 17, 20 and 25 cubic yard models. Specifications subject to change without notice. The Packmaster is manufactured by LEACH COMPANY, OSHKOSH, WISCONSIN and is sold nationally through the distributor organization of ELGIN LEACH CORPORATION.

Note: The truck selected must be capable of carrying net weight of hopper plus weight of refuse to be collected.

†Hopper capacity is rated in accordance with standard industry practice.

## BODY

- 13 to 25 yard capacities.
- Sides and top are made of 11 gauge steel. Bottom is 11 gauge and 5/16" thick steel.
- Sides, front and rear reinforced with electrically welded box-sections.
- Contents of body sealed off from outside during compaction period.
- Steps and grab handles both sides of tailgate.
- Buzzer system provided at rear to enable loaders to signal driver.
- Load is pushed out by simple, easily maintained double acting cylinder.

## FINISH

Baked on enamel finish.

## TAILGATE

- 1½ cubic yard hopper capacity.†
- Constructed of EX-TEN or equal alloy steel.
- Packer plate constructed of EX-TEN steel.
- Opens wide and stays clear of unloaded refuse when driving from unloading area.
- Safety door can be operated automatically.
- Single lever-control operates packing mechanism.

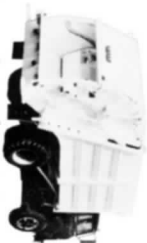
**Special Note: Truck equipped with diesel engine requires variable speed governor.**

For more information, write for complete details

Makes life a lot easier

# LEACH

## Pacesetter in Sanitation



222 West Adams St.  
Chicago, Illinois 60606

International Distribution:  
Elgin Leach Corporation  
222 West Adams Street • Chicago, Illinois 60606