

**SYSTEMS IN SANITATION**

from

E

L



**ingenuity**

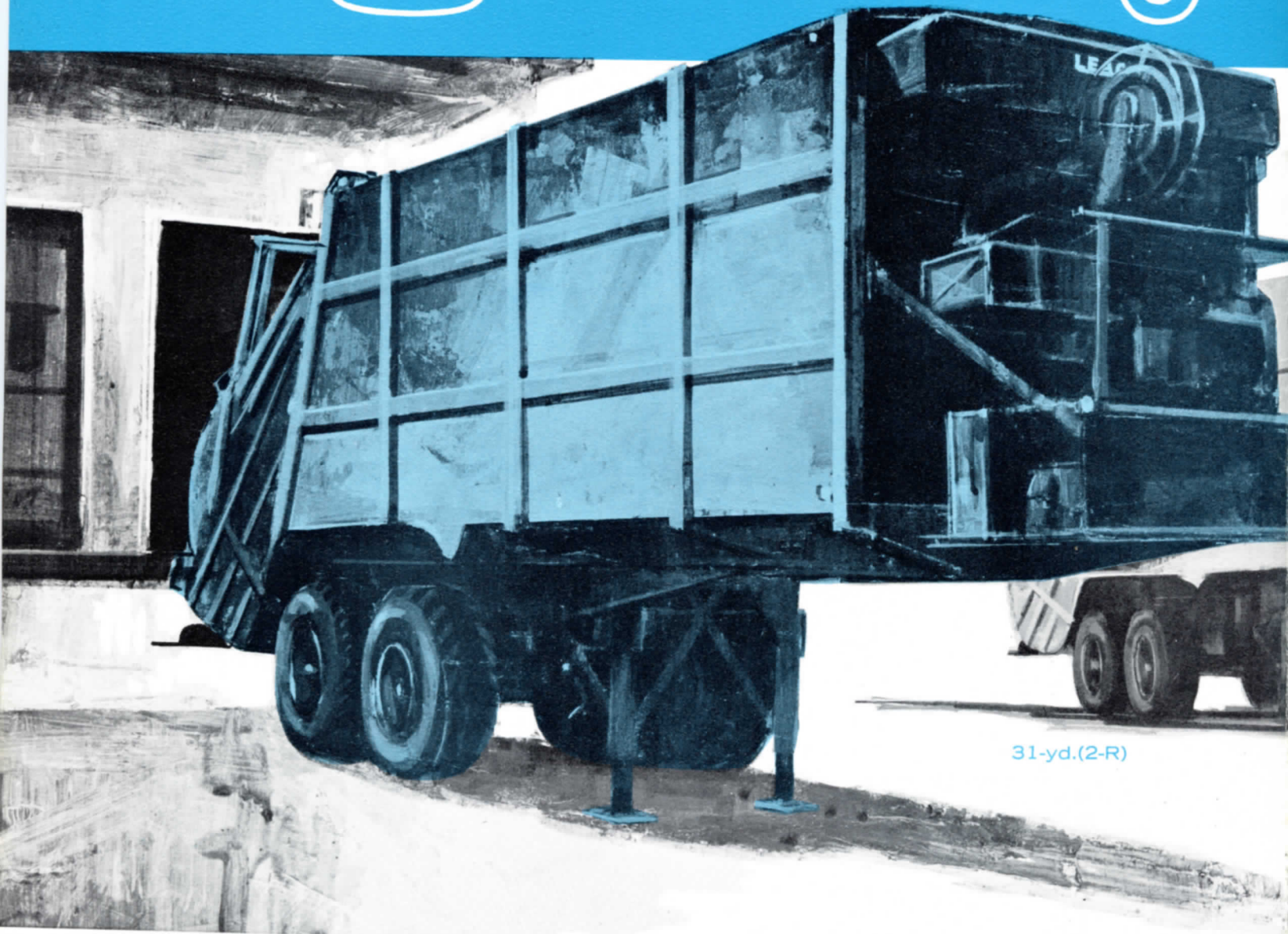
*tested...proven...demanded*

*...leading to more practical systems  
in refuse material handling*

**LEACH**  
GUARANTEED QUALITY

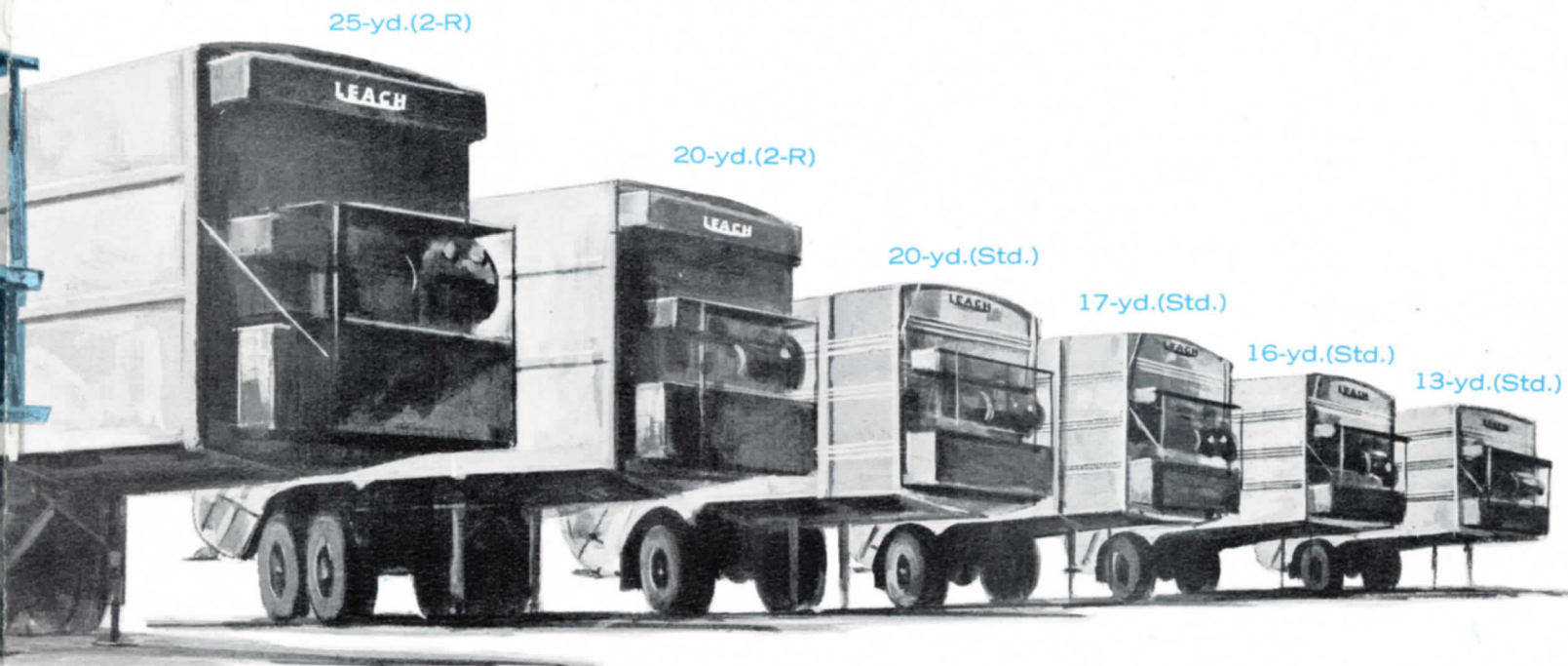
AMERICA'S MOST EFFICIENT REFUSE COLLECTION SYSTEMS

# ingenuity



7 models *for every application*

# *developed the* LEACH LINE *of* STATIONARY MOVABLE PACKERS



## LEACH COMPANY, OSHKOSH, WISCONSIN . . .

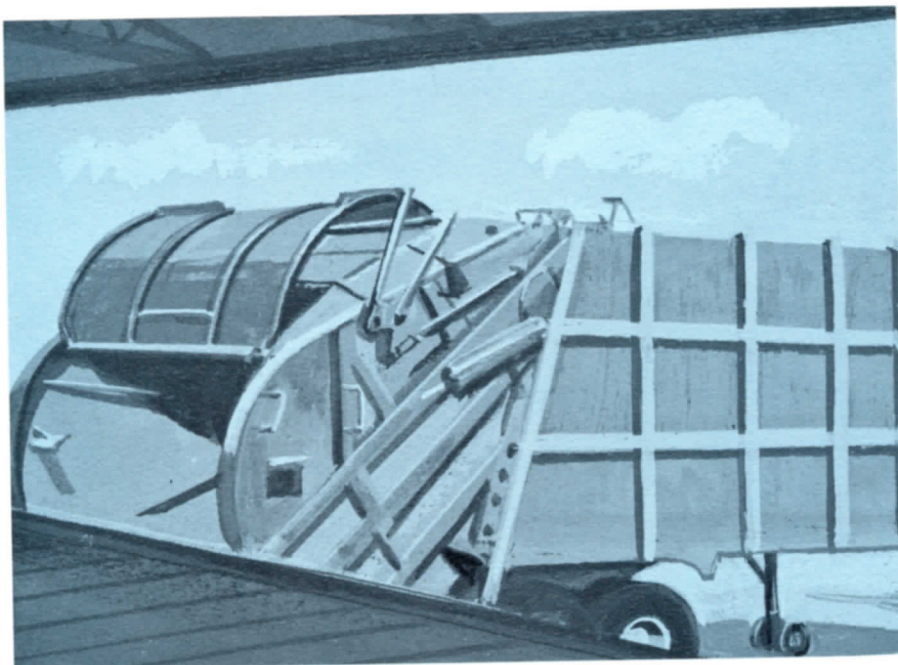
. . . Home of the **most accepted** line of refuse equipment in the industry, where "Quality" has never been sacrificed for any reason.

Here a new concept in stationary compactors has been created: a stationary packer that is "Movable" . . . available in 7 sizes . . . 13 cubic yard all the way up to the superlative 31-yd. 2-R . . . all products of Leach practical research, design, engineering, and manufacture.

# ingenuity

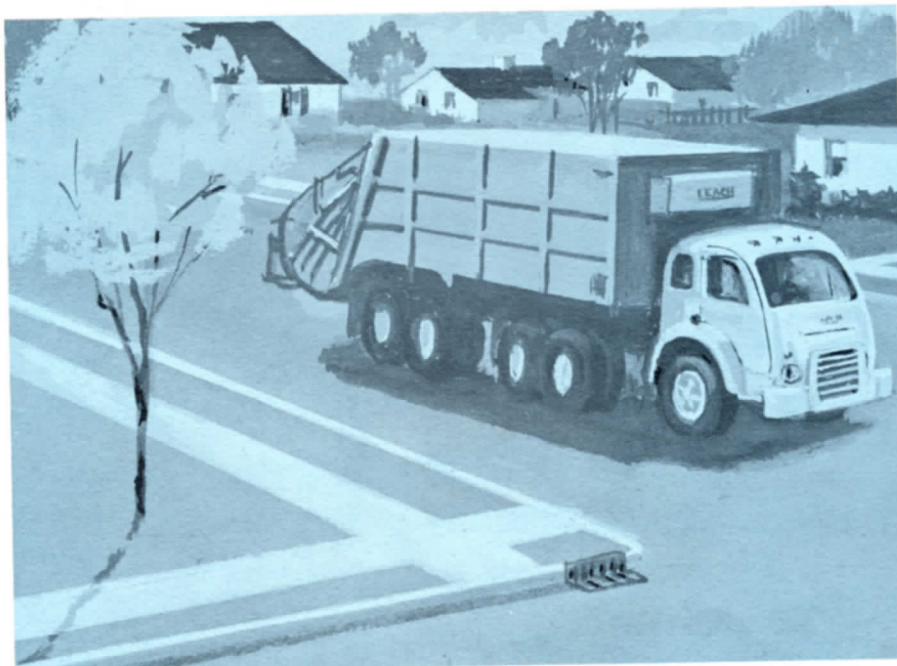
## LEACH STATIONARY PACKER

... Here it is at dockside with truck unit detached thus creating three major advantages: **One**—with Leach Stationary Packer, no costly dock installation is required. **Two**—Dock area is freed up for other uses when Leach Stationary Packer is not dockside. **Three**—when Packer is at dockside, truck tractor is available for other stationary packers, or other uses.



## LEACH MOVABLE PACKER

Here Leach Packer has been attached to truck unit and is servicing a residential route. Versatility of Leach unit thus is at a very high level. The unit can be effectively put to multiple uses . . . household garbage routes . . . mixed container routes . . . all commercial . . . or as a stationary packer . . . any or all of these possibilities are present.



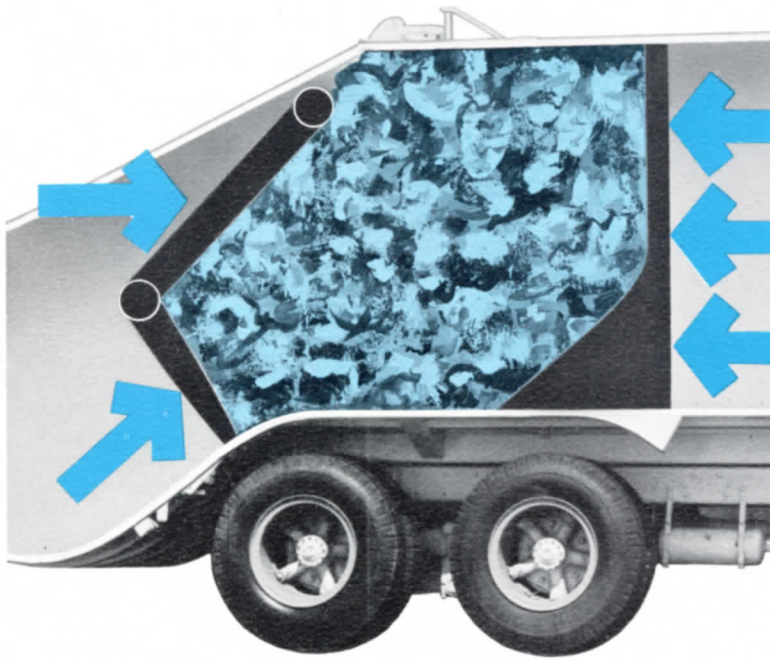
*combining* **2** *units in 1 ...*  
**a STATIONARY PACKER**  
*and a* **MOVABLE PACKER!**



**VERSATILITY ASSURES  
MAXIMUM PAY-LOADS**

Illustrative diagram of the adaptable Leach Stationary (movable) Packer. Stop 1, packer is dockside serving exclusively as a Stationary Packer. In the rest of route plan, Movable Packer proceeds to several container stops, then with full load, goes to disposal site to dump load.

# design ingenuity

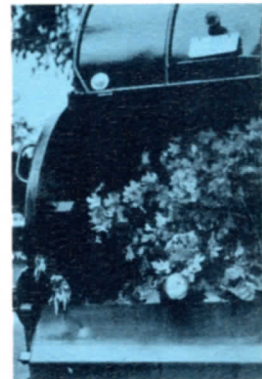
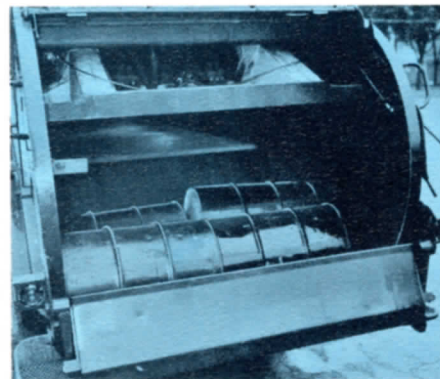
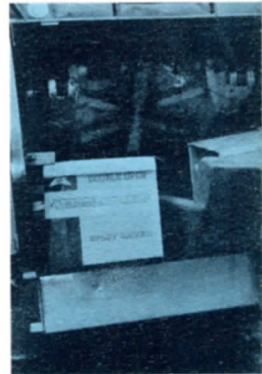


## EXCEPTIONAL COMPACTIBILITY

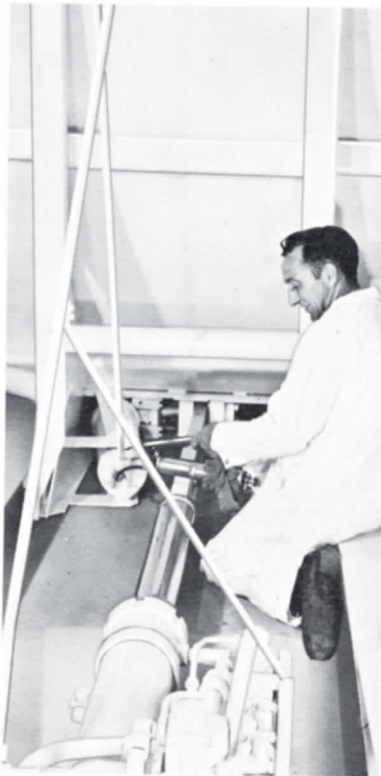
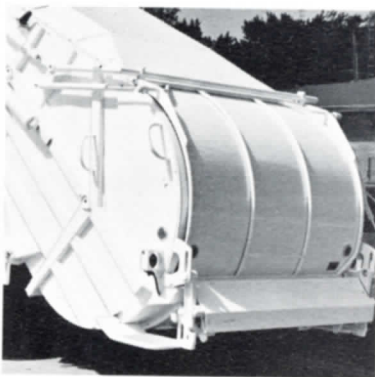
Shown here a cutaway drawing of LEACH 2-R and its Triple-Action Compaction Principle — **unmatched** in the industry . . . up to 1,000 pounds pressure (and more) per cubic yard . . . with trouble-free performance endorsed by the nation's top contractors and municipalities!

## TAKES ALL TYPES OF REFUSE . . .

. . . As illustrated in the jumbo 2-yard (2-R) hopper. **Jam-resisting**, this hopper and its counterpart (standard) unit has earned testimonial upon testimonial from contractors, industry, and governmental users . . . the **Number One** hopper design in the industry.



# *permits* LEACH **STATIONARY MOVABLE PACKERS** *to employ tested and proven* LEACH *Quality Features*



## **OPERATOR-DESIGNED . . . LOW MAINTENANCE**

Important considerations, these . . . and thoroughly tested in the field by famous LEACH PACKMASTERS all over the nation. Safe, single lever control . . . safety door to close-off hopper when packing blade is actuated . . . and easy accessibility for maintenance . . . a result of Leach practical engineering design.

**TRADITIONAL LEACH QUALITY**—always assured. No manufacturer of refuse equipment has a more respected reputation and this applies to all LEACH products including its line of Stationary Packers.

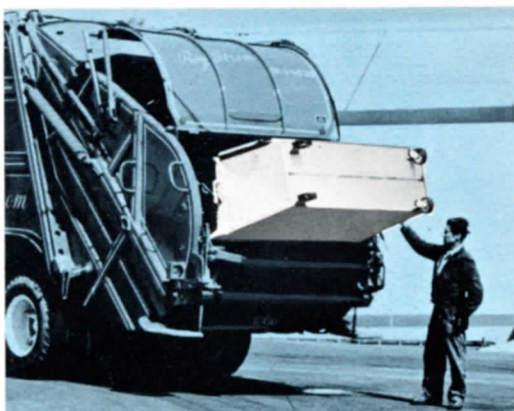


**versatile**

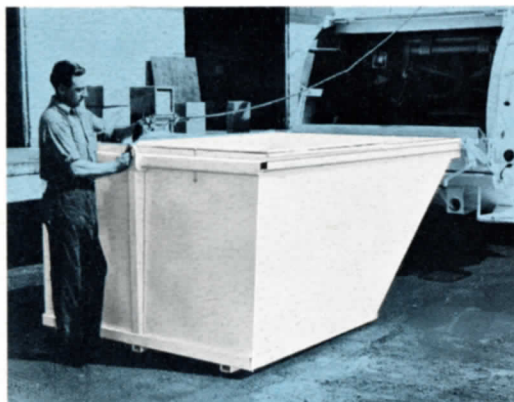
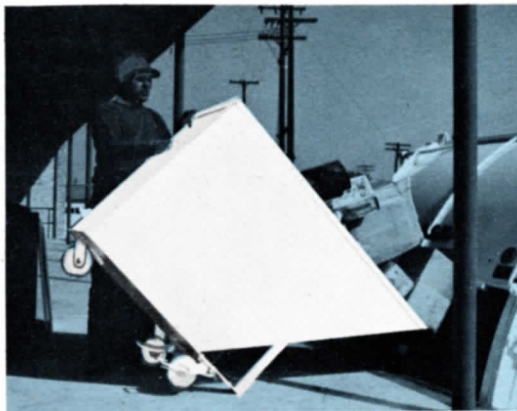
# ingenuity

**All LEACH STATIONARY MOVABLE PACKERS  
adapt to all LEACH Container Systems!**

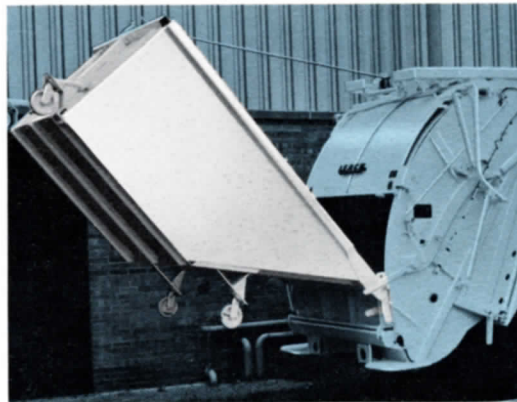
The Leach one-yard container, used in thousands of applications, private or municipal.



Leach Dock Unloader . . . both direct-dump into hopper — or the attachable dock unloader for automatic dumping.



With the larger size containers . . . 3, 4, 5, 6, and 8 cubic yard sizes . . .



. . . as shown here with the rugged — heavy-duty Leach winch-type hoist, capable of lifting jumbo size container weights.

C. N. WOOD CO., INC.  
570 ARSENAL STREET  
WATERTOWN, MASS. 02172  
923-0200 — 923-0201

ClassicRefuseTrucks.com Library

Sanitation is our only business



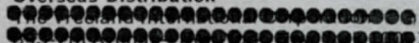
**ELGIN LEACH CORPORATION**



**SANITATION HEADQUARTERS**

222 West Adams Street • Chicago, Illinois 60606

Overseas Distribution



**ELGIN LEACH INTERNATIONAL, INC.**  
222 West Adams Street, Chicago, Illinois 60606

Printed in U.S.A.