

LOAD-MASTER®

A.P. (OSCAR) KERCHOWSKAS
SALES REPRESENTATIVE
RES. SCRANTON (717) 347-2104

STEPHENSON EQUIPMENT, INC.
563 E. NORTHAMPTON ST.
WILKES BARRE, PA. 18702
PH: (717) 825-4574



RUGGED, DEPENDABLE, RELIABLE!
The PAYLOAD tells the story!



by **CITY TANK CORPORATION**
STEPHENSON EQUIPMENT, INC.

Route 322 — Hershey Highway CULPEPER, VIRGINIA
P. O. Box 4201
HARRISBURG, PA. 17111
Telephone (717) 564-3434



Designed and built for your needs NOW
and for YEARS to come!

Super 25 cubic yard body with super
2-1/2 yard loading hopper!

Proven high-density compaction!

Body box sections integrally formed from
high-tensile steel, and overlapped for durable
strength!

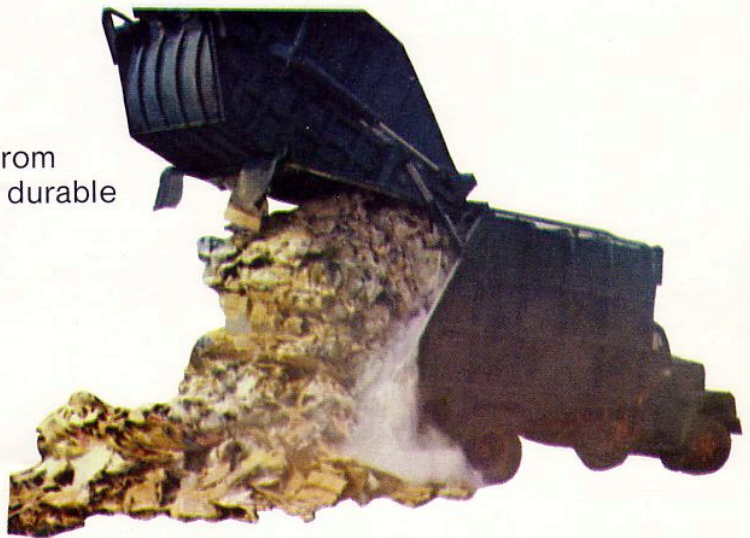
Deep box-member under body
reinforcements!

Knee construction packer panel,
full welded for greater strength!

Rolled, plow-design of ejector panel
allows greater pay-load compaction,
and swift, continuous load ejection!

Built tough for tough routes.

Truck or trailer mount!



M425



LOAD-MASTER®

FLAGSHIP of the FLEET

Whether you maintain a fleet, or operate a single refuse packer, the **LOAD-MASTER®** LM 425 body is designed and built with the future, as well as the present, in mind. This super capacity 25 yarder IS the BEST for all-around durability and long life. We build it to MAUL the bulkiest of refuse — whether household or containerized, commercial and industrial waste.

LOAD-MASTER® LM 425 refuse packer can be equipped with a fast, efficient, and positive dumping container system capable of handling multiple sizes rear-loading containers — the over-head double acting cylinder* gives you a line pull well in excess of 12,000 lbs!

For additional information turn to page 7.

* Denotes models 26A and 160A.



LM 100



LOAD-MASTER®



The day-to-day dependability designed into our **LOAD-MASTER®** LM 100 Series refuse body has proven itself over years of operation to be simple to maintain and therefore low in operational cost. Simple design with rugged construction! Available in body capacities of 20 and 25 cubic yards, the **LOAD-MASTER®** models LM 120 and LM 125 features include: Easy, one-rod manual control to activate the hydraulic packing action. All hydraulic packing cylinders located outside of waste areas. Ram-rod ejector panel can unload compacted refuse with trouble-free ease. Chrome-plated piston rods and plungers for longer life. Big, 2-1/2 yard loading hopper can accommodate rear loading containers.

See page 7.

LM300

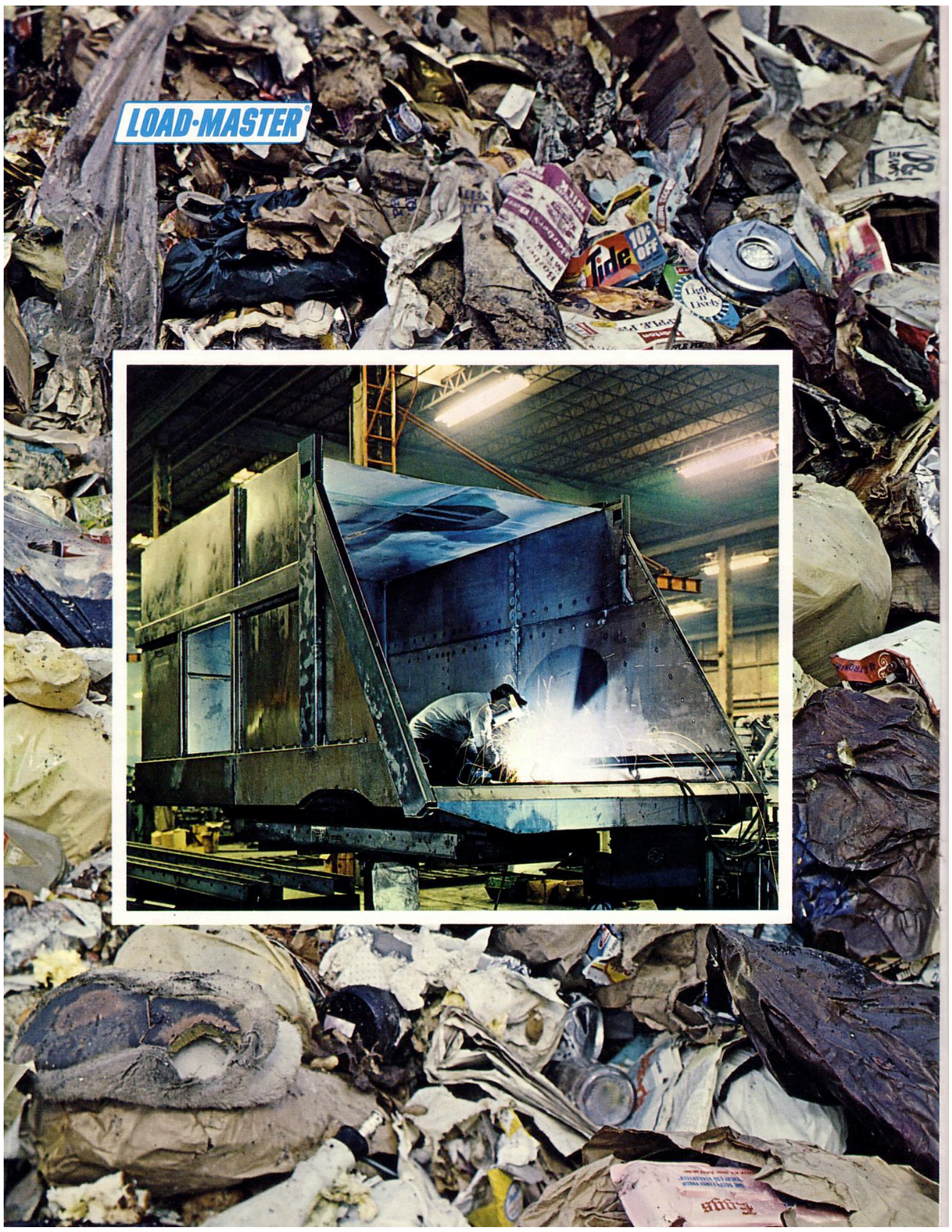


LOAD-MASTER®



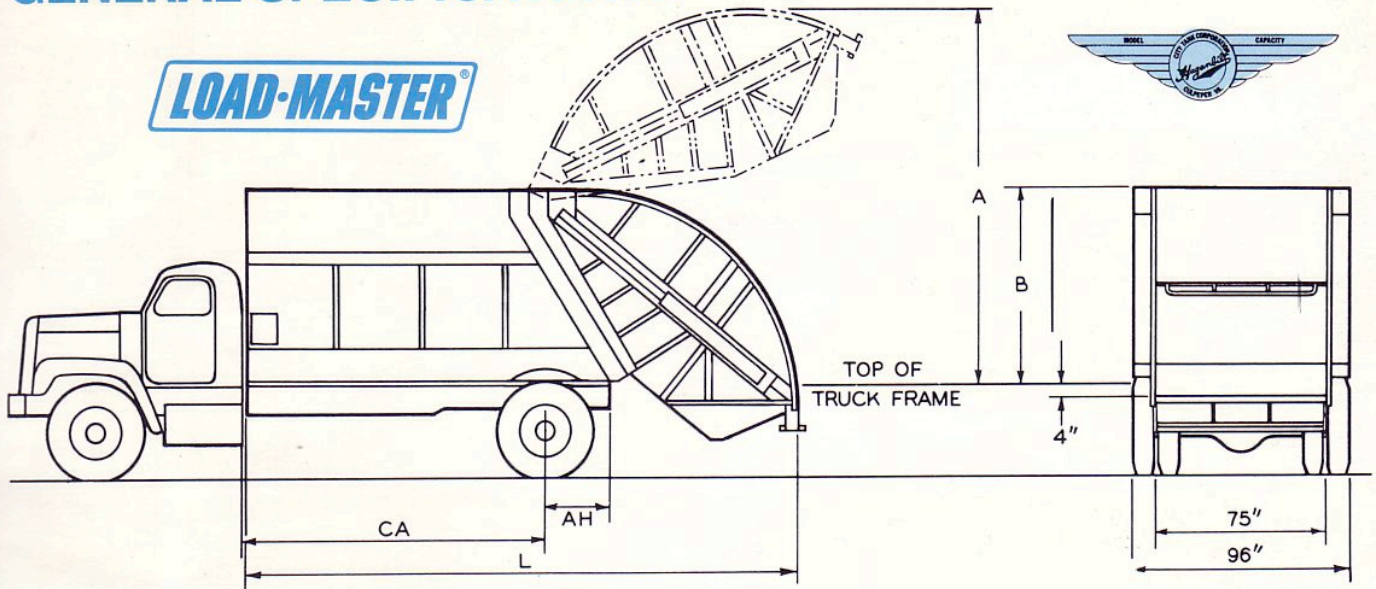
The **LOAD-MASTER®** LM 300 Series is designed to offer the contractor or municipality the same **DEPENDABLE, RUGGED** service of its big brothers at less initial cost; yet with the proven features of the **LOAD-MASTER®** equipment engineering and production know-how! Available in body capacities of 16, 18, and 20 cubic yards. The tailgate lifts high and out of way, and the fully compacted load is quickly and completely ejected with the steady and continuous ram-rod action of the complete **LOAD-MASTER®** line!
See page 7.

LOAD-MASTER®



GENERAL SPECIFICATIONS:

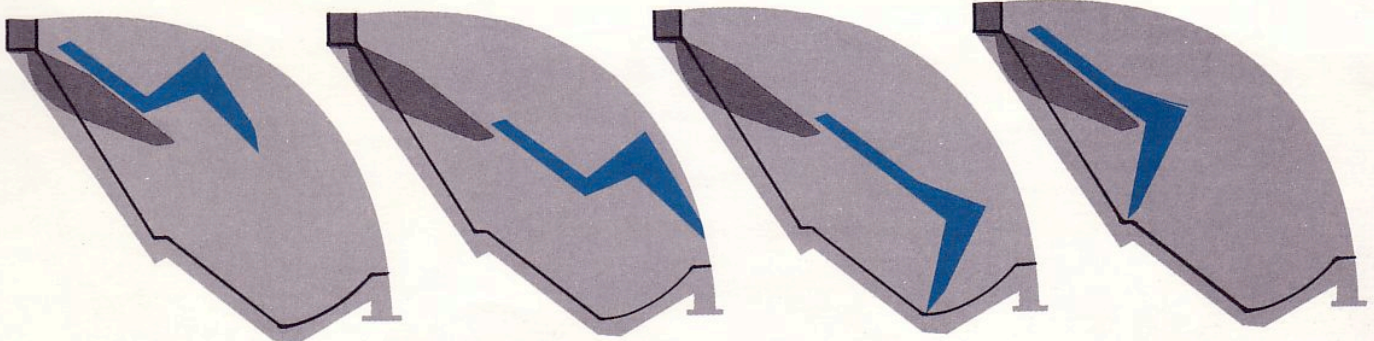
LOAD-MASTER®



LOAD-MASTER MODEL	CAPACITY CU. YDS.	A INS.	B INS.	CA INS.	AH INS.	L INS.	WT. LBS. APPROX.	HOPPER CAPACITY CU. YDS. LOADED
LM-316	16	143	83	106	36	201	10,100	2
LM-318	18	143	83	128	38	221	10,700	2
LM-320	20	143	83	140	36	234	11,300	2
LM-120	20	166	89	140	36	248	11,800	2-1/2
LM-120T	20	166	89	145*	26	248	11,800	2-1/2
LM-125T	25	166	89	169*	36	282	12,500	2-1/2
LM-425T	25	193	102	169*	25	275	15,250	2-1/2

*For Tandem Chassis CA Dimension is to Center Line of Rearmost Wheel

MOVEMENT OF PANEL



Operator starts packing cycle. Packing plate automatically moves upward.

Packing plate moves to rear over top of fully loaded hopper.

Packing plate clears refuse from hopper.

Tremendous force of packing plate compresses materials from hopper into body.

LOAD-MASTER®

CONTAINER HANDLING DEVICES

The most efficient rear-loader container handling system available! Quick, smooth, positive, efficient — simple to maintain. Works totally independent of packing cycle. Single overhead double-acting hydraulic cylinder, with capabilities to fit your day-to-day needs. Model ranges as follows:

Model 12A** — Small 1-to-3 yard containers

Model 26A* — Large 2-to-6 yard containers

Model 160A** — The complete range

Models 26A and 160A give a line pull in excess of 12,000 lbs.

*Patented

**Patented and additional patent pending

Contact your City Tank Distributor for other available optional items for your **LOAD-MASTER®** units.



CITY TANK CORPORATION

CULPEPER, VIRGINIA



These are the plant facilities in Culpepper, Va. where **LOAD-MASTER®** refuse bodies are engineered and manufactured.

