

New batch-type refuse body

For 1964, City Tank Corporation, a division of Hagan Industries, has unveiled a rear-end loading batch packer refuse body, which it calls LOAD-MASTER. The new body handles normal refuse and large bulky trash materials and is available in 16-, 18-, 20- and 25-cubic yard capacities. It is designed as a standard unit yet its rear hopper and hydraulically-operated packer plate are so engineered that the hopper easily holds 2 cubic yards of refuse when fully loaded.

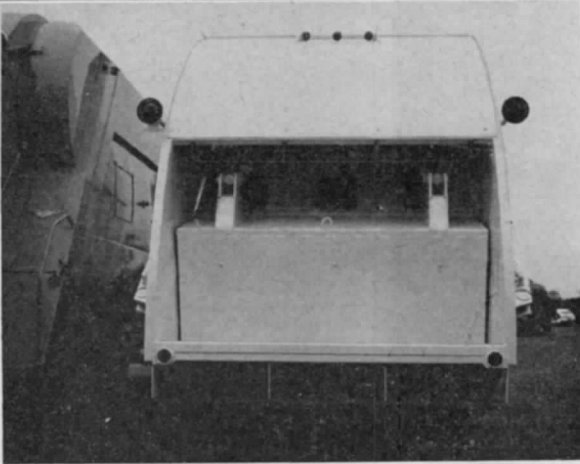
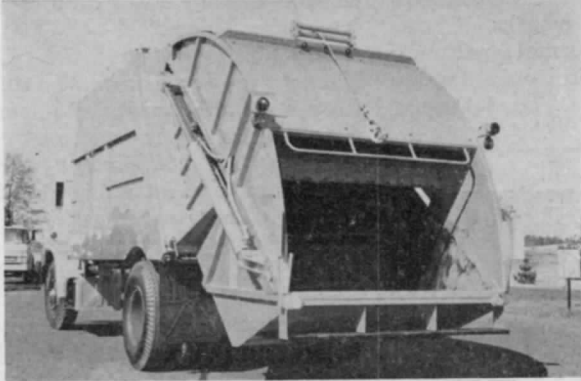
Several other engineering innovations have been incorporated in the LOAD-MASTER. The cylinder of the hydraulic systems are located outside the waste areas, preventing cylinder or piston damage by dirt or corrosive waste materials. The ejector panel, featuring hydraulic ramrod action, is moulded into the body so that the panel runs along guide tracks with close tolerances. Thus, the panel is nonclogging and refuse is ejected with ease, no matter how tightly compacted in the body. The compaction plate is designed for maximum direct thrust and provides powerful and effective compaction of refuse materials.

The hopper opening to the refuse-carrying body digests large bulky objects. In test runs, oak packing cases, sofas, and 55-gallon heavy-duty steel drums were put into the hopper. The tremendous pressure of the packing panel and the large hopper opening allowed the LOAD-MASTER to consume such objects easily. Tests show the unit will handle hardwood lumber up to 8 x 12's, although this is not recommended by City Tank engineers.

Waste handlers are expected to welcome the simple one-rod control lever on the side of the LOAD-MASTER. One touch on the master lever starts the fast-packing cycle action which allows the hopper to be re-loaded immediately after the packing panel clears the loading sill. Packing movement can be stopped at any point in the cycle, and reversed if desired by moving the single control lever. The simplified control lever also provides an instant safety device if ever needed. There are only 25 grease lubrication points on the LOAD-MASTER.

(Continued on page 152)

Photos (from top to bottom) show the packing cycle of the new batch packer Load-Master: (1) Unit is in loading position; (2) packing panel is at height of its upward movement; (3) packing panel is at top of loading sill; (4) packing panel continues downward and forward to bottom hopper, and (5) continues forward and upward to compact refuse into body.



Purchasing News

(Continued from page 151)

City Tank asserts that the new unit is the most thoroughly pre-tested waste pickup unit ever introduced to the refuse industry. Company engineers have been designing and testing various components since 1961. The prototype Load-Master unit has been tested in regular sanitation service in large and small cities in the East and South for more than a year.

"For example, we made available

a prototype unit to a large eastern city, and asked the sanitation department to give it the most severe usage possible," said John G. Hagan, president.

"We literally asked them to tear this test unit apart. We put it on the toughest collection routes, and ran it practically on a continuous basis for several months. There were no large or small malfunctions of the unit. With only normal maintenance, the Load-Master

exceeded the strict engineering performance that had been predicted. Our experience indicates that this new unit out-performed, outpacked and outworked any batch packer we have used. The new Load-Master, teamed with the proven escalator-type Roto-Pac packer, appears to answer every kind of waste removal problem."

City Tank views the Load-Master as a team-mate to the Roto-Pac, the company's continuous-loading pick-up unit, and describes the combination as "the total team to meet all needs of the refuse collection industry." City Tank refuse containers in all sizes will fit both the Roto-Pac and the new Load-Master.

Demonstration units for the Load-Master are now in the field. Write to CITY TANK CORPORATION, CULPEPER, VA., for details and for specification sheets.

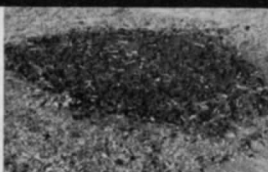
PROBLEM . . . SOLUTION . . . RESULT!



What's more unsightly than a dead tree stump in a lovely lawn? There was a time when removal meant days of laborious and expensive chopping, sawing and digging by a crew of men to remove a big stump like the one shown above.



And then came Vermeer, with a revolutionary new stump removal machine. Look how the machine's big, high-speed revolving cutting wheel has ripped half the stump to chips—as it moved back and forth across the stump.



Now see the difference! Stump has been removed. Hole has been filled with dirt and chips—ready for seed or sod. All accomplished in minutes by one man . . . and a Vermeer Pow-R Stump Cutter.

Here's the machine acclaimed by cities and tree service men everywhere for fast, low cost stump removal!



VERMEER'S Pow-R Stump Cutter

available in 5 models to fit every stump removal problem

WRITE FOR FREE DEMONSTRATION

Please send complete descriptive literature on your complete line of Pow-R Stump Cutters.

NAME.....

TITLE OR DEPT..... PHONE.....

ADDRESS.....

CITY..... STATE.....



VERMEER MFG. CO.

1563 West Washington • Pella, Iowa

You'll save thousands of dollars and man-hours annually with a Vermeer Pow-R Stump Cutter. There is a model to fit every need—to remove an occasional small stump . . . or hundreds of stumps every week! Thousands of Vermeer Pow-R Stump Cutters have been used extensively in cities and towns in every state . . . and in many land clearing, highway widening and construction projects. Praised by municipalities as a tremendous labor and money saver—and by tree service firms as an invaluable profit-maker! Simple 3-lever hydraulic control system lets one operator remove large stumps in minutes. No back breaking labor. It's the modern, economical way to remove stumps. Ruggedly built to give years of satisfactory service with minimum of low cost basic maintenance.

VERMEER . . . WORLD'S LARGEST STUMP CUTTER MANUFACTURER



Close-up view of the Load-Master single control lever at the rear of the batch packer unit. Touch of a master lever starts the packing cycle.



Rear view of the Load-Master refuse packer, with rear of unit raised and ramrod ejector panel at the full ejection position.

(See page 154 for more News)