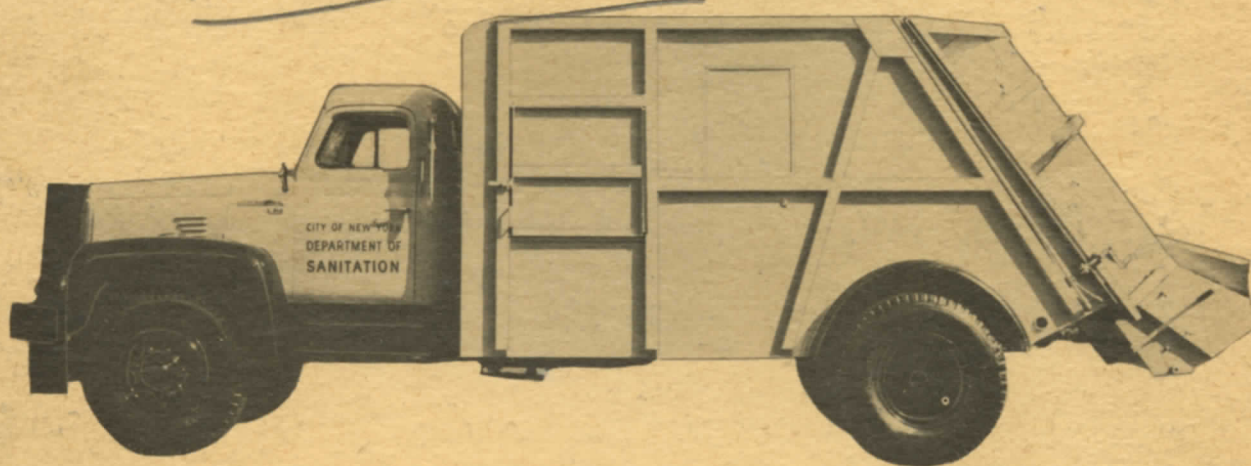


PARTS AND INSTRUCTION BOOK

for the

ROTO-PAC

Model 416 -



CITY TANK CORPORATION

CORONA, L. I.

TABLE OF CONTENTS

| | Fig. No. | Page No. |
|--|---------------|-------------|
| Operating Controls | 1-2 | 2-3 |
| Power Take-off Lever | 1 | 2 |
| Alternate Power Take-off | 2 | 3 |
| Tailgate Operating Lever | 1 | 2 |
| Alternate Tailgate Operating Lever | 3 | 4 |
| Body Operating Lever | 1 | 2 |
| Alternate Body Operating Lever | 3 | 4 |
| Tailgate Hold-Down Clamps. | 3 | 4 |
| Tailgate Safety Arms | 6 | 6 |
| Safety Buzzer. | 4 | 5 |
| | | |
| Operating Instructions | | 3-6 |
| To Engage Power Take-off | | 3 |
| To Raise and Lower Tailgate. | | 4 |
| To Raise and Lower Body. | | 4 |
| To Operate Escalator and Packer for Loading. | | 5 |
| Packing Operation. | | 6 |
| Blockage of Escalator or Packer Plate. | | 6 |
| | | |
| Maintenance. | | 6 |
| | | |
| Lubrication Chart. | | 8 |
| | | |
| Drawing of Conveyor and Packer Drive Mechanism | | 9 |
| | | |
| Drawing of Tailgate. | | 10-11 |
| | | |
| Drawing of Chassis Piping. | | 12-13-14 |
| | | |
| Parts List | | 15 |
| Chassis Preparation. | | 16-17-18 |
| Body Assembly. | | 19-20-21 |
| Tailgate Assembly. | | 21-22-23-24 |
| Hopper | | 24 |

OPERATING INSTRUCTIONS

OPERATING CONTROLS - The operator should familiarize himself with the location and function of each control lever before operating the Roto-Pac.

The levers located in the cab are as follows:

- (a) The Power Take-Off engagement knob as shown in Fig. 1.
- * (b) Tailgate Operating Lever (raise and lower) as shown in Fig. 1.
- * (c) Body Operating Lever (raise and lower) as shown in Fig. 1.

Note: Due to differences in design it is sometimes necessary to install the operating levers in other locations.

- (a) The Power Take-Off engagement lever located in the cab as shown in Fig. 2 (including alternate).
- (b) Tailgate Operating Lever (raise and lower) as shown in Fig. 3.
- (c) Body Operating Lever (raise and lower) as shown in Fig. 3.

In addition to the above operating levers there are the hold down clamps for the tailgate, Fig. 3, the safety arms Fig. 6, the safety buzzer, Fig. 4).

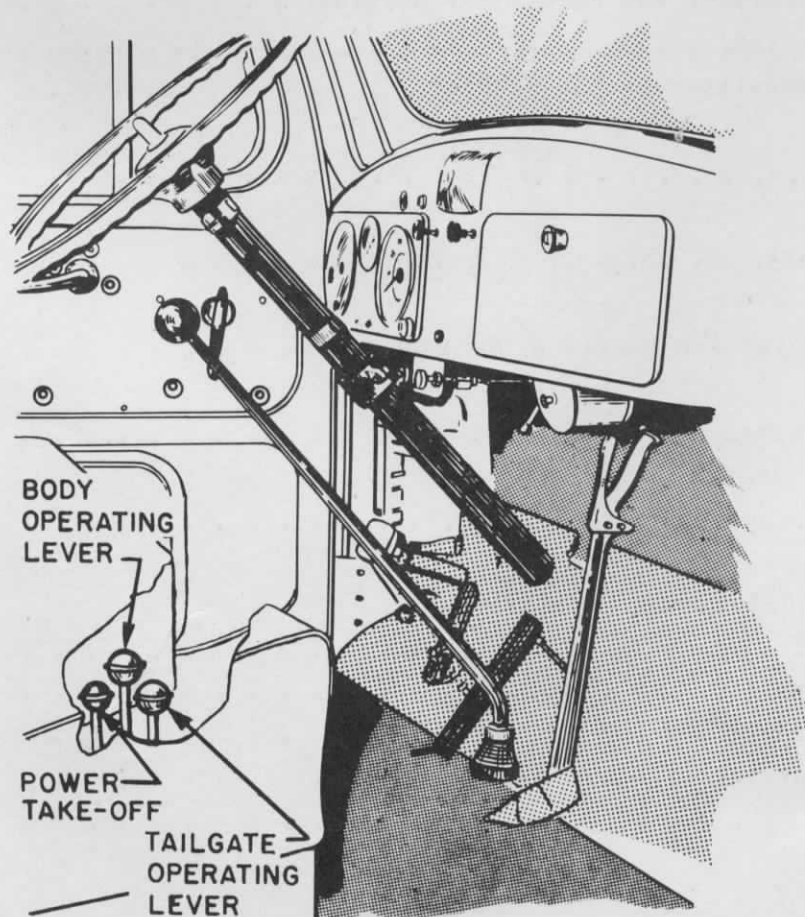


FIG. 1

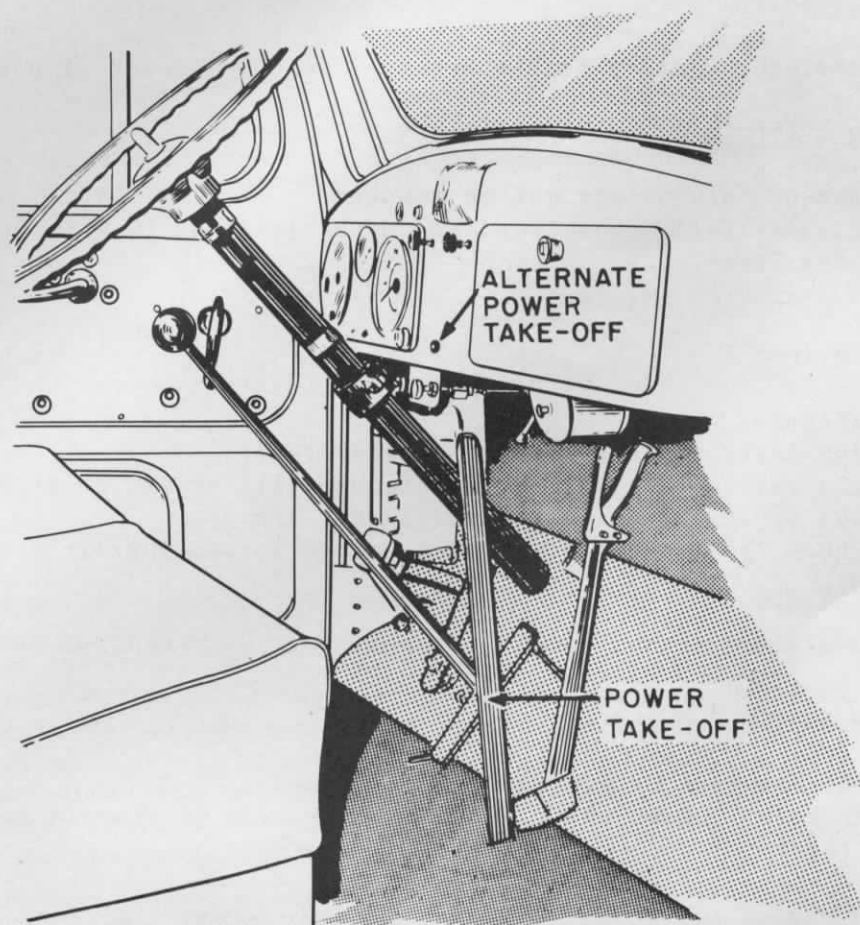


FIG. 2

TO ENGAGE POWER TAKE-OFF (Fig. 1)

- a. Press down clutch pedal.
- b. Push Power Take-Off control knob to engage Power Take-Off (on dash board).
- c. Release clutch pedal.
- d. To disengage pull control knob out after depressing clutch pedal.

Note: Some models have the Power Take-Off on the floorboard (Fig. 2)

TO RAISE TAILGATE

- a. Release hold down clamps securing tailgate to the body (Fig. 1).
- b. Engage Power Take-Off (Fig. 1).
- c. Place tailgate lever in up position. When tailgate is fully raised it will automatically stop (Figs. 1 & 3).
- d. Release tailgate lever (Tailgate lever will automatically return to neutral position).

Note: Escalator control handle on hopper must be in neutral position.

TO LOWER TAILGATE

- a. Power Take-Off may or may not be engaged.
- b. Hold tailgate lever in down position until tailgate is down and then release the lever.

TO RAISE BODY

- a. Raise tailgate.
- b. Place body lever in up position (outside lever). When fully raised body will stop automatically or can be stopped at any height by releasing body lever (Figs. 1 & 3).
- c. Release body lever (Body lever will return automatically to neutral position).

Note: Escalator control handle on hopper must be in neutral position.

TO LOWER BODY

- a. Power Take-Off must be engaged.
- b. Hold body lever in down position until body sits on chassis and then release lever.

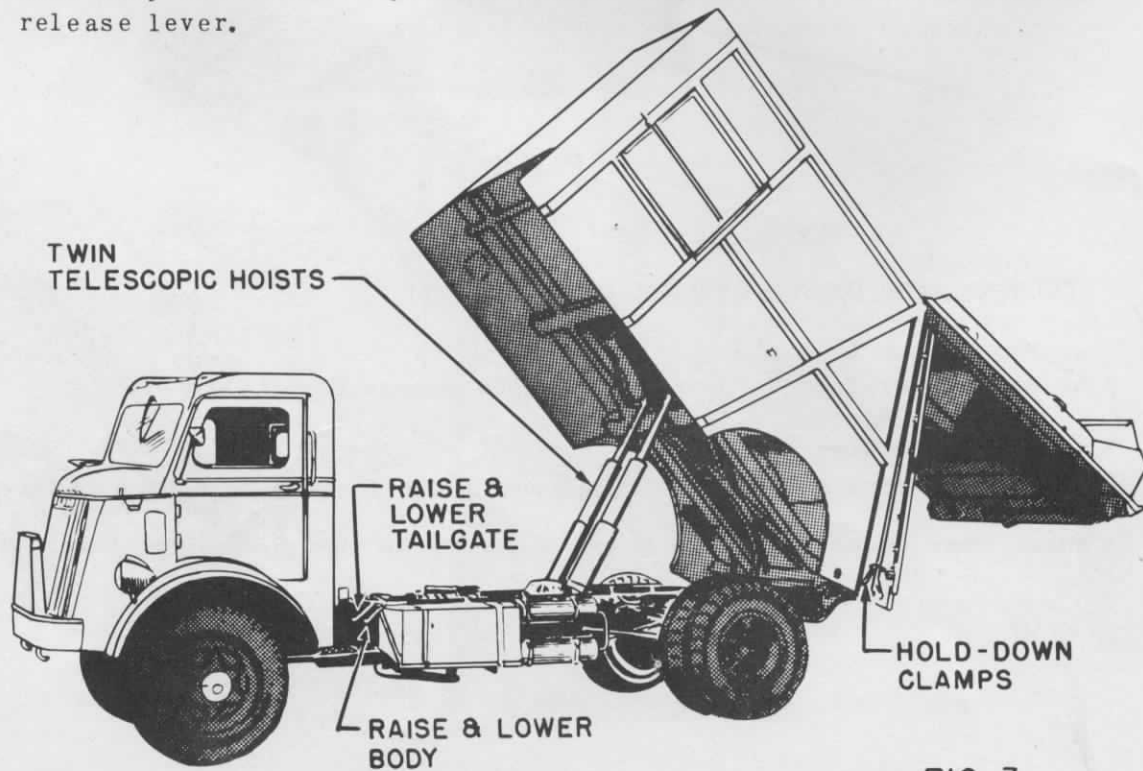
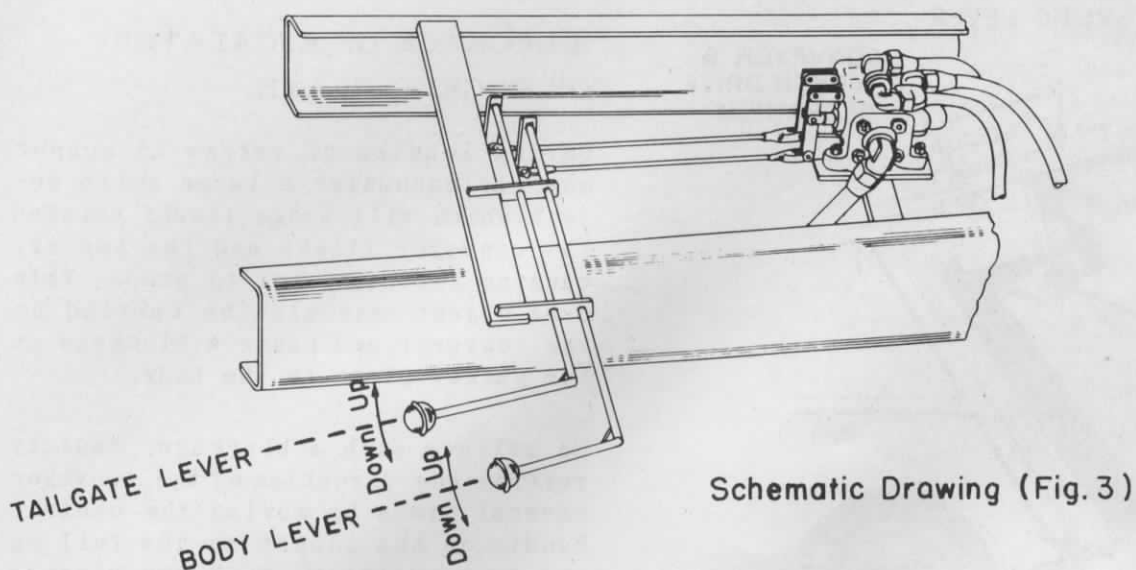


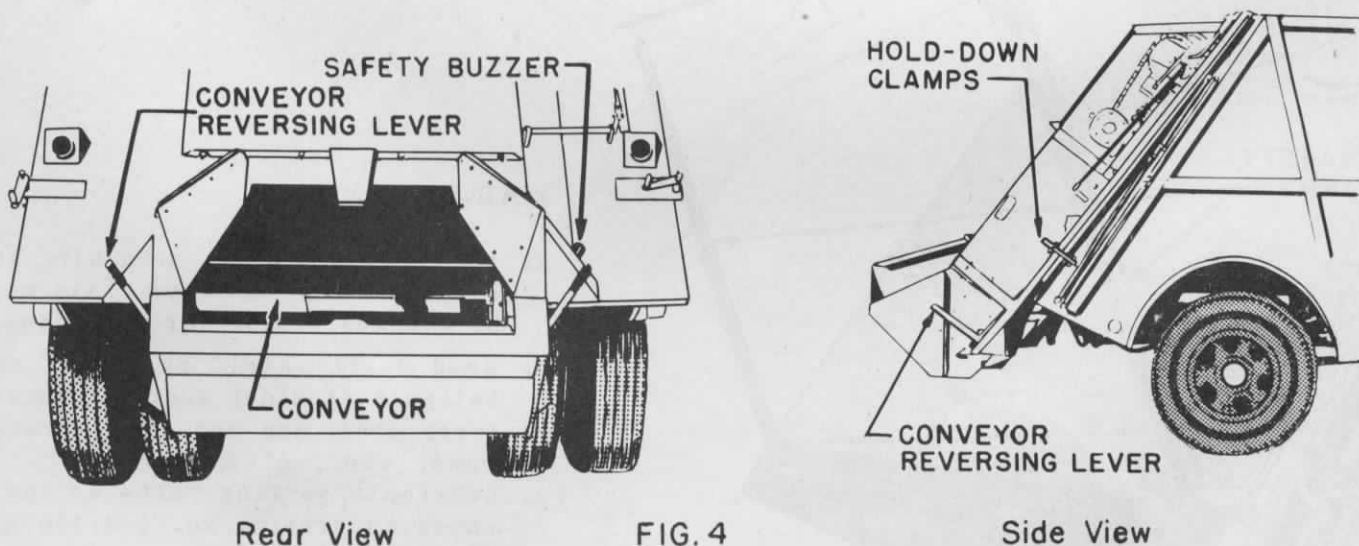
FIG. 3



TO OPERATE ESCALATOR AND PACKER FOR LOADING.

- a. Engage Power Take-Off.
 - b. Set hand throttle so that engine is running at approximately 750 RPM so that approximately 35 to 40 escalator flights per minute are obtained.
 - c. Engage escalator mechanism by moving handle at hopper in the down position (Fig. 4).
- Unit is now ready for loading refuse.

Note: Par. B. If unit is equipped with automatic hydraulic throttle no setting should be made with hand throttle.



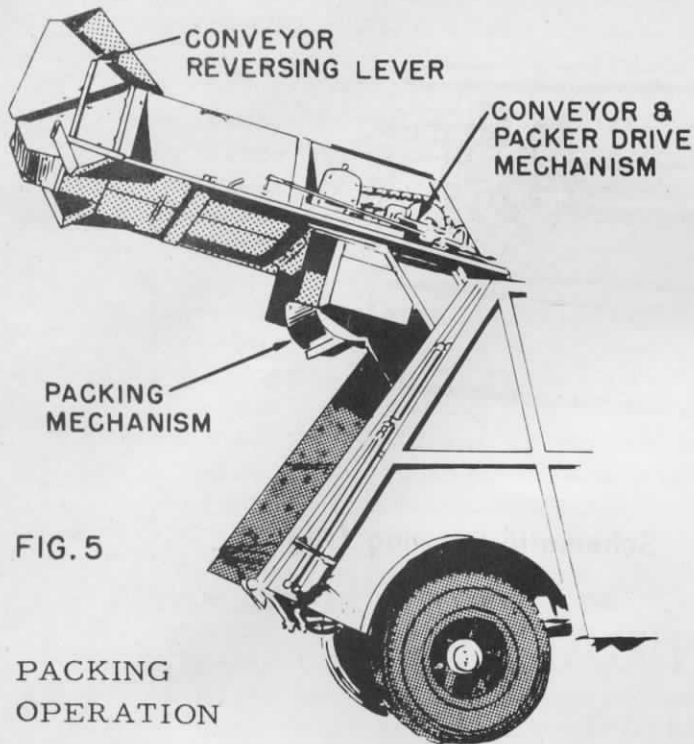


FIG. 5

PACKING OPERATION

When the body is approximately two-thirds full, the packer plate (see Fig. 5) inside the body will begin to compress the refuse within the body. At this point it will be necessary to adjust the hand throttle so that the engine speed is equivalent to approximately one thousand R.P.M. or equivalent to approximately fifty escalator flights per minute with no refuse in the body.

Note: Some models are equipped with a hydraulic throttle control which automatically takes care of the engine speed.

BLOCKAGE OF ESCALATOR OR PACKER PLATE

During loading of refuse in hopper one may encounter a large solid object which will wedge itself between the conveyor flight and the hopper, causing the escalator to stop. This same object may also be carried up the conveyor and cause a blockage at the packer plate in the body.

To relieve such a blockage, rapidly reverse the direction of the conveyor several times by moving the control handle on the hopper to its full up and down position. When the block is broken, proceed with loading.

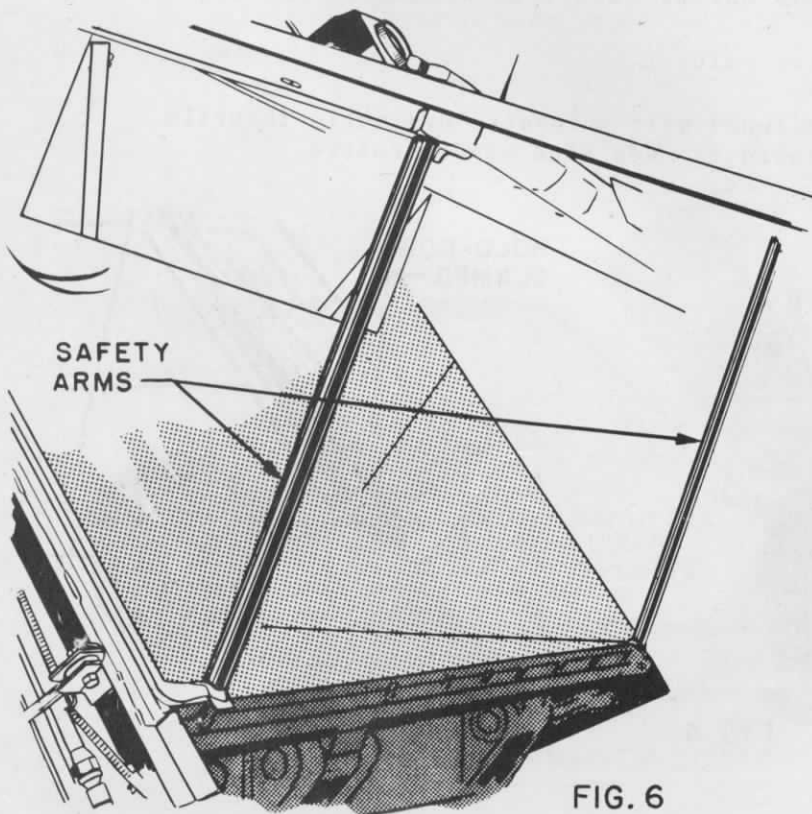


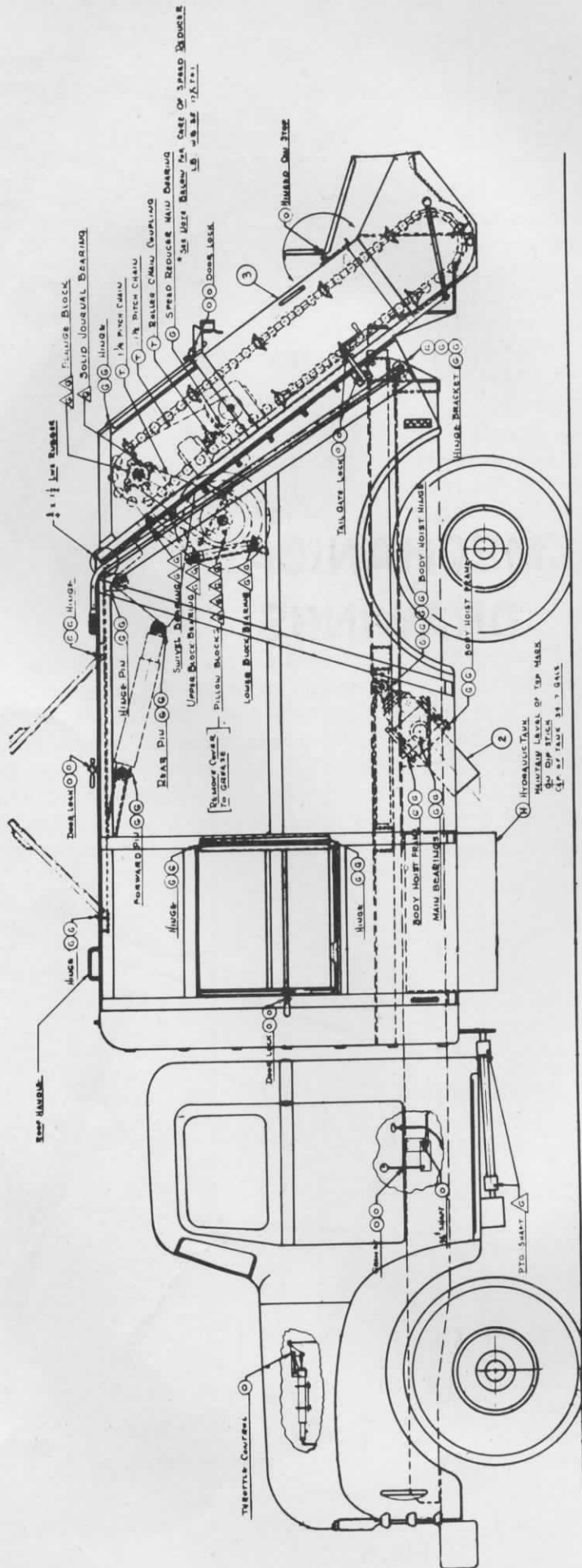
FIG. 6

MAINTENANCE

- a. All nuts and bolts attaching the flights to the conveyor chain must be checked weekly for tightness.
- b. Head shaft shield at top of the tailgate (inside) must be checked every other day and wire, rags, rope, etc., cleaned out.
- c. Lubricate working parts as indicated on drawing No. 1-A-106 attached. (Fig. 7)

**MECHANICAL
DRAWINGS**

LUBRICATION CHART



| SYMBOL | |
|-------------------|-------------------|
| ○ | MONTHLY |
| △ | WEEKLY |
| TYPE OF LUBRICANT | |
| G | GREASE |
| O | SAE 20 OIL |
| T | SAE 220 HYDRAULIC |
| H | SAE 10 HYD. FLUID |

4 SPEED REDUCER CASE.
LUBRICANT SHOULD BE CHANGED AFTER 10 1/2 HRS.
OF OPERATION - DRAIN & FILL.
2 SP LUBRICANT CAN BE USED FOR 600 HRS.
AFTER 2 SP CHANGE IF IS QUANTIFIABLE IS REMAIN
THE LUBRICANT ABOUT EVERY 1000 HRS.

LUBRICATING TEMPERATURE RANGE

| | | | |
|----------|--------|---------|----------|
| Temp | 0°-40° | 40°-90° | 90°-120° |
| AGMA Lub | LA 2 | LA 7 | LA 6 |

FIG. 7

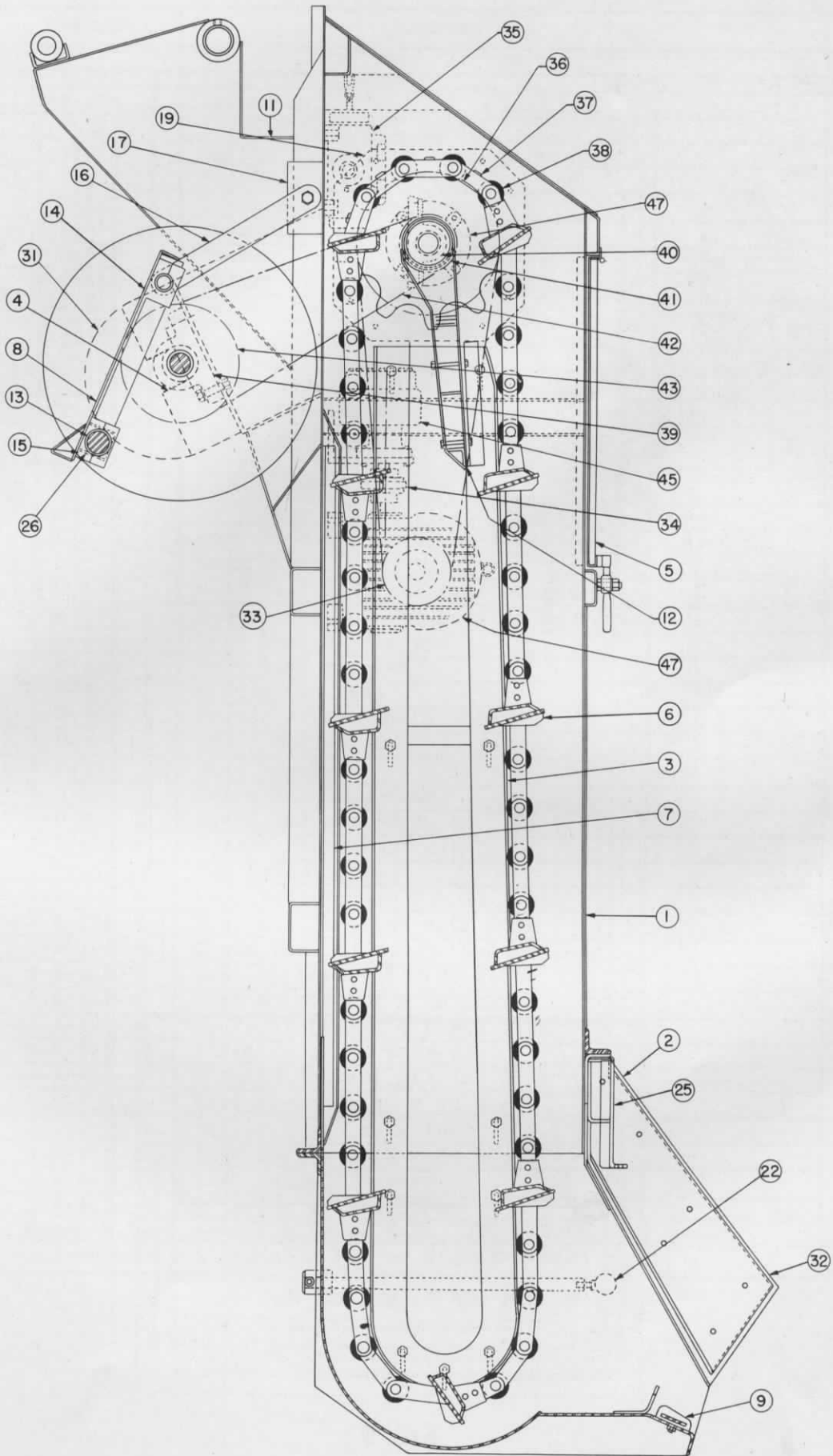


FIG. 8

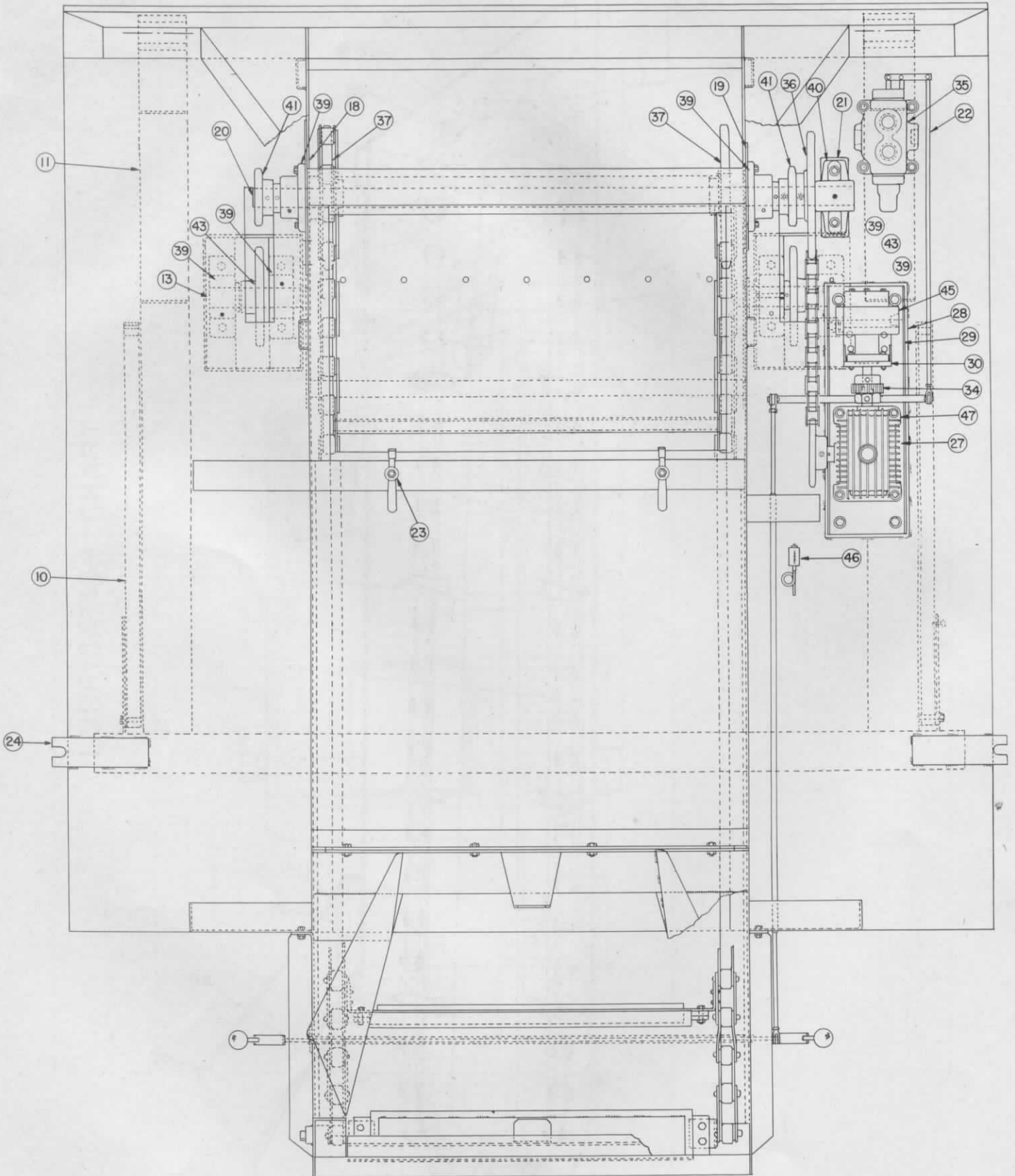


FIG. 9

| Item | Part No. | Description | Req' d. |
|------|------------|---|--------------------|
| 1 | 3-A-102 | Tail Gate Assembly | 1 |
| 2 | 3-B-206 | Hopper | 1 |
| 3 | 3-B-207 | Adjustable Chain Guide | 2 (R&L) |
| 4 | 3-C-315 | Pillow Block Disc Support Bracket | 2 (R&L) |
| 5 | 3-C-304 | Head Shaft Inspection Door | 1 |
| 6 | 3-C-305 | Fabricated Flight | 11 |
| 7 | 3-C-306 | Wear Plate | 1 |
| 8 | 3-C-307 | Pusher Plate | 1 |
| 9 | 3-C-308 | Hopper Sill Pad | 1 |
| 10 | 3-D-407 | Safety Arms | 2 (R&L) |
| 11 | 3-D-408 | Tail Gate Hinge Bracket | 2 |
| 12 | 3-C-317 | Wiper Shield | 1 |
| 13 | 3-D-410 | Disc Ass'y. | 1 |
| 14 | 3-D-411 | Upper Bearing Block (Pusher Plate) | 2 |
| 15 | 3-D-412 | Lower Bearing Block (Pusher Plate) | 2 |
| 16 | 3-D-413 | Pusher Arm Ass'y. | 1 |
| 17 | 3-D-414 | Pusher Arm Swivel | 2 (R&L) |
| 18 | 3-D-415 | Tail Gate Flange Block Support (Left Hand) | 1 |
| 19 | 3-D-416 | Tail Gate Flange Block Support (Right Hand) | 1 |
| 20 | 3-D-417 | Head Shaft | 1 |
| 21 | 3-D-418 | Head Shaft Journal Bearing Bracket | 1 |
| 22 | 3-B-217 | Remote Control for Loading Mechanism | 1 |
| 23 | 1-D-406 | Door Lock Handle Ass'y. | 2 |
| 24 | 3-D-438 | Tail Gate Bracket | 2 |
| 25 | 3-D-455 | Hinged Can Stop | 1 |
| 26 | 3-D-420 | Pusher Plate Shaft Cover | 1 |
| 27 | 3-D-424 | Speed Reducer & Drive Ass'y. | 1 |
| 28 | 3-D-425 | Base Plate | 1 |
| 29 | 3-D-426 | Drive Mounting Plate | 1 |
| 30 | 3-D-424-1 | Speed Reducer #W.B. 35 17½ to 1 | 1 |
| 31 | 3-D-424-9 | Roller Chain #120 1½ P. | 1 |
| 32 | 3-D-444 | Top Frame Lining | 1 (R&L) |
| 33 | 3-D-424-3 | Cast Sprocket 1½ P - 11 tooth | 1 |
| 34 | 3-D-424-4 | Flexible Coupling R.C. 5016 | 1 |
| 35 | 3-A-101-35 | 2-way Control Valve | 1 |
| 36 | 3-D-417-7 | Cast Sprocket 1½ P 26 tooth | 1 |
| 37 | 3-D-417-6 | Cast Sprocket 4 P 10 tooth | 2 |
| 38 | 3-A-101-38 | Conveyor Chain 4 P #5R 3154 | 1 R. H. 1 L. H. |
| 39 | 3-C-315-15 | 2" Pillow Block #P-2-432 | 4 |
| 40 | 3-A-101-40 | 2" Solid Journal Bearing | 1 |
| 41 | 3-D-417-5 | Cast Sprocket 1¼ P 12 tooth | 2 |
| 42 | 3-C-315-18 | Roller Chain R.C. 100 1¼ P. | 2 |
| 43 | 3-C-315-14 | Cast Sprocket 1¼ P 24 tooth | 2 |
| 44 | 3-D-435 | Disc Support Cover | 1 R. H. 1 L. H. |
| 45 | 3-A-101-45 | 3" Motor MD #211 BAEQ 30-8 | 1 |
| 46 | 3-A-103-79 | Pressure Gauge 0 to 1000 P.S.I. | 1 |
| 47 | 3-A-101-47 | 2" Flanged Pillow Block #F.-432 | 2 |

Box for Fig. 8 and Fig. 9

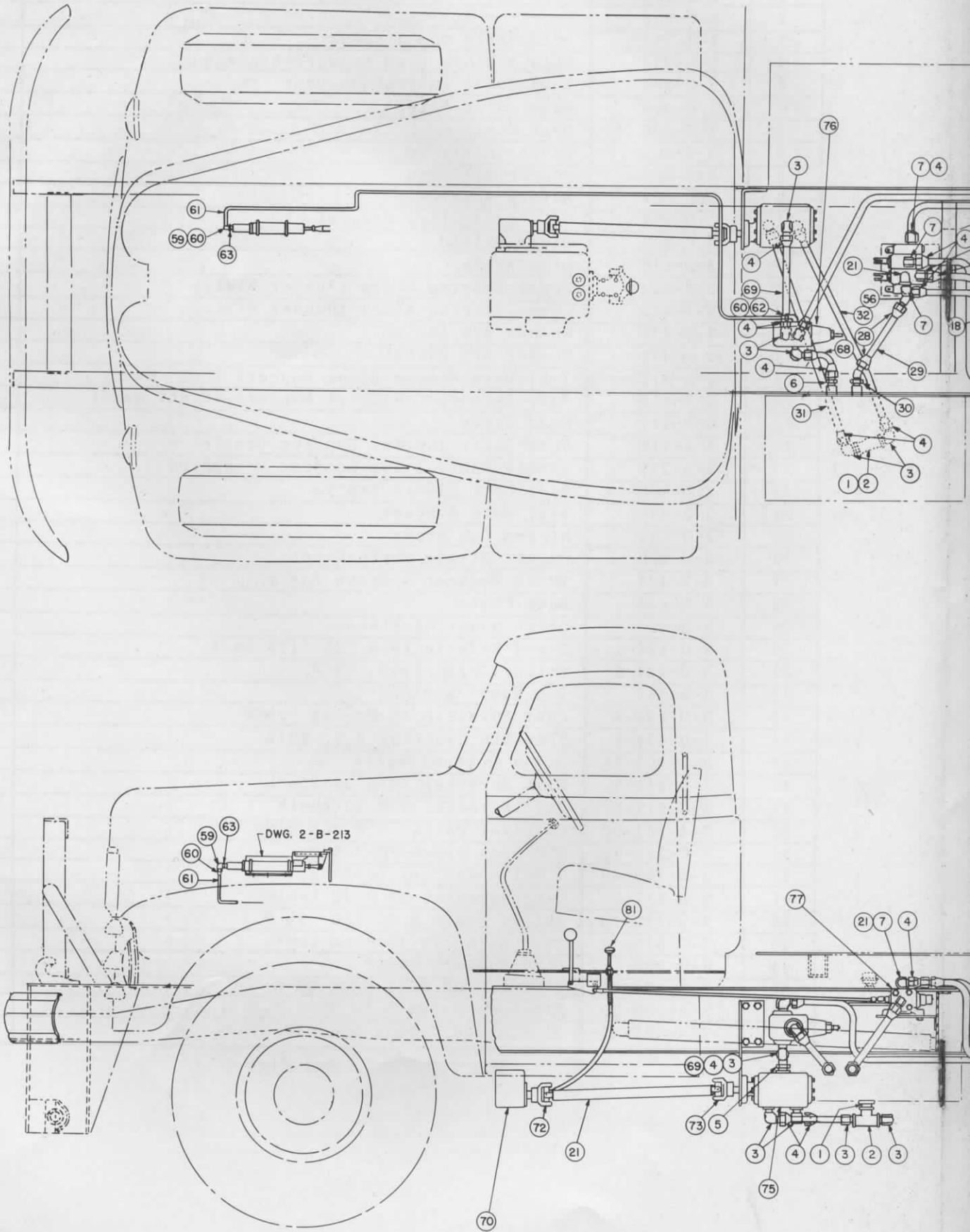
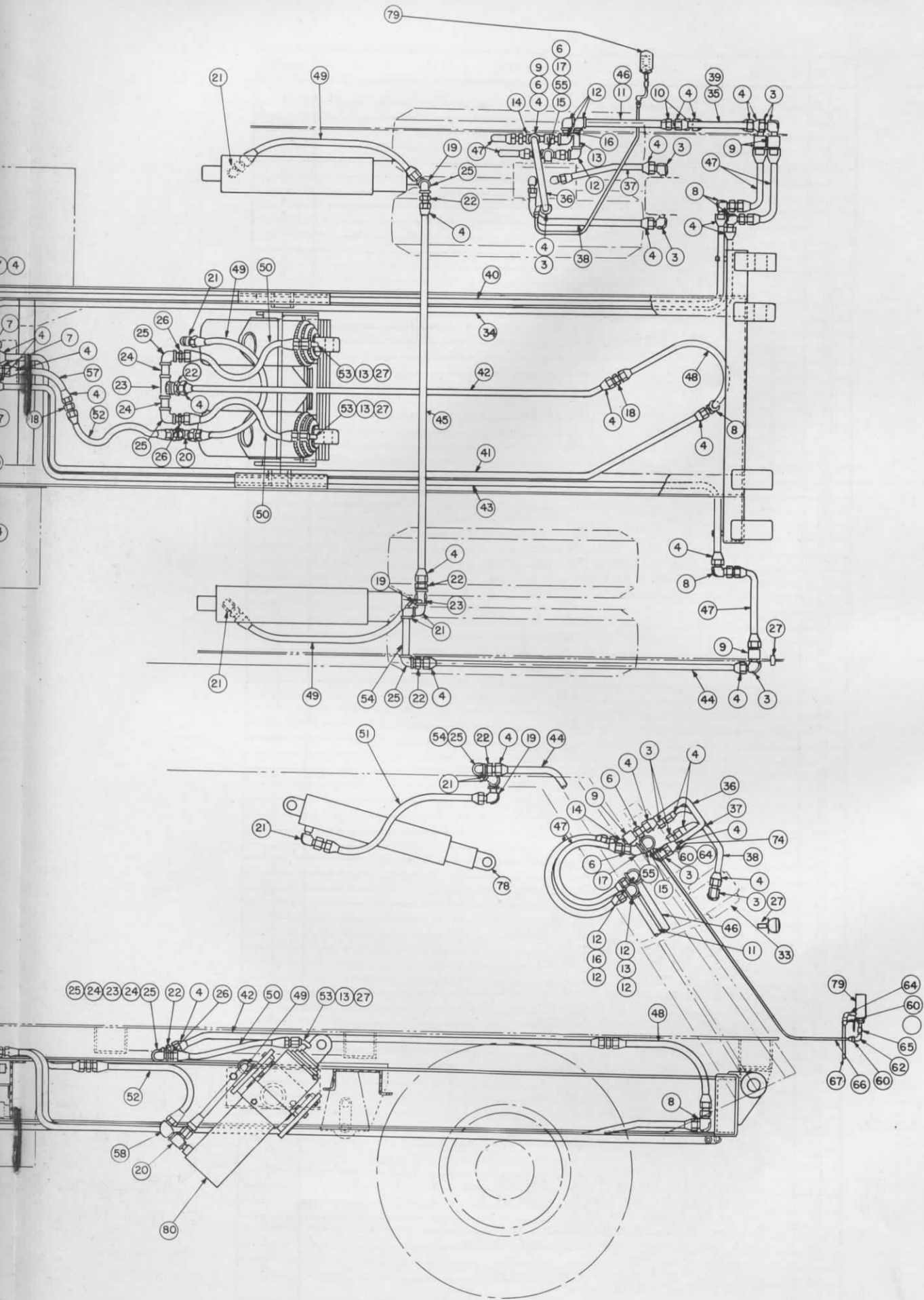


FIG. 10



| Item | Description | Req'd. |
|------|---|--------|
| 1 | 2" Close Nipple | 1 |
| 2 | 1" x 1" x 2" Tee | 1 |
| 3 | 1" Grafco 90° Elbow #1405-16 | 15 |
| 4 | 1" Grafco Tube Nut #1205-16 | 33 |
| 5 | 1 1/4" x 1" Steel Hex Bushing | 1 |
| 6 | 1" Grafco Adapter #1105-16 | 4 |
| 7 | 1" x 3/4" Grafco Elbow #1405-16-12 | 4 |
| 8 | 1" Grafco 90° Elbow #1505-16 | 4 |
| 9 | 1" Coupling Extra Heavy | 4 |
| 10 | 1" Grafco Adapter #1255-16 | 2 |
| 11 | 1" Pipe Extra Heavy 24" Lg. | 1 |
| 12 | 1" 90° Elbow Extra Heavy | 4 |
| 13 | 1/2" Close Nipple Extra Heavy | 2 |
| 14 | 1" Grafco 45° Elbow #1355-16 | 1 |
| 15 | 1" Street "L" Extra Heavy | 1 |
| 16 | 1" Close Nipple | 1 |
| 17 | 1" x 45° Elbow Extra Heavy | 1 |
| 18 | 1" Grafco Adapter #1305-16 | 2 |
| 19 | 3/4" Grafco Elbow #1405-12 | 2 |
| 20 | 3/4" Grafco Tee #1865-12 | 1 |
| 21 | 3/4" Street "L" Extra Heavy | 6 |
| 22 | 1" x 3/4" Grafco Adapter #1105-16-12 | 4 |
| 23 | 3/4" Tee Extra Heavy | 2 |
| 24 | 3/4" Nipple Extra Heavy 4" Lg. | 2 |
| 25 | 3/4" 90° Elbow Extra Heavy | 4 |
| 26 | 3/4" x 1/2" Steel Hex Bushing | 2 |
| 27 | 1/2" Coupling Extra Heavy | 3 |
| 28 | 1 1/4" Grafco Tube Nut #1205-20 | 2 |
| 29 | 1 1/4" O.D. Tubing w/.075" Wall 13 1/2" Lg. | 1 |
| 30 | 1 1/4" Grafco Adapter #1105-20 | 1 |
| 31 | 1" O.D. x .080" Wall Tube 36 1/2" Lg. | 1 |
| 32 | 1" O.D. x .080" Wall Tube 35 1/2" Lg. | 1 |
| 33 | 3" Motor MD #211 BAEQ 30-8 | 1 |
| 34 | 1" O.D. x .080" Wall Tube 168 Lg. | 1 |
| 35 | " " x " " " " 39 " | 1 |
| 36 | " " x " " " " 19 " | 1 |
| 37 | " " x " " " " 22 1/2 " | 1 |
| 38 | " " x " " " " 30 1/2 " | 1 |
| 39 | " " x " " " " 34 " | 1 |
| 40 | " " x " " " " 184 1/2 " | 1 |
| 41 | " " x " " " " 147 " | 1 |
| 42 | " " x " " " " 70 " | 1 |
| 43 | " " x " " " " 167 " | 1 |
| 44 | " " x " " " " 94 " | 1 |
| 45 | " " x " " " " 65 5/8 " | 1 |
| 46 | 1 Pipe Extra Heavy 30 Lg. | 1 |
| 47 | Grafco Hyd. Hose #B-7216-16 24 Lg. | 5 |
| 48 | " " " " #C-7216-16 36 Lg. | 1 |
| 49 | " " " " #B-7212-12 36 Lg. | 3 |
| 50 | " " " " #B-7208-8 24 Lg. | 2 |
| 51 | " " " " # | |
| 52 | " " " " #C-7216-16 24 Lg. | 1 |
| 53 | 1/2" Grafco 45° Elbow #1355-10 | 2 |
| 54 | 3/4" Pipe Nipple Extra Heavy 7" Lg. | 1 |
| 55 | 1" Shoulder Nipple | 1 |
| 56 | 1 1/4" Grafco 90° Elbow #1405-20 | 1 |
| 57 | 1" O.D. Tubing x .080" Wall 31 1/2" Lg. | 1 |
| 58 | 1" Grafco 90° Elbow #1405-16-12 | 1 |
| 59 | 3/8 NPT w/1/4 Tube 49 - F Elbow | 1 |
| 60 | 1/4 Tube #41 FS Union Nut | 5 |
| 61 | 1/4 O.D. Copper Tubing 96" Lg. | 1 |
| 62 | 1/4 NPT x 1/4 Tube 49 F Elbow | 2 |
| 63 | 3/4 x 3/8" Pipe Reducer Bushing | 1 |
| 64 | 1/8 NPT x 1/4 Tube 49 F Elbow | 2 |
| 65 | 1/4 Pipe Coupling | 1 |
| 66 | 1/4 O.D. Copper Tube 53" Lg. | 1 |
| 67 | 1/4 O.D. Copper Tube 6 1/2" Lg. | 1 |
| 68 | 1" O.D. x .080" Wall Tube 14" Lg. | 1 |
| 69 | 1" O.D. x .080" Wall Tube 11" Lg. | 1 |
| 70 | Power Take-off #41-D | 1 |
| 71 | Power Take-off Shaft Spicer 1200 Series | 1 |
| 72 | Flanged End 1 1/4" Bore | 1 |
| 73 | Flanged End 7/8 Bore | 1 |
| 74 | Control Valve Tandem Type 1" #AC 339 | 1 |
| 75 | Tandem Pump #PF 224 BAAG 15-4 JAG 15-1 | 1 |
| 76 | Relief Valve #MD 6820 HP 1" | 1 |
| 77 | Selector Valve H-1320 ESDK | 1 |
| 78 | Tail gate Cylinder #SP-41-50 18" Stroke | 2 |
| 79 | Pressure Gauge #8318 | 1 |
| 80 | Body Hoist (7") #5D-73-3 G1-63" Stroke | 2 |
| 81 | Arens Control w/3/16" Cable | 1 |

Box for Fig. 10

PARTS LIST

| Description | Vendor Part No. | Qty. |
|--|-----------------|------|
| CHASSIS PREPARATION | | |
| Hyd. Throttle Control | 2-C-322 | 1 |
| 1/16 Thk. Washer 3/8 to - 1" O.D. | 2-C-322-14 | 3 |
| 1/2 O.D. Steel Tube w/5/16 I.D. 6 9/16 Lg. *See Note on Dwg. | 2-C-322-15 | 3 |
| 5/16 St'd. Lock Washer | 2-C-322-16 | 1 |
| Hyd. Throt. Cont. Bracket | 2-C-324 | 1 |
| Hyd. Throt. "U" Bolt | 2-E-522 | 2 |
| Bell Crank Bracket | 2-D-453 | 1 |
| Bell Crank | 2-D-454 | 1 |
| AN-4-44 Bolt | 2-E-524 | 1 |
| Dished Washer | 2-E-523 | 1 |
| Throttle Extension | 2-E-525 | 1 |
| Ball End Socket Joint (Cad. Plated) | 2-B-213-9 | 1 |
| 1/4 - 28 S.A.E. Hex Nut | 2-B-213-10 | 6 |
| 1/4 - St'd. Lock Washer | 2-B-213-11 | 6 |
| 1/4 - St'd. Flat Washer | 2-B-213-12 | 4 |
| 5/16 Clevis Pin to mate part 15 | 2-B-213-13 | 1 |
| 3/32 Cotter Pin 1" Lg. | 2-B-213-14 | 2 |
| 5/16 Adjustable Yoke | 2-B-213-15 | 1 |
| 5/16 - 24 Hex Nut | 2-B-213-16 | 1 |
| 10-32 Rd. H'd. Mach. Screw 1/2" Lg. | 2-B-213-17 | 2 |
| 10-32 Nut | 2-B-213-18 | 2 |
| 3/16 Lock Washer | 2-B-213-19 | 2 |
| 5/16 Dia. Clevis Pin 7/8" Lg. | 2-B-213-20 | 1 |
| 3/8 NPT w/1/4 Tube #49-F Elbow | 2-A-103-59 | 1 |
| 1/4 Tube #41-FS Union Nut | 2-A-103-60 | 2 |
| 1/4 O.D. Tubing Copper 96" Lg. | 2-A-103-61 | 1 |
| 1/4 NPT x 1/4 Tube #49-F Elbow | 2-A-103-62 | 1 |
| 1" x 3/8 Pipe Reducer Bushing | 2-A-103-63 | 1 |
| 1/4" Loom 24" Lg. | | 1 |
| "O" Ring #6227-14 Series | 2-C-322-12 | |
| "O" Ring #6227-7 Series | 2-C-322-6 | |
| Hydraulic Tank | 2-C-316 | 1 |
| 2" St'd. Pipe Coupling | 2-C-316-5 | 1 |
| 1 1/4" Extra Heavy Welding Flange Phoenix #178 | 2-C-316-6 | 1 |
| 1" Extra Heavy Welding Flange Phoenix #177 | 2-C-316-7 | 1 |
| Cover Plate | 2-D-449 | 1 |
| 1 1/4 St'd. Pipe Cpl'g. | 2-D-449-2 | 1 |
| 3/8 Close Nipple | 2-D-449-3 | 1 |
| 1/2 - 1" St'd. Pipe Cpl'g. | 2-D-449-4 | 1 |
| Cover Plate Gasket | 2-D-450 | 1 |
| Oil Level Stick | 2-D-451 | 1 |
| 3/8 Knurled Pipe Cap | 2-D-451-2 | 1 |
| Strainer | 2-E-518 | 1 |
| Breather Cap | 2-E-519 | 1 |
| Ford Cap | 2-E-519-1 | 1 |
| 1/2 - 1 1/4 Shoulder Nipple | 2-E-519-2 | 1 |
| 5/16 - 18 Hex H'd. Cap Screw | 2-C-316-13 | 6 |
| 5/16 - 18 Hex H'd. Nut | 2-C-316-14 | 6 |
| 5/16 - St'd. Lock Washer | 2-C-316-15 | 6 |
| Double Check Valve | 2-E-515 | 1 |
| 1/2 - 1/2 St'd. Pipe Coupling | 2-C-316-19 | 1 |
| Magnetic Plug w/1/2 Pipe Th'd. | 2-C-316-20 | 1 |

| Description | Vendor Part No. | Qty. |
|--|-----------------|------------------|
| Chassis Ass'y. | 2-B-211 | 1 |
| "U" Bolt | 2-E-513 | 8 |
| 3/8-16 NC Hex H'd. Nut | 2-E-513-3 | 16 |
| 3/8 - St'd. Lock Washer | 2-E-513-4 | 16 |
| Wood Body Sill | 2-E-503 | 4 |
| Linner 1/4 x 3 x 12 1/2 | 2-E-503-2 | 4 |
| 12 Ga. w/ 3/8 Dia. Hd. Barbed Roofing Nails 1" Lg. | 2-E-503-3 | 24 |
| Hyd. Tank Bracket | 2-B-210 | 1 |
| 3/8 - 24 NF Hex Nut | 2-B-210-10 | 6 |
| 3/8 St'd. Washer | 2-B-210-11 | 2 |
| 3/8 - 16 NC Cap Screw 3/4 Lg. | 2-B-210-12 | 2 |
| 3/8 St'd. Lock Washer | 2-B-210-13 | 8 |
| 1/8 Dia. x 1/2 Lg. Split Rivet | 2-B-210-14 | 12 |
| 1 1/2 x 1/8 x 34 3/4 lg. Canvas Webbing | 2-B-210-6 | 2 |
| 3/8 x 24 S.A.E. Bolt 1 1/2 Lg. | 2-B-210-16 | 4 |
| 3/8 x 16 NC Nut | 2-B-210-17 | 2 |
| PTO #41D Chelsea Prod. Co. (Installed by Int.) | 2-A-103-70 | 1 |
| Spicer Drive Shaft 1200 Series | 2-A-103-71 | 1 |
| Drive Shaft End (To PTO) | 2-A-103-72 | 1 |
| Drive Shaft End (To Pump) | 2-A-103-73 | 1 |
| Pump Mounting Bracket | 2-C-318 | 1 |
| 1/2 - 20 S.A.E. Bolt 1 1/4 Lg. | 2-C-318-4 | 4 |
| 1/2 - St'd. Lock Washer | 2-C-318-5 | 4 |
| 1/2 - 20 S.A.E. Nut | 2-C-318-6 | 4 |
| 3/8 - 24 S.A.E. Bolt 1 1/4 Lg. | 2-C-318-7 | 6 |
| 3/8 - 24 S.A.E. Nut | 2-C-318-8 | 6 |
| 3/8 - St'd. Lock Washer | 2-C-318-9 | 6 |
| Hoist & Tail Gate Control Linkage | 2-B-212 | 1 |
| 3/8-24 Adjustable Yoke | 2-B-212-6 | 2 |
| 3/8-24 Nut | 2-B-212-7 | 2 |
| 3/8-Clevis Pin | 2-B-212-8 | 2 |
| 3/32 Cotter Pin 1" Lg. | 2-B-212-9 | 6 |
| 3/8 St'd. Flat Washer | 2-B-212-10 | 6 |
| 5/16 Clevis Pin | 2-B-212-11 | 2 |
| 1/8 Cotter Pin | 2-B-212-12 | 2 |
| Plastic Control Knob w/3/8 - 16 NC Th'd. | 2-B-212-13 | 2 |
| Dura-Grom #M-T - 842-7 | 2-B-212-16 | 2 |
| #10 x 1/2 P.K. Self Tapping Screw | 2-B-212-17 | 6 |
| 1/4 - 28 NF Hex H'd. Cap Screw 3/4 Lg. | 2-B-212-18 | 4 |
| 1/4 - 28 NF Nut | 2-B-212-19 | 4 |
| 1/4 - St'd. Lock Washer | 2-B-212-20 | 4 |
| Special Arens Control | 2-A-103-81 | 1 |
| 7" Hoist & Mounting Bracket Ass'y. | 2-C-309 | 1 |
| Comm. Shear & Stamp 7 Hoists S.D. 73-3-63 | 2-A-103-80 | 2 |
| Trunion Pivot | 2-C-310 | 2 |
| Body Hoist Frame | 2-C-311 | 2 |
| Body Hoist Hinge Pin | 2-E-501 | 2 |
| 1/2 - 20 S.A.E. Bolt 2 1/4 Lg. | 2-C-309-6 | 24 |
| 1/2 - St'd. Lock Washers | 2-C-309-7 | 24 |
| 1/2 - St'd. Flat Washers | 2-C-309-8 | 24 |
| 5/8 - 18 S.A.E. Bolt 1 1/4 Lg. | 2-C-309-10 | 8 |
| 5/8 - St'd. Lock Washer | 2-C-309-11 | 8 |
| Main Bearing (Comm. Shear & Stamp) A-2051-3 | 2-C-309-12 | 1 R.H. 1 L.H. |
| 5/8 - 18 S.A.E. Nut | 2-C-309-14 | 8 |

| Description | Vendor Part No. | Qty. |
|--|-----------------|------|
| Selector Valve Comm. # Shear & Stamp H-1320 ESDK _____ | 2-A-103-77 | 1 |
| Control Valve Mounting Bracket _____ | 2-C-319 | 1 |
| ½ - 20 S. A. E. Bolt 1¼ Lg. _____ | 2-C-319-4 | 2 |
| ½ - 20 S. A. E. Bolt 2¼ Lg. _____ | 2-C-319-5 | 4 |
| ½ - 20 S. A. E. Nut _____ | 2-C-319-6 | 6 |
| ½ - St'd. Lock Washers _____ | 2-C-319-7 | 6 |
| 3/8 - 24 S. A. E. Hex H'd. Mach. Screw 2 Lg. _____ | 2-C-319-9 | 1 |
| 3/8 - 24 S. A. E. Hex H'd. Nut _____ | 2-C-319-10 | 1 |
| U Bolt (1" I.D.) _____ | 1-E-532 | 14 |
| ¼ St'd. Lock Washers _____ | 1-E-532-2 | 28 |
| ¼ - 20 NC. Nut _____ | 1-E-532-3 | 28 |
| 2" Close Nipple _____ | 2-A-103-1 | 1 |
| 1" x 1" x 2" Tee _____ | 2-A-103-2 | 1 |
| Grafco Elbow #1405-16 _____ | 2-A-103-3 | 8 |
| Grafco Tube Nut #1205-16 _____ | 2-A-103-4 | 18 |
| 1¼ x 1 Steel Hex Bushing _____ | 2-A-103-5 | 1 |
| Grafco Adapter #1105-16 _____ | 2-A-103-6 | 1 |
| Grafco Elbow #1405-16-12 _____ | 2-A-103-7 | 4 |
| Grafco Elbow #1505-16 _____ | 2-A-103-8 | 4 |
| Grafco Adapter #1305-16 _____ | 2-A-103-18 | 2 |
| Grafco Tee #1865-12 _____ | 2-A-103-20 | 1 |
| 3/4" Street L Extra Heavy _____ | 2-A-103-21 | 2 |
| Grafco Tube Nut #1205-20 _____ | 2-A-103-28 | 2 |
| Grafco Adapter #1105-20 _____ | 2-A-103-30 | 1 |
| Grafco 45° Elbow #1355-10 _____ | 2-A-103-53 | 2 |
| Grafco 90° Elbow #1405-20 _____ | 2-A-103-56 | 1 |
| 1/2 Close Nipple _____ | 2-A-103-13 | 2 |
| 1/2 Coupling _____ | 2-A-103-27 | 3 |
| Grafco Hyd. Hose #B-7216-16 24" Lg. _____ | 2-A-103-47 | 3 |
| Grafco Hyd. Hose #C-7216-16 36" Lg. _____ | 2-A-103-48 | 1 |
| Grafco Hyd. Hose #B-7212-12 36" Lg. _____ | 2-A-103-49 | 1 |
| Grafco Hyd. Hose #B-7208-8 24" Lg. _____ | 2-A-103-50 | 2 |
| Grafco Hyd. Hose #C-7216-16 24" Lg. _____ | 2-A-103-52 | 1 |
| 1¼" O.D. Tubing w/.075 Wall 13¾ Lg. _____ | 2-A-103-29 | 1 |
| 1" O.D. x .080 Wall Tube 36½ Lg. _____ | 2-A-103-31 | 1 |
| 1" O.D. x .080 Wall Tube 35¼ Lg. _____ | 2-A-103-32 | 1 |
| 1" O.D. x .080 Wall Tube 168 Lg. _____ | 2-A-103-34 | 1 |
| 1" O.D. x .080 Wall Tube 184½ Lg. _____ | 2-A-103-40 | 1 |
| 1" O.D. x .080 Wall Tube 147 Lg. _____ | 2-A-103-41 | 1 |
| 1" O.D. x .080 Wall Tube 167 Lg. _____ | 2-A-103-43 | 1 |
| 1" O.D. x .080 Wall Tube 14 Lg. _____ | 2-A-103-68 | 1 |
| 1" O.D. x .080 Wall Tube 11 Lg. _____ | 2-A-103-69 | 1 |
| Hinge Bracket (Casting) _____ | 2-C-312 | 4 |
| Body Hinge Pin _____ | 2-E-505 | 2 |
| 3/16 x 3 Lg. Cotter Pin _____ | 2-E-505-2 | 4 |
| Buzzer 12 Volt Keystone Farraday _____ | | 1 |
| Limit Switch Westinghouse or Eq. _____ | | 1 |
| 7/16 BX Cable _____ | | |
| 16 Ga. Wire _____ | | |
| 3/8 Loom _____ | | |
| BX Box 4 Knockout Box _____ | | 1 |
| ½ BX Straight Connection _____ | | 4 |
| ½ BX Elbow _____ | | 1 |
| ¾ x ½ Brushes _____ | | 1 |
| 210 Terminals _____ | | 3 |
| ¼ Loom 26 Ft. _____ | | 1 |

| Description | Vendor Part No. | Qty. |
|---|-----------------|------------------|
| Body Ass'y. 16 Cu. Yd. 120 C.A. _____ | 1-A-100 | 1 |
| 3/4 x 1 1/2 Live Rubber 22 Ft. Lg. _____ | 1-A-100-17 | 1 |
| 1/4 - 28 NF Hex H'd. Cap Screw 1 1/2 Lg. _____ | 1-A-100-21 | 18 |
| 1/4 - 28 NF Nut _____ | 1-A-100-22 | 36 |
| 3/4 x 1 1/2 Live Rubber 35 Ft. Lg. _____ | 1-A-100-23 | 1 |
| 1/4 - 20 NC 1 3/4 Lg. Oval H'd. Mach. Screw _____ | 1-A-100-27 | 10 |
| 1/4 - 20 NC 1 1/2 Lg. Cap Screw _____ | 1-A-100-28 | 10 |
| 1/4 - 20 NC Nut _____ | 1-A-100-30 | 20 |
| 1/4 - St'd. Lock Washer _____ | 1-A-100-33 | 10 |
| Floor Ass'y. 16 Cu. Yd. _____ | 1-B-200 | 1 |
| Body Hoist Hinge Floor Angles _____ | 1-E-516 | 4 |
| Side Ass'y. _____ | 1-B-201 | 1 R.H. 1 L.H. |
| 1/4 - 20 NC 3/4 Lg. Oval H'd. Bolt _____ | 1-B-201-21 | 18 |
| 1/4 - St'd. Lock Washer _____ | 1-B-201-22 | 18 |
| 1/4 - 20 NC Nut _____ | 1-B-201-23 | 18 |
| Rubber Fender Type A 25" Radius _____ | 1-B-201-24 | 2 |
| Side Door Holder _____ | 1-D-405 | 3 |
| 3/8 - NF Cap Screw 1" Lg. _____ | 1-D-405-2 | 6 |
| 3/8 - NF Nut _____ | 1-D-405-3 | 6 |
| 3/8 - St'd. Flat Washer _____ | 1-D-405-4 | 6 |
| 3/8 - St'd. Lock Washer _____ | 1-D-405-5 | 6 |
| Gas Tank Access Door _____ | 1-D-447 | 1 |
| 2" Piano Hinge w/ 1/16 Wall 5 3/8 Lg. _____ | 1-D-447-3 | 1 |
| 1/4 - 20 Carriage Bolt 1/2 Lg. _____ | 1-D-447-5 | 1 |
| 1/4 - 20 Wing Nut _____ | 1-D-447-6 | 1 |
| Step _____ | 1-E-512 | 6 |
| Bottom Step Cover _____ | 1-E-512-2 | 1 |
| Tail Gate Cylinder #SF-41-50-18-18 Stroke _____ | 2-A-103-78 | 2 |
| Tail Gate Hoist Bracket _____ | 1-D-404 | 2 |
| Tail Gate Hoist Bracket (Forward) Pin _____ | 1-E-506 | 2 |
| 3/16 Cotter Pin 2" Lg. _____ | 1-E-506-2 | 4 |
| Tail Gate Hoist Bracket (Rear) Pin _____ | 1-E-507 | 2 |
| 3/16 Cotter Pin 2" Lg. _____ | 1-E-507-2 | 4 |
| Tail gate Hinge (Body) _____ | 1-D-403 | 4 |
| Tail Gate Hinge (Body) Pin _____ | 1-E-509 | 2 |
| 3/16 Cotter Pin 3" Lg. _____ | 1-E-509-2 | 4 |
| Upper Body Hinge (16 Yds.) _____ | 1-D-402 | 2 |
| 1/8 NPT Zerk Fitting _____ | 1-D-402-5 | 2 |
| Body Hoist Hinge _____ | 1-D-429 | 2 R.H. 2 L.H. |
| 1/8 NPT Zerk Fitting _____ | 1-D-429-3 | 4 |
| Tail Gate Lock Ass'y. _____ | 1-C-301 | 1 R.H. 1 L.H. |
| 3/4 St'd. Flat Washer _____ | 1-C-301-5 | 2 |
| 3/16 Cotter Pin 1" Lg. _____ | 1-C-301-6 | 2 |
| Tail Gate Cast Handle _____ | 1-C-303 | 2 |
| Tail Gate Eye Bolt _____ | 1-D-432 | 2 |
| Tail Gate Lock Swivel _____ | 1-D-431 | 2 R.H. 2 L.H. |
| 3/4 - 10 NC Bolt 2" Lg. _____ | 1-D-431-3 | 2 |
| 3/4 - 10 NC Nut _____ | 1-D-431-5 | 2 |
| Eye Bolt Spacer _____ | 1-E-502 | 2 |
| Metal Card Frame _____ | 1-C-321 | 2 |
| Hose Clamp Ass'y. _____ | 1-E-534 | 1 |
| 3/8 NF Cap Screw 2 1/2 Lg. _____ | 1-E-534-2 | 1 |
| 3/8 NF Nut _____ | 1-E-534-3 | 1 |
| 3/8 St'd. Lock Washer _____ | 1-E-534-4 | 1 |

| Description | Vendor Part No. | Qty. |
|--|-----------------|------------------|
| Pipe Clamp | 1-E-535 | 1 |
| 3/8 NF Cap Screw 2" Lg. | 1-E-535-2 | 1 |
| 3/8 NF Nut | 1-E-535-3 | 1 |
| 3/8 St'd. Lock Washer | 1-E-535-4 | 1 |
| 1/2 - 20 NF Cap Screw 1 1/2 Lg. | 1-D-429-4 | 8 |
| 1/2 - St'd. Lock Washer | 1-D-429-5 | 8 |
| 1/2 - 20 NF Nut | 1-D-429-6 | 8 |
| 1 U Bolt Ass'y. | 2-E-531 | 3 |
| U Bolt Tie Bar | 1-E-532 | 3 |
| Side Door Ass'y. | 1-B-204 | 1 R.H. 1 L.H. |
| 1/4-20 NC Hex H'd. Cap Screw 3/4" Lg. | 1-B-204-9 | 30 |
| 1/4-20 NC Hex H'd. Nut | 1-B-204-10 | 30 |
| 1/4 - St'd. Lock Washer | 1-B-204-11 | 30 |
| 1/4 x 2 Rubber Strip 31 3/8" Lg. As per Spec. | 1-B-204-12 | 4 |
| 1/4 x 2 Rubber Strip 30" Lg. As per Spec. | 1-B-204-13 | 2 |
| 4" Continuous Hinge w/1/8" Wall 31" Lg. As per Spec. | 1-B-204-14 | 1 R.H. 1 L.H. |
| Front Panel Assembly | 1-C-300 | 1 |
| Top Ass'y. | 1-B-202 | 1 |
| Fw'd. Crown | 1-D-400 | 1 |
| Roof & Side Support Gusset | 1-D-401 | 1 R.H. 1 L.H. |
| Roof Handle | 1-D-421 | 1 |
| Door Lock Handle Ass'y. | 1-D-406 | 4 |
| Cast Handle | 1-D-406-1 | 4 |
| 1/2 - 13 NC Cap Screw 1 1/2" Lg. | 1-D-406-2 | 4 |
| 1/2 - 13 NC Nut | 1-D-406-3 | 4 |
| 1/2 - St'd. Flat Washer | 1-D-406-4 | 32 |
| Snow Loading Door | 1-B-205 | 1 Set |
| 1/4 x 1 Rubber Strip 29 1/4" Lg. | 1-B-207-7 | 4 |
| 1/4 x 1 Rubber Strip 61" Lg. | 1-B-207-8 | 3 |
| 3/16 Dia. Tubular Rivets 1/2" Lg. w/ 3/8 Dia. Hd. #H-124 | 1-B-207-9 | 50 |
| 4" Continuous Hinge 56" Lg. As per Spec. | 1-B-207-10 | 2 |
| Piping Layout for Hydraulic System | 2-A-103 | 1 |
| 1" Grafco 90° Elbow #1405-16 | 2-A-103-3 | 3 |
| 1" Grafco Tube Nut #1205-16 | 2-A-103-4 | 10 |
| 1" Grafco Adapter #1105-16 | 2-A-103-6 | 1 |
| 1" Coupling Extra Heavy | 2-A-103-9 | 3 |
| 1" Grafco Adapter 1255-16 | 2-A-103-10 | 2 |
| 1" 90° Elbow Extra Heavy | 2-A-103-12 | 4 |
| 1" Grafco 45° Elbow #1355-16 | 2-A-103-14 | 1 |
| 1" x 45° Elbow Extra Heavy | 2-A-103-17 | 1 |
| 1" Grafco Adapter #1305-16 | 2-A-103-18 | 2 |
| 3/4" Grafco Elbow #1405-12 | 2-A-103-19 | 2 |
| 3/4" Street "L" Extra Heavy | 2-A-103-21 | 4 |
| 1" x 3/4" Grafco Adapter #1105-16-12 | 2-A-103-22 | 4 |
| 3/4" Tee Extra Heavy | 2-A-103-23 | 2 |
| 3/4" Nipple Extra Heavy 4" Lg. | 2-A-103-24 | 2 |
| 3/4" 90° Extra Heavy Elbow | 2-A-103-25 | 4 |
| 3/4" x 1/2" Steel Hex Bushing | 2-A-103-26 | 2 |
| 1" Shoulder Nipple | 2-A-103-55 | 1 |
| 1" Close Nipple | 2-A-103-16 | 1 |
| 1" Pipe Extra Heavy 24" Lg. | 2-A-103-11 | 1 |
| 1" O.D. x .080 Wall Tube 39" Lg. | 2-A-103-35 | 1 |
| 1" O.D. x .080 Wall Tube 34" Lg. | 2-A-103-39 | 1 |
| 1" O.D. x .080 Wall Tube 70" Lg. | 2-A-103-42 | 1 |
| 1" O.D. x .080 Wall Tube 94" Lg. | 2-A-103-44 | 1 |

| Description | Vendor Part No. | Qty. |
|--|-----------------|------|
| 1" O.D. x .080 Wall Tube 65 5/8" Lg. | 2-A-103-45 | 1 |
| 1" Pipe Extra Heavy 30" Lg. | 2-A-103-46 | 1 |
| 3/4" Pipe Nipple Extra Heavy 7" Lg. | 2-A-103-54 | 1 |
| Grafco Hyd. Hose #B-7216-16-24" Lg. | 2-A-103-47 | 2 |
| Grafco Hyd. Hose #B-7212-12-36" Lg. | 2-A-103-49 | 2 |
| Grafco Hyd. Hose #B-7208-8-24" Lg. | 2-A-103-50 | 2 |
| 1/2" Pipe Coupling | 2-A-103-27 | 1 |
| 1/2 BX Elbow | | 1 |
| Amber Reflector 7X Long (Persons) | | 2 |
| Red Reflector 7X Long (Persons) | | 2 |
| Tail Gate Ass'y. | 3-A-102 | 1 |
| Safety Arms | 3-D-407 | 2 |
| 3/8-16 NC Thumb Screw 2" Lg. | 3-D-407-6 | 2 |
| Tail Gate Hinge Bracket | 3-D-408 | 2 |
| Bunting Bearing #3237 2.500 O.D. x 2 1/4" I.D. 4" Lg. | 3-D-408-8 | 2 |
| 45° Alemite Fitting #1693 | 3-D-408-9 | 2 |
| Inner Flange Block Support Plate | 3-D-440 | 2 |
| 7/16 - 14 NC Cap Screw 1" Lg. | 3-D-440-2 | 16 |
| 7/16 - St'd. Lock Washer | 3-D-440-3 | 16 |
| Door Lock Handle Ass'y. | 1-D-406 | 2 |
| Cast Handle | 1-D-406-1 | 2 |
| 1/2 - 13 NC Cap Screw 1 1/2" Lg. | 1-D-406-2 | 2 |
| 1/2 - 13 NC Nut | 1-D-406-3 | 2 |
| 1/2 St'd. Flat Washer | 1-D-406-4 | 6 |
| Disc Assembly | 3-D-410 | 1 |
| Pusher Plate Shaft | 3-E-510 | 1 |
| Side Plate Center Shaft Note: See next sheet for key 3-E-508-2 | 3-E-508 | 2 |
| Pusher Plate (Width 40 9/16") | 3-C-307 | 1 |
| Upper Bearing Block | 3-D-411 | 2 |
| Oilite Bearing #B-2024-24 | 3-D-411-2 | 2 |
| 1/8 x 3/8 Flat H'd. Brass Rivets | 3-D-411-3 | 8 |
| 3/16 Dia. x 1 1/4" Lg. Dowel Pins | 3-D-411-4 | 4 |
| 3/8 - 24 Aircraft Bolts 3" Lg. | 3-D-411-5 | 8 |
| 3/8 - 24 NF Hex H'd. Nuts | 3-D-411-6 | 8 |
| 3/8 - Star Lock Washers | 3-D-411-7 | 8 |
| 1/4" Alemite Fitting #1792 | 3-D-411-8 | 2 |
| Lower Bearing Block | 3-D-412 | 2 |
| Oilite Bearing #B-2832-24 | 3-D-412-2 | 2 |
| 1/8 Dia. x 3/8" Lg. Flat H'd. Brass Rivet | 3-D-412-3 | 8 |
| 3/16 Dia. x 1 1/4" Lg. Dowel Pins | 3-D-412-4 | 4 |
| 3/8 - 24 NF Aircraft Bolts 3 1/4" Lg. | 3-D-412-5 | 8 |
| 3/8 - 24 NF Hex H'd. Nut | 3-D-412-6 | 8 |
| 3/8 Star Lock Washer | 3-D-412-7 | 8 |
| 1/4" Alemite Fitting #1792 | 3-D-412-8 | 2 |
| Pusher Plate Shaft Cover | 3-D-420 | 1 |
| Pusher Arm Ass'y. | 3-D-413 | 1 |
| Pusher Arm Shaft | 3-E-511 | 1 |
| Pusher Arm Swivel | 3-D-414 | 2 |
| 1" - 8 NC Hex H'd. Bolt 4 1/2" Lg. | 3-D-414-1 | 2 |
| 1" - 8 NC Castle Nut | 3-D-414-2 | 2 |
| 1" - 1/8 Washer | 3-D-414-3 | 2 |
| Bronze Bearing 1" I.D. x 1 1/4" O.D. 1 1/2" Lg. | 3-D-414-7 | 2 |
| 1/4" Alemite Fitting #1792 | 3-D-414-8 | 2 |

| Description | Vendor Part No. | Qty. |
|---|-----------------|---------|
| Disc Support Cover | 3-D-435 | 1 R. H. |
| 1/4 - 20 NC Cap Screw 3/4" Lg. | 3-D-435-5 | 1 L. H. |
| 1/4 - 20 NC Nut | 3-D-435-6 | 6 |
| 1/4 St'd. Lock Washer | 3-D-435-7 | 4 |
| 1/2" Sq. Key 2" Lg. | 3-E-508-2 | 6 |
| Pillow Block Disc Support Bracket | 3-C-315 | 2 |
| 5/8 - 18 Hex Head Bolt 3" Lg. | 3-C-415-7 | 1 R. H. |
| 5/8 - 18 Hex Head Nut | 3-C-415-8 | 1 L. H. |
| 5/8 St'd. Lock Washer | 3-C-415-9 | 8 |
| 5/8 St'd. Washer | 3-C-415-10 | 8 |
| 1/4 - 20 NC Nut | 3-C-415-13 | 8 |
| Link Belt Sprocket 24 Tooth 1 1/4" P. | 3-C-415-14 | 2 |
| 2" Ling Belt Pillow Block #P2-432 | 3-C-415-15 | 2 |
| R. C. 100 1 1/4" P. 5' - 7 1/2" Lg. w/(1) Offset Link | 3-C-415-18 | 4 |
| 2 Pillow Block #F-432 | 3-A-101-47 | 2 |
| Tie-In Plate | 3-E-526 | 2 |
| Hole Covers | 3-E-520 | 2 |
| #10 x 1/2" Self Tapping Screws | 3-E-520-2 | 8 |
| Buzzer Bracket | 3-D-423 | 2 |
| 10-24 R'd. Head Mach. Screw | 3-D-423-2 | 2 |
| 3/16 Lock Washer | 3-D-423-3 | 2 |
| 10-24 Nut | 3-D-423-4 | 2 |
| Drain Guide | 3-E-536 | 1 |
| Buzzer Bracket Washer | 3-E-533 | 2 |
| #10 x 1/2" Self Tapping Screws | 3-E-533-2 | 4 |
| License Plate Bracket | 3-E-527 | 1 |
| Pressure Gauge (Schrader) Plug Type #8318 | 2-A-103-79 | 1 |
| Pressure Gauge Bracket | 3-E-517 | 1 |
| 90° Grafco Elbow (Special-Tapped to take #49 F Elb.) | 3-E-517 | 1 |
| 1/4 Tube Union Nut #41-FS | 2-A-103-60 | 3 |
| 1/4 NPT x 1/4 Tube #49-F Elbow | 2-A-103-62 | 1 |
| 1/8 NPT x 1/4 Tube #49-F Elbow | 2-A-103-64 | 2 |
| 1/4 Pipe Coupling | 2-A-103-65 | 1 |
| 1/4 O.D. Copper Tube 53" Lg. | 2-A-103-66 | 1 |
| 1/4 O.D. Copper Tube 6 1/2" Lg. | 2-A-103-67 | 1 |
| 1/4 Loom 10" Lg. | | 1 |
| 1" Grafco 90° Elbow 1405-16 | 2-A-103-3 | 4 |
| 1" Grafco Tube Nut 1205-16 | 2-A-103-4 | 6 |
| 1" Grafco Adapter 1105-16 | 2-A-103-6 | 2 |
| 1" Coupling Extra Heavy | 2-A-103-9 | 1 |
| 1" Grafco 45° Elbow 1355-16 | 2-A-103-14 | 1 |
| 1" Street "L" Extra Heavy | 2-A-103-15 | 1 |
| 1" x 45° Elbow Extra Heavy | 2-A-103-17 | 1 |
| 1" Shoulder Nipple | 2-A-103-55 | 1 |
| 1" O.D. x .080 Wall Tube 19" Lg. | 2-A-103-36 | 1 |
| 1" O.D. x .080 Wall Tube 22 1/4" Lg. | 2-A-103-37 | 1 |
| 1" O.D. x .080 Wall Tube 30 1/2" Lg. | 2-A-103-38 | 1 |
| 16 Gauge Wire | | |
| 9004 Switches Cole-Hersey | 3-A-101-51 | 2 |
| 1/2" Flat Washers | | 2 |
| 210 Terminals | | 9 |
| 7X Red Reflectors | | 2 |
| Tail Light - International | | 1 |
| 1/2" Bx. Cable Elbow | | 3 |
| 1/2" BX Straight Connections | | 5 |

| Description | Vendor Part No. | Qty. |
|---|-----------------|------------------|
| #10 x 1/2" P.K. Self Tapping Screws | | 20 |
| 1/2" Electric Clips | | 20 |
| 7/16" BX Cable | | |
| Head Shaft Journal Bearing Bracket | 3-D-418 | |
| 5/8 - 11 NC Hex H'd. Cap Screw 1 1/4" Lg. | 3-D-418-5 | 2 |
| 5/8 - 11 NC Hex H'd. Cap Screw 2" Lg. | 3-D-418-6 | 2 |
| 5/8 - St'd. Flat Washer | 3-D-418-7 | 2 |
| 5/8 - 11 NC Nut | 3-D-418-8 | 4 |
| Adjustable Chain Guides | 3-B-207 | 1 R.H. 1 L.H. |
| 1/2 - 20 NF Cap Screws 1 1/2" Lg. | 3-B-207-5 | 11 |
| 1/2 - 20 NF Nut | 3-B-207-6 | 11 |
| 1/2" - St'd. Flat Washer | 3-B-207-7 | 11 |
| 1/2 - St'd. Lock Washer | 3-B-207-8 | 11 |
| Conveyor Chain 4" P. #S.R. 3154 w/Flight Attachment | 3-A-101-38 | 1 R.H. 1 L.H. |
| Head Shaft Inspection Door | 3-C-304 | 1 |
| 1/16" x 2" (Open) Pinno Hinge As per Spec. | 3-C-304-4 | 1 |
| Flight (Fabricated) | 3-C-305 | 11 |
| 1/2 - 20 NF Cap Screw 1 1/2" Lg. | 3-C-305-5 | 44 |
| 1/2 - 20 NF Hex Head Nut | 3-C-305-6 | 44 |
| 1/2" - St'd. Lock Washer | 3-C-305-7 | 44 |
| Wear Plate | 3-C-306 | 1 |
| Tail Gate Lock Plate | 3-D-438 | 2 |
| Wiper Shield | 3-C-317 | 1 |
| 3/8 Carriage Bolt 3" Lg. | 3-C-317-13 | 7 |
| 3/8 Carriage Bolt 2 1/2" Lg. | 3-C-317-10 | 4 |
| 3/8 USS Nut | 3-C-317-11 | 11 |
| 3/8" St'd. Lock Washer | 3-C-317-12 | 11 |
| Chain Cover | 3-D-448 | 1 |
| 1/4 - 20 NC Cap Screw 3/4" Lg. | 3-D-448-3 | 1 |
| 1/4 - 20 Nut | 3-D-448-4 | 1 |
| 1/4 - St'd. Lock Washer | 3-D-448-5 | 1 |
| #10 x 1/2" Self Tap Screw | 3-D-448-7 | 2 |
| Head Shaft | 3-D-417 | 1 |
| 1/2" Sq. Key 2" Lg. | 3-D-417-2 | 1 |
| 1/2" Sq. Key 4 1/8" Lg. | 3-D-417-3 | 2 |
| 1/2" Sq. Key 4 3/8" Lg. | 3-D-417-4 | 1 |
| Link Belt Sprocket 1 1/4" P 12 Tooth | 3-D-417-5 | 2 |
| Chain Belt Sprocket 4" P 10 Tooth #SR 3145 | 3-D-417-6 | 2 |
| Link Belt Sprocket 1 1/2" P 26 Tooth | 3-D-417-7 | 1 |
| Flange Block Support L.H. | 3-D-415 | 1 |
| 1/2 - 20 NF cap screw 1 1/4" Lg. | 3-D-415-2 | 4 |
| 1/2" St'd. Lock Washer | 3-D-415-3 | 3 |
| Flange Block Support R.H. | 3-D-416 | 1 |
| 1/2 - 20 NF Cap Screw 1 1/4" Lg. | 3-D-416-2 | 4 |
| 1/2" St'd. Lock Washer | 3-D-416-3 | 4 |
| Link Belt 2" Solid Journal Bearing | 3-A-101-40 | 1 |
| 1/8 NPT Zerk Fitting #1610 | 3-A-101-40-1 | |
| 3/8 NPT - 1/8 NPT Reducer Bushing | 3-A-101-40-2 | |
| Head Shaft Journal Bearing Bracket | 3-D-418 | 1 |
| 5/8" St'd. Lock Washer | 3-D-418-4 | 2 |
| Speed Reducer Drive Ass'y Cover | 3-B-214 | 1 |
| 2" Continuous Piano Hinge 42" Lg. | 3-B-214-4 | 1 |
| Hood Fasteners #9639 Style B | 3-B-214-9 | 1 |
| Cover Hook | 3-E-537 | 1 |

| Description | Vendor Part No. | Qty. |
|--|-----------------|---------------|
| Speed Reducer & Drive Ass'y. _____ | 3-D-424 | 1 |
| Speed Reducer _____ | 3-D-424-1 | 1 |
| Drive Motor _____ | 3-D-424-2 | 1 |
| Sprocket 1½" P x 11 Tooth _____ | 3-D-424-3 | 1 |
| Flexible Coupling R.C. #5016 _____ | 3-D-424-4 | 1 |
| Drive Mounting Plate _____ | 3-D-426 | 1 |
| 1/2 - 13 NC Hex Head Cap Screw 1" Lg. _____ | 3-D-426-4 | 4 |
| 1/2" - St'd. Lock Washers _____ | 3-D-426-5 | 8 |
| 1/2 - 13 Cap Screw Hex Head 1¼" Lg. _____ | 3-D-426-6 | 4 |
| 1/2 - 13 Hex Socket Cap Screw 2" Lg. _____ | 3-D-426-7 | 4 |
| 1/2 - 13 Hex Head Nut _____ | 3-D-426-8 | 8 |
| Base Plate _____ | 3-D-425 | 1 |
| 1/2 - 13 Flat Head Hex Socket Cap Screw 1 1/2" Lg. _____ | 3-D-425-2 | 5 |
| 1/2 - 13 Hex Head Nut _____ | 3-D-425-3 | 5 |
| 1/2" - St'd. Washer _____ | 3-D-425-4 | 5 |
| 1/2" - St'd. Lock Washer _____ | 3-D-425-5 | 5 |
| R.C. 120 1½" Pitch 6'3" Lg. Link belt _____ | 3-D-424-9 | 1 |
| Remote Control for Loading Mechanism _____ | 3-C-326 | 1 |
| 1/2" Adjustable Yoke _____ | 3-C-326-1 | 3 |
| 2-way Control Valve _____ | 2-A-103-74 | 1 |
| Inner Flange Block Support Plate _____ | 3-D-440 | 2 |
| | | 3 |
| | | 3 |
| | | 3 |
| Hopper _____ | 3-B-206 | |
| 1-2 - 20 NF Cap Screw 1" Lg. _____ | 3-B-206-13 | 12 |
| 1/2 - 20 NF Hex Head Nut _____ | 3-B-206-14 | 12 |
| 1/2" - St'd. Lock Washer _____ | 3-B-206-15 | 12 |
| 1½" - Pipe Coupling (Cut in ½) _____ | 3-B-206-16 | 1 |
| 1½" Sq. Head Pipe Plug _____ | 3-B-206-17 | 1 |
| 3/8 - 24 NF Cap Screw 1" Lg. _____ | 3-B-206-18 | 4 |
| 3/8 - 24 NF Hex Head Nut _____ | 3-B-206-19 | 4 |
| 3/8" - St'd. Lock washer _____ | 3-B-206-20 | 4 |
| Hopper Sill Pad _____ | 3-C-308 | 1 |
| Sill Pad Insert _____ | 3-D-439 | 1 |
| 5/16 Carriage Bolt 1" Lg. _____ | 3-D-439-2 | 6 |
| 5/16 - 18 NC Nut _____ | 3-D-439-3 | 6 |
| 5/16" St'd. Lock Washer _____ | 3-D-439-4 | 6 |
| Top Frame Lining (Hopper) _____ | 3-D-444 | 1 R. H. |
| 1/4 Carriage Bolt 3/4" Lg. _____ | 3-D-444-2 | 1 L. H. 10 |
| 1/4" St'd. Lock Washer _____ | 3-D-444-3 | 10 |
| 1/4 - 20 NC Nut _____ | 3-D-444-4 | 10 |
| Hinged Can Stop _____ | 3-D-455 | 1 |
| 1/4" x 4" (Open) Piano Hinge 6" Lg. _____ | 3-D-455-3 | 1 |

ROTO·PAC

