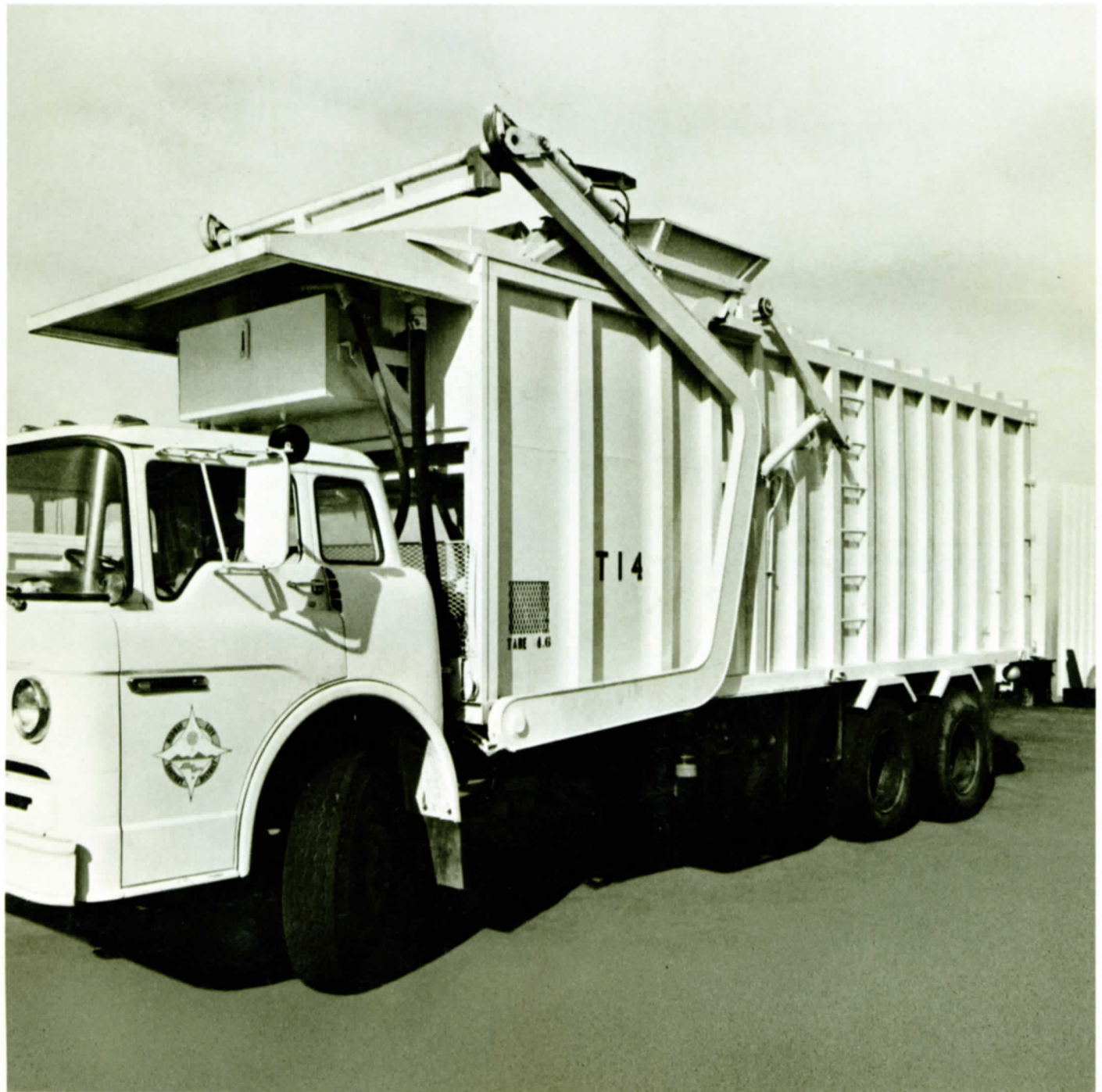


MAXON FULL-PAK FRONT LOADER up to 58 CUBIC YARDS



HAUL REFUSE, NOT STEEL

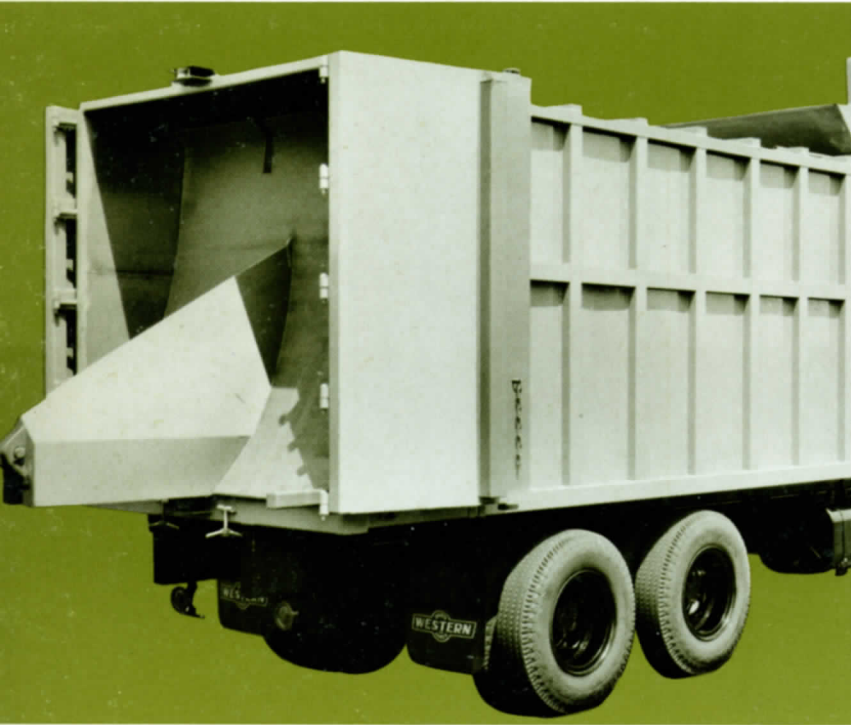
HIGH TENSILE STEEL REDUCES WEIGHT

Full-Pak is a **light weight** front-end loading refuse truck designed for commercial and large residential routes. Extra tonnage is the whole idea behind Full-Pak. It comes in several large sizes ranging from a 2 axle 28 cubic yard capacity to 3 axle 58 yard models. All sizes were built to be exactly what they are. Big, strong boxes on wheels. Up to 1566 cubic feet of space to fill up. And the best thing about all of it is that you can use all of it. There's a packer blade inside each Full-Pak. It compacts refuse that's been dumped in the top with a hydraulic force of over 85,000 pounds. And when it's time to unload, it does that too. Effortlessly. Rapidly. The blade ejects the full load out the back door.

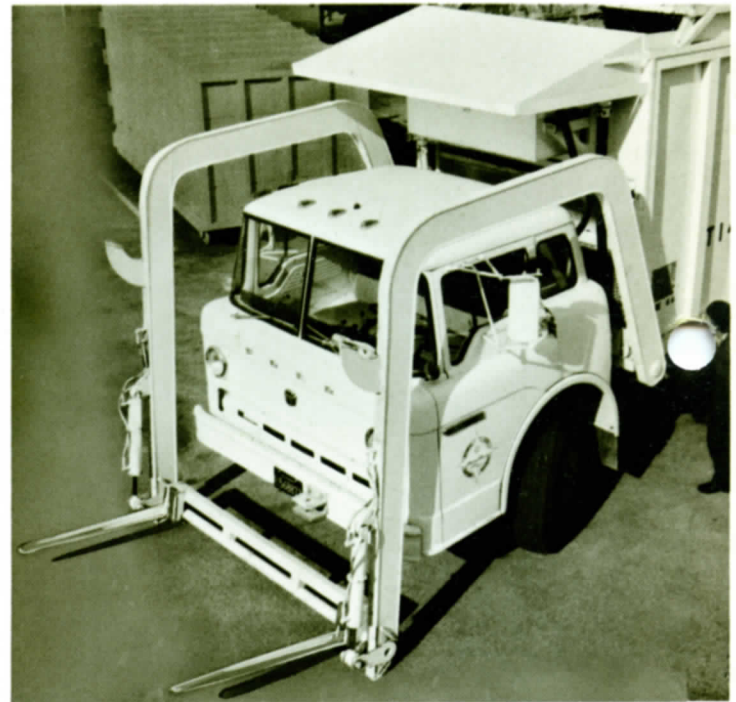
Up front there's a pair of **rugged lifting arms** with **tilt fork arrangements** to fit virtually any type of container. Containers up to 8 cubic yards weighing over 4500 pounds. (optional 6000 & 7000 lbs.) And the driver can get in and out of the cab.

at any time because the lifting arms go over the doors, not across them.

Full-Pak has a lot going for it topside too. For example, there's a **permanent cab shield** installed high up to minimize spillage and permit tilting of the cab.



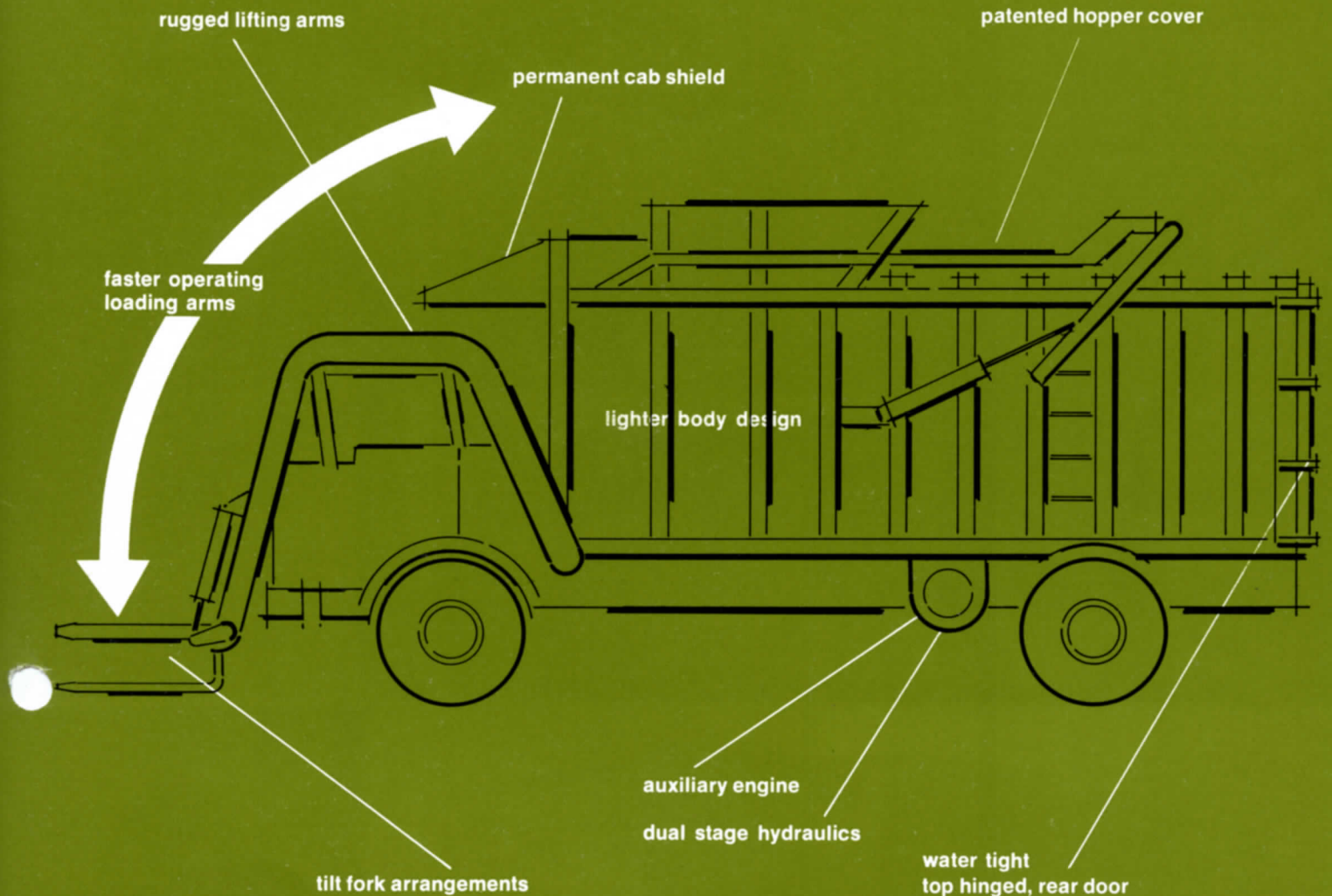
Hydraulic powered packer blade compacts refuse with force of 85,000 pounds; ejects it at dumpsite in one clean sweep.



Loading arms with bottom or side pick-up forks lift up to 7000 lbs. in containers up to 8 cubic yards; provide cab door clearance in all operating positions.



Patented hydraulic actuated compaction cover lifts and slides back for loading. Once open, cover need not be closed until heavy compaction begins; saves valuable minutes per stop.



HOPPER COVER SAVES TIME

The hydraulic powered **patented hopper cover** works like a sunroof, not like a trap door. It won't blow off or smack into things if you have it open during transit. The cover is designed to be left open most of the time and closed only during last part of route when compaction takes place, saving valuable driver time. And when you close it, it becomes part of the compactor body. Tight. Strong.

All Full-Paks have a unique **dual stage** hydraulic power system. It is driven by either power take off or **auxiliary engine**.

The heart of the system is a high pressure pump that is 2 pumps in one. Operating together, pressures up to 1,500 P.S.I. are developed for powering the packer blade, where speed and high pressure are desirable. Where controlled metering is needed for cylinder functions such as lift/tilt arms and hopper cover, only half the pump works while the other half rests.



ADDED ATTRACTIONS

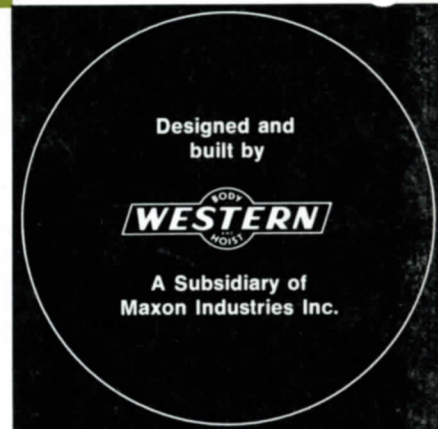
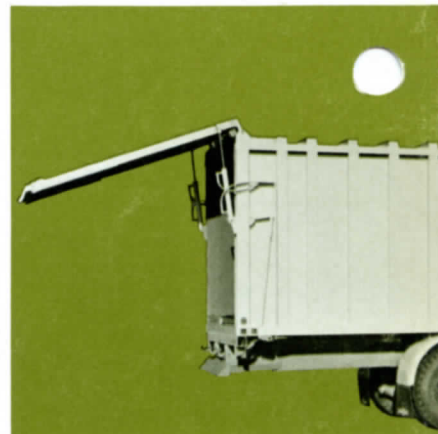
Dual hydraulic controls are standard. One set is located inside the cab, and another is mounted on the packer body just outside the drivers door.

Specifications

Model	18L-30Y	20L-35Y	24L-42Y	28L-58Y
Rated Capacity	30.0 cu. yd.	35.0 cu. yd.	42.0 cu. yd.	58.0 cu. yd.
Packer Body and Weight	12,850 lb.	13,650 lb.	14,850 lb.	16,450 lb.
Inside Body Length	18'	20'	24'	28'
Inside Body Width	6'9"	6'9"	6'9"	7'4"
Inside Body Height	7'0"	7'0"	7'0"	8'0"

For maximum efficiency, an electric/air motivator accelerates the P.T.O. (or optional auxiliary engine) power source each time the hydraulics are used. Occasionally specialized equipment is desired to tailor Full-Paks to individual requirements. For instance there's an **automatic hopper cover opener** that works in conjunction with the lifting arms. A hydraulic powered, **top hinged, rear door** (side hinged barn doors are standard) that seals itself watertight 15 inches off the floor. Extra gas tanks for those long trips to the dump.

A **self contained, pressurized cleaning system** for in-route container washing. **Heavy duty lifting arms** (6,000 pound capacity) **Auxiliary gas or diesel engines** to save wear on truck engine and permit in-transit packing.



**maxon
industries
inc.**

1960 East Slauson Avenue
Huntington Park, Calif. 90255
Phone (213) 589-7321
Telex 673280

Chicago Warehouse
1918 Main Street
Melrose Park, Illinois 60160
Phone (312) 345-6740
Telex 728423

LESS IS MORE

It stands to reason. The less steel you design your truck to carry, the more refuse you can carry. **And less steel does not mean less strength.** In the case of a Full-Pak, it means more. Full-Paks using light weight Hi-Tensile steel are designed to insure maximum legal payloads.

When your driver starts up a Full-Pak, he's putting you on the road to profit!



First Class
U.S. Postage
PAID
Permit No. 103
Huntington Park, Ca.

Business Reply Mail

No Postage Stamp Necessary if Mailed in the United States

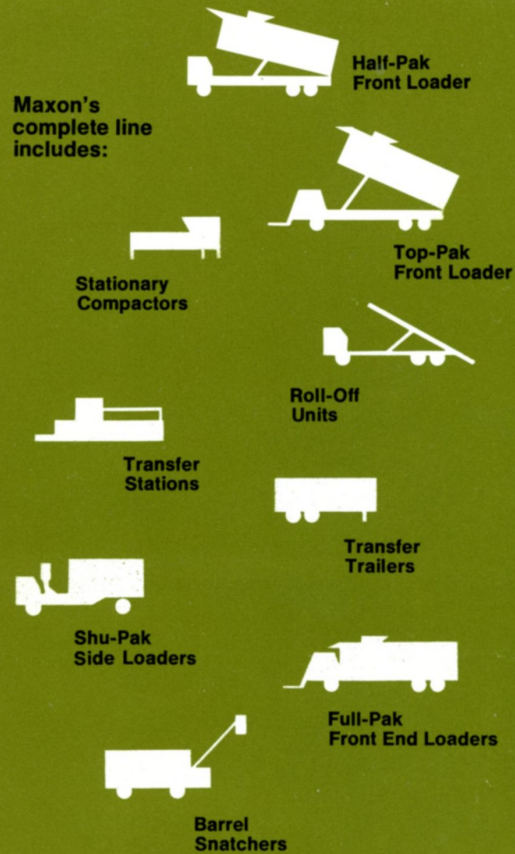
Postage will be paid by

**maxon
industries
inc.**

1960 East Slauson Avenue
Huntington Park, California 90255



Maxon's complete line includes:



- Stationary Compactors
- Roll-Off Units
- Transfer Stations
- Transfer Trailers
- Shu-Pak Side Loaders
- Full-Pak Front End Loaders
- Barrel Snatchers

Please send additional information regarding

Name _____

Title _____

Company _____ Phone _____

Address _____

City _____ State _____ Zip _____

Please have your representative contact us