

The New Norba KI-8

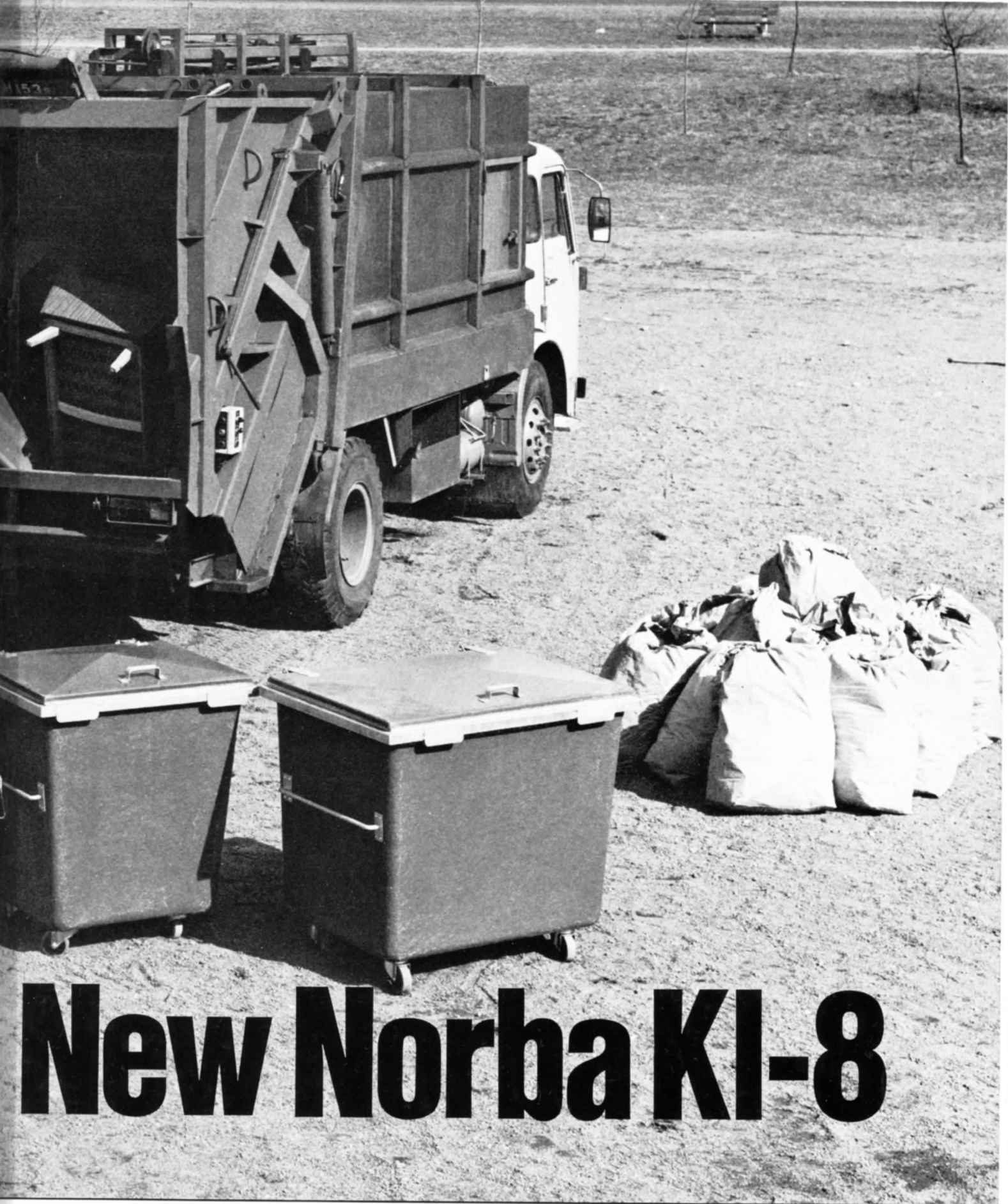


The

A new refuse collection vehicle with a new compression technique!

That's the new Norba KI-8. It's fitted with "jaws" which pre-compress the waste and press it against the ejection panel in the container.

This ensures maximum utilization of the legal loading capacity; and the front axle bears more



New Norba KI-8

of the load. The Norba KI-8 can be fed with domestic and commercial refuse in addition to bulky waste. And it will take waste in bags, bins and containers of up to 8 m³.

NORBA

Norba AB, Box 7, S-384 01 Blomstermåla, Sweden. Tel. 46 499-206 50.