



**new  
way**

**REAR LOADING**

# **REFUSE PACKERS**

**11** CUBIC  
YARDS

**13** CUBIC  
YARDS

**16** CUBIC  
YARDS

**Demand a lot from your loader?**

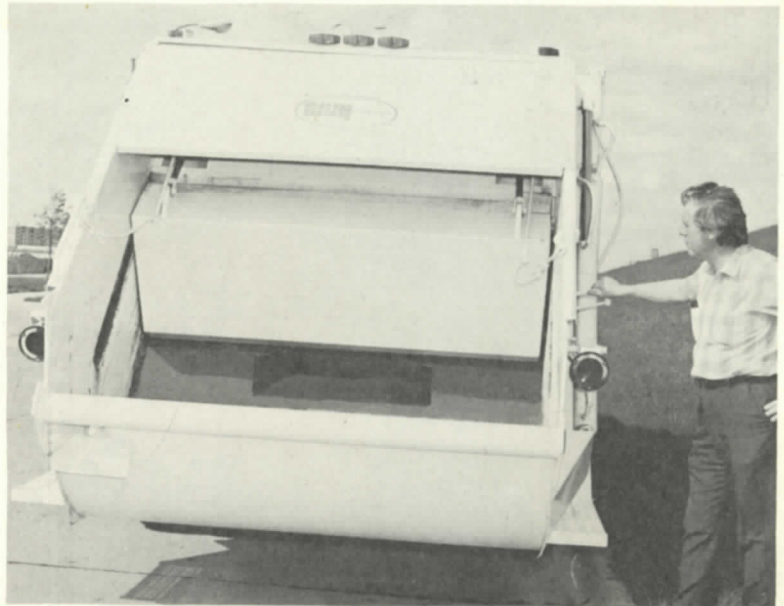
**Answer the demand with a  
NEW WAY rear loading  
refuse packer, built to pack  
and pack and pack....**

**NEW WAY MANUFACTURING COMPANY • Des Moines, Iowa 50313**

# EXCEPTIONAL FEATURES- 3 CONVENIENT MODELS...

11 CUBIC YARDS 13 CUBIC YARDS 16 CUBIC YARDS

The automatic packing cycle is completely hydraulic . . . no electrical equipment that can give you fits on rainy days. An additional feature that makes it a superior packer is the ability of the operator to override the automatic cycling at any point.



Ruggedly built, the body floor design has heavy 8" channels that form the packer bed, which are spaced 34" apart contributing to the low center of gravity and strength of the packer body. Pushout plate base rides smoothly inside of the channels with 4 casted shoes (2 on each side) enabling the plate to resist binding and twisting. Floor width is divided into three short spans which means less wear and warpage because a large portion of the weight of the refuse is supported by the channels. The double acting, telescopic pushout cylinder is horizontally mounted to achieve maximum efficiency and does not extend into truck cab. It has a rated packing force of up to 60,000 pounds. Packing pressure increases as load fills giving greatest compaction force where it really counts. Packer plate quickly ejects load, no underbody hoist.

New Way engineering allows the push out plate to retract to the forward end and serve as the front of the packer body. This space saving feature permits easier maintenance and cleaning, eliminates dead weight and improves weight distribution.

For maximum ease of operation the rear loader tailgate unlocks, raises, lowers and locks by a single control at front of packer. Initial cylinder movement releases locks, then completely opens tailgate in a single, smooth operation. No wasted time with manual levers or cranks.

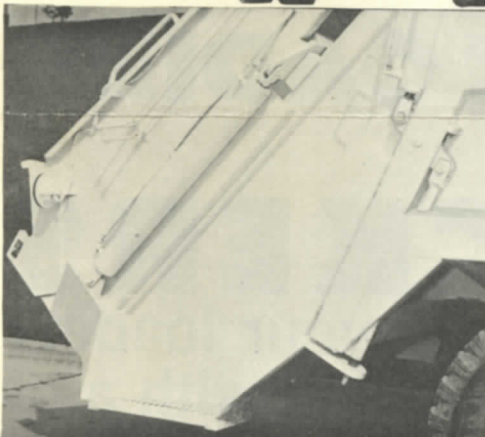
When the tailgate closes, drifted lockpins, one on each side, automatically move into place squeezing the special rubber seal to prevent fluid leakage.

Built-in safety of cylinder restrictors permit tailgate to lower slowly in case of a broken hydraulic line.

## OPTIONAL EQUIPMENT

Automatic Cycling—Cable Container Lift or Hydraulic Container Lift

| Model                         | 11R.L.     | 13R.L.     | 13R.L.     | 16R.L.     |
|-------------------------------|------------|------------|------------|------------|
| Overall length                | 15'8"      | 17'1"      | 15'7"      | 17'1"      |
| Overall width                 | 7'8"       | 7'8"       | 7'8"       | 7'8"       |
| Height above chassis frame    | 6'4"       | 6'4"       | 7'4"       | 7'4"       |
| Approx. packer weight         | 5900       | 6600       | 6720       | 7220       |
| Hopper Capacity (water level) | 1¾ cu. yd. | 1¾ cu. yd. | 1¾ cu. yd. | 1¾ cu. yd. |
| <b>RECOMMENDED CHASSIS</b>    |            |            |            |            |
| Cab to axle                   | 84         | 102        | 84         | 102        |
| GVW                           | 16.000     | 20.000     | 20.000     | 24.000     |



**NEW WAY MFG. CO.**

600 NORTHEAST 48th PLACE  
DES MOINES, IOWA 50313

Telephone

515-244-1902