

The
DEPENDABLE

The
ECONOMICAL

NEW WAY ***Minni-Packers***



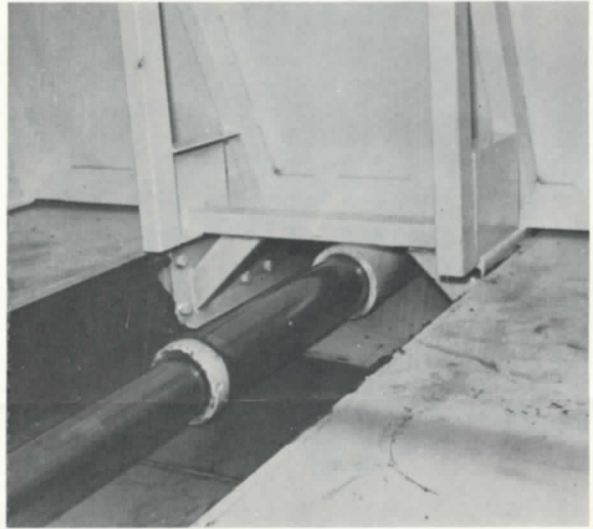
10 yd.
13 yd.
16 yd.



NEW WAY MANUFACTURING CO. 600 N.E. 48th Place - Des Moines, Iowa

NEW WAY

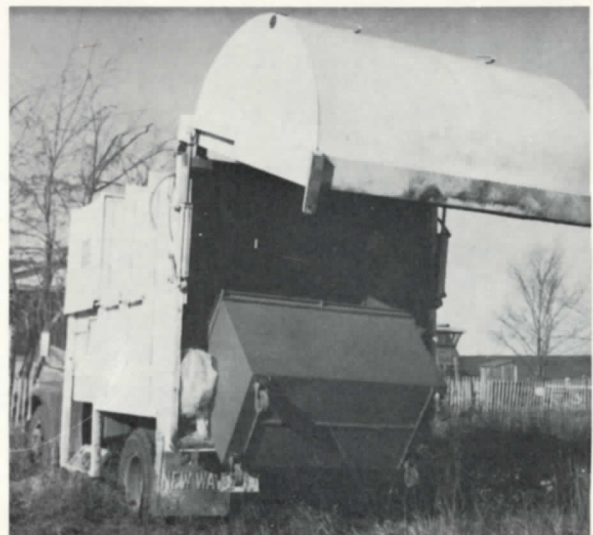
Minni-Packers



1. Packer blade 4" from front—leaves more packing space and better weight distribution.
2. Packer blade pushes all of load out. Operates from either side.
3. Extra large casted packer blade shoes, slide in 8" channels, give extra capacity, lower center of gravity, and a very sturdy packer blade.
4. Hydraulic tailgate automatic locks— just pull one lever and cylinders unlock tailgate, lift tailgate. When unloaded, push same lever and tailgate lowers slowly (restrictors in hydraulic line) and locks. Drifted locking shafts compress tailgate seal giving a water tight body.
5. Three stage—double acting packer blade cylinder compresses refuse with 56,000 lb.

13. OPTIONAL EMPTY CONTAINER HAULER

Just place packer blade in rear position, hook container to packer blade with cable provided, and as packer blade is moved forward, container is lifted into body. Eliminates need for contractor to own a small truck just to haul containers.



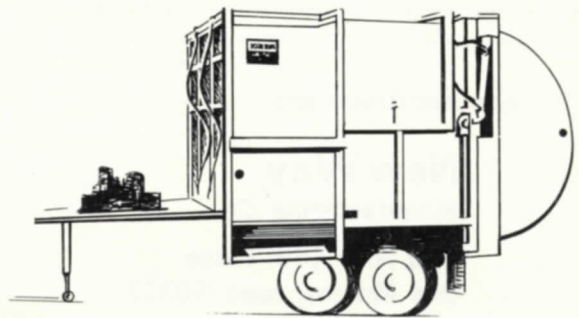
rs' New and Better Ideas



6. Top doors roll open—opens where swinging doors cannot. Wind will not blow shut.
7. Lower door lifts up—lift as body fills.
8. Minni-packer's front is open—for easier cleaning, less body weight.
9. Mounts on any truck. Buy truck from your local dealer.
10. Less weight—easier on roads and driveways.
11. Optional barrel lift—lifts and dumps 55 gal. barrel, mounts on either side.
12. Optional automatic cycle of packer blade.

14. OPTIONAL TRAILER MOUNTED

With either gas or electric power. Can be pulled with any small truck or with another Minni-Packer. Ideal for Shopping Centers, hospitals, apartments, and office buildings.



SPECIFICATIONS

BODY

Floor—10 ga.
Sides—10 ga., 11" high.
Upper sides—14 ga.
Reinforced by 2" x 3" and 3" x 3" tubing.

PACKER BLADE

10 ga. with 2" x 3" x .125 tube reinforcing.
4 cast iron runners casted to fit 8" channels x 12" long.

TAILGATE

12 ga. with 10 ga. reinforcing.

HYDRAULICS

Pump—24 g.p.m., gear type.
Controls: 40 g.p.m., manual operated. Automatic return of packer blade optional. 2,000 p.s.i. relief.
Packer blade cylinder—3 stage 4"-5"-6" diameter, double acting.
Tailgate cylinders—two 2½" diameter, double acting.
Restrictors on cylinders for slow closing of tailgate if hydraulic line breaks.

AVERAGE WEIGHTS

	FRONT	REAR	TOTAL
10 yd. on 60" C.A., 1 ton truck	3100	5100	8200
13 yd. on 84" C.A., 1½ ton truck	3940	5610	9550
16 yd. on 84" C.A., 2 ton truck	4290	6062	10,350

DIMENSIONS

	WEIGHT	HEIGHT	WIDTH	LENGTH
10 yd. packer	3741	80"	94½"	10' 9"
13 yd. packer	4292	80"	94½"	12' 9"
16 yd. packer	4619	80"	94½"	14' 3"

Specifications may change without notice.

MANUFACTURED BY:

New Way
Manufacturing Co.
600 N.E. 48th Place
Des Moines, Iowa 50313
Phone 1-515-244-1902

SOLD AND SERVICED BY: