

COMMERCIAL VEHICLE TECHNICAL SERVICES,  
53, WARREN DRIVE, EASTCOTE,  
HUISLIP, MIDDLESEX.

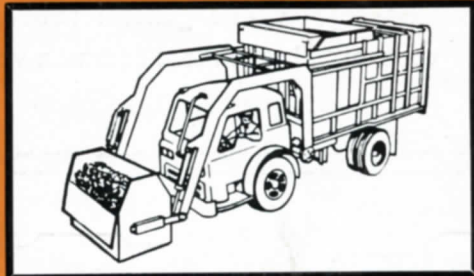
SECTION

5

CAT. 6.

# DEMPSTER DUMPMASTER

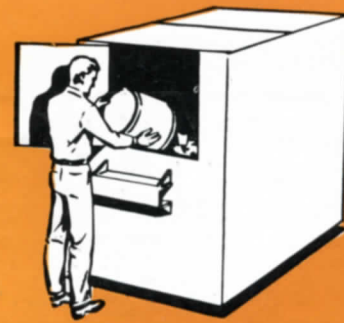
The New  
system  
of waste  
collection and  
transportation



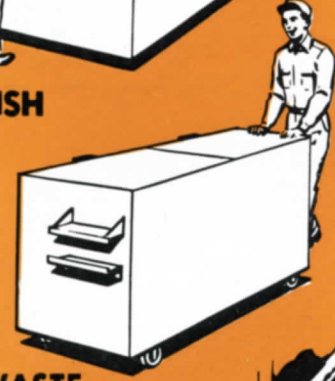
POWELL DUFFRYN



ENGINEERING CO. LTD.



**RUBBISH**



**SLUDGE**

**FOOD WASTE**



**SAWDUST**

# DEMPSTER DUMPMASTER

## will handle all types of waste materials

Whether your operation is a local authority, an industrial plant, institution or food-handling firm, you can't afford obsolete methods of waste and rubbish disposal. Use of the remarkable new Dempster-Dumpmaster System now permits you to "Containerise" your rubbish as it accumulates . . . provides enclosed temporary storage in clean, big-capacity containers.

While general rubbish, paper, cartons, etc., is the most common waste generated,

any type of material can be handled. Sludge, food waste and sawdust are just a few of the materials now being collected. We also have special types and sizes of containers for unusual accumulation situations. If your rubbish is generated indoors, easy-rolling castors carry the proper container to the accumulation point. Operational savings plus convenience and cleanliness, more than pay for the nominal cost of the Dempster-Dumpmaster System.

5/2



Dumpmaster approaches loaded container . . .



From controls inside the truck cab . . .



driver lifts container . . .



and dumps contents into the packer . . .



## in one easy movement

One of the great features of the Dumpmaster is that all loading and unloading operations are done hydraulically and controlled by the driver from his cab. In loading for example, the containers are picked up by the loading arms and are carried in one easy movement to a position immediately above the

body. Throughout this travel the containers remain closed and in a more-or-less upright position, thus preventing the loads from being scattered by wind. Opening of the lids, and emptying of the containers, occur only when containers are inverted.

5/3



empty container is returned ...



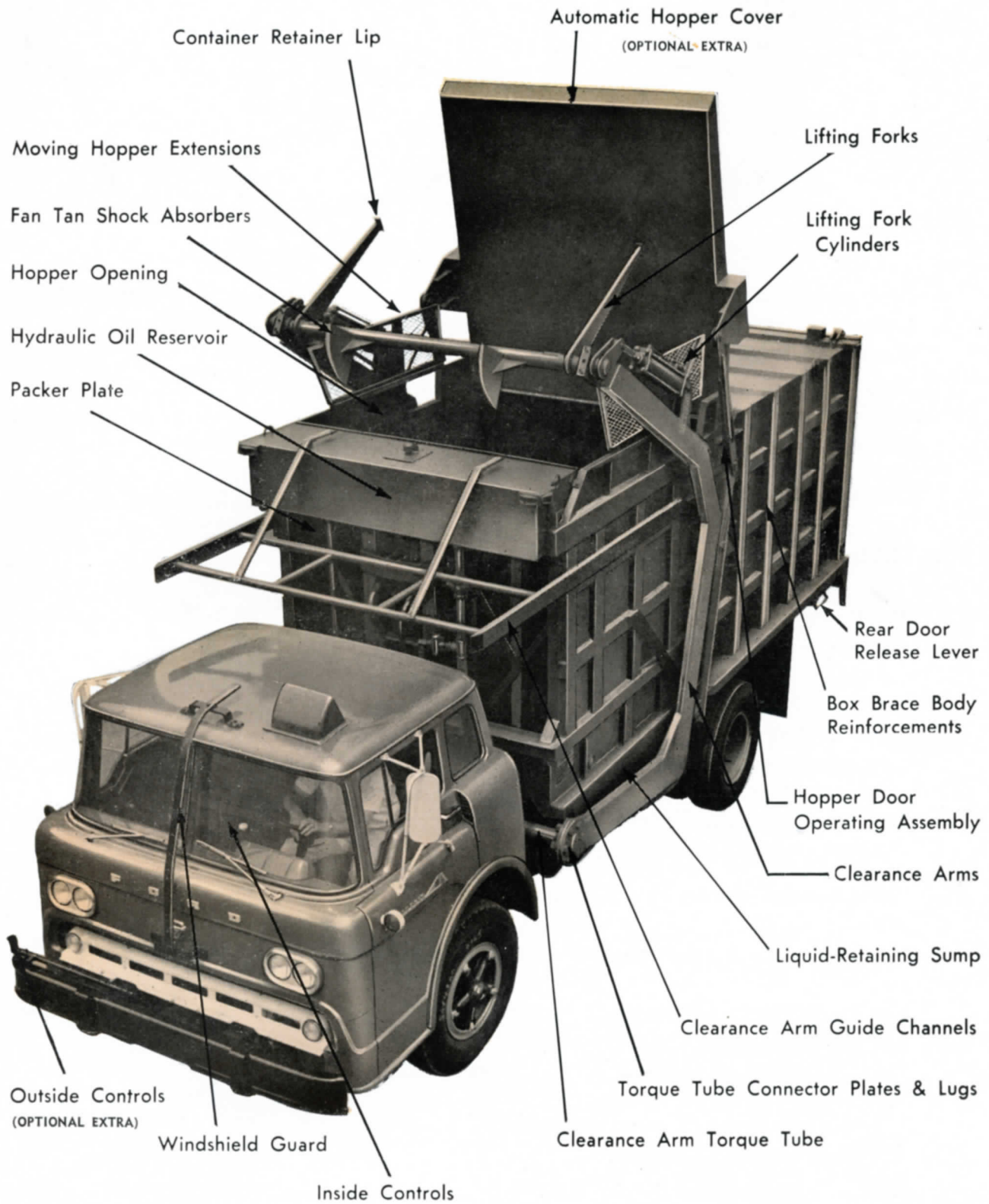
arms are disengaged ...



material is compacted hydraulically ...



as Dumpmaster moves to next container ...





## THE DUMPMASTER RANGE

Dumpmaster Units are of 18, 24 and 30 cu. yd. capacities. Hydraulic compaction, using a thrust of 60,000 lb., is effective over the whole cross-sectional area of the body, making volume reductions of 2 : 1 in the case of medium density refuse and greater in the case of lighter materials.

The power-operated lifting arms will pick up, and empty into the body, loads of from 1,500 to 3,000 lb.—depending upon the arms used—in containers of from 1 to 6 cu. yd. Adapters for similarly handling standard cylindrical, 1 and 1½ cu. yd. containers used by local authorities, are also available.

**The 18 DB DUMPMASTER, with C.A. 15 Arms,** will handle loads of 1,500 lb. in containers of from 1 to 3 cu. yd. to a gross payload of 4¼ tons on a 4-wheeled, 14-ton GVW chassis. Units on lighter chassis, with trailing axles, are being developed to handle similar and heavier payloads.

**The 24 DB DUMPMASTER, with C.A. 30 Arms,** will handle loads of 3,000 lb. in containers of from 1 to 6 cu. yd. to a gross payload of 7¾ tons on a 6-wheeled, 20-ton GVW chassis.

**The 30 DB DUMPMASTER,** without lifting arms but mounted on an 8-wheeled, 24-ton GVW chassis, is most suitable for bulk hauling crude refuse or tailings from depot to tip. Its 30 cu. yd. nominal capacity compaction body will compress and transport loads of 60 loose yards of medium-density refuse—more in the case of lighter materials—to a total weight of 12 tons.

Discharge on all models is effected by the compaction ram, operating over the full cross-sectional area of the body, through the rear door. Tipping, and instability at the tip face, are both avoided.

**Maintenance**—This is limited to the topping-up of the hydraulic fluid and greasing the ram-plate sides at weekly intervals.

Units are ruggedly constructed from heavy-gauge steel plate and give life-long service.



One Dumpmaster can serve many blocks of flats and is easily adapted to handle existing containers.



An ideal application for the one man operated self-loading Dumpmaster are large industrial plants.

# DEMPSTER DUMPMASTER

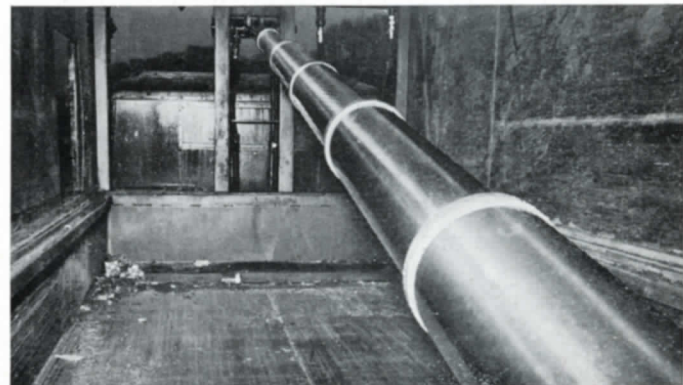
## COMPACTION BULK HAULER



The 30 DB Dumpmaster compaction bulker is designed for bulk hauling crude refuse, or tailings from depot to tip, for servicing large, open, industrial sites or for use as a transfer loader.

Refuse is loaded via the hopper, into the forward part of the 30 cu. yd. body. After each 7-10 yd. of loading, a 9-in. dia., six-stage, hydraulic ram, exerting a force of 60,000 lb. against the full face of the ram-plate, compresses the material against the rear door. Volume reductions in the order of up to 3:1 are affected.

Discharge is effected by releasing the tail gate, the refuse being ejected by the ram-plate moving through the full length of the body. Tipping, and instability at the tip face, are both avoided.



Above Heavily reinforced rear door. Note how packer plate guide shoes hold door open to assure escape of all material. Below Power for the six-stage hydraulic ram is provided by a 36 gallon hydraulic pump operated from the power take off.



# POWELL DUFFRYN ENGINEERING CO LTD

CAMBRIAN WORKS • MAINDY • CARDIFF

TELEPHONE: CARDIFF 29611 TELEGRAMS: PEEDENG, CARDIFF  
BRANCH OFFICES AT LONDON, MANCHESTER AND GLASGOW