



REAR LOADERS

200 300 SERIES



SANITATION FOR THE NATION

PAK-MOR

MANUFACTURING COMPANY

TAILGATE — Wide opening tailgate cuts total down time. Tailgate design in combination with other components increases efficiency and reduces total down time. Tailgate is hinged at the top and the lower part of the tailgate is hinged at the bottom. The entire power assembly is controlled by a single control valve as desired. It is a fast and simple operation. The tailgate is constructed with wide heavy plate to be emptied at the

BODY — The new and modern design of the PAK-MOR Loadliners feature deep sectional panels which offer a light-weight and rigid construction allowing larger legal payloads without sacrificing body strength and rigidity.

EJECTION PANEL — The ejection panel is designed with deep sectional construction providing strength and rigidity and is equipped with bronze bushing rollers insuring smooth and easy movement free from binding or hangup. The ejection panel cylinder is double-acting, angularly displaced providing effective continuous movement of ejection panel in either direction.

Introducing the



HYDRAULIC SYSTEM — The hydraulic system consists of a completely sealed fluid system of 40 gallons, always providing a column of fluid above the pump, reducing pump cavitation. A full flow filter on the inlet to the reservoir, and a magnetic tank trap extending into the reservoir reduces contamination from foreign matter being suspended within the system. The hydraulic pump has a displacement of 45 GPM at 1800 RPM and a valve relief at 1200 PSI in the case of the 300 Series, and 30 GPM at 1800 RPM at 1800 PSI in the case of the 200 Series. In both cases, adaptors are provided for engagement of hydraulic hoses. All hoses are J.I.C. approved high-burst capacities.

POWER PACK — A total compact power pack is mounted behind the packer assembly, offering efficiency for maximum effective force. The power pack exerts 45,000 lbs. @ 1800 PSI exerted through the packer assembly is mounted on a hardened steel guide rails. The packer assembly is heavily reinforced with $\frac{3}{16}$ " plate for strength and structural angles.

working space provided around the tailgate. A unique split tailgate with location of major components and time. The upper half of the tailgate is lifted upwardly, exposing packer swing cylinders and control mechanism and maintenance become easier. The PAK-MOR Loadliners are hoppers enabling two 50 gallon drums same time.

CONTROLS — The standard control configuration is of the lever hydraulic type, offering a two-phase cycle. The first half of the cycle terminates just above the hopper edge as a safety feature, reducing possibility of injury to operating personnel, necessitating the control to be actuated the second time for completion of the cycle. A single pushbutton switch or a lever hydraulic means is also available to offer a fully automatic cycle. Separate means are available to allow complete independent control of pack and sweep action to accommodate special loading problems. Dual controls are also available.



LOAD LINER Series - W

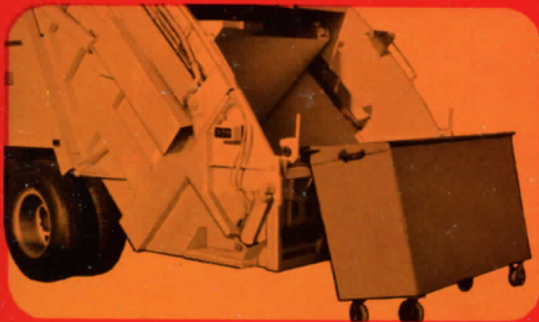
on force of 65,000 lbs. @ 1150 PSI is mounted outside the tailgate and the most favorable compaction geometry. The 200 Series features a total force of thru two 4" hydraulic cylinders. The rigid slide frame precisely guided by packer plate is constructed of $\frac{3}{16}$ " plate, formed members, $\frac{3}{8}$ " plate, 5" tubing

HOPPER VOLUME — A large open hopper capacity of 2+ yards on the 200 Series and 3+ yards on the 300 Series maximizes loading of large commercial and industrial refuse, large containers and reduces normal loading time. The loading height is approximately 3" below frame level. The side walls are constructed from $\frac{3}{16}$ steel plate, supported by formed members to prevent deformation. The hopper bottom is constructed from $\frac{1}{4}$ " high tensile steel plate.

OPTIONAL FEATURES

The **PAK-MOR** Loadliner offers dual approach to a multi-purpose containerization.

- 1** **ROLL BAR DEVICE** developing 1500 lbs. will accommodate 1 through 3 yard containers.



- 2** **LINE PULL WINCH** insures adequate lifting capacity to handle 1 through 6 cu. yard containers.



- 3** A **PACKER SAFETY DOOR** which moves in advance of a compaction cycle is available for additional safety.



- 4** **AIR AND WATER-COOLED AUXILIARY ENGINES** are available, ranging from 36 to 60 H.P. capacities.



Workhorse of the Pak-Mor Line

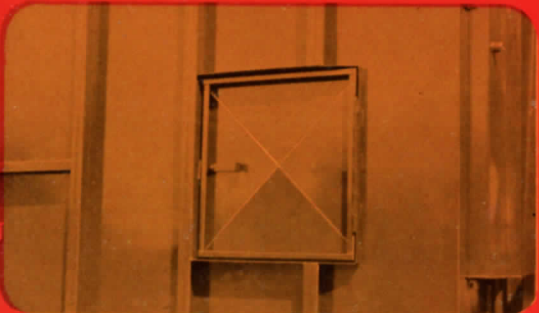
- 5** **PUSHBUTTON CONTROLS** are available which offer a complete automatic cycle as well as the kill switch feature.



- 5** **LEVER HYDRAULIC CONTROLS** providing a total automatic cycle are available at user's option.



- 6** A **SIDE ACCESS DOOR** with the dimension of 30" x 30" is available on either or both sides, enabling additional access to inside of body.



- 7** **TRAILER COMBINATIONS** are available with the additions of running gear, stiff legs and power combinations.



POWER CYCLE

PAK-MOR

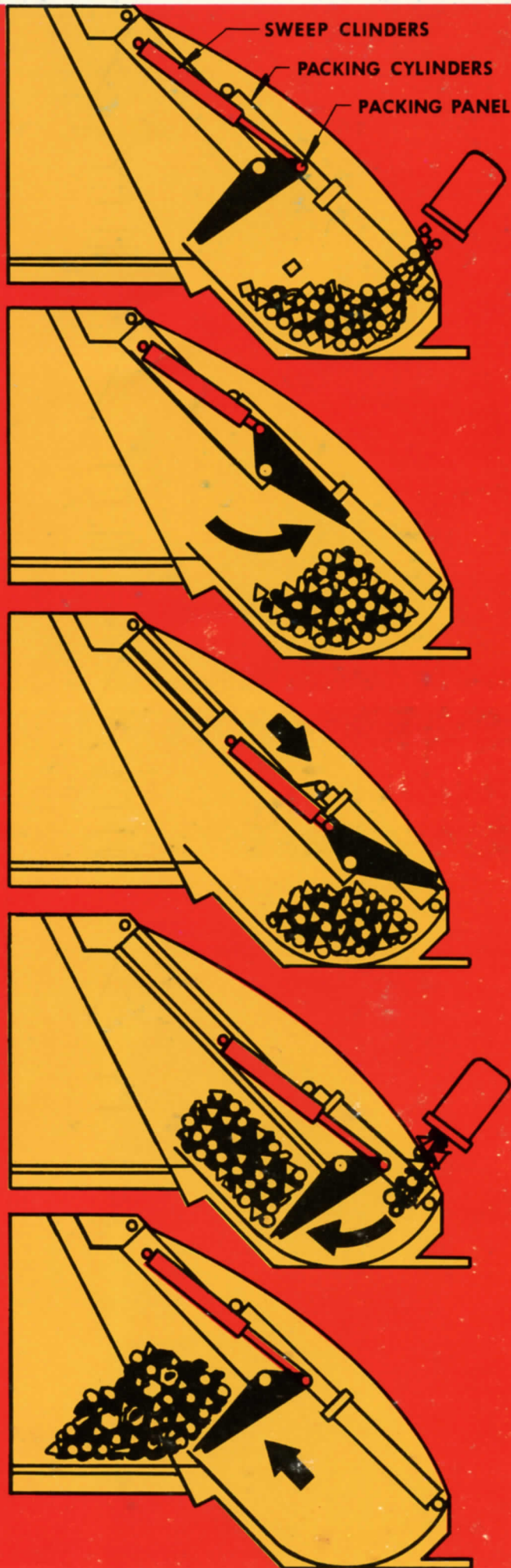
1 When the large cross-sectional hopper area is filled, either the push-button or lever control is actuated to begin cycle.

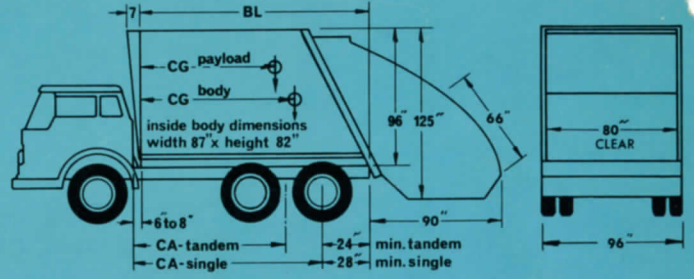
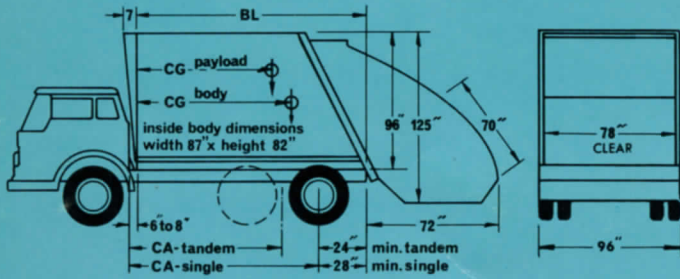
2 With actuation of control, sweep cylinders retract and rotate packing panel outwardly or to the open position.

3 Packing cylinders located on outside of the tailgate retract, moving the packing panel to position 3. The cycle then stops automatically at a point just above the rear edge of the hopper as a safety feature.

4 The second phase of the cycle is then actuated thru the control, extending the sweep cylinders, rotating the packing panel to the inward or packing position. As packer passes thru tailgate edge, hopper can be reloaded in approximately 15 seconds.

5 The packing cylinders which are located behind the packer panel, offering maximum effective compaction effort, power the packing panel to the termination of its travel.





MODEL	RL214	RL216	RL218	RL220	RL225
Capacity, Cu. Yds.	14	16	18	20	25
CA, Single	92"/96"	102"/108"	115"/121"	128"/134"	—
CA, Tandem	—	—	—	105-115	150-160
BL, Body Length	118"	131"	144"	157"	198"
CG, Body	79"	85"	93"	102"	120"
CG, Payload	64"	70"	77"	84"	99"
Body Weight Lbs.	11,190	11,465	11,700	11,940	12,300

Typical Load Distribution* (650 Lbs. Per Cu. Yd.)

Front Axle (Lbs.)					
Pak-Mor	1,090	1,565	1,900	2,040	1,850
Payload	1,980	2,590	3,150	3,700	4,420
Total	3,070	4,050	5,050	5,740	6,270
Rear Axle (Lbs.)					
Pak-Mor	10,100	9,900	9,800	9,900	10,450
Payload	7,120	7,810	8,550	9,300	11,830
Total	17,220	17,710	18,350	19,200	23,280

*Chassis Not Included.

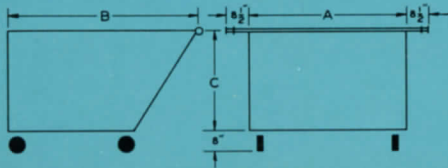
MODEL	RL320	RL325	RL330
Capacity, Cu. Yds.	20	25	30
CA, Single	128"/134"	—	—
CA, Tandem	115"/125"	150"/160"	185"/195"
BL, Body Length	153"	198"	231"
CG, Body	110"	141"	169"
CG, Payload	81"	99"	116"
Body Weight Lbs.	13,500	14,090	14,700

Typical Load Distribution* (800 Lbs. Per Cu. Yd.)

Front Axle (Lbs.)			
Pak-Mor	—200	0	400
Payload	3,800	4,900	6,800
Total	3,600	4,900	7,200
Rear Axle (Lbs.)			
Pak-Mor	13,700	14,090	14,300
Payload	12,200	15,100	17,200
Total	25,900	29,190	31,500

*Chassis Not Included.

CONTAINERS



Size	Length A	Width B	Height C	Opening	Weight
1 Cu. Yd.	63"	24"	37"	24"x63"	459 Lbs.
2 Cu. Yd.	60"	53"	39"	53"x60"	465 Lbs.
3 Cu. Yd.	60"	73"	39"	60"x73"	650 Lbs.
4 Cu. Yd.	60"	96"	39"	60"x96"	823 Lbs.
6 Cu. Yd.	66"	110"	46"	66"x110"	1157 Lbs.

Call or write for more information



1123 S.E. Military Dr.
P.O. Box 14147
Tel. 512/923-4317
San Antonio, Texas 78214

The products illustrated in this catalog are protected by United States and Foreign patents, patents pending and applied for. Illustrations and specifications are not binding as detailed as PAK-MOR reserves the right under the company's product development program to change design or construction details and to furnish equipment when thus altered without reference to illustrations or specifications presented herein, and supercedes all previously published information.

LINKED IN SERVICE...
TO THE AMERICAS AND WORLDWIDE



TELEPHONE: 512-923-4317
TELE: 512-923-4317
TELETYPE: 512-923-4317

1123 S.E. Military Dr.
P. O. Box 14147
San Antonio, Texas 78214

A COMPLETE LINE OF REFUSE COLLECTION EQUIPMENT



STATIONARY PACKER



3RL REAR LOADER



SIDE LOADER



FRONT LOADER

Distributed by:

PMLL