



Design and rugged dependability
make manual side loading a snap.

H-Model Side Loader

PAK-MOR[®]
PAK-MOR[®]
PAK-MOR[®]



PAK-MOR[®]
PAK-MOR[®]
PAK-MOR[®]
DOING A BETTER JOB THROUGH BETTER DESIGN

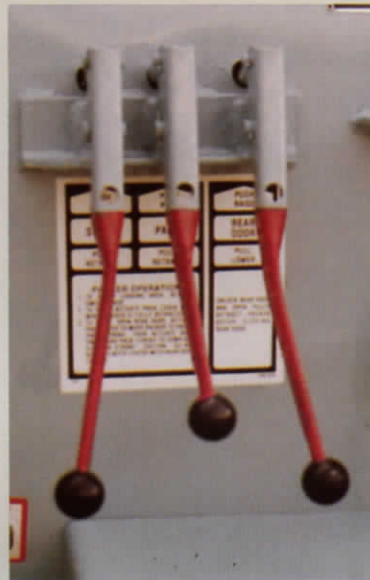
Pak-Mor's rugged H-Model Side Loader for over 40 years. Built



Automatic side closure doors.
Pak-Mor's automatic side closure doors eliminate manual openings and closings thus speeding up route time. Each door is equipped with a skid-resistant loading step and handrails.

Automatic rear door locks. (optional)

One lever hydraulically actuates the top-hinged hydraulic rear door and locks. The operator can unlock, raise, lower, and relock the rear door while remaining at the front of the body, thus allowing a faster and easier one-man operation.



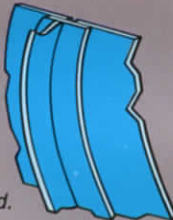
Packer and rear door controls.

Positive lever type controls are located on the streetside and the curbside of the body. The controls actuate the packer and rear door (and the rear door locks if equipped with the optional automatic rear door locks). The chassis engine throttle is automatically actuated to accelerate the engine to the proper RPM level.

More from Pak-Mor...

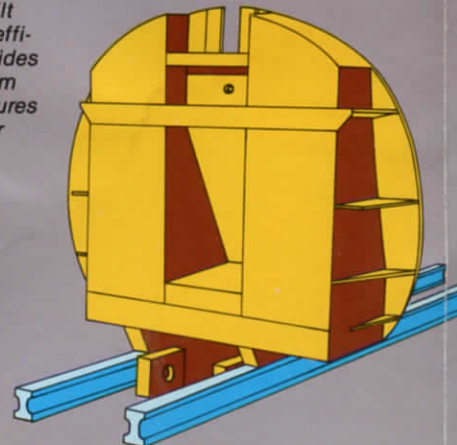
Greater body strength.

Pak-Mor is built better for longer service. A series of rugged "T" beam ribs are welded to the body permitting it to easily withstand high compaction forces without distortion. Pak-Mor's cylindrical design provides a structure that's equally resistant to stress throughout its entire circumference. Weakness in corners and flat walls is avoided.



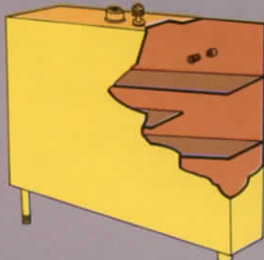
Packer plate.

Made of $\frac{1}{2}$ " and $\frac{3}{8}$ " steel, Pak-Mor's packer plate resists buckling and wear. It's built to work longer and more efficiently. The packer plate rides on two extra hard vanadium 6-inch "I" beams. This insures true alignment and greater protection against wear.



Long life hydraulic system.

Pak-Mor's reservoir is located high above the pump to assure a better flow of oil to the pump and prevent "air bubbling"—a troublesome wear factor. Baffling within the tank enhances oil circulation and reduces heat—a major cause of wear. The tank is equipped with a magnetic tank trapper to remove impurities in the hydraulic system. The high quality gear pump is less susceptible to wear and pitting caused by impurities in the system. Only the highest quality, precision valves available are used. A return line filter and a suction line filter provide additional protection.



er has been making profit history It better to last longer.



Riding step with handrails.

The Pak-Mor Side Loader is equipped with skid-resistant riding steps with handrails that are installed between the cab and the body.

Easy accessibility to components.

Hydraulic components such as hoses, valves, cylinders, filters, the reservoir and the pump are readily accessible. This makes it easier to spot and repair component problems, thus eliminating downtime and cutting repair costs.

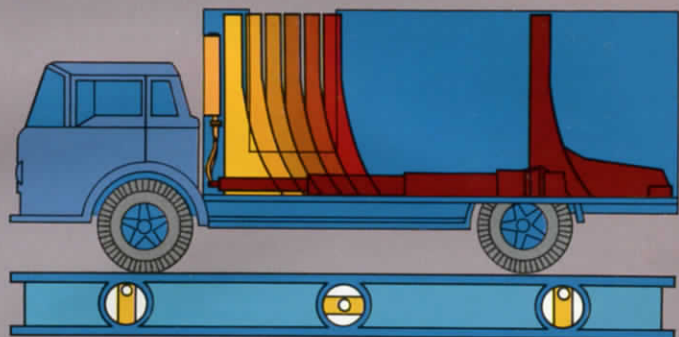
21 square foot hopper opening.

A 21 square foot hopper provides unobstructed access to handle large bulky items and brush. The low loading height of 17" above the chassis frame eases loading yet provides maximum hopper volume.



100% compaction that's on the level.

The horizontally mounted packer cylinder operates parallel to the body floor, concentrating in excess of 90,000 lbs. of force directly into the load while imposing no destructive loads on the body floor nor loss of compaction efficiency. Angled compaction cylinder systems used by other designs push against the body floor and have to work harder to deliver the same amount of compaction as a Pak-Mor horizontal cylinder.



Multi-stage cylinder.

Pak-Mor's rugged cylinder is a multi-stage double-acting cylinder. Each sleeve is chrome plated with 10 inch (254 mm) to 12 inch (304.8 mm) overlap.



Rapid sweep cycle.

Pak-Mor's rapid sweep cycle clears the hopper area in 10-12 seconds reducing route time. The full-length compaction cycle is utilized for compacting between stops. The ejection cycle is actuated when dumping the load is necessary.

2 Manufacturing Plants in the U.S. 150 Worldwide Distributors.



National and Worldwide distributors to serve you no matter where you are.

A global distributorship network brings Pak-Mor within easy reach of any user anywhere in the world. Information on new product additions and the ability to order parts through this distribution system makes Pak-Mor internationally recognized in the solid waste disposal industry.



THE PRESIDENT'S E
CERTIFICATE FOR EXPORTS



Side Loaders



Rear Loaders



Front Loaders



Transfer Trailers



Lo Boyes



Stationary Packers

The products illustrated in this catalog are protected by United States and Foreign patents, patents pending and applied for. Illustrations and specifications are not binding as detailed as Pak-Mor reserves the right under the company's product development program to change design or construction details and to furnish equipment when thus altered without reference to illustrations or specifications presented herein, and supersedes all previously published information.

1123 S.E. Military Dr. P.O. Box 14147 San Antonio, Texas 78214 1-512-923-4317 Telex: 767429
Pak-Mor Worldwide, Inc. P.O. Box 79 9548 Matzingen, Switzerland Telex: 76211
PAMO 41-54-53.18.94

PAK-MOR® PAK-MOR® PAK-MOR®

DOING A BETTER JOB THROUGH BETTER DESIGN

All PAK-MOR models have been certified as complying with standards established by the American National Standard Institute (ANSI) Z 245.1-1984

PMH 870101