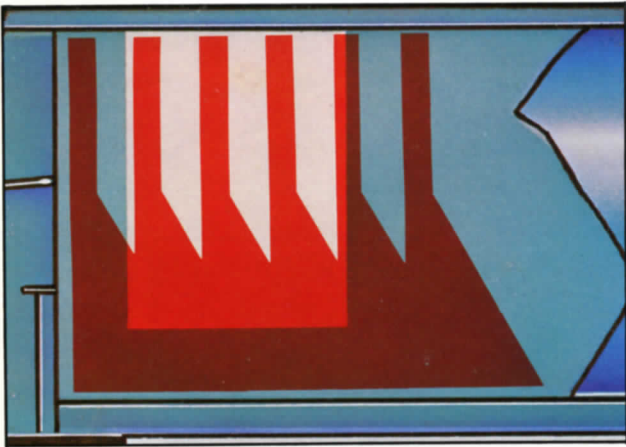
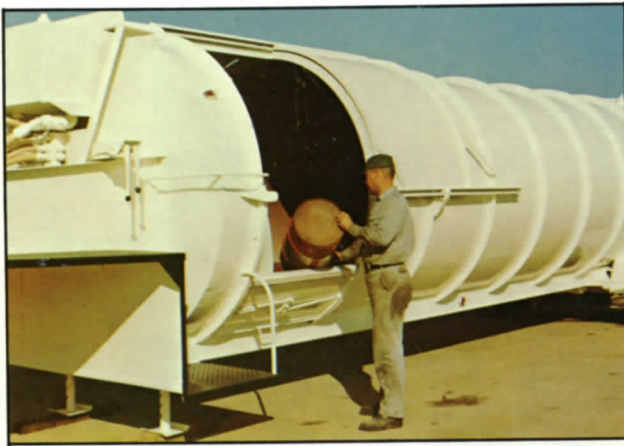


**Pak-Mor Lo Boyes.
Bigger payloads
thru advanced design.**

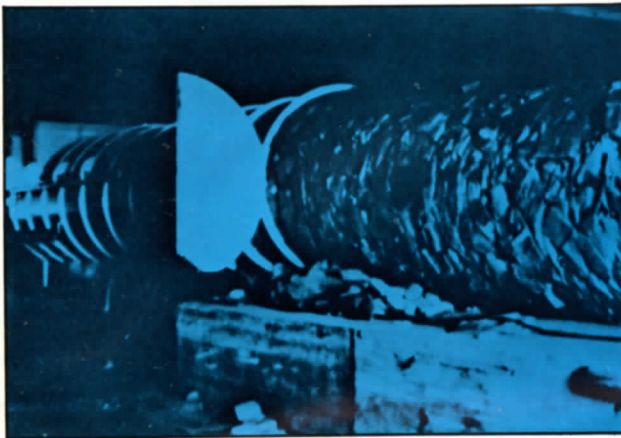




Dynamic sweep action clears the loading area at a rate of 10 feet per second speeding up route servicing.



Standard side loading capability with low loading and deep hopper area - maximum flexibility.



Get a load of this maximum total compaction.

BIGGEST PAYLOADS THRU ADVANCED DESIGN

- Cylindrical body design provides maximum stress distribution withstanding tremendous pressures necessary for heavy, densely compacted loads.
- Horizontal telescopic cylinder directs a perpendicular force of 90,000 pounds to the packer plate.
- Dozer type packer plate thrusts refuse upward attaining maximum uniform compaction.

BUILT-IN LONG LIFE

- Hard chrome cylinders with 18-22-inch overlapping sleeves insure non-leaking, longer packing seal life virtually eliminating cylinder malfunctions.
- Trunnion slides and Vanadium 50 I Beam guide both cylinder and packer plate in perfect alignment.
- Hydraulic system components are readily accessible for easy maintenance, and double sized 80 gallon reservoir dissipates heat, assuring efficiency and longer life.

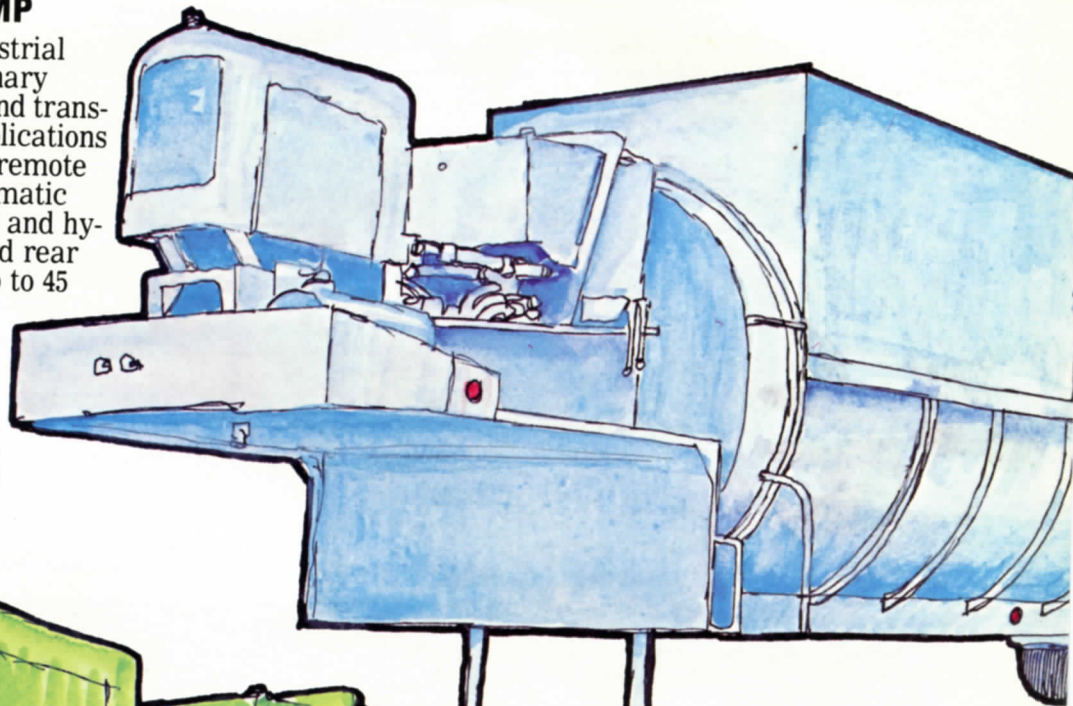
PROFITABLE OPERATION

- Large low loading openings on both sides keep men away from street traffic while assuring fast, route times.
- Dynamic sweep action clears the loading area at a rate of 10 feet per second speeding up route servicing.
- Unloads entire load quickly and cleanly without tilting, capsizing or low overhead problems.
- Route shrinking 28, 32 and 38 yard capacities allows daylong route consolidating into one money-saving landfill trip.
- Proven performance in cutting time and operational costs has been proven by our users; Testimonials are available on request.



HANDY DUMP

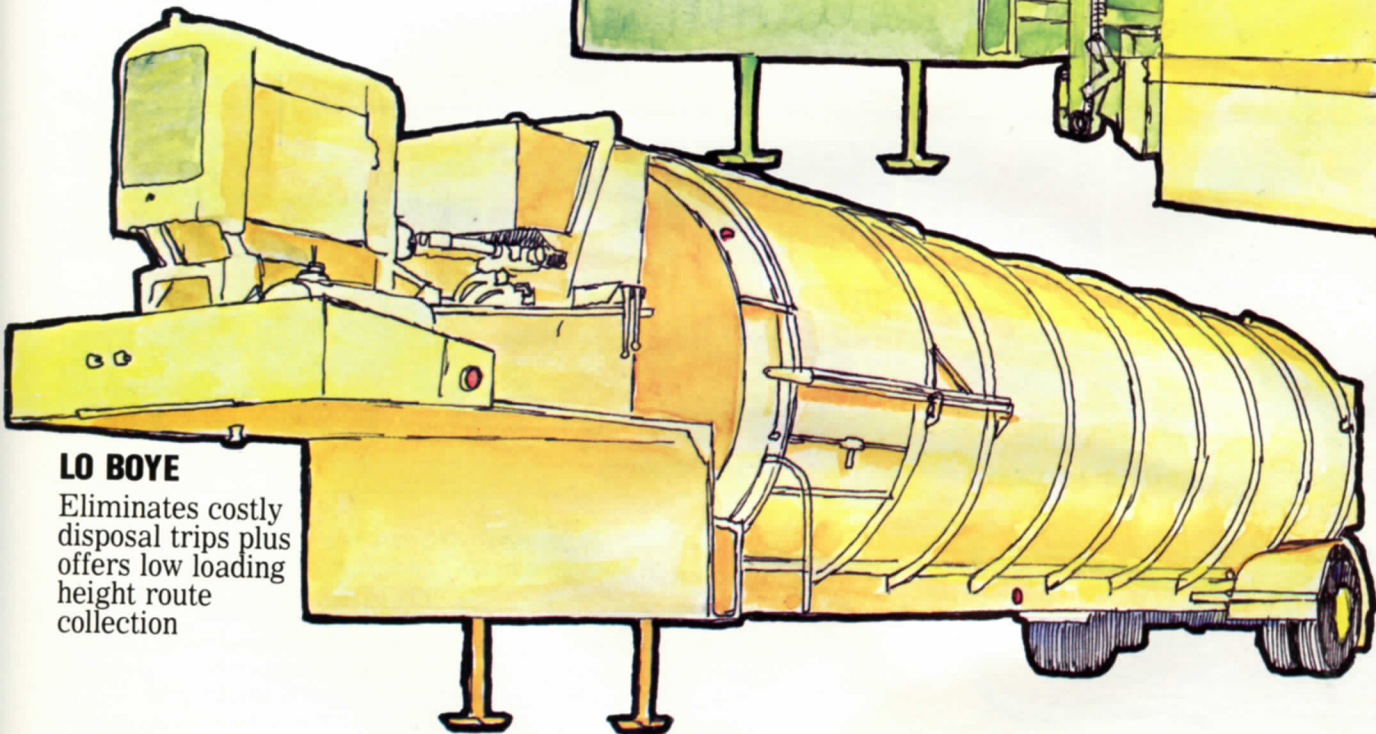
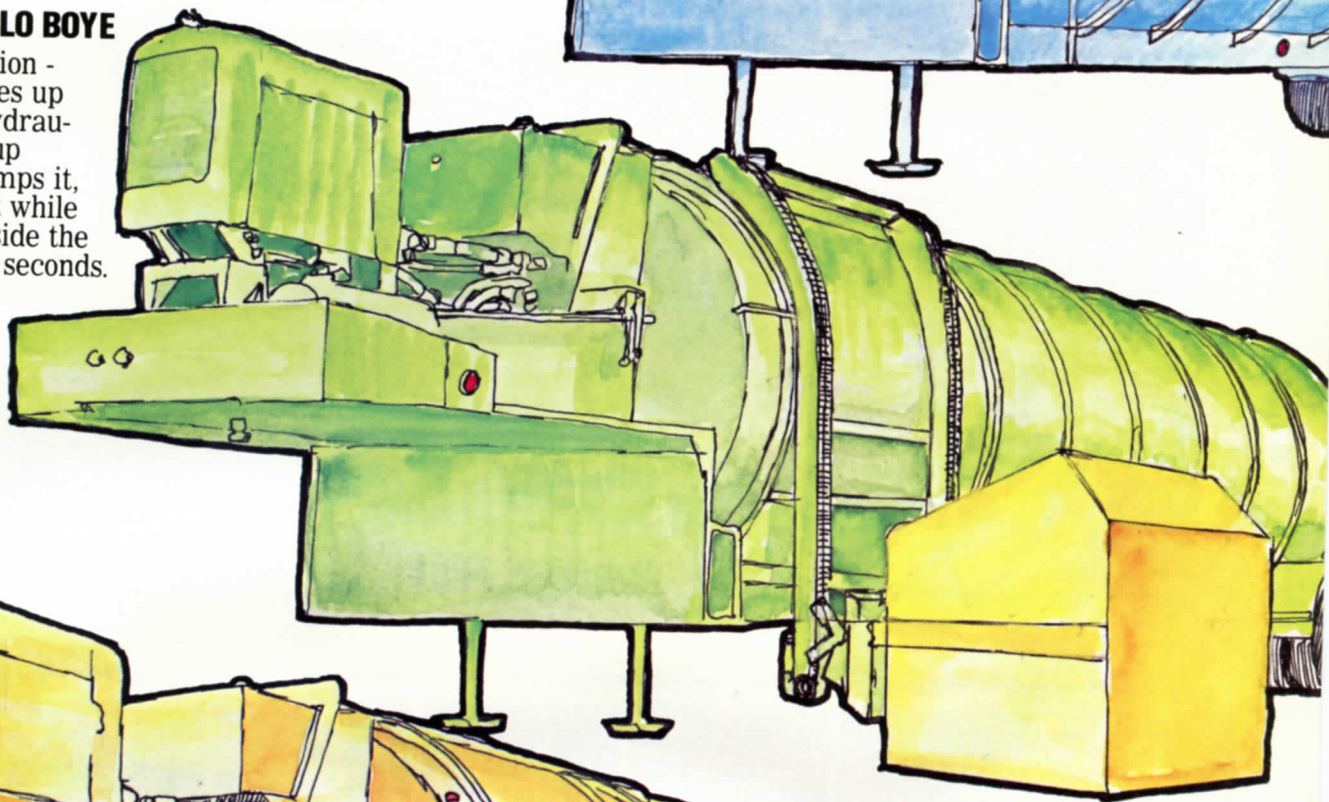
Ideal for industrial mobile stationary compacting and transfer trailer applications with optional remote controls, automatic sweep cycling and hydraulic top and rear doors - and up to 45 cubic yards.



LO BOYE APPLICATIONS

RETRIEVER LO BOYE

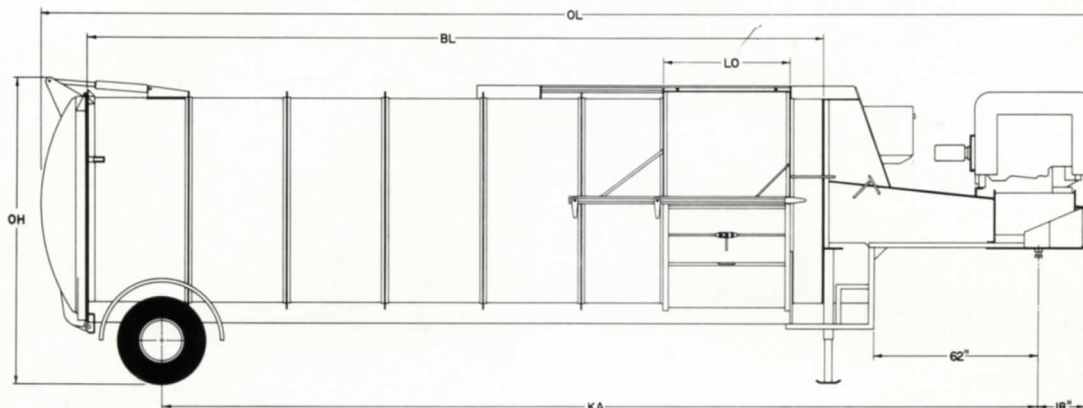
Containerization - operator drives up along side, hydraulically picks up container, dumps it, and returns it while remaining inside the cab - all in 30 seconds.



LO BOYE

Eliminates costly disposal trips plus offers low loading height route collection

SPECIFICATIONS



All PAK-MOR Lo Boyes have been certified as complying with standards established by the American National Standards Institute (ANSI 245.1-1975).

	SINGLE			TANDEM		
LO BOYE	28 cu. yd.	32 cu. yd.	38 cu. yd.	32 cu. yd.	38 cu. yd.	45 cu. yd.
Overall Length-OL	33'3"	36'3"	43'4"	36'3"	43'3"	40'7"
Body Length - BL	24'	28'6"	33'6"	28'6"	33'6"	31'
King Pin To Axle - KA	27'3"	30'4"	33'4"	23'1"	33'4"	31'9"
Trailer WT. Empty	14,800 #	15,300 #	16,200 #	17,025 #	17,935 #	18,900 #
Overall Height - OH	9'2"	9'2"	9'2"	9'10"	9'10"	10'1"
HANDI-DUMP						
Overall Height - OH	11'	11'	11'	11'	11'8"	11'8"
Trailer WT. Empty	15,300 #	15,800 #	16,700 #	17,575 #	18,500 #	19,450 #
Overall Height - OH	11'	11'	11'	11'8"	11'8"	12'1"

Overall Width — OW - 8'
 Load Opening — Lo Boye - 3'9", Handi-Dump 8'4"
 Inside Diameter — 6'9", 45 cu yd - 7'2"
 Power Unit - 100 HP Engine, Pump - 48 GPM

Single Axle — 20,000 # capacity,
 Tandem - 40,000 # capacity
 Sweep action on cylinder
 Tractor CA-72", 5th Wheel height - 48"



Side Loaders

Rear Loaders

Front Loaders

Transfer Trailers



The products illustrated in this catalog are protected by United States and Foreign patents, patents pending and applied for. Illustrations and specifications are not binding as detailed as PAK-MOR reserves the right under the company's product development program to change design or construction details and to furnish equipment when thus altered without reference to illustrations or specifications presented herein, and supersedes all previously published information.

1123 S.E. Military Dr. San Antonio, Texas 78214
 P.O. Box 14147 1-512-923-4317 Telex: 767429