



HANDI-LIFT CONTAINER SYSTEM



*cuts costs
route time
manpower!*

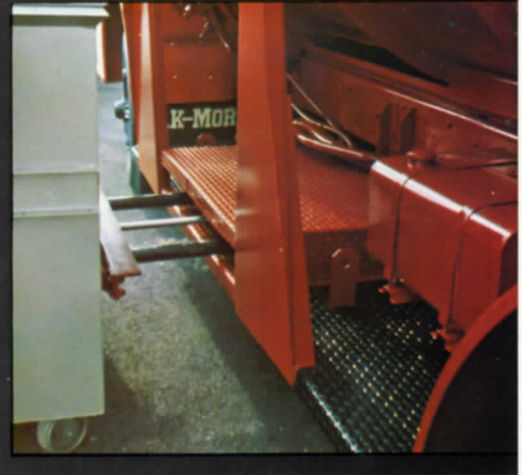
DOES THE WORK OTHER CONTAINER SYSTEMS REQUIRE YOU TO DO . . .

Reach-Ability

Cable Attachments reach out over six (6) feet to enable you to hook up container — you do not have to drag or roll the container up to the side of the PAK-MOR! Time interval is shortened — work fatigue is lessened — and overall servicing time is minimized! Drive up — Hook up — Empty — and, on to the next container. PAK-MOR's Reach-ability Feature cuts down time required for handling each container and enables you to handle more containers in a shorter period of time! Time is Money — and this PAK-MOR Design-Generated Feature helps you cut your costs for handling each container!

Container Positioning Arm

Hydraulically actuated arm sets container out from side of unit after emptying. Does away with operator manhandling containers — effortlessly returns containers to generation points. Control lever is located by Handi-Lift controls so that Positioning Arm can be readily set into motion as container descends. Allows one smooth, continuous movement of container down side of unit to its receiving point.



Hopper Closure Door

Completely encloses top loading hopper eliminating any possibility of littering or scattering when unit is in motion. Offers a wind shield while containers are being emptied — raises clear of loading opening giving ample clearance to containers. Hydraulically actuated by a separate control. Sturdy construction insures trouble-free operation and enables complete body capacity to be used.

Container Wash-Out System

Comprises eighty (80) gallon water tank, 25 feet of hose and gun grip-type nozzle for ease and accuracy in spraying containers after emptying. Sufficient pressure can be brought into play to dislodge and wash away material in bottom or sides of container. Disinfectant and/or deodorant can be mixed with water to effect sanitary and pleasing condition of container after servicing.

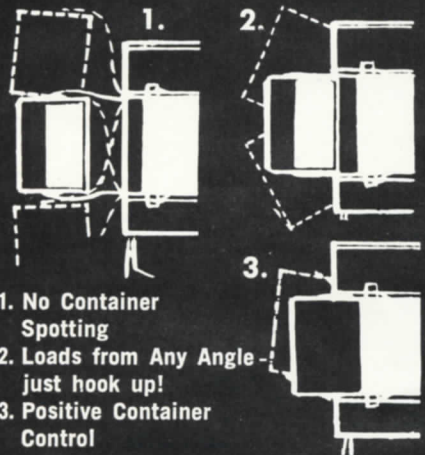


**DESIGN-
GENERATED
FEATURES**

HANDI-LIFT CONTAINER

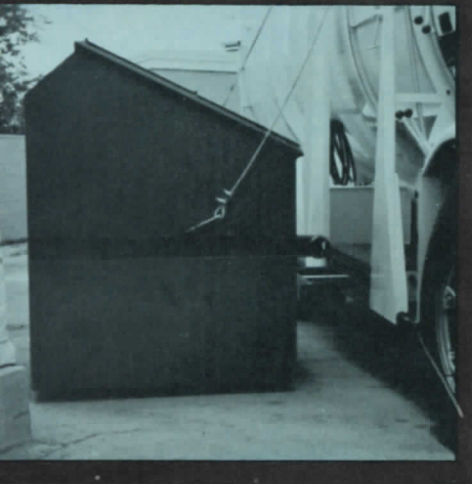
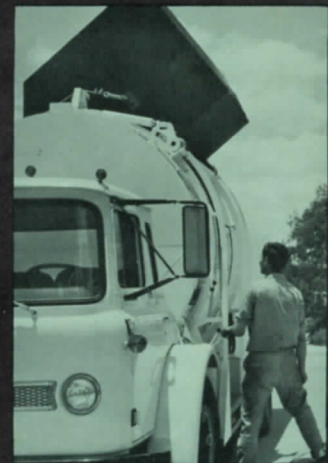
A Practical Method of Reducing Costs

By Eliminating the Excess



- Eliminates Extra Equipment Normally Required
- Eliminates Manpower Requirements — Is a One-Man Operation —

Denison, Texas Collection Costs Cut to Slightly over 9¢ per Cu. Yd. — Same Savings Can Be Yours!



Complete and Positive Control of container from hook up, to emptying, to release! Lock up hooking system and cable attachment insure constant container control throughout!

Container empties directly downward into loading area — and entire cycle requires only 30 seconds! Kick-out Arms hydraulically guide container in unloading and return it from dumping position.

ANALYSIS OF PAK-MOR HANDI-LIFT OPERATION CITY OF DENISON, TEXAS, MAY 1963

Number of Days worked during the Month: 27 Days • Number of Containers handled during Month: 2,117 • Average number of containers handled or serviced per Day: 78.4 • Total Monthly Operating Costs: \$617.95 • Cost of Operation per Day (27 Days): \$22.89 • Cost for handling or servicing each container: .2919c (\$617.95 ÷ 2,117 Containers) (just under 30c) • Total number of hours worked in Month: 266.15 Average number of hours worked per Day: 9 hrs. 51 mins. • 973 miles were traveled during the month - (973 miles ÷ 2,117 containers): .46 miles per container Or, under 1/2 mile per container for entire month and this includes traveling to the dump. • 434.8 gallons of gasoline were used during month ÷ 27 Operating Days: 16.1 gals. of gasoline used per day — which averages out to Five (5) Containers to the Gallon. • There are 121 containers of 2 - 3 and 4 yard capacity in the City's operation. The average yardage of all containers is: 2.8 yards (342 total yardage ÷ 121 containers). • Since the average number of containers handled or serviced per day is 78.4 containers — this figure multiplied by 2.8 yards — shows that 219.5 cubic yards of material is handled per day by one-unit of this System. This is a one-man operation, with Handi-Lift mounted on driver's side of PAK-MOR Body. • On the basis of the above — Cost to handle One Cubic Yard of refuse is: 10.427c per yard - JUST OVER ONE DIME!

New Analysis reveals Collection Cost per Cubic Yard Now slightly over 9c - And after all — isn't a System which costs the Least to operate, really the Most Significant Point of Consideration!

PEAK
DOM

FLAT
TOP



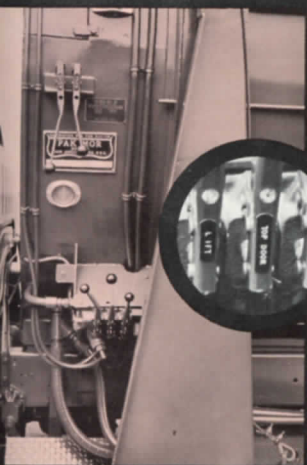
Under development is reserved construction equipment with various attachments sent all previous information.

INER SYSTEM . . .

Reducing Refuse Collection Costs

Preventing Problems Leading to Higher Operating Costs!

- Eliminates "Clean Up Campaign" At Each Stop
- Eliminates Extra Time Normally Required To Empty Barrels, Bins and Storage Rooms
- Eliminates Unsightly Appearance of Littered Streets and Alleys of Downtown Areas



Controls instant, positive dead-man type. Immediately responsive with defined settings — Are either completely engaged or disengaged — A definite Safety Feature guarding entire operation!

Handi-Lift System "Pay Off" is represented by dense loads every time! Superb hydraulic system exerts 78,000 lbs. of direct load compaction — No losses — parallel mount of telescopic cylinder insures this!

Container Wash-out System is brought into play quickly and simply through large side doors — Which can also be used for hand-loading operations when container system is not being used!

Here's a Container System that gives you the versatility you want — one that does the work you normally have to do — and gives you the added flexibility of being able to pick up regular stops not using containers — along with your regular container runs!

It's a Proven Cost Saver for Cities -- and a Money Maker for contractors!

With the trend to containerization spreading throughout the Country, you'll be as up to date as tomorrow and still be able to offer regular pick up service at the same time! Either way — you'll be dollars ahead with PAK-MOR'S Handi-Lift Container System!



Lo Boye

TRAILER WITH HANDI-LIFT

A Bonus Feature of the Handi-Lift Container System is the fact it can be mounted on large capacity Lo Boye Trailers. With capacities of 28 - 32 & 38 Cubic Yards, you have the largest capacity Container System available on Today's Market!

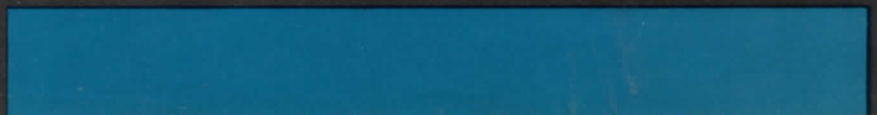
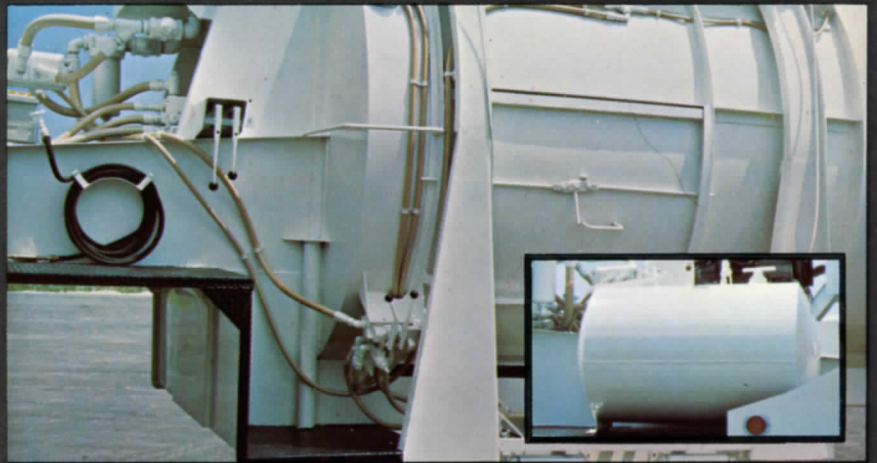
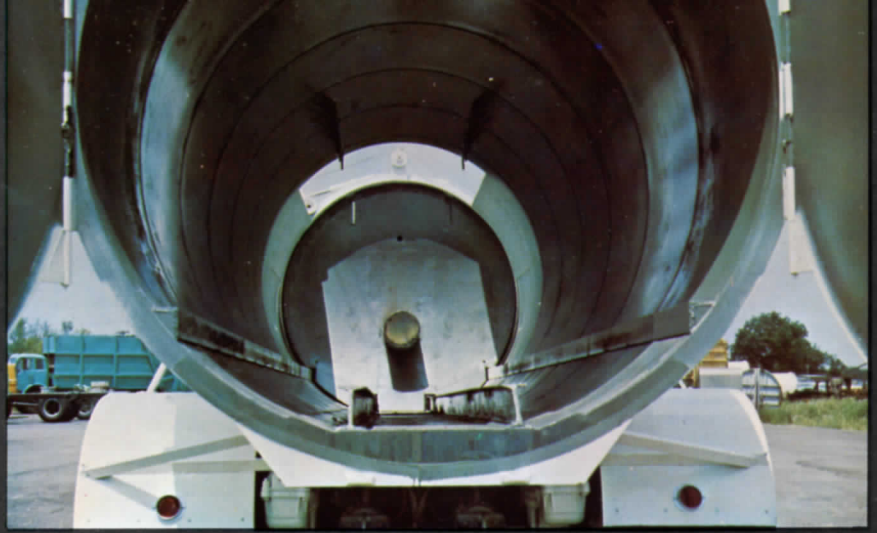
Lo Boye Trailers — completely hydraulic — have the same "Dynamic Sweep Action" as regular Hydraulic PAK-MORs. A fast, clearing action, operated by a separate control — propels the Packer Plate over 90" from loading position into barrel and return in a matter of seconds! Sweep Action moves the contents of each container out of the way giving you the fastest sequenced and loading capability ever to be offered in trailer operation.

As in all PAK-MORs, the multi-stage telescopic cylinder is mounted parallel to the floor and exerts the full compaction thrust of this hydraulic system directly against loaded refuse. A "built-in" long life feature of Lo Boye telescopic cylinders is the overlap between stages — average overlap is eighteen inches (18") and insures non-leak, long packing seal life and less possibility of cylinder malfunction. PAK-MOR telescopic cylinders have "long life" engineered right into them!

Containing its own power source, the Lo Boye Trailer operates completely independent of the tractor which pulls it — it can be detached at a high generation point and carry out the complete servicing function by itself.

Hopper Closure Door, Container Positioning Arm and Container Washout System are all available with the Handi-Lift Container System and Lo Boye Trailer combination.

When large container routes and long hauls make other types of equipment costly and impractical — this solid cost reducer backed by proven performance is the big dollar difference for you!



For Fast Residential Route Pickup Service Incorporating the Handi-Lift Container System.

Just as pack mules have always been used to haul material from difficult locations . . . Now PAK-MOR's Pack Mule Container Train System gives you the flexibility of making fast, continuous pickups through alleys or residential streets . . . without the necessity of driving heavy packer garbage trucks through these areas!

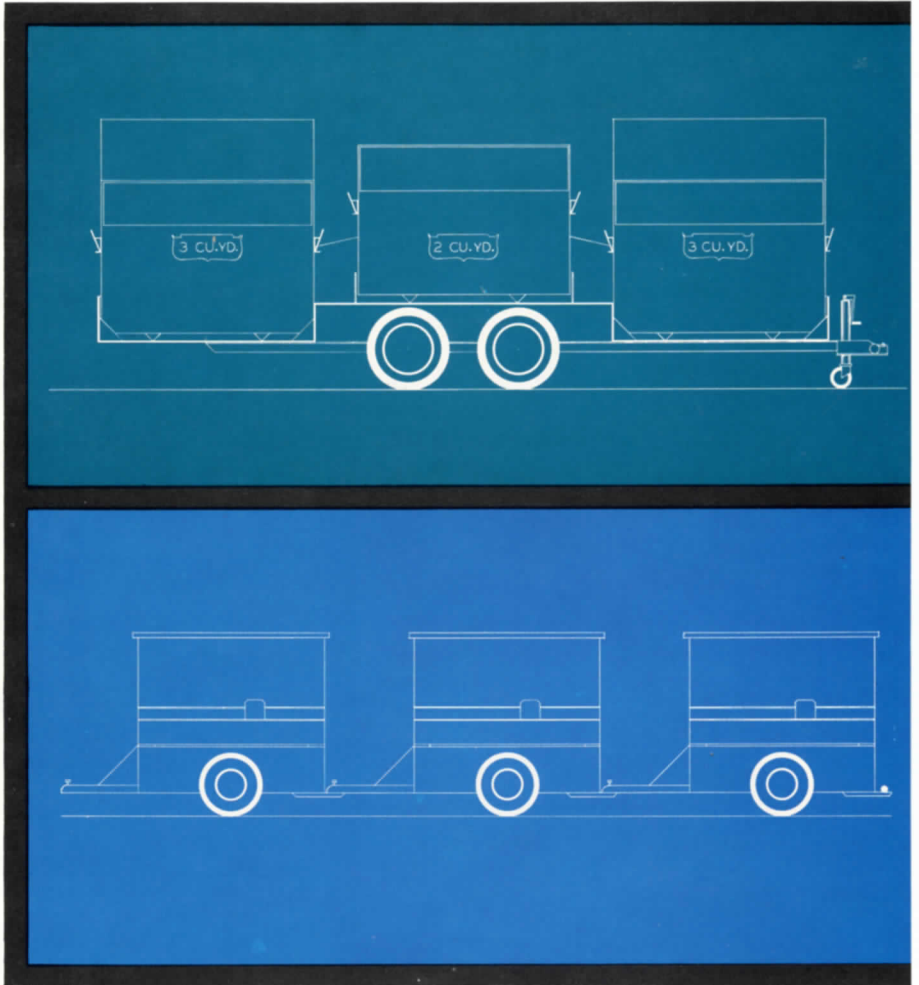
A natural for narrow, hard to maneuver parts of your routes. . . and a new low cost pick up program for progressive administrators and operators conscious of spiraling collection costs!

PAK-MOR's Pack Mule Container Train System offers you two unique and distinctive approaches to speedier and lower cost collection service. One approach — a series of four cubic yard containers mounted with wheels and connected in a series of three containers which are drawn by a lightweight, inexpensive prime mover. Containers form a train and will track enabling turning and maneuvering in close quarters. When all containers are full, train meets large capacity PAK-MOR Handi-Lift Packer at designated points and is unloaded right on the spot. This enables a number of Pack Mule Container Trains to work with each PAK-MOR Handi-Lift Packer.

A second practical approach to lower operating costs is by using a Pack Mule Trailer on which is mounted 2 two yard containers and 4 three yard containers — a total of 16 cubic yards! — skid mounted containers which travel your routes drawn by an inexpensive prime mover — quickly pick them clean and are unloaded by a PAK-MOR Handi-Lift Packer teamed to meet this trailer at designated locations.

Time required to unload either Pack Mule Container Train System is shaved to a minimum. Containers do not have to be jockeyed around in order to make hook up, nor do they have to be shuffled back and forth, which consumes time at the rendezvous point. Hook up is direct, servicing is fast and the fear of overhead clearance is removed because container does not have to travel in a high overhead arc to be emptied.

Using either method — you have a fast and complete operation designed to cut costs and give you the quickest and most inexpensive collection service available today! This is another ingenious PAK-MOR "Know How" Method to give you the finest equipment to cope with the ever-expanding problems of refuse collection!



D I M E N S I O N S

	LENGTH	WIDTH	LOADING HEIGHT
4 Cu. Yd. Containers with Axle	72" I.D. 75" O.D.	56" I.D. 59" O.D.	55"
TRAILER CONTAINERS			
2 Cu. Yd. Containers (Two on Trailer)	58" I.D. *63½" O.D.	39¾" I.D. 40" O.D.	54"
3 Cu. Yd. Containers (Four on Trailer)	58" I.D. *63½" O.D.	46¼" I.D. 46½" O.D.	45"

Containers are constructed of 12 gauge High Tensile Steel - Front, back and bottom broken from one continuous sheet and continuous welds at sides make container watertight. Sturdily reinforced by channels at each side to prevent deformation.

Covers — Heavy duck canvas lids provided to prevent scattering when containers are fully loaded.

*To outside of lift plates.

**PAK-MOR's
HANDI-LIFT
CONTAINER
SYSTEM
PRODUCES
PROFITABLE
RESULTS**

When located at...

- Office Buildings
- Industrial Plants
- Hotels
- Restaurants
- Hospitals
- Shopping Centers
- Trailer Parks
- Motels
- Apartment Houses
- Housing Projects
- Airports
- Bus Stations
- Railroad Stations

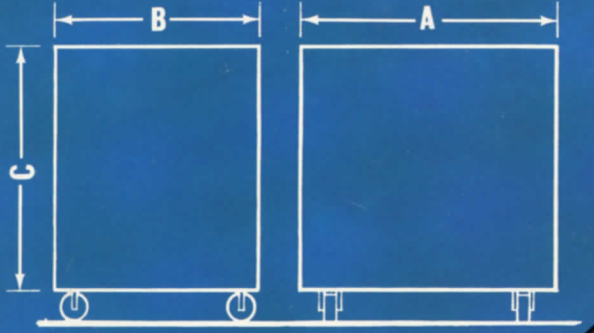
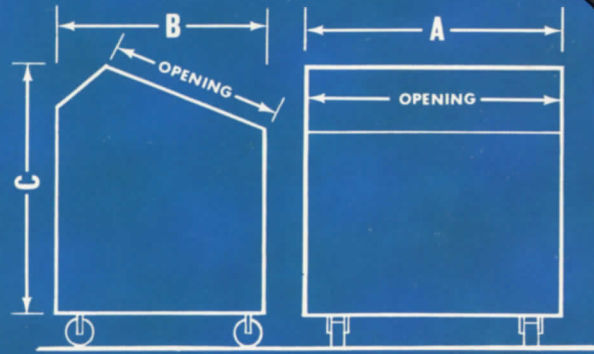


**AS
WELL
AS**

When placed at...

- School Grounds
 - Ball Parks & Stadiums
 - Picnic & Recreational Areas
 - Large Roadside Parks
 - Drive In —
 - Groceries
 - Movies
 - Eating Places
 - Church Grounds
 - Amusement Parks
- Premises Are
Maintained Clean
and Tidy
Service Is Fast . . .
And Cost of
Operation Is
AMAZINGLY Low!

PEAK DOME



FLAT TOP

PEAK DOME

SIZE	LENGTH "A"	WIDTH "B"	HEIGHT "C"	OPENING	WEIGHT
2 Cu. Yds.	58"	40"	50 $\frac{5}{8}$ "	39 $\frac{3}{4}$ "x57 $\frac{3}{4}$ "	390 lbs.
3 Cu. Yds.	58"	46 $\frac{1}{2}$ "	58 $\frac{1}{4}$ "	39 $\frac{3}{4}$ "x57 $\frac{3}{4}$ "	520 lbs.
4 Cu. Yds.	58"	46 $\frac{1}{2}$ "	71 $\frac{1}{4}$ "	39 $\frac{3}{4}$ "x57 $\frac{3}{4}$ "	600 lbs.

FLAT TOP

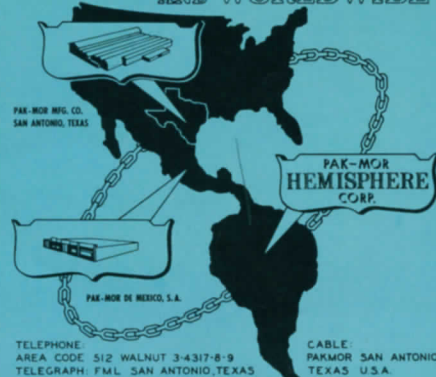
SIZE	LENGTH "A"	WIDTH "B"	HEIGHT "C"	OPENING	WEIGHT
1 $\frac{1}{2}$ Cu. Yds.	58"	30 $\frac{1}{8}$ "	40 $\frac{1}{2}$ "	29 $\frac{7}{8}$ "x57 $\frac{3}{4}$ "	321 lbs.
2 Cu. Yds.	58"	40"	40 $\frac{1}{2}$ "	39 $\frac{3}{4}$ "x57 $\frac{3}{4}$ "	357 lbs.

Lid #36 furnished with flat-top containers



Under the company's product development program, the right is reserved to change design or construction details and to furnish equipment when thus altered without reference to illustrations or specifications presented herein and supercedes all previously published information.

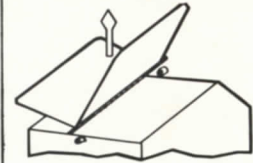
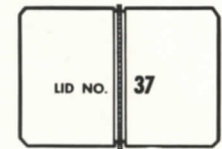
LINKED IN SERVICE... TO THE AMERICAS AND WORLDWIDE



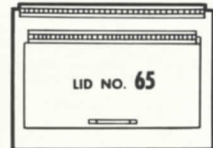
1123 S.E. Military Drive - P.O. Box 14147
San Antonio, Texas 78214
In Co-operation with:
PAK-MOR de Mexico, S.A.



SPLIT TYPE LIDS
(Permanent)



TAKE-OFF LIDS



LID WITHIN-A-LID
(Permanent)



FOLD BACK LIDS
(Permanent)

Budget Down In Midland, Taxes Same

Standard-Times News Service
MIDLAND — City Council Tuesday adopted a 1962-63 city budget calling for expenditures of \$6,216,007 and revenue of \$6,273,700. Expenditures are \$76,193 less than the budget for 1961-62. Income for the year is expected to be \$103,325 less than last year's budgeted revenues.

Midland's \$1.50 per \$100 tax rate will remain the same for the fiscal year which begins Oct. 1.

The budget includes a \$1,000 salary boost for City Manager Alex Bul from \$35,000 to \$36,000 and a pay hike for City Atty. Joe Nuesle of \$600 to \$11,600.

Twenty-seven positions were deleted from accounts in the general fund. Largest decrease was in the budget of the sanitation department, from \$428,803 to \$375,776. Fourteen permanent positions were eliminated in the department.

Mayor H. C. Avery Jr. said garbage service will be increased even though the budget will be decreased. Avery said a new container system makes garbage pick-up more efficient and more economical.

Personnel of the engineering and design division was reduced by seven positions. Fourteen accounts in the general fund will have reductions in expenditures while only 12 accounts have increases.

The budget included a \$10 per month pay increase for patrolmen in the police department. Supervisors' salaries were raised last year.

*Sanitation
Budget
Cut
\$53,027.00
with
14 less men
in
Sanitation
Dept.*

DISTRIBUTED BY