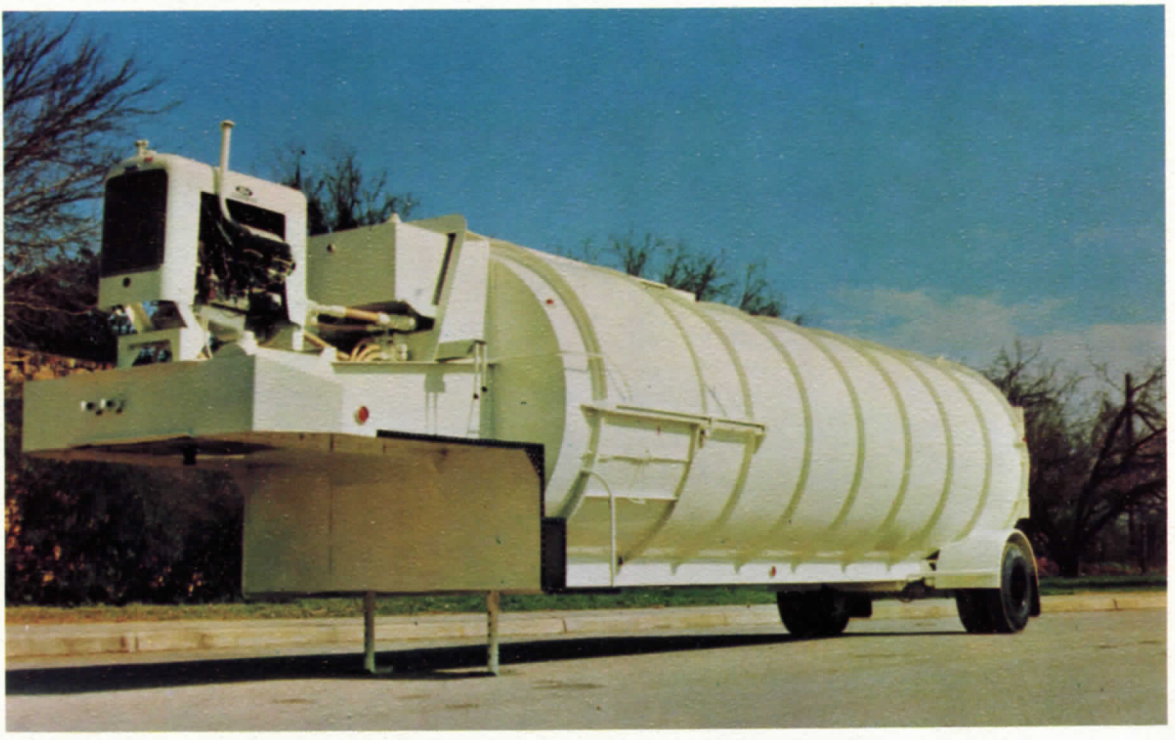


6-2-67



Lo Boye





# PAK-MOR LO BOYE DELIVERS Biggest Pay Loads / Lowest Operating Costs

1

**RUGGED CONSTRUCTION** — PAK-MOR Lo Boyes are built to deliver trouble-free service day after day, year after year. The round body, which provides maximum stress distribution, withstands the tremendous pressures necessary to produce heavy, densely compacted loads. The absence of corners allows for complete compaction across the entire diameter of the cylinder with no wasted space.

2

**DYNAMIC SWEEP ACTION WITH INDEPENDENT POWER** — The Pak-Mor Lo Boye combines both the efficiency of the dynamic sweep action which sweeps the loading area clear at a rate of 10 ft. per sec., with a self-contained power plant totally independent of the tractor. This permits the trailer to be packed while underway, clutching and declutching chassis transmission, eliminating delays usually encountered during loading operations. The trailer can also be detached at high generation points to carry out the complete compaction function independent of any other source.

3

**TELESCOPIC HYDRAULIC CYLINDER** — Mounted parallel to the packer floor, the telescopic, multi-stage hydraulic cylinder delivers a direct force of 78,000 pounds on the packer plate — the greatest packing force, without loss of efficiency from angular displacement, available in any full-length packer body on the market today. The hard chrome-surfaced (.003"-.005") cylinders, overlapping an average of 18-22 inches per sleeve for maximum rigidity, insure non-leaking, longer packing-seal life, and virtually eliminate the possibility of cylinder malfunctions. Trunnion Slides and Vanadium 50 I Beams in the bed of the trailer guide both cylinder and packer plate in perfect alignment, parallel to the body.

4

**DOZER PACKER PLATE** — The "dozer" packer plate is deliberately designed to thrust refuse upward as it plows forward, attaining uniform compaction throughout the entire load.

5

**SIMPLIFIED LOADING AND UNLOADING** — The extremely large (44" x 60"), conveniently low loading openings offer fast route service on both residential and commercial runs. Loading from either side keeps men away from street traffic; and anything can be loaded — no boxes or crates to be broken down. The packer plate, moving beyond the end of the body, discharges the entire load fast and clean. Non-tilting, the packer body need not be spotted at land fills to prevent capsizing, and presents no problems with incinerator overhangs.

6

**ROUTE SHRINKING CAPACITIES** — Pak-Mor Lo Boyes are available in 28, 32, 36 and 38 cubic yard capacities — the largest on the market today. Consolidating several routes into one in a single day-long operation, Lo Boye trailers eliminate costly, time-consuming round trips to disposal areas. The average daily gasoline consumption is a modest five gallons. The more remote the dump locations, the greater the savings in operation costs.

7

**CUSTOM DESIGNED HYDRAULIC SYSTEM** — All hydraulic lines and fittings are readily accessible at the front of the packer body, completely shielded from foreign matter. The 70 gal. reservoir, double the capacity required, dissipates heat quickly and provides cooler operation. Foaming is prevented; and efficiency and longer life are added to the entire hydraulic system. In addition, the reservoir is equipped with an effective filter strainer, magnetic trap extending 16" into the reservoir and with a 50 c.f.m. in. line filter, and is fully baffled for proper fluid flow. The complete hydraulic system is designed and manufactured to exceed the highest industry standards.

8

**SAFETY PLUS** — Full width, sur-grip running boards and convenient, sturdy handholds provide safe, out-of-traffic riding areas on Lo Boye trailers. The round body permits the driver to keep loaders in sight at all times, while positive, dead-man controls safeguard the entire loading, packing, and unloading operations.

9

**GENEROUS LIQUID CAPACITY** — The entire lower portion of the Lo Boye body is constructed in one complete section, and is watertight to the height of the loading doors. Seals on the sturdy, tight-fitting rear doors prevent leakage until opened at disposal points.

10

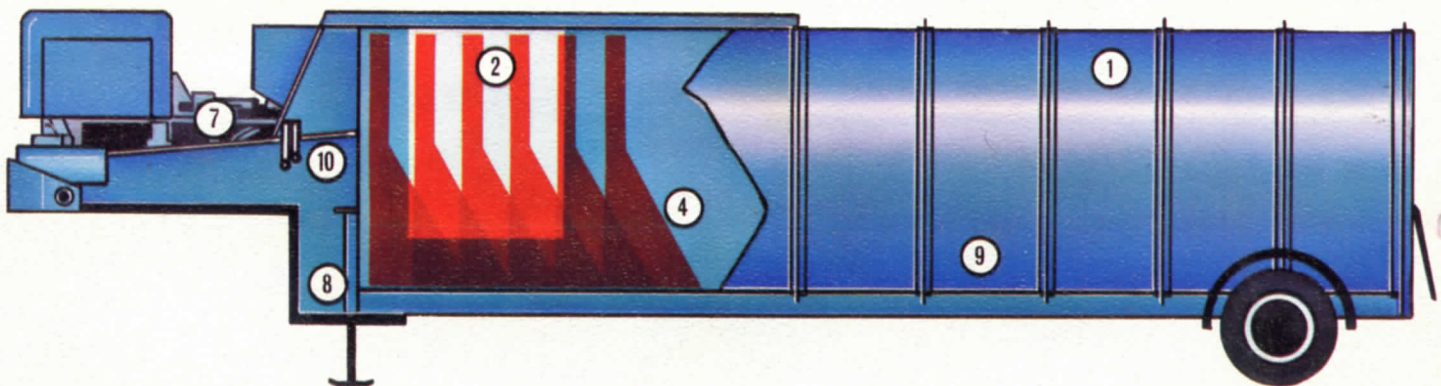
**DUAL OUTSIDE CONTROLS** — Controls on both sides of the Lo Boye trailer save steps and speed up collection and ejection. Clearly marked, they give immediate and positive command over each function, and automatically center as pressure on valve handle is relieved for maximum operating safety.

11

**MAXIMUM DESIGN FLEXIBILITY** is obtained by custom design of charging hopper. The hand-lift container system is available allowing high volume and maximum maneuverability. For commercial operations the Lo Boye is equipped with electric motor, automatic cycling and remote push-button controls produce an effective industrial tool and actually becomes a mobile stationary packer. Also available are hydraulically actuated top and rear doors.

12

**PROVEN PERFORMANCE** — The effectiveness of Lo Boye trailers in cutting time and operational costs has been proven time and again in municipalities independent contractors and industrial users. Their unsolicited, factual testimonials are a matter of record, and available on request from the plant or your Pak-Mor distributor.



For rem ten, look abil offer pack bod bigg ope



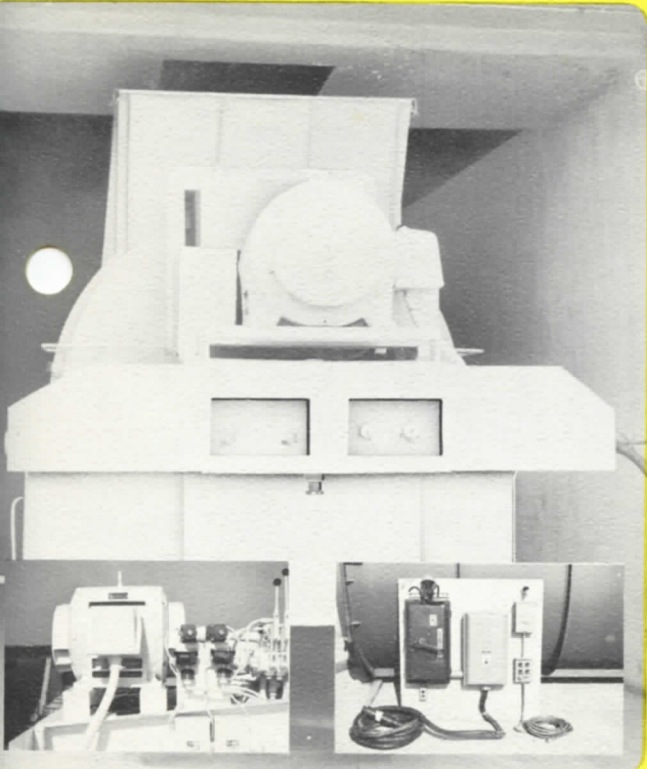
# Pak-Mor Lo Boye IS YOUR BIGGEST BUY!



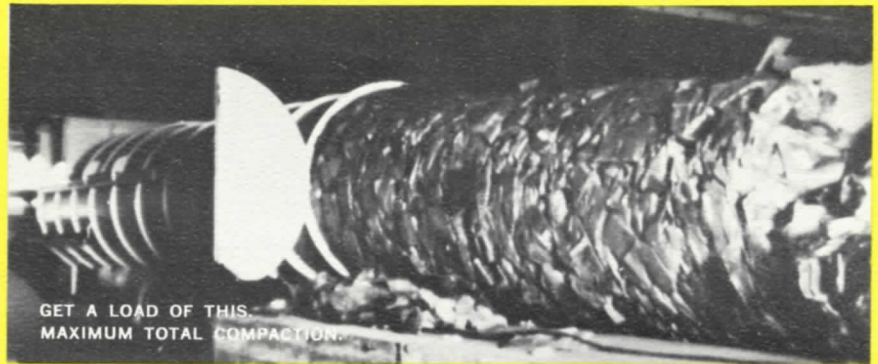
Standard side loading capability with low loading and deep hopper area — maximum flexibility.



11 Large custom designed hopper to accommodate bottom discharge containers and for transfer facility operation — maximum flexibility.



Designed for industrial applications with electric motor power source, automatic cycling and remote push-button controls. In effect a highly mobile stationary packer.



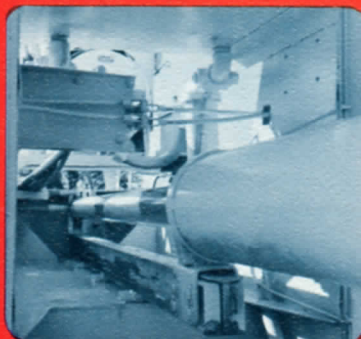
GET A LOAD OF THIS  
MAXIMUM TOTAL COMPACTION.



11 Engineered to handle detachable containers without losing hand loading capability — maximum flexibility.

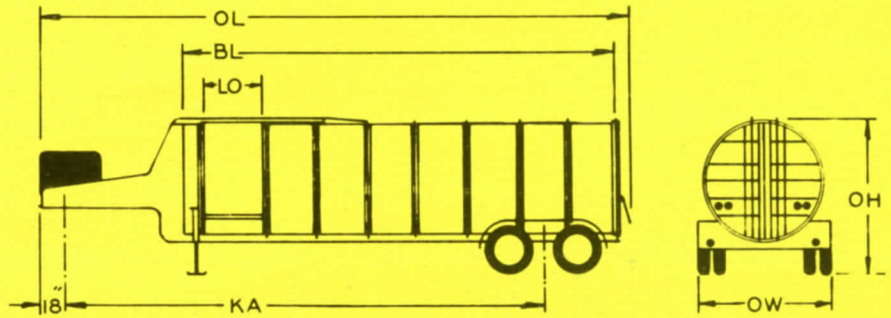
quality and workmanship to be remembered long after price is forgotten. Municipalities and contractors alike are turning to the traditional Pak-Mor dependability in Lo Boye units. Balanced design offers the most efficient power usage in the most ruggedly designed unit for long term reliability and the lowest pay loads at the lowest possible operating costs.

3





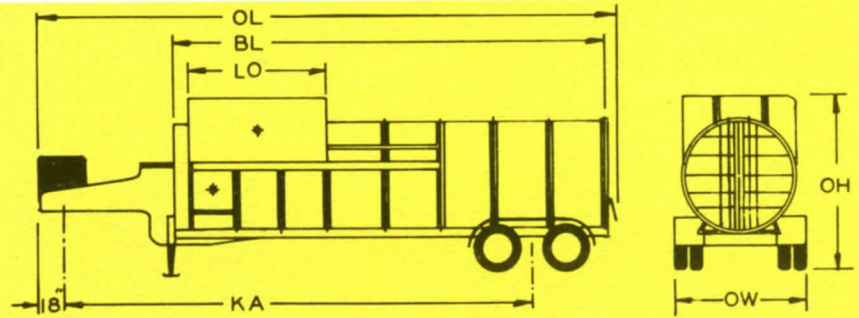
*Lo Boye*  
**TRAILERS**



RATED CAPACITY	28 CU.YD.	32 CU.YD.	38 CU.YD.	TAN 32YD.	TAN 38YD.	TRACTOR
OVERALL LENGTH - OL	32'-0"	35'-0"	40'-0"	35'-0"	40'-0"	CA : 72"
OVERALL HEIGHT - OH	9'-0"	9'-0"	9'-0"	9'-8"	9'-8"	FIFTH WHEEL HEIGHT - 48"
OVERALL WIDTH - OW	8'-0"	8'-0"	8'-0"	8'-0"	8'-0"	
BODY LENGTH - BL	23'-0"	26'-0"	31'-0"	26'-0"	31'-0"	TWO TON RA- TING OR GREA- TER
LOADING OPENING-LO	3'-8"	3'-8"	3'-8"	3'-8"	3'-8"	
KINGPIN TO AXLE - KA	27'-4"	30'-4"	33'-4"	26'-2"	31'-2"	
INSIDE DIAMETER	6'-9"	6'-9"	6'-9"	6'-9"	6'-9"	
TRAILER WT. EMPTY	14,800 LBS.	15,300 LBS.	16,200 LBS.	17,025 LBS.	17,935 LBS.	

● SINGLE AXLE CAPACITY-19,000 LBS. ● CONTROLS ON BOTH SIDES ● SINGLE OR  
 ● TANDEM AXLE CAPACITY-36,000 LBS. ● PACKING PRESSURE-75,000 LBS. TANDEM AXLE  
 ● POWER UNIT-100 H.P. ENGINE ● TIRE SIZE-8:25x15-14 PLY AVAILABLE  
 ● PUMP-35 GAL. PER MINUTE ● STANDARD OPENING SHOWN WITH ALL  
 ● SWEEP ACTION ON CYLINDER CAN BE MODIFIED AS REQUIRED TRAILERS

*Handy Dump*  
**TRAILERS**



RATED CAPACITY	28 CU.YD.	32 CU.YD.	38 CU.YD.	TAN 32YD.	TAN 38YD.	TRACTOR
OVERALL LENGTH - OL	32'-0"	35'-0"	40'-0"	35'-0"	40'-0"	CA = 72
OVERALL HEIGHT - OH	11'-0"	11'-0"	11'-0"	11'-8"	11'-8"	FIFTH WHEEL HEIGHT - 48"
OVERALL WIDTH - OD	8'-0"	8'-0"	8'-0"	8'-0"	8'-0"	
BODY LENGTH - BL	23'-0"	26'-0"	31'-0"	26'-0"	31'-0"	TWO TON RA- TING OR GREA- TER
LOADING OPENING-LO	8'-4"	8'-4"	8'-4"	8'-4"	8'-4"	
KINGPIN TO AXLE-KA	27'-4"	30'-4"	33'-4"	26'-2"	31'-2"	
INSIDE DIAMETER	6'-9"	6'-9"	6'-9"	6'-9"	6'-9"	
TRAILER WT. EMPTY	15,300 LBS.	15,800 LBS.	16,700 LBS.	17,575 LBS.	18,500 LBS.	

● SINGLE AXLE CAPACITY-19,000 LBS. ● CONTROLS ON BOTH SIDES ● SINGLE OR  
 ● TANDEM AXLE CAPACITY-36,000 LBS. ● PACKING PRESSURE-75,000 LBS. TANDEM AXLE  
 ● POWER UNIT-100 H.P. ENGINE ● TIRE SIZE-8:25x15-14 PLY AVAILABLE  
 ● PUMP - 35 GAL. PER MINUTE ● STANDARD OPENING SHOWN WITH ALL  
 ● SWEEP ACTION ON CYLINDER CAN BE MODIFIED AS REQUIRED TRAILERS

Under the company's product development program, the right is reserved to change design or construction details and to furnish equipment when thus altered without reference to illustrations or specifications presented herein and supercedes all previously published information.

**LINKED IN SERVICE...**  
 TO THE AMERICAS  
 AND WORLDWIDE

PAK-MOR HEMISPHERE CO. INC.  
 SAN ANTONIO, TEXAS, U.S.A.

TELEPHONE: AREA CODE 512 WALNUT 3-4317-8-9  
 TELEGRAPH: PML SAN ANTONIO TEXAS

**DISTRIBUTED BY:**