

TRANSFER STATIONS



1123 S.E. MILITARY DRIVE
P.O. BOX 14147
SAN ANTONIO, TEXAS 78214



DESIGNED FOR HIGH VOLUME, HIGH SPEED, REFUSE TRANSFER

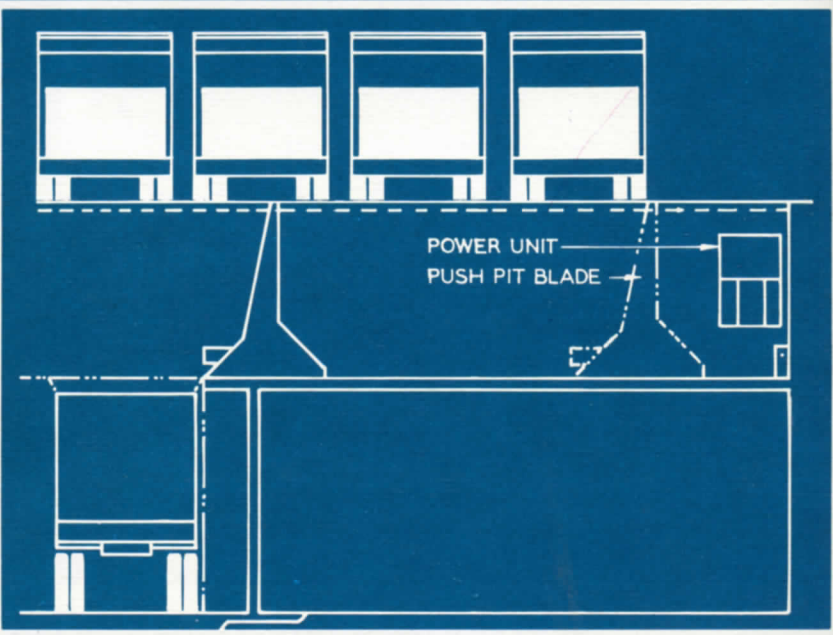
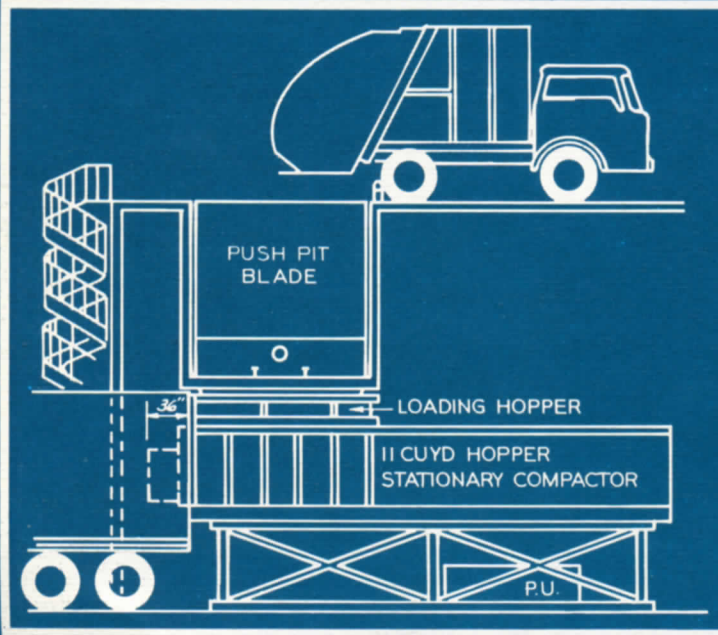
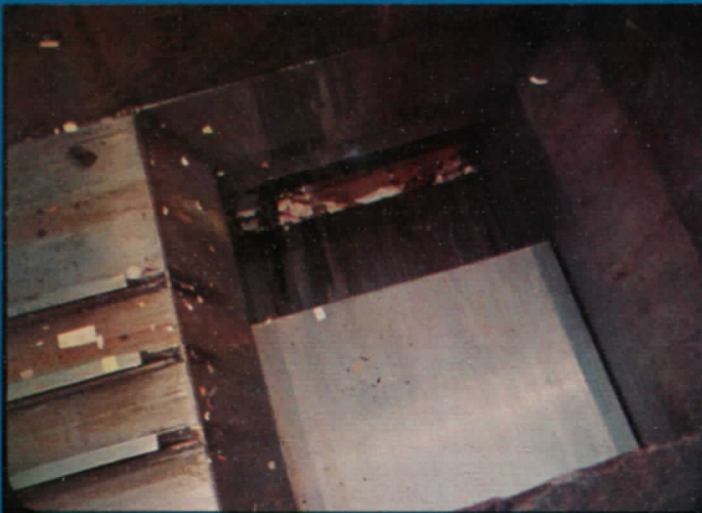
Push Pit Systems

- PUSH PIT WITH STATIONARY COMPACTOR
- 720/960 TONS TRANSFERRED PER 8 HOURS*
- CONCRETE CONSTRUCTED PUSH PIT

Accommodates four collection trucks simultaneously, thus eliminating costly time spent waiting • Multi-stage hydraulic cylinder powers blade moving refuse directly into hopper feeding the stationary packer which in turn packs the transfer trailer quickly while assuring even compacted weight distribution.

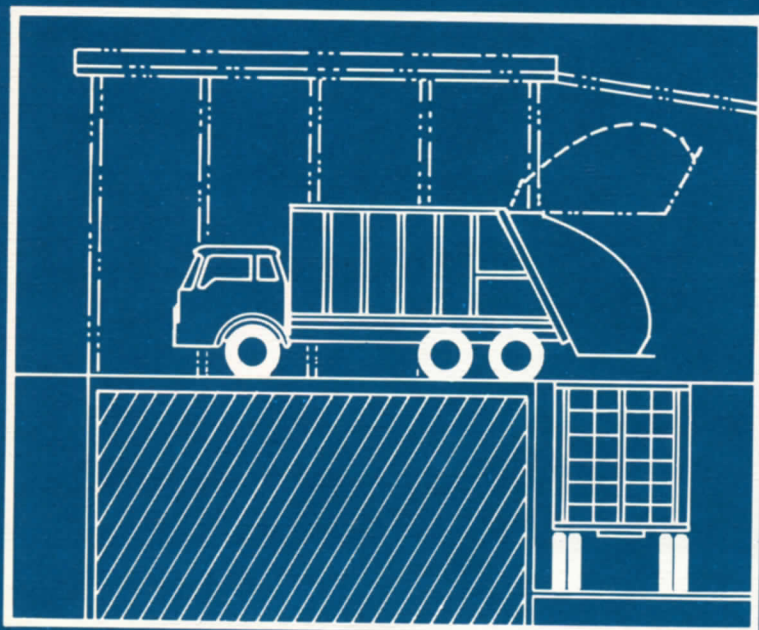
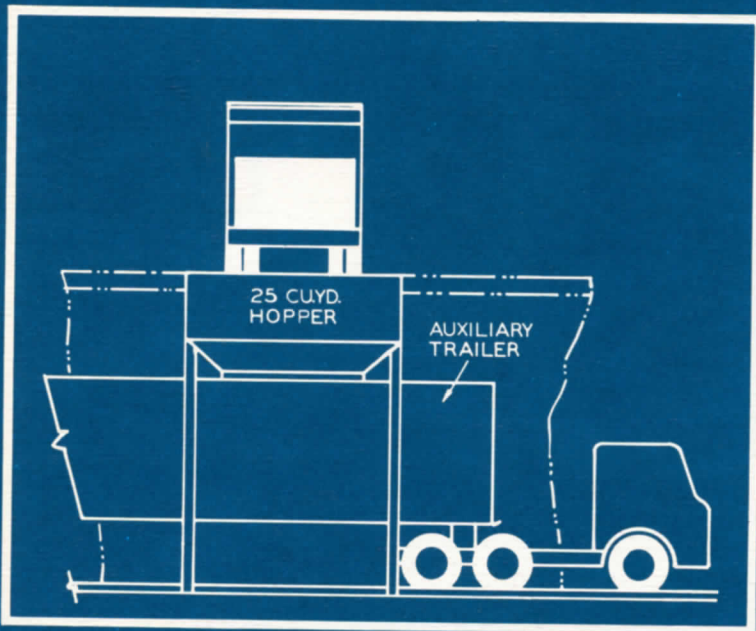
- PUSH PIT WITHOUT STATIONARY COMPACTOR
- 360/480 TONS TRANSFERRED PER 8 HOURS*

Identical push pit design is utilized thereby eliminating costly collection vehicle bottlenecks. Without stationary compactor refuse must be metered into trailer by operator plus must pause while transfer trailer executes own compaction cycles independently.



Direct Hopper/Direct Dump Systems.

Up to 100/133 tons per 8 hour shift.* A common method where smaller volumes are generated utilizing top loading transfer trailers or top loading handi-dump LoBoyes. Advantage of using Hopper with bottom sliding door allows standing Hopper storage while Trailer makes landfill trip reducing number of Trailers required.



LoBoye Transfer Trailer System

For heavy refuse in International Applications or shredded/denser refuse domestically, the LoBoye accommodating cylindrical stationary packer is your solution. Low profile 28, 32, 38 or 45 cubic yard capacity LoBoyes allow the greatest payload possible relative to their weight because of their strong cylindrical design and lighter body weight. Low bridges, low legal payloads, poor roads or dense refuse can rule out the square Transfer Trailer system.



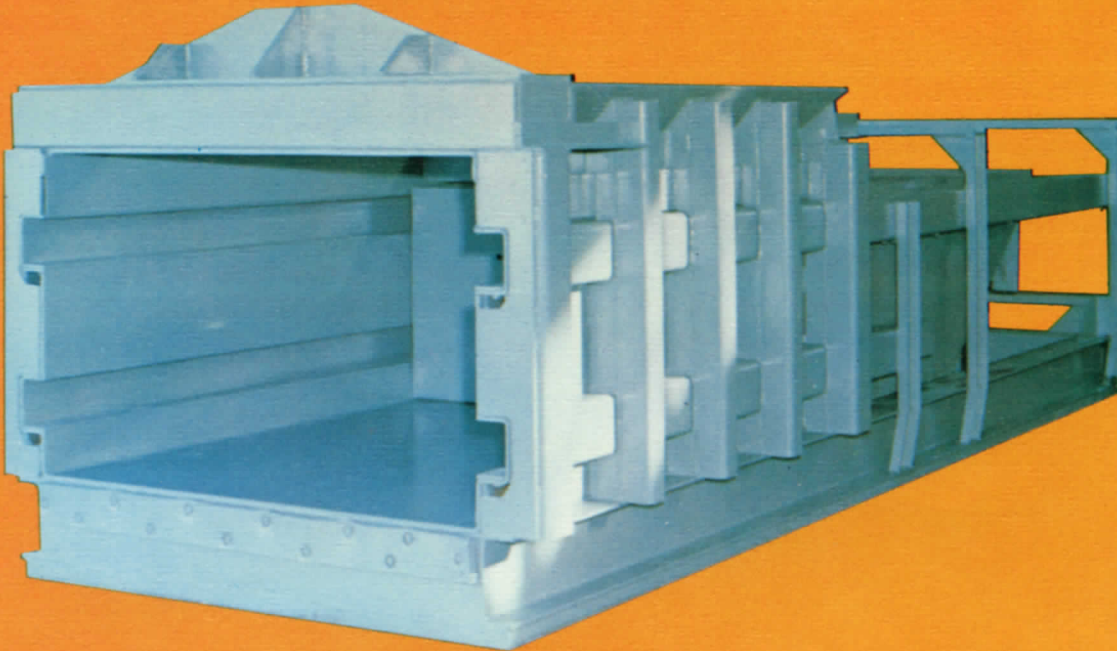
*Tonnage based on 600/800 LBS./Cu. Yd.



STATIONARY PACKERS SPECIFICATIONS

HIGH VOLUME REQUIREMENTS DEMAND:

- Rugged and durable construction
- High speed ram cycling
- High ram thrust capability
- Remote push-bottom controls
- Replaceable ductile iron slides and steel ways
- More favorable axle load distribution allowing substantially higher net pay loads.



The products illustrated in this catalog are protected by United States and Foreign patents, patents pending and applied for. Illustrations and specifications are not binding as detailed as PAK-MOR reserves the right under the company's product development program to change design or construction details and to furnish equipment when thus altered without reference to illustrations or specifications presented herein, and supersedes all previously published information.



LINKED IN SERVICE...
TO THE AMERICAS
AND WORLDWIDE

PAK-MOR MFG. CO.
SAN ANTONIO, TEXAS



TELEPHONE: A/C 512-923-4317
TELEX NO. 76-7429
TELEGRAPH: FML SAN ANTONIO, TEXAS

CABLE:
PAK-MOR SAN ANTONIO
TEXAS USA



A COMPLETE LINE OF
REFUSE COLLECTION EQUIPMENT



REAR LOADER



TRANSFER TRAILER



SIDE LOADER



FRONT LOADER

	MODEL 60	MODEL 110	MODEL 110 R
Hopper Opening	72"L x 66"W x 75"H	114"L x 83"W x 65"H	110"LG x 72"W
Hopper Displacement	6 cu. yds.	11 cu. yds.	11 cu. yds.
Ram Face Area	3199.6 sq. in.	3423 sq. in.	3605.1 SQ. IN.
Ram Face Pressure	22 PSI	23 PSI	31.5 PSI
Total Ram Pressure	103,000 Lbs.	114,000 Lbs.	114,000 Lbs.
Cycle Time	50 Sec.s	45 Sec.s	45 secs.
Cylinder Stroke	100"	153"	153"
Motor	60 HP	60 HP	60 H.P.
Pump 1500 PSI	98 GPM, 1750 RPM	98 GPM, 1750 RPM	98 GPM, 1750 RPM
Packer Size	19'4"L x 89"W x 84"H	28'1"L x 8'W x 6'4"H	28'-1"L, 7'-3/4"W, 10'-2 1/4"H
Power Unit Size	10'L x 4'W x 5'H	10'L x 4'W x 5'H	10'L, 4'W, 5'H
Weight	15,000 Lbs.	33,000 Lbs.	30,000 Lbs.

DISTRIBUTED BY

PMSF780815