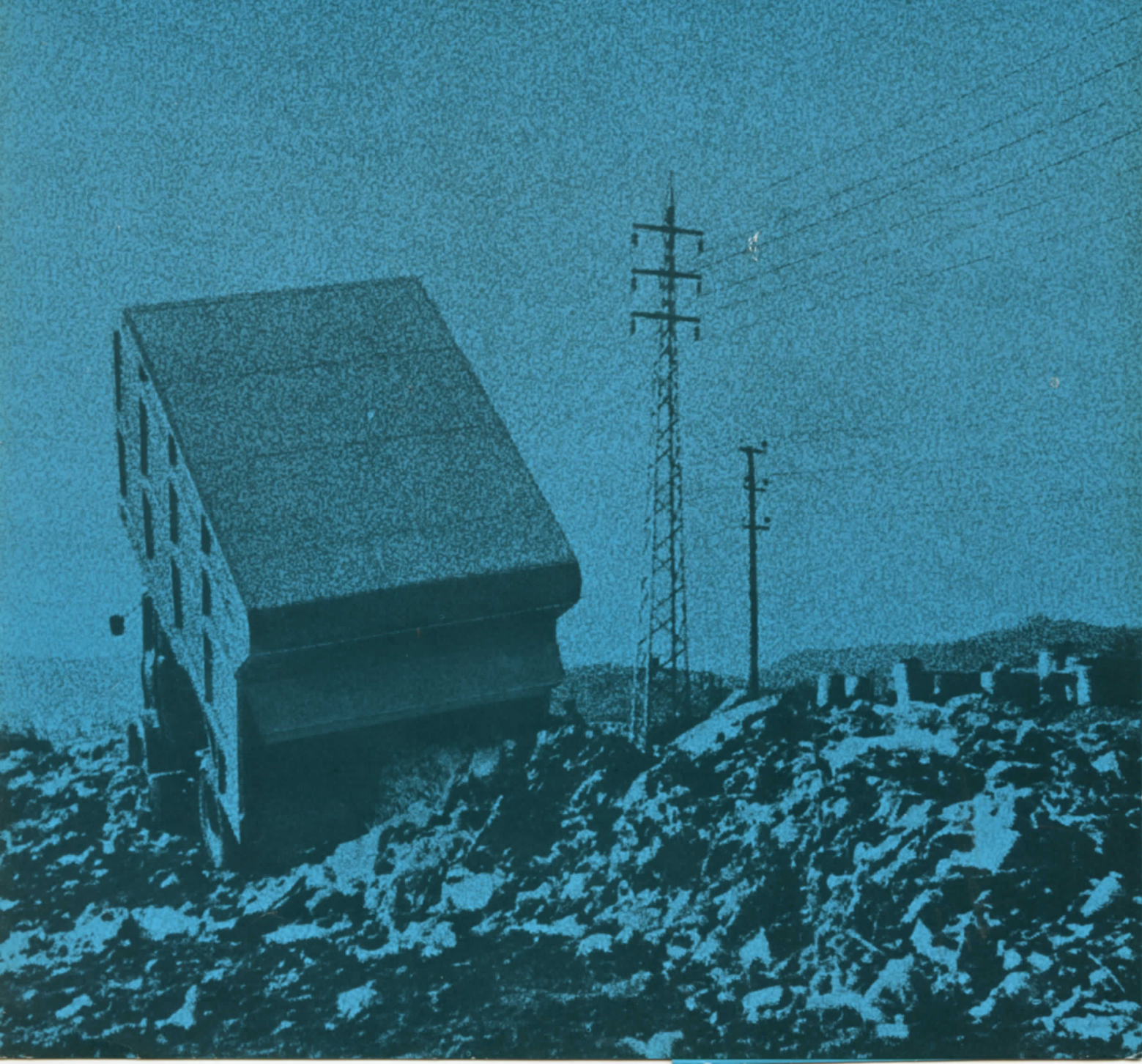


REFUSE COLLECTOR AND COMPACTOR UNITS

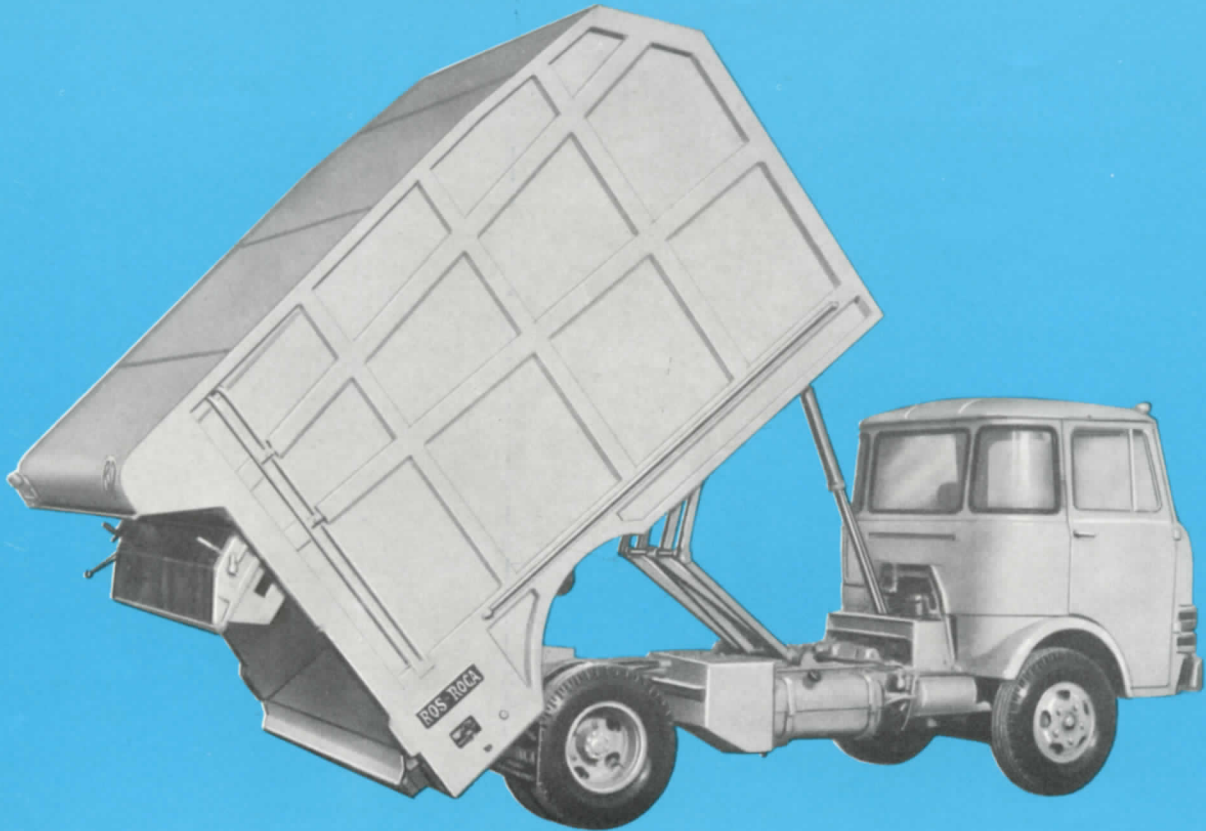
ROS ROCA

PATENTED MODELS

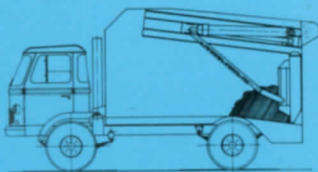


COMPRESSMORE

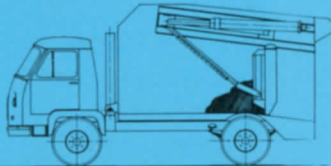
REAR LOADLINE COLLECTOR-COMPACTOR



- Large loading intake at the rear of vehicle, which allows four operators to work simultaneously.
- Construction is both solid and simple. Guaranteed hydraulic mechanisms.
- Controls located in driver's cabin and at rear of vehicle.
- Models with capacities of 7, 9, 12 and 14 cubic meters (9, 12, 15, 18 cubic yards).
- Compacting ratio of 3:1.



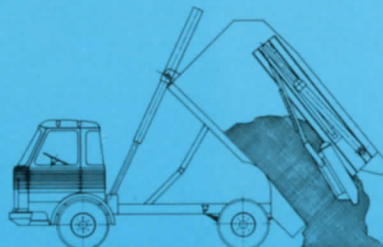
1 First loading operation.



2 First compacting cycle.



3 End of loading operation.



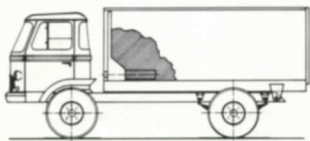
4 The Compressmore unit in position to dump.

ATLÁNTICO

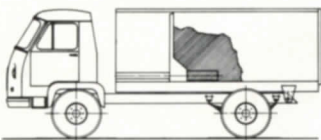
SIDE LOADING COLLECTOR-COMPACTOR



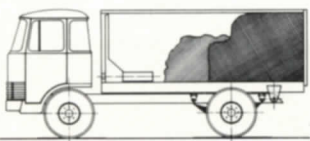
- The best selling refuse collector-compactor in Spain. Its low price places it within the economic means of every municipality.
- Very useful in small narrow streets and ancient historic areas.
- It can be loaded on both sides at a very low height. Large loading intakes.
- Controls for the hydraulic circuit are operated from the driver's cabin.
- Quick compacting cycle.
- Collapsible foot rests on both sides of the body.
- Solid construction.
- Models with capacity of 9, 11, 13 and 15 cubic meter (12, 14, 17, 19 cubic yardas).
- Compacting ratio of 2.5:1.



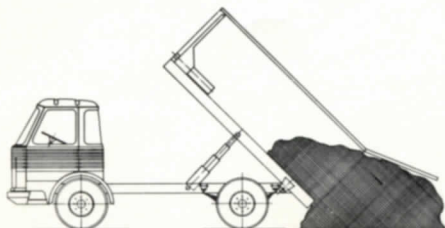
1 First loading operation.



2 First compacting cycle.



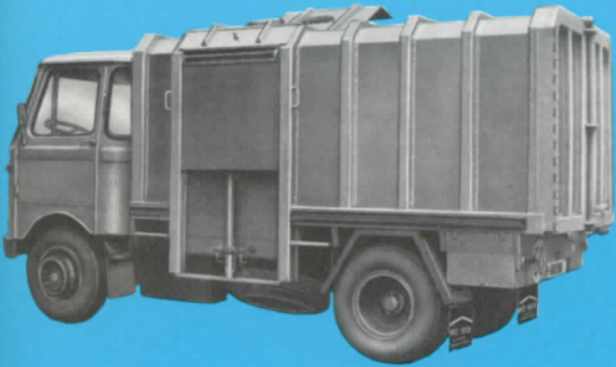
3 Last compacting cycle.



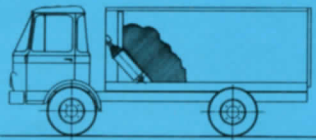
4 The «Atlantico» unit in a dumping position.

MEDITERRÁNEO

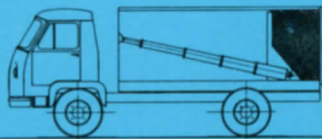
SIDE LOADING COLLECTOR COMPACTOR



- The same compressing shield dumps the garbage out, without having to use a tilting car.
- Side loading intakes are hydraulically adjusted. Automatic opening filling lids.
- Slam-type double winched rear door with safety locks.
- Models with capacity of 7, 9, 10 and 11 cubic meters (9, 12, 13, 14 cubic yardas).
- High-compacting ratio, 3:1.
- Great versatility. It may be used as an all-purpose transport unit.



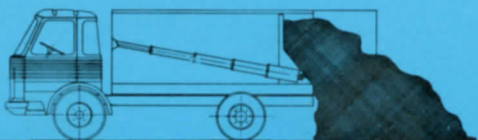
1 First loading operation.



2 First compacting cycle.



3 Successive loading operations.



4 The compressing shield also dumps the garbage out.

NON - COMPACTING

SIDE LOADING COLLECTOR



- The tipping body has been carefully dimensioned in order to attain a maximum capacity.
- Automatic opening ceiling lids.
- Made of steel or long-lasting non-rusting aluminium plate.
- The unit may be built with the upper ceiling lids set up on a desmountable top which allows the vehicle to serve as a multipurpose unit.

MANUFACTURED BY:

ROS ROCA

TÁRREGA

(SPAIN)



ROS ROCA, S. A.

Carretera Madrid-Barcelona Km. 511 ☎ 3109 65 and 3104 52
TÁRREGA (Lérida) SPAIN

Representatives:

Marqués de Urquijo, 10, 8.º ☎ 24180 80 - MADRID-8
Arzobispo Mayoral, 18, 3.º ☎ 22 73 78 - VALENCIA
Marqués de Pickman, 9, 2.º izquierda ☎ 25 20 83 - SEVILLA
Avd. Generalísimo Franco, 34, 6.º ☎ - PAMPLONA

Distributor: