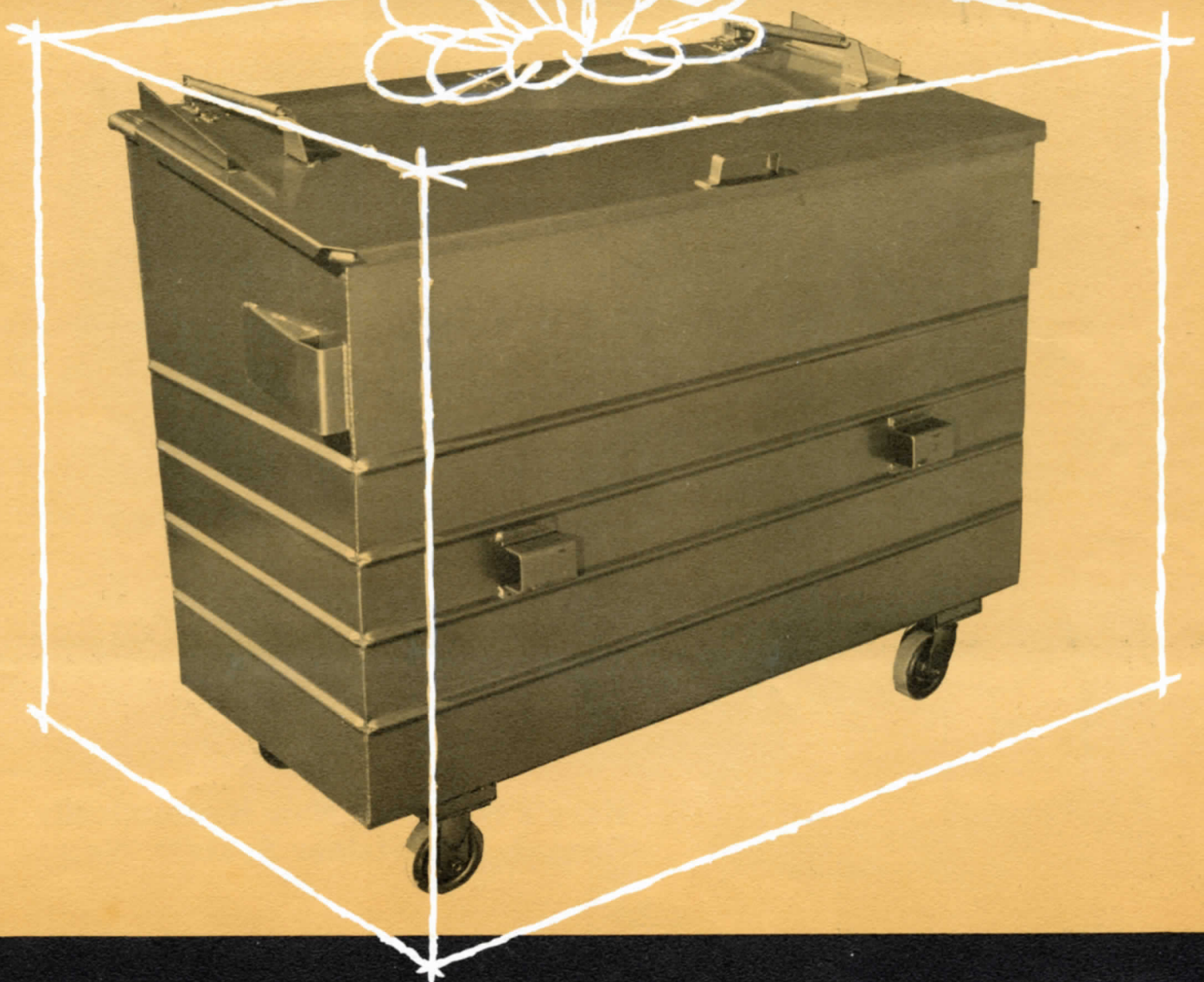


A neat package
for refuse collection

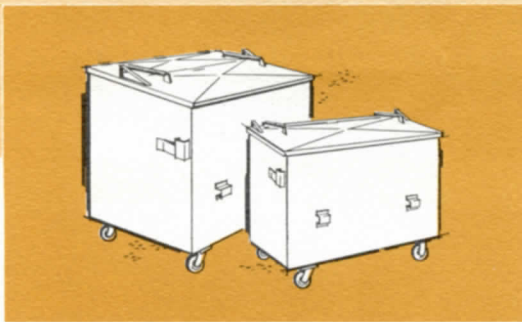


THE **SEAL-PRESS**
CONTAINER SYSTEM

**Seal-Press, high compression, all hydraulic
refuse body, and the container system
cut costs, man hours, and health hazards.**



Photo shows 20
cu. yard SEAL-PRESS
Refuse Unit mounted on a
compact White chassis with a side
loader dumping a 2 cu. yard container.



SEAL-PRESS Container System Offers:

- All refuse is stored in enclosed steel container
- Refuse is sealed away from rodents and flies
- Refuse is contained in a fireproof container
- A mobile container is placed where the refuse is accumulated; when filled it is rolled to a loading site ready for truck pick-up.

Here's How This New Hydraulically Operated Container System Works:

The Seal-Press unit is driven to the container area. The easy rolling Seal-Press containers are positioned along the side of the truck body. The container is latched, securely locked, safely hoisted and emptied by simple hydraulic method into the Seal-Press body and returned to pick-up level. The whole operation takes only seconds.

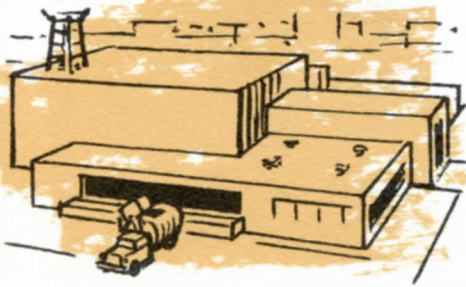


For use by

CONTRACT OPERATORS

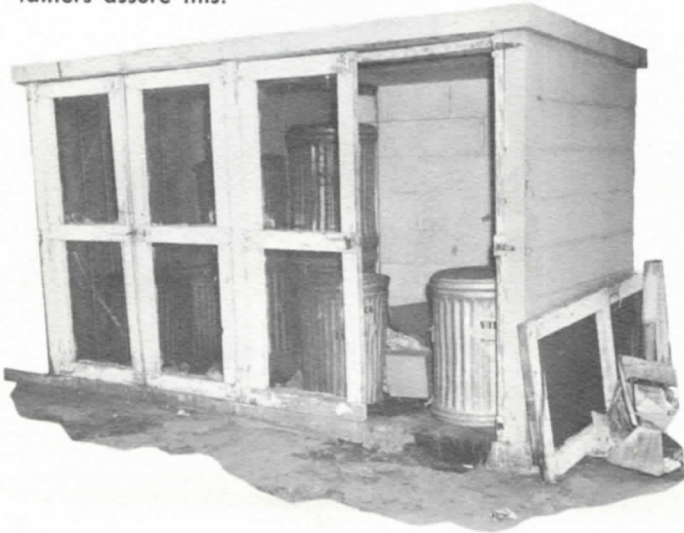
MUNICIPALITIES

GOVERNMENTAL AGENCIES



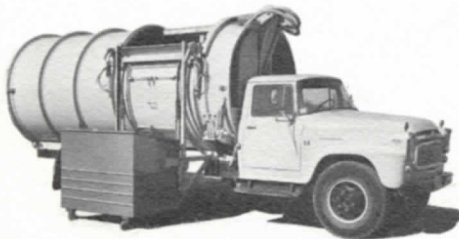
NOT THIS

Unightly and unsanitary garbage areas are eliminated when SEAL-PRESS containers are used. Old fashioned garbage cans which attract rodents and breed germs are done away with; no longer is there the worry of badly fitting lids for banged-up cans — or fear of health inspections. Welded all steel SEAL-PRESS containers assure this.



BUT THIS

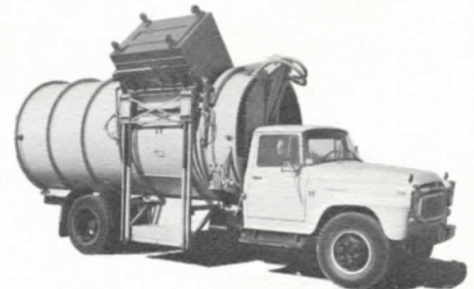
With SEAL-PRESS containers, refuse is out of sight, completely sealed in steel containers. Here is the ideal system of refuse collection for private contractors, municipalities and government agencies. Less upkeep . . . better morale . . . means greater efficiency with SEAL-PRESS container system.



Photos show the quick, efficient operation. The container has been attached to the hoisting mechanism on the side of SEAL-PRESS refuse unit.



Operation of lever begins hydraulic action and container is carried to emptying position.



Container is carried quickly to top of refuse body and emptied into it. Hydraulic packing takes place, packing any type of refuse at 85,000 lbs.*

*at 1500 p.s.i.

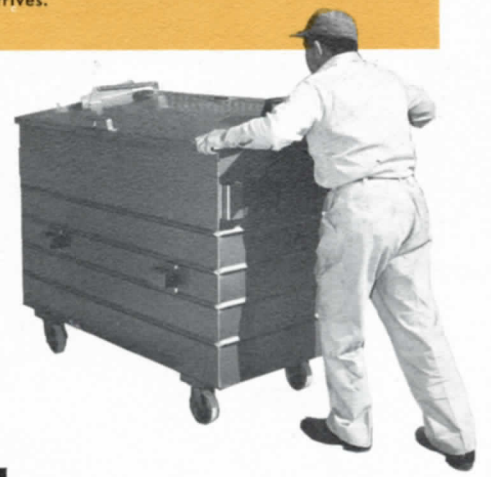
Private contractors or municipalities provide neater more efficient collections with SEAL-PRESS container system.

1



During the week, trash is emptied into SEAL-PRESS containers. One cubic yard, or two cubic yard containers, can be carefully placed in plant or on grounds to accommodate all refuse. Container is most sanitary facility for holding trash until refuse truck arrives.

2



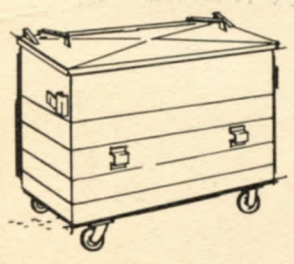
When SEAL-PRESS truck arrives, container is easily rolled to truck and loaded. Smooth acting rollers permit container to be pushed with minimum effort even when loaded.

3



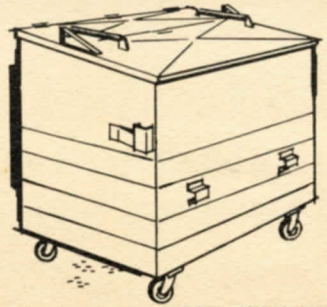
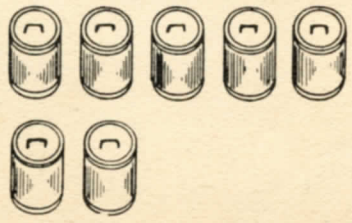
Container loads on track without lifting or straining. Outside controls permit operator to "run" container up track, unload it and return to ground in 55 seconds!

Two SEAL-PRESS container sizes are available. Specifications show capacity ... versatility ... SEAL-PRESS trademarks.



ONE CUBIC YARD
 Length 61"
 Width 30"
 Height 49"

1 cubic yard container holds the equivalent of seven 30 gallon garbage cans.



TWO CUBIC YARD
 Length 61"
 Width 42"
 Height 57"

2 cubic yard container holds the equivalent of fourteen 30 gallon garbage cans.

