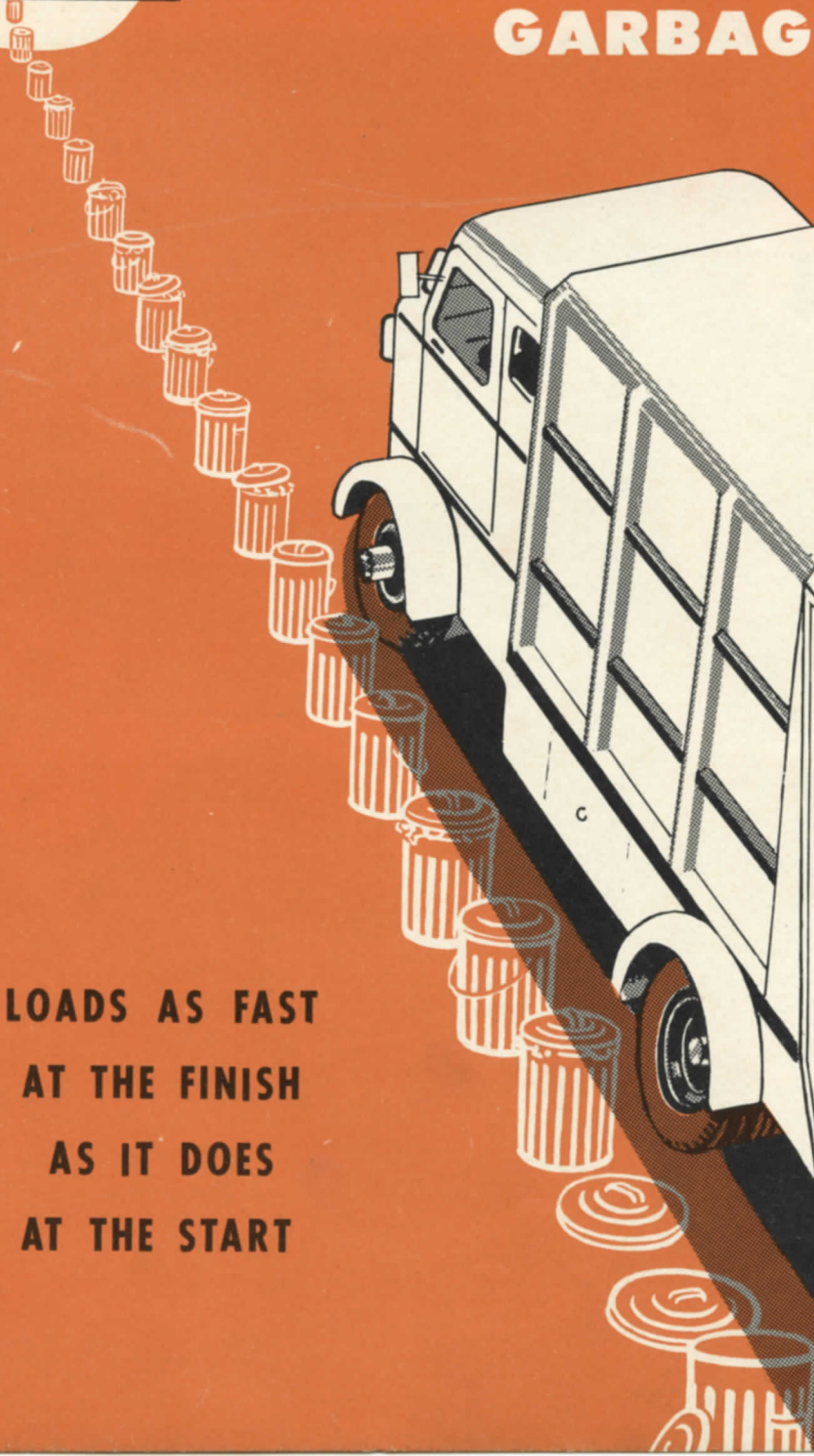


SICARD

SANIVAN

Compressed Loading

GARBAGE COLLECTOR



**LOADS AS FAST
AT THE FINISH
AS IT DOES
AT THE START**

SICARD

SANIVAN

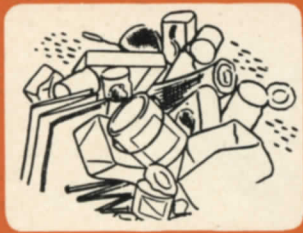
Compressed

EQUIPMENT THAT R

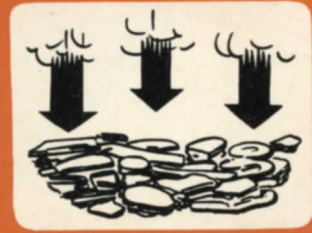
The Streamlined SANIVAN Garbage Collection unit is a credit to any community. It is visual evidence of a progressive efficient administration. It leaves streets cleaner and healthier. Each unit requires less men, less energy and less time. The SANIVAN scores on all points.



Loading a SANIVAN is MUCH FASTER, MUCH EASIER.



3 Cubic Yds. Ordinary Loose Garbage



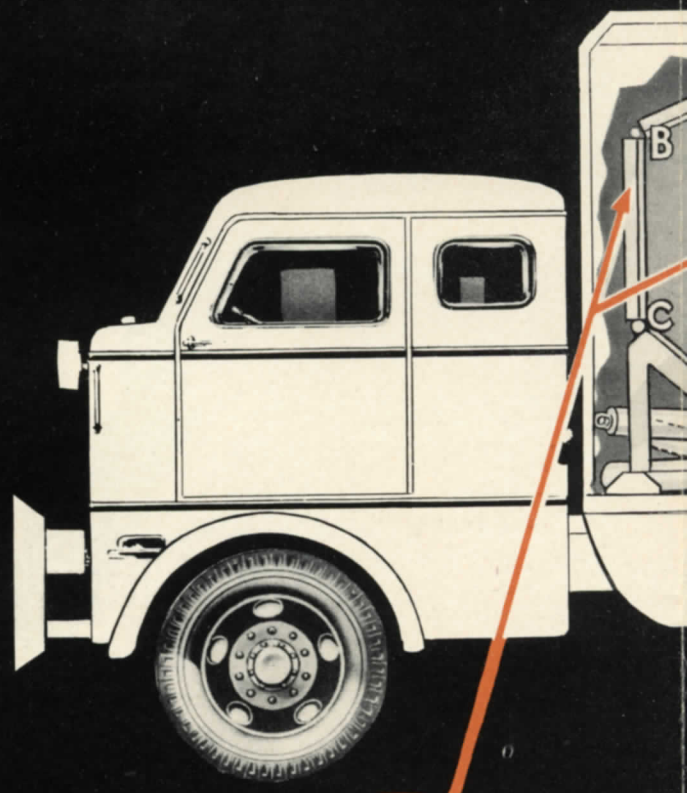
Becoming 1 Cubic Yd. Compressed Garbage.



Is accomplished by SANIVAN "yard-by-yard" Compression Chamber.



The SANIVAN is quickly, safely and completely unloaded by mechanical discharge.



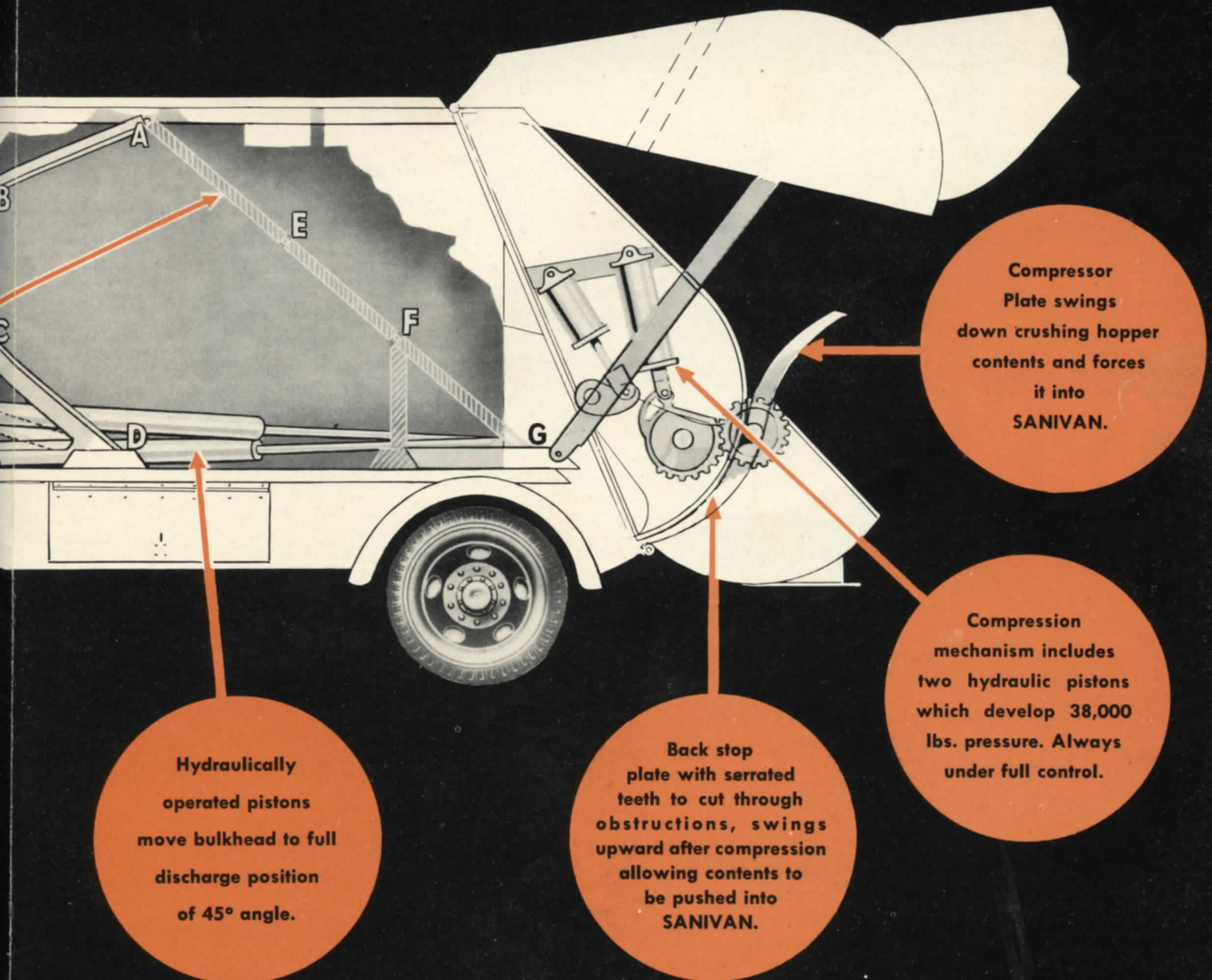
In position ABCD bulkhead is ready to receive load — A-EFG shows position after full discharge.

Loading GARBAGE COLLECTOR

REFLECTS PROGRESSIVE ADMINISTRATION

There is no energy or time lag toward the finish in loading a SANIVAN. Every garbage container, first and last, is lifted only 34 inches to the hopper. The positive compressor crushes the refuse and mechanically transfers it to the SANIVAN interior — no spilling, no exposure.

The SANIVAN loads faster and to a greater capacity because it is the only garbage collection unit that has "yard-by-yard" compression loading — plus immediate mechanical full discharge. Fewer trips and less equipment are required to do the same job.





SICARD

SANIVAN

Compressed Loading

GARBAGE COLLECTOR

for

- **EASIER LOADING**
- **FASTER LOADING**
- **FEWER TRIPS**
- **MAXIMUM SANITATION**
- **ATTRACTIVE APPEARANCE**
- **GREATER CAPACITY**
- **CLEANER STREETS**
- **LOWER COSTS**

1950

Form No. A-SV-1



SICARD

**SICARD INDUSTRIES INC.,
753 WEST MAIN ST., WATERTOWN, N.Y.**