



U.F.L. 80-40
Mobile
Packer

UNIVERSAL FRONT END LOADER

for the collection, compaction,
and transportation of
solid waste materials



specialists in waste handling systems

The Universal U.F.L. 80-40 mobile packer is the newest front end loader available, and incorporates many design features not found on similar type units.

Specifications

Overall Dimensions:

Length 34'-0"
Width 7'-11"
Height 12'-6"

Capacity:

UFL80-40 8,000 lb. arm capacity
40 cu. yds. body

CHASSIS REQUIREMENTS:

Cab to Axle Tandem Axle 155"
Front Axle 18,000# Minimum
Heavy Duty Front Springs
Rear Axle 38,000# Minimum
Power Steering Recommended
Full Air Brakes Recommended
Alliston Automatic Transmission Optional
Tilt Cab Cab over Type Chassis
10:00 x 20 Tires
West Coast Mirrors With Clearance Lamps
Total Weight including Chassis 33,000 lbs.

LOADER ASSEMBLY

Consists of a pair of lifting arms and two dumping forks which rotate, hydraulically lift and dump container.

LIFTING ARMS

Arms are contoured to provide cab door clearance at all times, each lifting arm is securely bolted to a torque tube.

MAIN LIFT CYLINDERS

Two double acting 5" diameter cylinders with 2½" rods on either side of the packer body providing maximum lifting power.

HOPPER LIFTING LINKAGE

One on each side of the body to mechanically open the hopper cover when lifting arms begin dump stage.

BODY CONSTRUCTION

Floor 7 ga. stelcoloy stl. reinforced. Walls & top 12 ga. H.T. stl. reinforced. Tailgate 12 ga. H.T. stl. reinforced. Ejection ram 10 ga. H.T. stl. reinforced.

STANDARD FEATURES ON ALL UNIVERSAL FRONT END LOADERS

Hydraulic Tailgate. Mechanical Cover. Inside/Outside Controls. Side Hopper Shields. P.T.O. and Pump. Quick Disconnect Controls. Ram Dump Safety Control.

BODY CONTOUR

The attractive body style has been design engineered to be self-cleaning and will not permit water or dirt to settle and collect.

GUIDES

The guide rails and floor are constructed of a stelcoloy abrasive resistant steel plate for maximum life and efficiency. The four replaceable dilecto wear pads are mounted on a 4 x 4 structural angle and fit snugly in the guide rail. Because of the open shape of the guide rail, any material that gets caught within the rail, will be forced out under normal working conditions.

TAILGATE

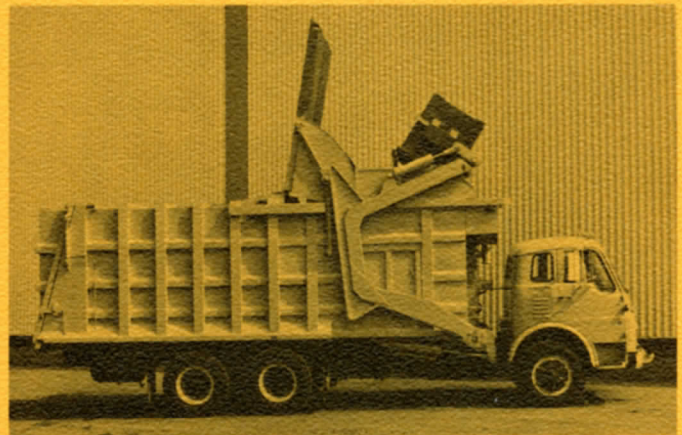
The tailgate has been designed to utilize its own weight in sealing gate to body. It is constructed of 12 ga. high tensile steel and incorporates a strongback design for maximum strength in resisting pressures acting on the tailgate.

OPTIONS

Mechanical Tailgate. Hydraulic Hopper Cover. Cab-oscope. Wash-out System. Auxiliary Gas Engine. Air-shift P.T.O.

OTHER MODELS AVAILABLE

UFL 45-25 UFL 45-30 UFL 60-30 UFL 60-40



UFL 60-30



Universal
Handling
Equipment
Company

100 Burland Crescent,
Box 3273, Station C, Hamilton 27, Ont., Canada
Tel. Hamilton 416/547-0161, Toronto 416/364-3647

Distributed by:

ClassicRefuseTrucks.com Library