

Universal Handling Equipment...producers of engineered waste handling systems.



Solid waste handling has become a very sophisticated business.

It used to be fine to just weld a few pieces of metal together and call it a garbage container . . . and it would be fine for collecting garbage . . . but not any more. Populations, industries, and costs have grown at a tremendous rate, and so have waste handling problems. The age of the garbage man is coming to

a close . . . and the age of the sanitary engineer is dawning. The people and the products in the industry are becoming very sophisticated . . . they have to be in order to keep up with the ever increasing volumes of waste, and all its inherent problems.

How Universal products benefit industry



roll-off container truck



front-end loader



roll-off container truck

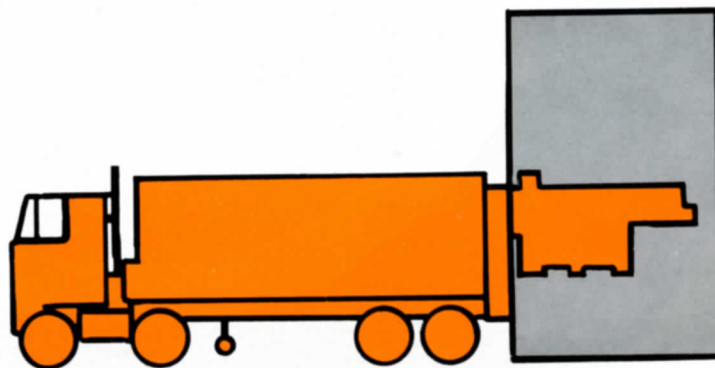
This industrial system shows how Universal products work together within a plant to collect, transfer, compact and remove waste materials.

Within a small or large plant, Universal Self-Dumping Hoppers and In-plant Containers collect waste from various departments and transfer it to either Universal Front-end Loader Containers, Open Top Roll-off Containers, or a Compactor which compacts it into a compaction container. From this point, the waste is removed by Universal Front-end Loaders or Roll-off Container vehicles to either a dumping site or transfer station, at which point the waste is re-compacted into a Transfer Trailer and hauled to a dumping site.

How Universal products benefit the consumer

This consumer system shows how Universal products work together within a community to collect and transfer waste materials.

From the home, waste is put in garbage cans where it is collected by Universal One-man Side Loaders and transferred to a dump site or transfer station. In high density population areas, waste is compacted in many high-rise apartments into Universal apartment compaction containers, which are picked up by Universal Front-end Loaders and hauled to dumping sites or transfer stations, where again they are re-compacted into Universal Transfer Trailers and hauled to dump or sanitary land fill sites.



transfer trailer

transfer station

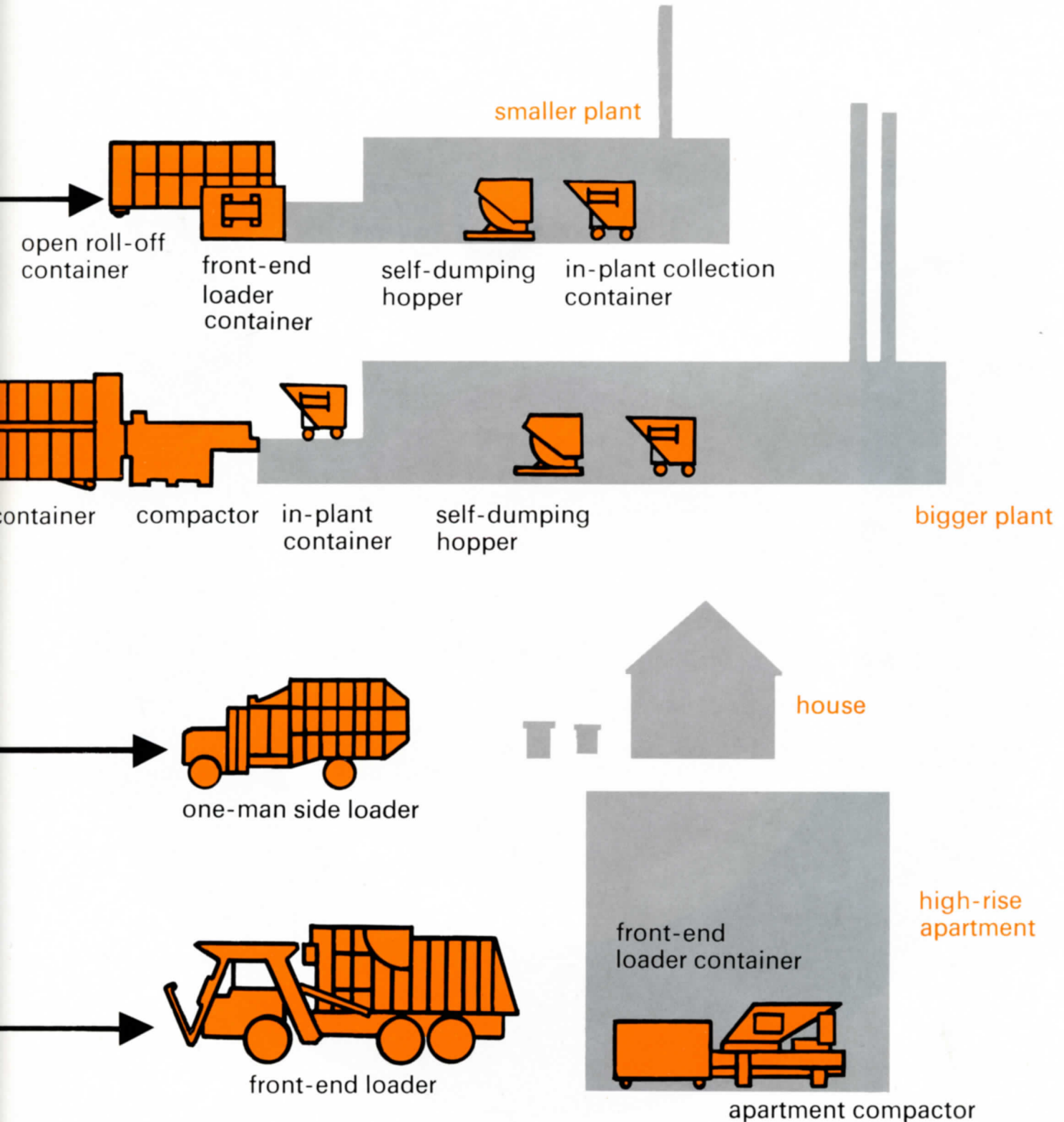


roll-off

We think engineered systems

Universal has for some time recognized that the industry must change. We realized that industry was not going to settle for inferior, old-fashioned and poorly engineered products; just because they were cheaper. So we organized and staffed an engineering department

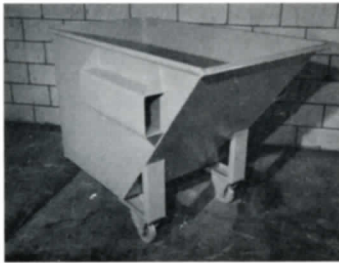
that could review all our products, redesign and re-engineer them into logical systems. These systems are now integral parts of many of the nation's well known industries (at your request, we will gladly supply a list of the industries which have purchased our equipment).



Take your choice of quality products that will benefit your company.



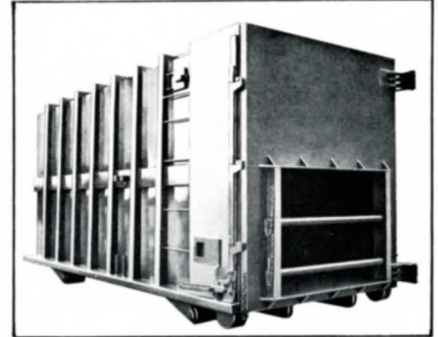
Self-dumping hoppers—
sizes ½ cu. yd. to 2 cu. yds.



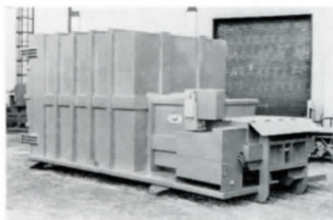
In-plant collection containers—
sizes 1 cu. yd. to 3 cu. yds.



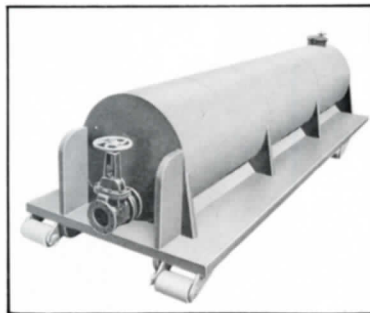
Front-end loader containers—
sizes 1 cu. yd. to 10 cu. yds.



Roll-off containers (compaction)—
sizes 30 cu. yds. to 40 cu. yds.



Compactor roll-off combination
model #214—
2 yds. compactor with 20 to 30
cu. yds. container capacity.



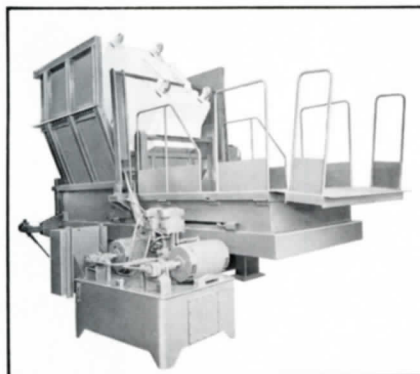
Roll-off containers (tank)—
capacities 1000 gallons to 3000 gallons



Open roll-off containers—
capacities 15 cu. yds
to 40 cu. yds



Apartment compactor— Super 1830



Industrial compactors—
sizes 1.5 cu. yds. to 11 cu. yds.

Scrap lugger containers—
capacities 6 cu. yds.
to 22 cu. yds.



Side loader—capacity 22 cu. yds.

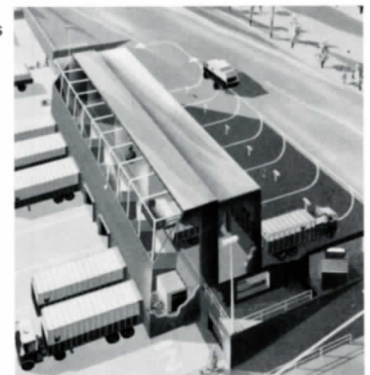


Front-end loaders—
capacities 25 cu. yds. to 40 cu. yds.

Transfer stations



Transfer trailers—capacities 65 and 75 cu. yds.

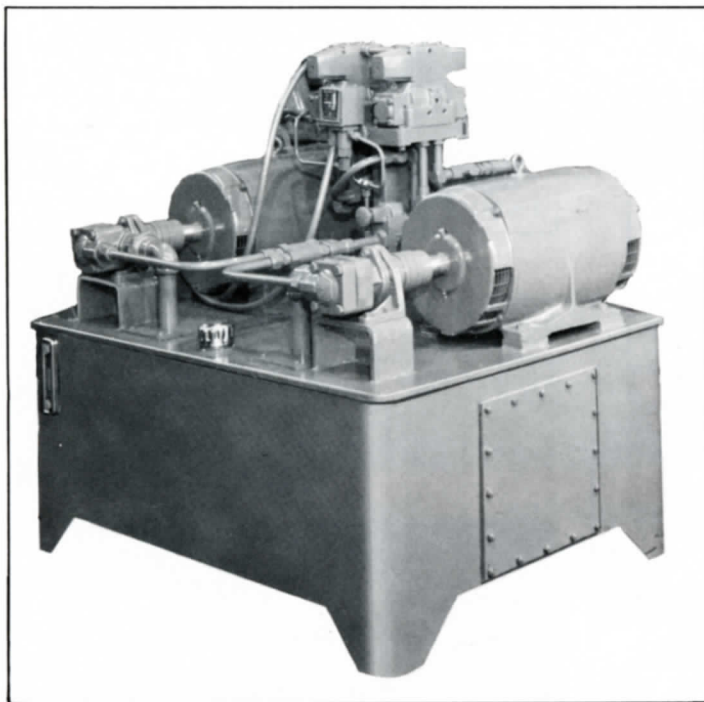


Special service is routine with us

Universal prides itself in its ability to engineer special systems and/or components. Our standard equipment can be adapted to serve other purposes or solve special handling problems, in such instances we offer a complete service, from blueprint to final product.

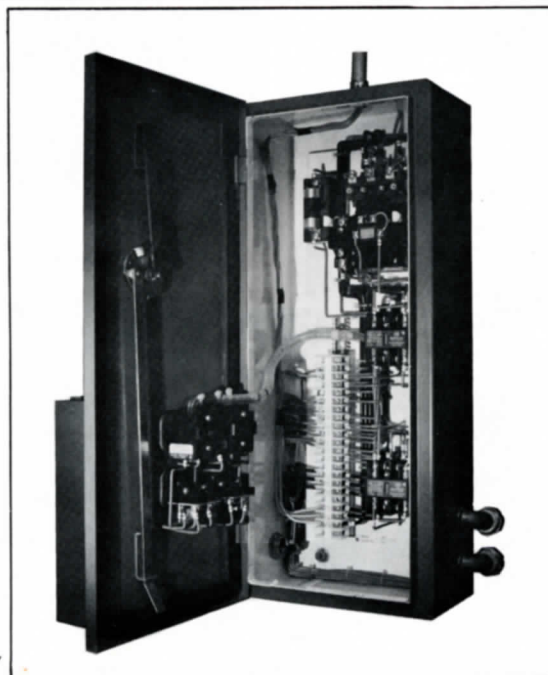
It's attention to detail that counts

Every weld, nut, bolt, screw . . . every wire and component is checked and double checked and Universal uses all the finest components . . . steel, hydraulic systems, electronic systems . . . and we engineer and assemble them with care.



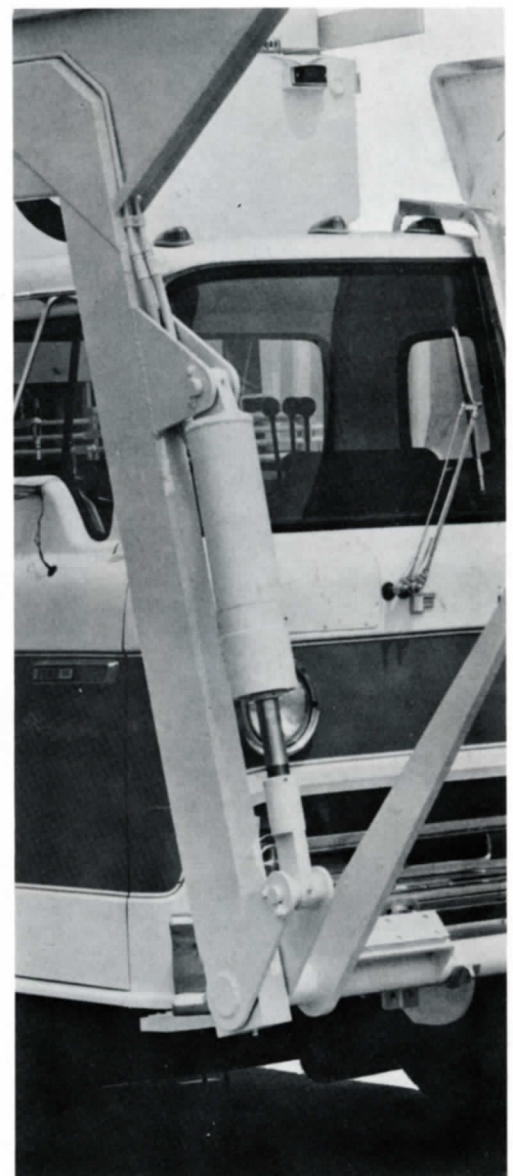
Dual power unit

Dual power units are standard equipment on all compactors from 2 to 11 cu. yd. capacities.



Super 1830 electrical panel

The wiring in this panel is typical of the quality that is in all Universal electrical components. Hand wired, hand assembled, easy to work with.



Lift arm cylinder mount

The engineering and workmanship is typical of that found in all Universal products.

We'd like to help

For complete detailed information, call or write to:
Universal Handling Equipment Company, 100 Bur-
land Crescent, Box 3273, Station C, Hamilton 27,
Ontario. Tel. (416) 547-0161.



"specialists in waste handling systems"

