

# NOW

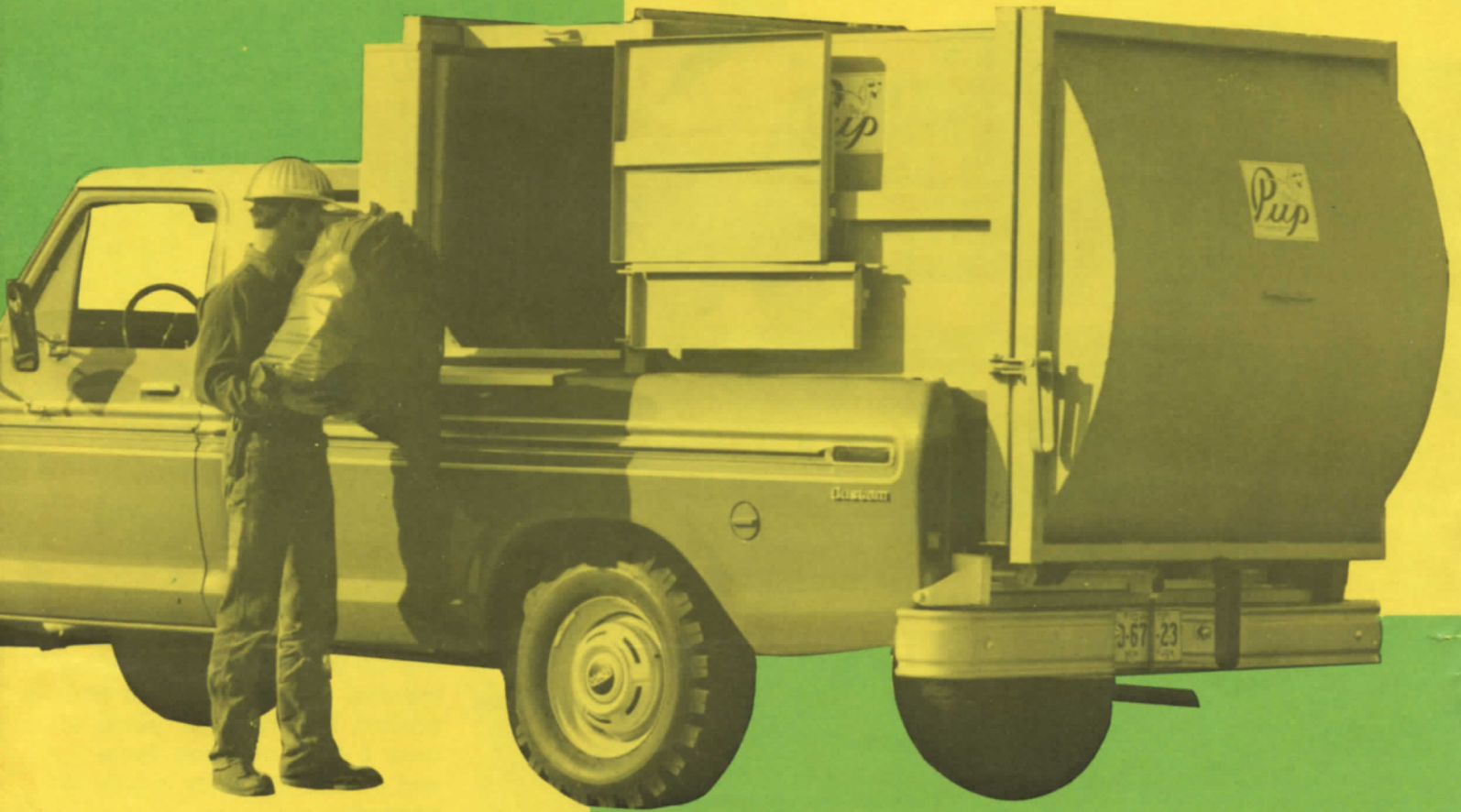
The

# Pup<sup>®</sup> II

## PICKUP PACKER

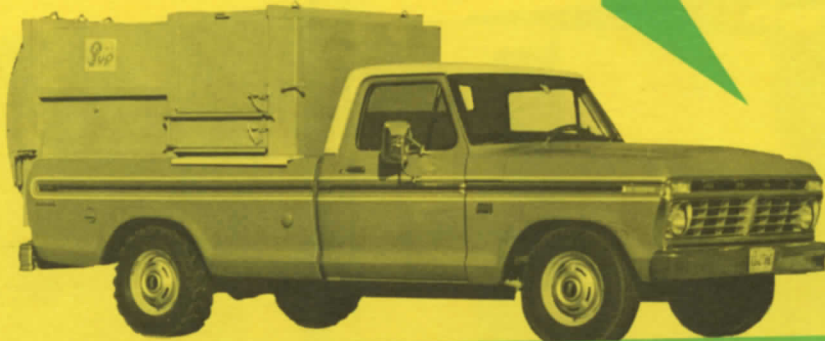
BUILT ON EXPERIENCE

Newer than tomorrow —  
the PUP's your answer today  
for a packer body that's both  
mobile and stationary — and  
costs less to own and operate.



From

**WAYNE** engineering  
corp.



1 standard 3/4 Ton Pickup  
PLUS  
1 PUP packing body  
EQUALS  
1 roll-on roll-off Pickup Packer

A great combination to slash refuse collection costs!

Simply open either side door, throw in the refuse and watch the full traveling blade pack the material. An engine drive PTO powers the hydraulic pump to give 5 tons of blade force — and a complete cycle is only 15 seconds.



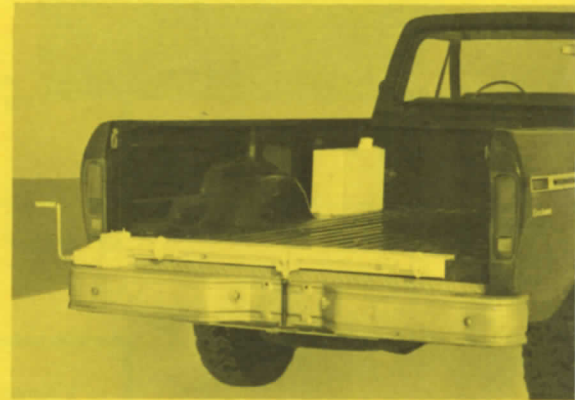
**WAYNE'S**



At the land fill, the Pup's tail-gate is quickly unlatched and swings to the side. The material is smoothly ejected by the packing blade. Lock it up again and you're off for another load.



Need to use the pickup without the PUP? Just disconnect the hydraulic quick couplings, winch the PUP off on its legs and the truck is free for any purpose. Takes less than five minutes. Hoses automatically disconnect from PUP should your operator forget to uncouple them.



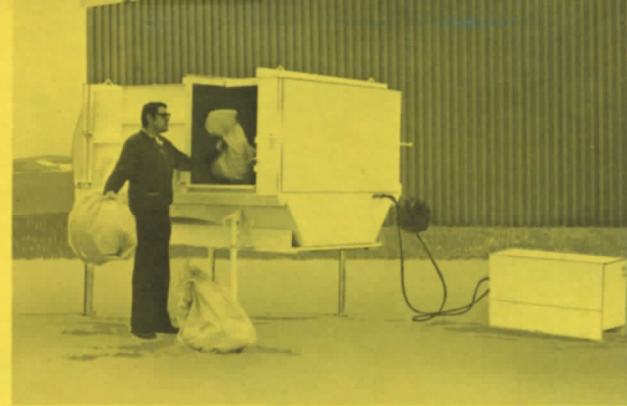
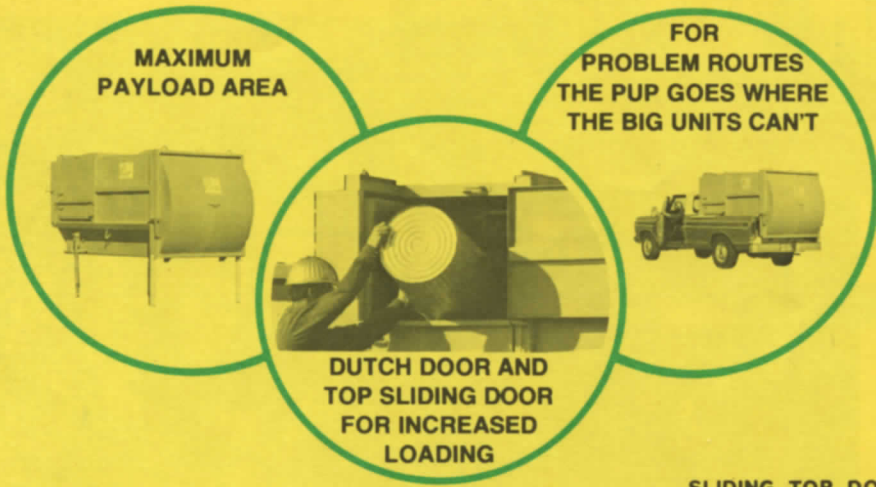
The pickup truck mounting kit consists of:

- Roller winch assembly that bolts to rear of truck bed.
- PTO-pump and hydraulic lines.
- Electric accelerator to rev up engine.
- Reservoir tank and filter.

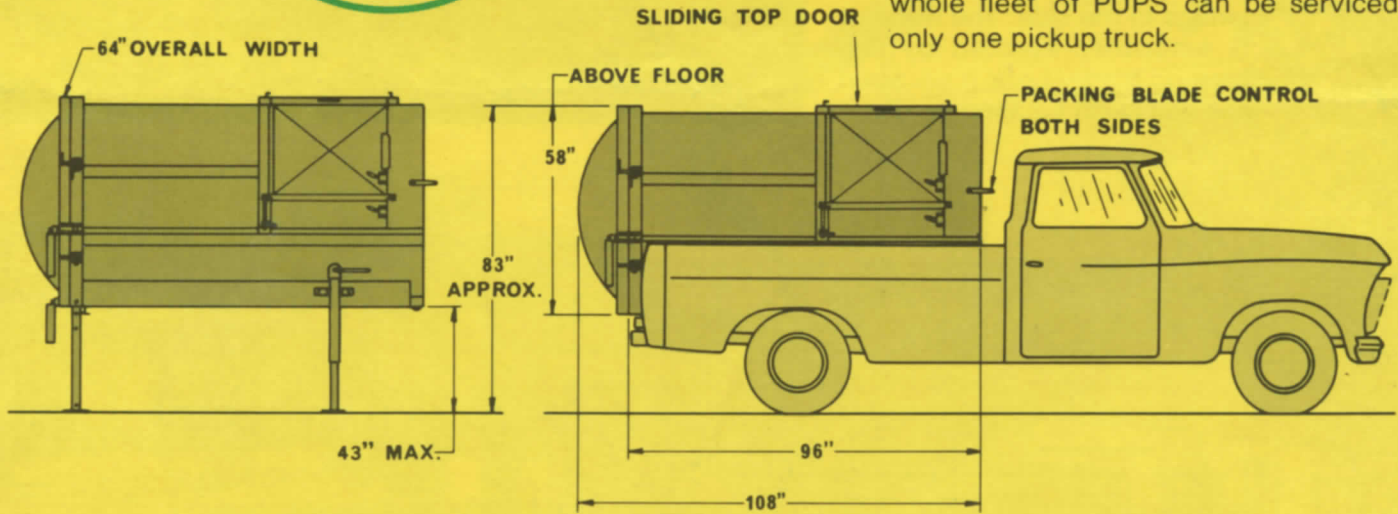
The utility of the pickup bed is never lost.

The PUP, when off-loaded, becomes Free standing. The same crank handle used to unload the PUP, quickly adjusts the jack legs to variations in the surface of the storage site.





As a stationary packer, the PUP is placed at a restaurant, super market, mobile home village or any refuse generation site and operated with an electrical power unit. A whole fleet of PUPS can be serviced with only one pickup truck.



The PUP is available in two trailer versions for indoor use in factories, convention centers, etc. and as a trailer unit for road use.



**SPECIFICATIONS**

<b>PUP</b>	
Length .....	108"
Overall Width .....	64"
Height .....	83"
Capacity .....	5 cu. yds.
Blade Force .....	5 tons
Packing Cycle .....	15 seconds when powered by truck 18 seconds when powered by 3 H.P. 220 V, 3 $\phi$ auxiliary power unit.
Empty Weight .....	1800 lbs.

**PICKUP TRUCK REQUIREMENTS**

GVWR .....	8,000 lbs. minimum
Body Length .....	8 ft.
Body Type .....	Straight side with inside wheel wells
Transmission .....	4-speed manual or automatic

NOTE: The PUP will often pack over 2,000 lbs. of material. We recommend 8,000# GVWR minimum in the following model pickup trucks:

Chevrolet C20 or C30 Fleetside, Dodge D200 Sweptline, Ford D250 Stylside, GMC C2500 Wide-side, and I.H.C. 200 Bonus Load (with wheel well modification).

For heavy duty, off road or rough terrain use, we recommend a 1-ton pickup truck of appropriate GVWR.

**WAYNE** engineering corp.

P. O. BOX 648  
CEDAR FALLS, IOWA 50613  
PHONE A/C 319 266-1721