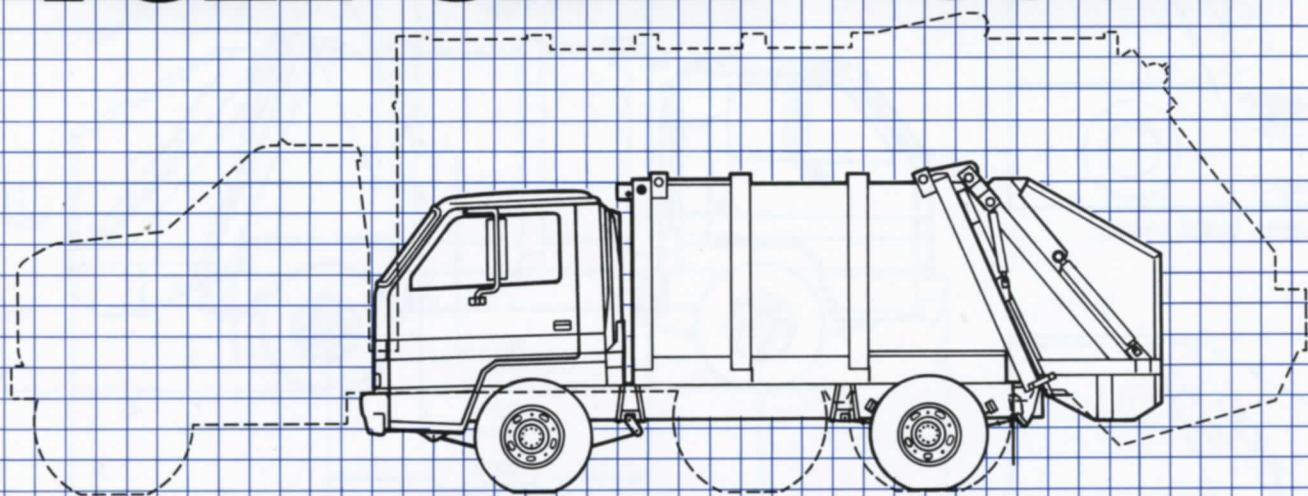


The Royal GT-6

Small-Sized Body. **FULL-SIZED TOUGH!**



ANNOUNCING THE ROYAL GT-6!! Our 6-yard little brother to the World Famous ROYAL GT family of robust rear loaders. What better design could be used to create this mighty little compactor than the tough, tested and timeless Royal GT?



Fast and Friendly

Full packing cycle takes just 10 seconds. Reload in 4 seconds. NO WAITING!! Operators love the quick blade action. The extra low loading height makes the GT-6 the most user friendly compactor body ever designed.

Tiny and Tough

The smallest, the lightest and toughest American-built rear-loading compactor!! Only 3985 lbs. when empty, the ROYAL GT-6 fits neatly on any economical 14,000 lb. GVW chassis with 84" cab-to-axle dimension. Yet you can pack 6 yards of refuse quickly and tightly into the GT-6... loads of 5,000 lbs. are not uncommon... making this mighty little GT-6 a true high-density compactor.

Nimble and No-Nonsense

The 77-inch body width and 91-inch mounted height allow the GT-6 to slip under low doorways... spin through your parks... duck into narrow alleys... run down rural routes... and dash around cul-de-sacs.

The Finest Breeding!

Sired from the greatest of them all, the ROYAL GT family, the GT-6 features:

- Full seam welding
- PTO pump or engine belt-driven clutch pump powered
- All manual or auto-cycle packing valves
- Efficient and time-tested back hoe packing blade action
- High-density compaction — 800-plus lbs./yd.³
- Fastest compaction cycle — 10 seconds
- Lowest loading height
- Simple, straight-forward design for ease of maintenance

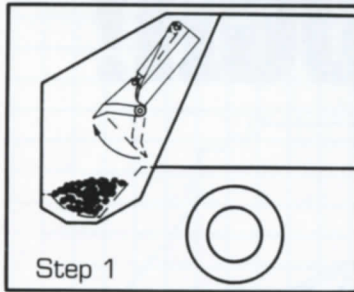
P.O. Box 648 ■ Cedar Falls, Iowa 50613 ■ United States of America

Phone: 319-266-1721 ■ Telex: 46541 ■ Fax: 319-266-8207

WAYNE
ENGINEERING CORPORATION

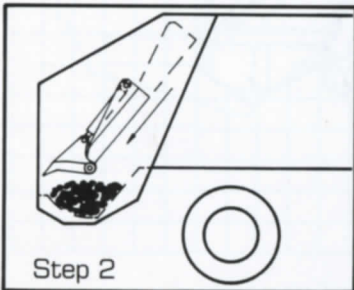
The Royal GT-6

Designed to Fit Your Needs.



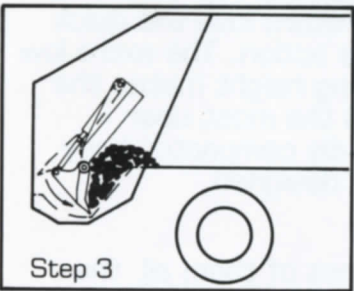
Step 1

Sweep blade raises.



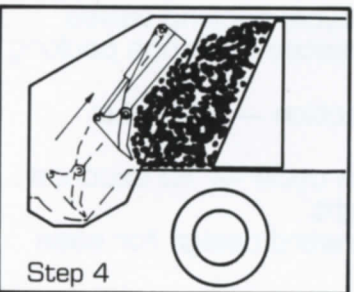
Step 2

Sweep and carriage blades slide down over the loaded hopper.



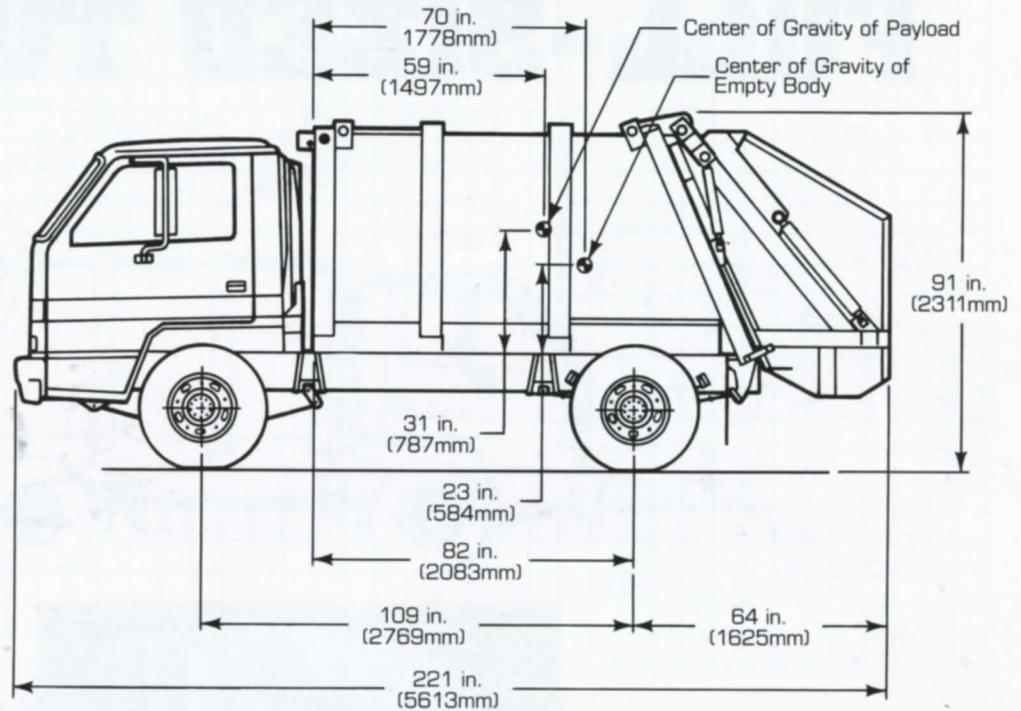
Step 3

Sweep blade pivots down to sweep the hopper clean.



Step 4

Sweep and carriage blades slide up to pack the refuse tightly into the body.



SPECIFICATIONS

Body Specifications

Fillable body capacity (not including hopper)	5.8 cu. yd.
Practical fillable hopper capacity6 cu. yd.
Estimated average compaction ratio	800 lbs./cu. yd.
Estimated average payload	4,640 lbs.
Empty body weight	3,985 lbs.
Total weight of body and estimated average payload without truck chassis	8,625 lbs.
Body length to rear-most extremity of hopper	146 in.
Body height above truck frame	61 in.
Overall body height (including truck chassis), tailgate closed	91 in.
Overall body height (including truck chassis), tailgate open	138 in.
Overall body width	77 in.
Hopper opening width	56 in.

Hydraulic Specifications

Normal maximum operating system pressure	2,500 PSI
Oil flow with pump furnished as standard	15 GPM
	@1,500 RPM

Recommended Chassis Specifications

Cab-to-axle	84 in.
Minimum chassis GVWR for avg. est. payload	14,000 lbs.

P.O. Box 648 ■ Cedar Falls, Iowa 50613 ■ United States of America

Phone: 319-266-1721 ■ Telex: 46541 ■ Fax: 319-266-8207

WAYNE
ENGINEERING CORPORATION

970-010-000